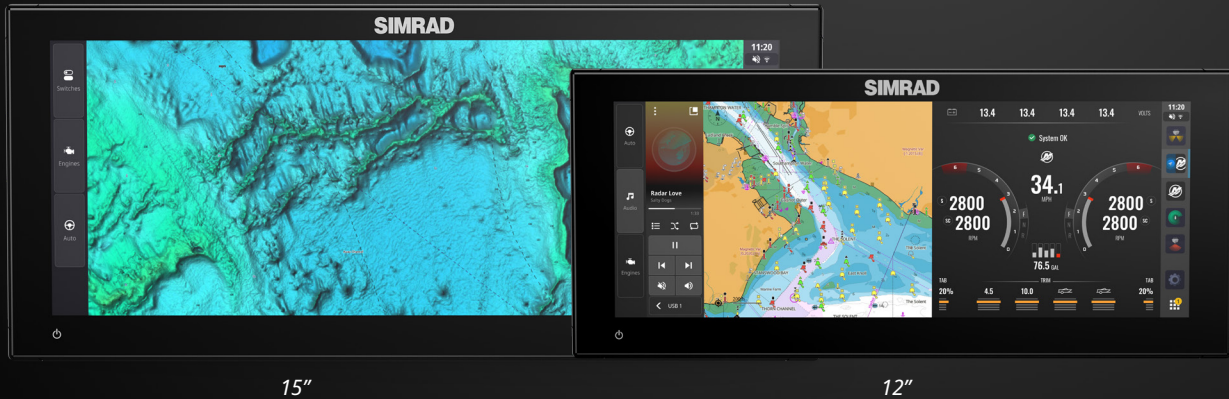


NSX[®] ULTRAWIDE

EXPAND YOUR HORIZONS



NSX ULTRAWIDE offers a new perspective on boating.
Discover an all-new aspect ratio for our most immersive experience yet.
Why settle for anything less?



Immerse Yourself

NSX ULTRAWIDE delivers all the benefits of dual screens in one place, for a more streamlined, more immersive experience. Experience perfectly-optimized splits and uninterrupted data flows that are easier to digest – unlocking more data, more controls, more possibilities.



Show-stopping Dashboards

There's nothing else like NSX ULTRAWIDE - creating eye-catching, low-profile dashboards that stand out instantly. The unique ultrawide display is built to be simpler, cleaner, and more elegant than anything else in the marina.

The cutting-edge aspect ratio is also the perfect place to explore our latest operating system. A simplified presentation delivers game-changing ease of use, with streamlined menus and fully customizable panels.



The Ultimate Charting Experience

Charts never looked as good as they do on NSX ULTRAWIDE. The ultrawide display's high pixel density shows super-sharp resolution on C-MAP[®] DISCOVER[™] X. And an upgrade to REVEAL[™] X adds incredible shaded relief and satellite imagery.

The revolutionary C-MAP Safety Alerts automatically alert you to hazards up ahead, from shallow waters to buoys. And – in an industry first – the X-Chart Manager lets you manage C-MAP chart updates and upgrades directly from your device, with the ability to choose custom areas for a near-instant download.

Key Features

Simrad® Suite Integration

See near and far with full support for 3G, 4G and HALO® radars.

Easy autopilot integration with NAC-1, NAC-2, NAC-3 and NAC-D pilots.

Simrad® App integration for Waypoint management and offline trip planning.

Third Party Integration

Best-in-class Mercury® Integration, inc. SmartCraft® Connect.

Integration with leading propulsion brands such as Honda and Suzuki.

CZone® digital switching.

OmniSense.

Dometic.

Lumishore lighting.

Multiple audio partners.

IP cameras.

HTML5 app compatible and much, much more...

Charts and Navigation

Bundled with C-MAP® DISCOVER™ X charts for North America and Canada.

Optional upgrade to C-MAP REVEAL™.

X-Chart Manager.

Support for additional charting, such as CMOR Mapping, Florida Marine Tracks, StrikeLines and Standard Mapping.

3x faster autorouting* .

**vs Simrad® GO*

Sonar sharing between NSX® devices.

Compatible with Active Imaging™, featuring CHIRP, SideScan, and DownScan Imagining™, as well as the S5100 sonar module.

Compatible with a wide range of 1kW transducers.

Network Connectivity

Wireless, Ethernet, USB and NMEA 2000®.

Additional Features

The latest Simrad® operating system, for game-changing ease of use.

Ultrawide SolarMAX™ IPS HD touchscreen with extreme viewing angles.

Intuitive setup wizard.

Bracket mount sold separately.

Retail Sku - What's in the box

Simrad® NSX ULTRAWIDE device

Active Imagining™ 3-in-1 Transducer

C-MAP® DISCOVER X™ chart card* (**AMER region specific*)

Sun Cover for device

4-pin power cable and fuse box

Rear mount kit and dash gasket

Documentation pack

Boat Builder sku pack-ins differ from retail sku



Support

Navico Americas	+1 918 438 8669 / 855-241-3598 (Toll free)
Navico Asia Pacific	+64 9 925 4595
Navico EMEA	+31 786 530 004

Sales

Navico Americas	+1 800 628 4487	sales.americas@navico.com
Navico Asia Pacific	+64 9 925 4500	sales.apacnz@navico.com
Navico EMEA	+44 1794 510 010	sales.emea@navico.com