

FAMILY-X

THE NEW FAMILY FOR FARMERS
Greenhouse Automation Robot



 **FAMILY**

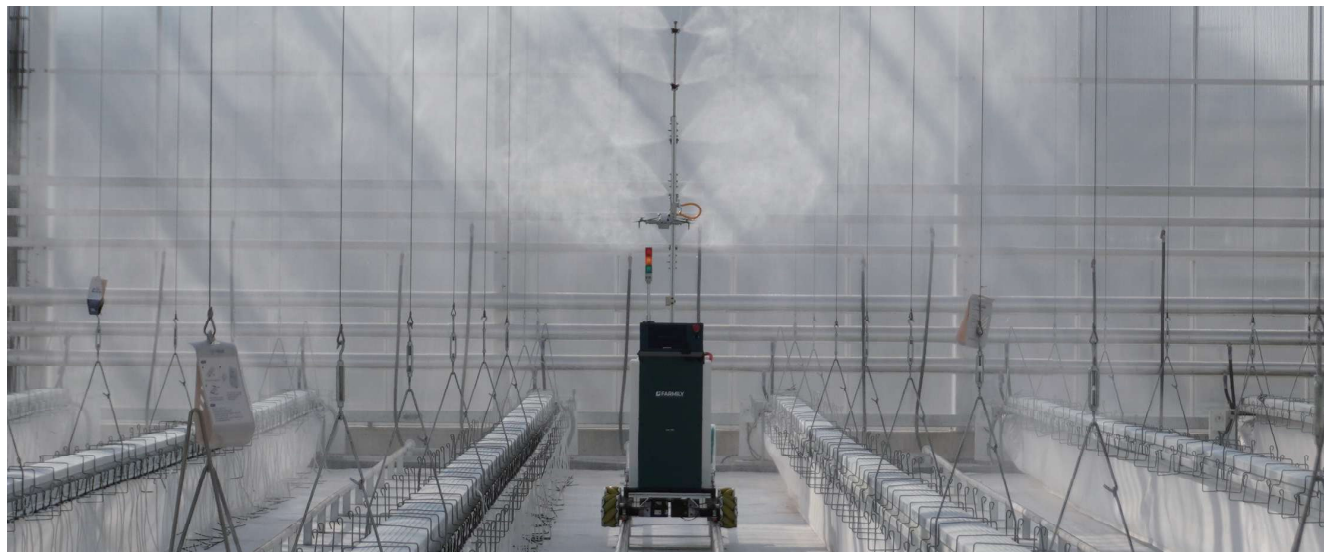


family.ai

FARMILY-X S300



Smart Spraying Robot for Greenhouse Automation



Revolutionizing Greenhouse Farming

FARMILY-X S300 is an advanced semi-autonomous spraying robot designed to enhance productivity and safety in greenhouses. Powered by state-of-the-art autonomous driving technology, it enables precise pesticide application while reducing labor intensity and preventing excessive chemical use.

Specifications

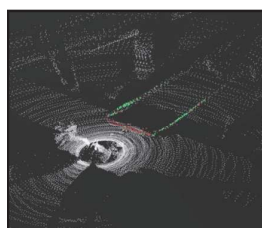
Dimensions	1,716 × 826 × 1,253
Weight	130Kg
Operating Time	More than 8 hours
Speed	1 m/s
Tank	300 L
Nozzle Height	Customizable on request

Key Features



EASY TO USE

Simple and efficient operation



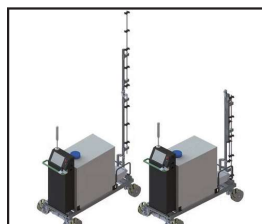
SELF-DRIVING

Supports unmanned operation



TANK: 300 L

High-capacity tank



FOLDABLE NOZZLE

Provides a customizable foldable nozzle boom