



| Model B620



| Model B620S



| Model B620W



| Model B620WS



»» Specification P34

The AMEC B620 series represents a range of 2W AIS Class B transponders, a marvel of software defined radio technology designed for exceptional performance and durability. The B620 series provides 4 different variants to meet various application requirements with main features detailed below:

Features\Models	B620	B620S	B620W	B620WS
2W-CSTDMA	✓	✓	✓	✓
NMEA-2000 ; NMEA-0183 & USB	✓	✓	✓	✓
IP68	✓	✓	✓	✓
Wi-Fi			✓	✓
Antenna Splitter		✓		✓

## Features

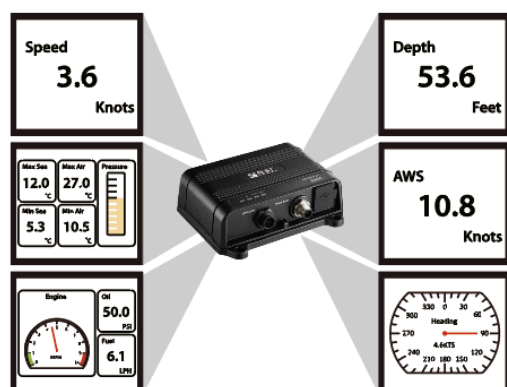
- 2W AIS class B with global certification (CE, FCC, ISCED)
- AMEC's 3rd-gen AIS engine delivers unparalleled transmission performance and reliability
- Best-in-class receiving sensitivity of -111dBm
- World's lowest power consumption
- Powerful 72-channel high speed GNSS receiver supporting GPS, Galileo, Beidou or GLONASS
- Versatile connection interfaces including NMEA 2000, NMEA 0183 and USB
- IP68 waterproof for harsh marine environment
- Designed and tested for shock, vibration, extreme temperature and salt-mist robustness
- Constant self health test with intuitive LED indicators
- Compact and lightweight for easy installation



Powered by AMEC's 3rd-gen AIS engine, the B620 series ensures superlative performance in both transmission and reception.



Advanced 72-channel high speed GNSS receiver supporting GPS, Galileo, Beidou or GLONASS



Advanced NMEA translation function to multiplex NMEA 0183 inputs to both NMEA 0183 output ports, USB and Wi-Fi (B620W/ B620WS).



IP68 waterproof rating guarantees robust protection against water and dust, ensuring it can withstand the harshest marine conditions.

## High Performance Wi-Fi (B620W and B620WS)

Reliable and powerful Wi-Fi for your smartphone, tablet or laptop:

- Support Client Mode to join an existing network
- Support Access Point Mode to connect directly between AIS and mobile devices



## Advanced Splitter Built-In (B620S and B620WS)

Enable easy installation by sharing a single VHF antenna for both AIS and VHF:

- Very low loss on transmission path
- Zero insertion loss on reception path (DSC Path)
- Transparent mode guarantees priority to VHF radio operation even if the splitter is turned off



## Optional Accessories



GPS Antenna Unit  
Model GA-22



GPS Antenna Unit  
Model PA-02



Tx Switch Box  
Model SB-181