

ECHOMAX

A significant advance in marine safety

EM230 COMPACT RADAR REFLECTOR

We hereby certify that the Linear diagram shown here was issued by QinetiQ radar testing laboratory in Jan 2021 and that the EM230 Compact accompanying this certification is identical in all respects to that tested. The RORC recommend a mounting height is 4m above sea level if possible. Echomax Reflectors must not be mounted horizontally.

Signed



Managing Director Date 04/02/2021

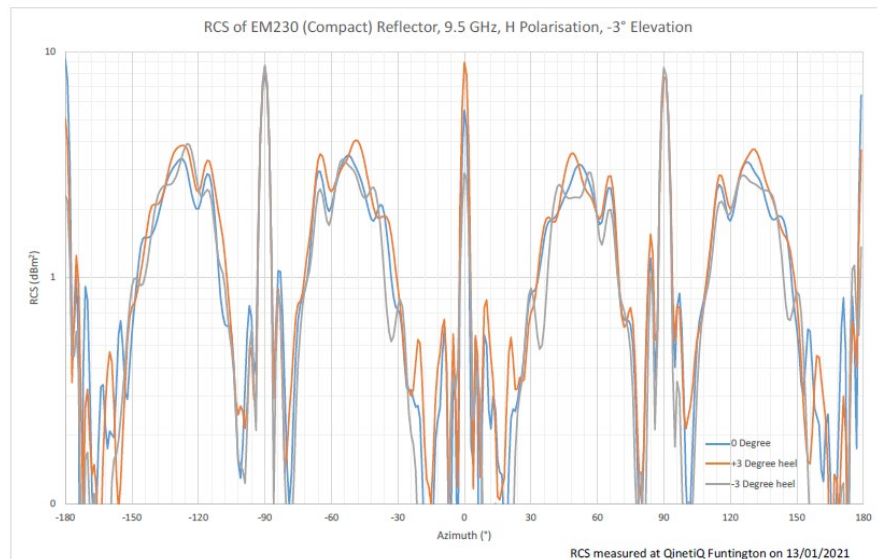
EM230 Compact—Test results from QinetiQ Funtington.



With optional
Lalizas (shown)
Orionis or Hella lights



QD base fitting available
as an optional extra.



The +/-3 degree assessment band. Average RCS = 1.5Sqm Max RCS = 9.3Sqm

Item	Description	Quantity
6	M6—Nyloc-nut	4
5	30mm dia stainless steel washer	4
4	Nylon insert	4
3	30mm dia neoprene rubber washer	8
2	50mm M6 stainless steel bolt	4
1	A frame mounting	

