

AI | SWISSLIDAR AI

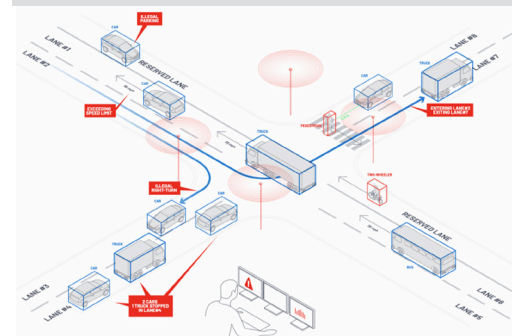


3D Spatial Intelligence - swissLIDAR AI is the perfect combination of a Lidar sensor and advanced software for the precise capture of the environment and advanced real-time processing of 3D data.

Multimodal real-time monitoring of an entire intersection with the highest precision (cm-accurate) and in compliance with data protection regulations.

VEHICLE MONITORING AND ITS APPLICATIONS

- Multimodal traffic counting and precise identification of near-misses.
- Observation of vehicles and pedestrians to improve the safety of vulnerable road users.
- Monitoring of parking space occupancy for improved operational efficiency.
- Ready-to-use solutions for users (dashboard, KPIs, alerts) and an API.
- Intelligent software built with key building blocks to deliver value in a variety of applications.



Accurate vehicle sizes, distances and speeds. Pedestrians and cyclists are detected up to 90 meters away.



DATA PRIVACY
COMPLIANT



WORKS IN ANY
LIGHTING CONDITIONS



CM-LEVEL
ACCURACY



SCALABLE IN
MANY APPLICATIONS



LARGE AREAS
COVERAGE



3D NATIVE
SPATIAL INSIGHT



The dashboard displays real-time KPIs, such as the service level for various conditions.



IDEAL APPLICATION AREAS

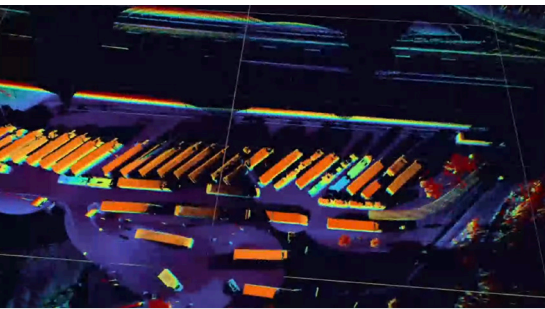
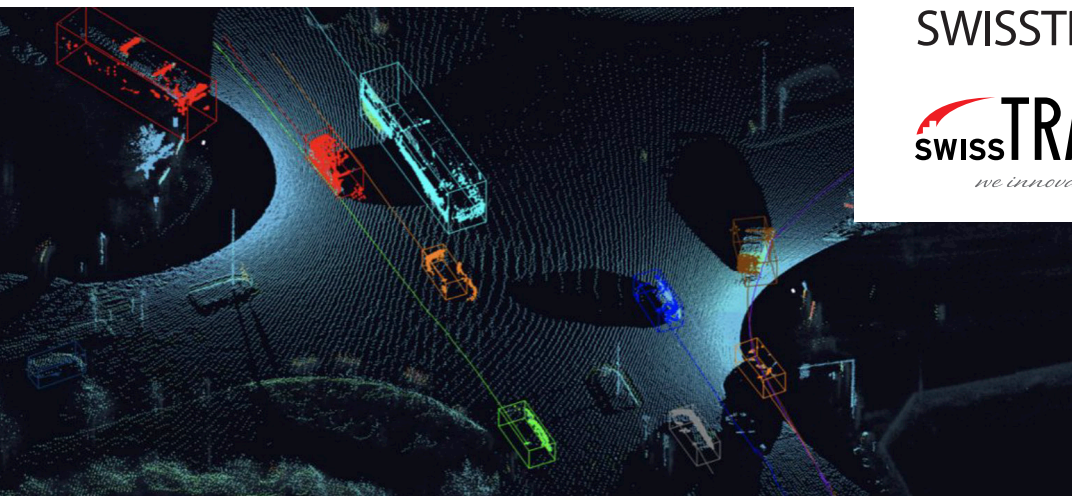
- Traffic flow optimization
- Near misses
- Multimodal counting
- Parking management
- Wrong-way drivers
- Vehicle height
- Object on the road
- Onset/end of traffic jam

TECHNICAL FEATURES

- Standard: 6 object classes
- Mobile or fixed installation
- Optional: SWISS10
- Highest precision (cm)
- Extensive coverage
- Data protection compliant
- All lighting conditions
- Real-time data
- Personal dashboard

COMBINABLE PRODUCTS

swissDASHBOARD



MOBILE OR FIXED INSTALLATION
MOBILE UP TO 72H AUTONOMY

LASER CLASS
CLASS 1 (EYE-SAFE)

LASER WAVELENGTH
865 NM

POWER CONSUMPTION
14 - 20 W (22 W PEAK AT STARTUP)

OPERATING VOLTAGE
9V - 34 V, 12 V OR 24 V NOMINAL

WEIGHT
400 G

OPERATING TEMPERATURE
-40 °C BIS +60 °C

INGRESS PROTECTION
IP68

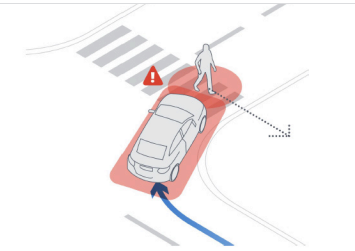
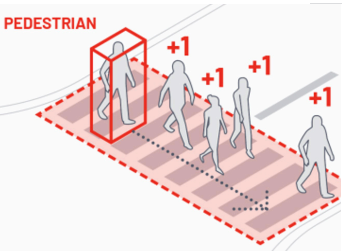
MOBILE SOLUTION

Mobile box with pneumatic telescopic antenna 4.8m, 260 kg empty weight, IP67, 1105 x 696mm, 1200W battery 230V with electronic air pump, mounting kit for 2 Lidar, 4x batteries 800Ah/12V for autonomy up to 72h.

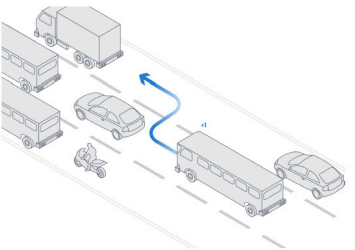
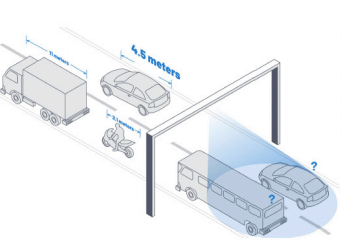


Real-time detection of truck parking at motorway service areas.

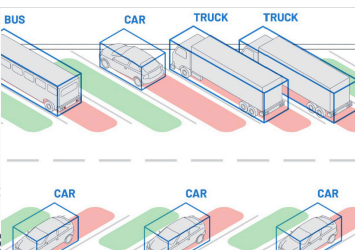
Highest detection accuracy in all light and weather conditions.



Pedestrian crossing
Counting, safe crossing, wrong crossing, pedestrian flow, near accident, alerting....



Street
Counting, vehicle classes, speeds, beginning and end of congestion, lane changes, wrong turns, vehicle height, wrong-way drivers, objects on the road...



Stopping zones
Parking management, unauthorised parking, stop bar, stop bar violation...

SMART MOBILITY SOLUTIONS
PRODUCT CATALOGUE

