

**THE GAME CHANGER  
FOR INTELLIGENT  
BOAT MONITORING**



**YACHT**  **SENTINEL**

# ***NEXT-GEN SMART BOAT SOLUTION***

*Our mission is to make boating as easy  
and relaxing as possible to boat owners,  
while creating outstanding value to  
shipyards, fleet managers and dealers*



Visit our website  
[www.yacht-sentinel.com](http://www.yacht-sentinel.com)





## **YS PRO OVERVIEW**

---



Scan QR CODE  
to find out more

# YS PRO OVERVIEW

*Protected by a premium waterproof rugged casing,  
YS Pro is an “all in one” product combining:*



## A LOW POWER CONSUMPTION SECURITY SYSTEM

- Super low power consumption (<0.3 W)
- Large selection of wireless premium sensors with extended battery life using ZigBee 3.0 protocol
- Internal alarms include geofencing, battery, tilt, temperature and G-shock alarms



## A REVOLUTIONARY SAILING ANALYTICS SOLUTION

- Data collected from NMEA2000, CAN Open, J1939, Ethernet and Modbus
- Smart filtering functions (averages, min/max, etc.)
- Coverage in more than 100 countries



## SMART CONNECTION

- Fit-for-all digital switching solution, using either Wi-Fi, BLE 5.0, Zigbee 3.0, NMEA 2000 PGNs or Modbus.
- 12v 24v smart relay available



## HIGH-SPEED WI-FI HOTSPOT

- Users can insert a sim card for YS Pro to act as a high-speed Wi-Fi hotspot
- Multiple Sentinel Cam 2 can be paired





**YS Pro is part of a breakthrough ecosystem including an user-friendly app and a CRM product line for businesses called Partner Platform. The Partner Platform allows businesses to create value out of the data we collect.**

Shipyards and fleet managers have access to their entire fleet whilst dealers only have access to boats they are responsible for. A wide range of data collected from various CAN buses

can be accessed remotely from any boat at anytime to improve customer support, run reports, increase efficiency and take better care of a fleet. YS PRO collects thousands of data

points every day. The Partner Platform is the ideal CRM system to assist shipyards and fleet managers in improving their products and services.

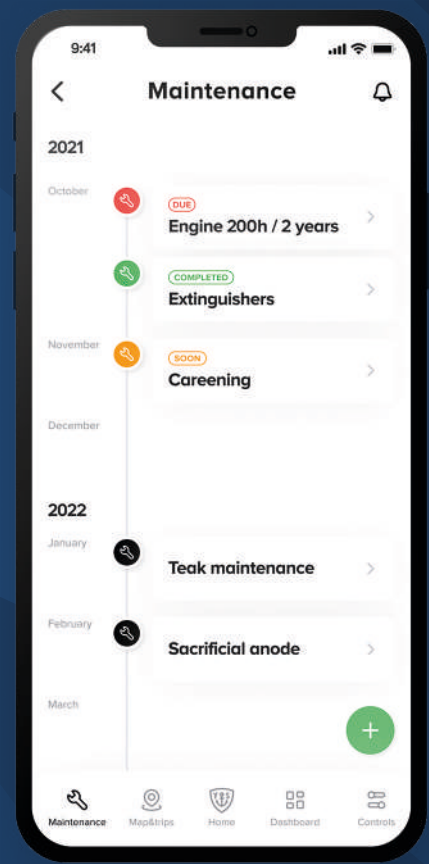
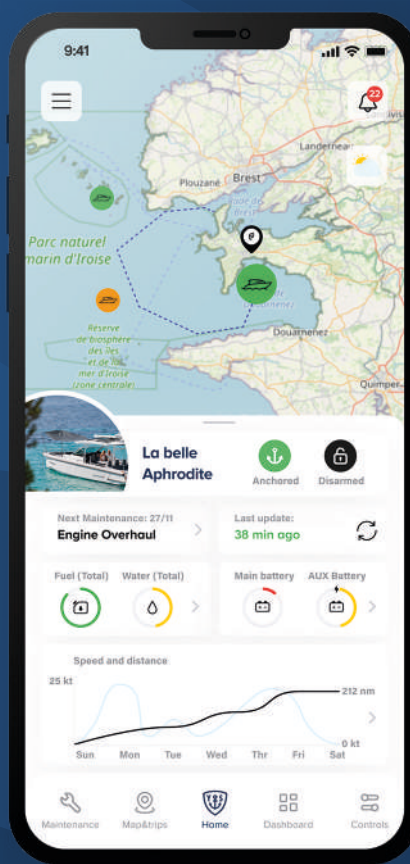
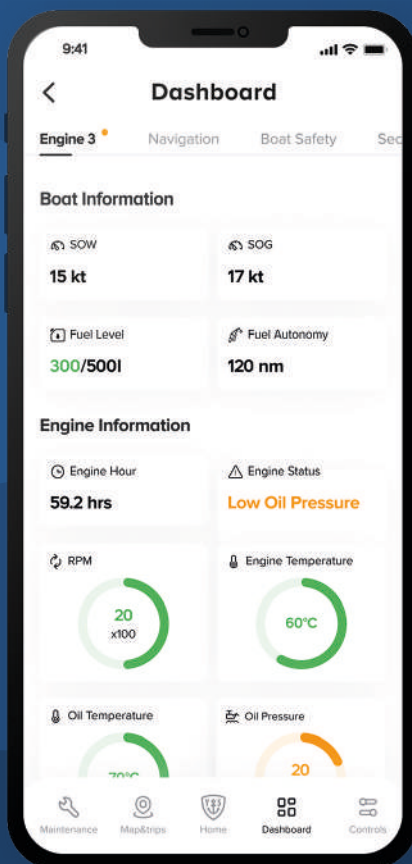


## WIDE RANGE OF ANALYTICS

Obtain key data insights about average boat usage and most frequent technical issues encountered by customers.

# YS PRO APPLICATION

*In addition to the launch of YS Pro, we recently released a brand new app for customers and we keep improving our CRM product line for businesses*



Our new user app allows boat owners to receive remotely at any time a wide range of data including engine parameters, batteries status, GPS, current and past positions, fluid levels, wind parameters,

water depth, etc. Users can also set 50+ alarms, including alarms from wireless sensors, receive service reminders, live chat with dealers, re-view user manuals/warranties, save invoices/documents, access tutorial

videos, view weather forecasts, and much more. Users can use the app as a logbook and visualise past and future maintenance works.



## A LARGE CHOICE OF PREMIUM WIRELESS SENSORS & ACCESSORIES

# A LARGE CHOICE OF *PREMIUM WIRELESS* *SENSORS & ACCESSORIES*

All our sensors have a long battery life and communicate using Zigbee 3.0 protocol. Range is 7 to 15 meters (23 to 50 feet) and a range extender is available if needed.

Battery level and signal strength of each sensor can be monitored via the YS Pro touchscreen.

Any sensors will automatically turn on the 85db built-in siren included in the High Water Sensor, the Smoke Sensor and the Heat Sensor.



Sentinel Cam 2

Waterproof wireless camera with a high definition (1080p) intelligent motion sensor



Entry sensor

Ensure that your boat is never left unsupervised



Motion sensor

Detection of occupancy, light, and temperature



Bilge Sensor with Probe

Protect your boat from sinking and water damage



Shore Power Sensor

Monitor shore power connection & range extender capabilities

*All our accessories are optional extras, so so users can customise their YS Pro system to fit their boats and their requirements.*

Some alarm sensors are built into the central unit - position, battery, tilt, G-shock and temperature - and sensors can easily be added to YS Pro at any point.



Smoke Sensor

Smoke and temperature monitoring for optimal fire detection



Heat Sensor

Temperature monitoring for optimal fire detection



Air quality Sensor

Wireless monitoring of VOC levels, humidity, and temperature



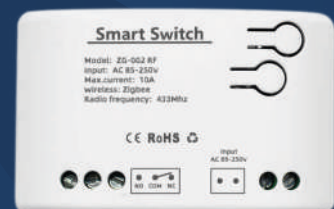
Humidity Sensor

Supervising indoor climate



Keyfob

Secure access control to your YS Pro



Smart relay 12v/24v

Turn on & off your electrical appliances remotely





**YACHT**  **SENTINEL**

Paris, France - Head office  
56 rue de Paris  
92100 Boulogne- Billancourt  
France

Telephone: +33 188 890 598  
E-mail: [sales@yacht-sentinel.com](mailto:sales@yacht-sentinel.com)