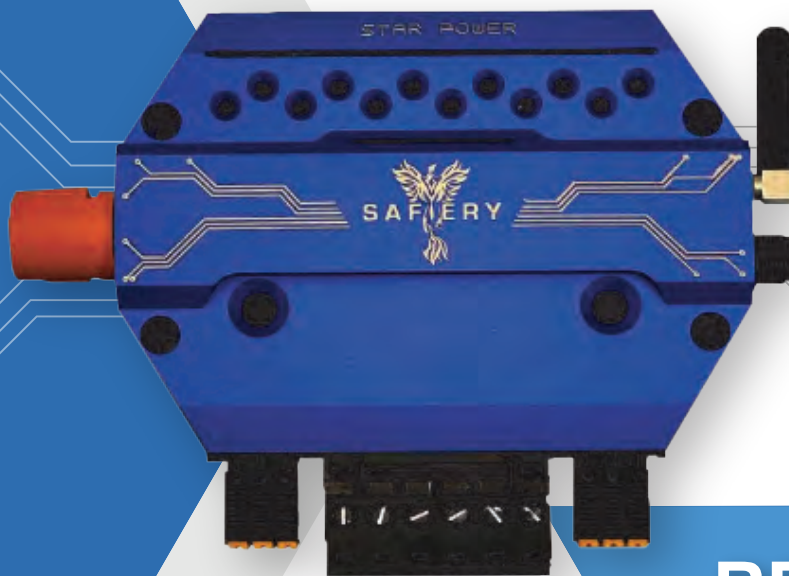


STARSHIP™

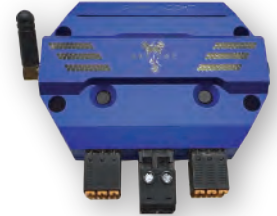
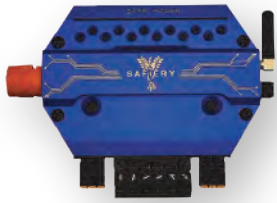
**SWITCHING NON ESSENTIAL  
12V DEVICES & LIGHTING**



**REDUCING**  
Material Cost, Weight  
Installation Time  
**Complexity**



## THREE LAYERS of COMMUNICATION with CONTROLLERS



3

## Each Layer Operates independently

## WiFi using Matter Open Protocol

- No Internet Required
- Compatible with:
  - Apple, Google, Amazon, Samsung
- Uses their native Home Control app
- Over 2,000 Compliant Devices to Connect
- Automation on Smart Phone - arrive / depart
- Energy Management with Load Shedding



2

## Long Range Bluetooth

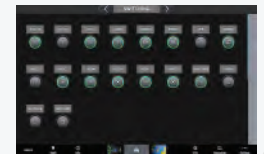
- 40m + typical range
- Battery operated Switches
- 4-6 year life
- Up to 6 switches control one device
- Easy configuration of Master/ Sub-master
- Double press feature for alternate colour
- Inexpensive and simple to deploy.



1

## CAN / NMEA

- Wired Connection
- MFD Control



The Bluetooth connectivity uses the new long-range 802.15.4 transport layer. Results are 100m range line of sight and 40m through metal skins. This is used for the wireless physical switches and the Radar Tank Monitoring. They operate independently of the other communication methods with high encrypted security. They are battery operated with a minimum of 4 year life.

## Simplified Interoperability with any Smartphone's Native Home Control

Amazon, Apple, Google, and Samsung committed to a common standard for interoperability in 2022 called "Matter". It works seamlessly with over 2,000 devices including fridges, air conditioners, fans, lights, and more, all from a single app on any of these smartphones.

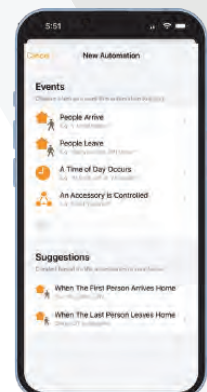
**THREADIP™** is a Matter compliant system designed specifically for 12V DC devices in a marine environment. The clever part by Safiery was integrating CAN/NMEA functionality and long-range Bluetooth devices into one system.

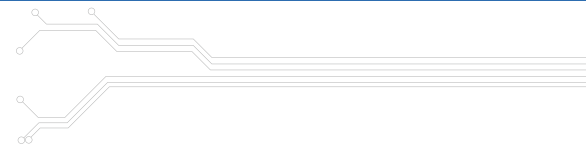
## Simplified Smart Automation and Convenience

**THREADIP™** automation capabilities simply follows the home control automation available on your Smartphone.

As you approach your boat, lights can automatically adjust based on the time of day, and non-essential systems can shut down when you leave. With AI integration, your system becomes even smarter, offering voice control and real-time language translation based on your smartphone's settings.

The Smartphone does the "programming" previously programmed by engineers into digital control systems. Time and cost is avoided and user flexibility is at new heights.





**The user benefit of this architecture:** a system can be completely delivered with NMEA & wireless switching. When the user wishes to add automation, Smartphone App control or remote cloud monitoring, they simply install Matter as an overlay network. The user can redefine switch modes, and scene automation without programming by others. This enhances utility at reduced overall cost.

**The commercial benefit to the boat builder is a significant reduction in installation complexity:** Installation time, cabling cost and weight, commissioning time and troubleshooting time are all at an absolute minimum. Simplicity of use allows for end user changes at minimum cost.



STAR-POWER

(IP54)  
150A  
6 x 30A  
6 x 10A Dimmable  
2 Control Inputs  
CAN / NMEA / RVC



STAR-LIGHT

(IP 54)  
40A  
12 x 10A Dimmable  
H-Bridge Capability  
2 x RGBW Colour Capability  
CAN / NMEA / RVC



STAR-ROVER 4

(IP68)  
40A  
4 x 10A Dimmable  
H-Bridge Capability  
1 x RGBW Colour Capability  
CAN / NMEA  
70mm x 50mm x 22mm



STAR-ROVER 2

(IP68)  
20A  
2 x 10A Dimmable  
H-Bridge Capability  
CAN / NMEA  
55mm x 32mm x 15mm



STAR-SWITCH

(IP22)  
Secure Wireless  
4 buttons  
Can be custom engraved  
Panel and Surface Mount  
5 year battery life



STAR-SWITCH WALL

(IP22)  
Secure Wireless  
4 buttons  
Wall Surface Mount  
4 year battery life



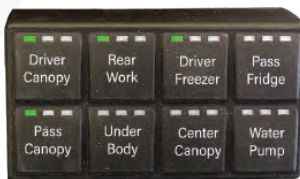
STAR-SWITCH CUSTOM

(IP22)  
Secure Wireless  
4 image button  
User Defined e-Tiles  
Wall Surface Mount  
4 year battery life



STAR-TANK

(IP66)  
Phased radar liquids level  
Fresh / Black / Grey / Fuel  
Long Range Bluetooth  
AI Auto-aligns Tank-Radar Filter  
Connects to Victron Cerbo  
5 year battery life



STAR-SWITCH SP8

(IP67)  
NMEA 2000  
8 buttons  
Rubberised Tactile Buttons  
Will be Wireless 2025 - 20yr life



STAR-TOUCH

(IP22) 7 in Touch Screen  
Secure Wireless  

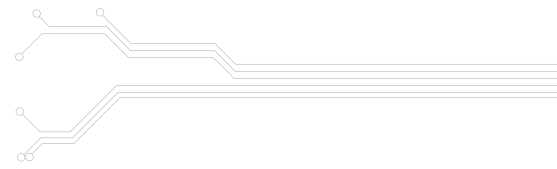
- Digital Switching
- Victron System (WiFi)
- STAR-Tank

80  
Millionths / Sec

ADVANCED FUSELESS

All STARSHIP™ Controllers  
Short Circuit Protect in 80 us  
European sourced MOSFETS  
Integrated Intelligent Design

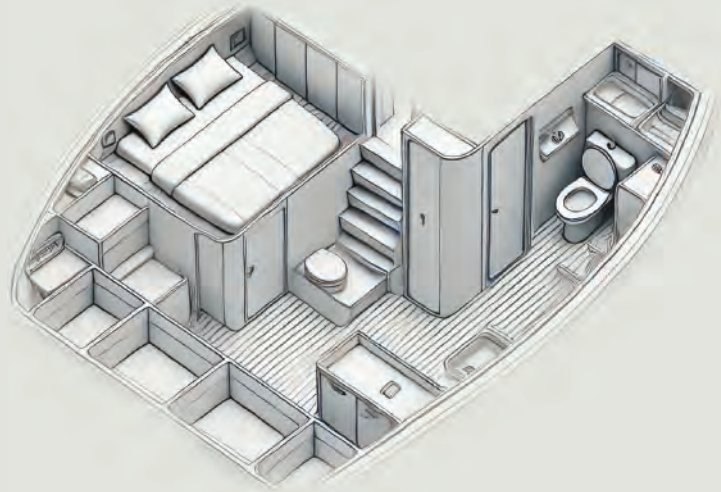




**Affordable: Switches E 48 / STAR-Light E 330**  
**Durable: Anodized Aluminium Controllers**

### From DC Switchboard

- 8mm<sup>2</sup> Positive
- 8mm<sup>2</sup> Negative
- Max current 40A
- Breaker at Switchboard "Main Cabin"



### From STAR-Light ( 12 x 10A )

1. Under cupboard floor light White
2. Under cupboard floor light Blue (LED Strip is integrated white/blue)
3. Reading Spot White His side
4. Reading Spot White Her side
5. 12V Fan
6. USB Outlets both sides
7. TV raise/lower using H Bridge 1
8. TV raise/lower using H Bridge 2
9. Overhead light (s)
10. Head Overhead light
11. Vanity Sink Light
12. Spare

## Simplicity and Savings

**NO Fuses from STAR-Light to all circuits out**  
**NO Breakers in Cabin**

**Only one cable pair to cabin**

**LED's can be Switch/Dim positive or negative**

**Has 2 x RGBW Colour Capability**

**Switches are all battery wall mounted /portable**

**Switches can be Engraved**

**Switches can switch any devices elsewhere on boat**

**7 in Wireless Display show batteries and all devices**

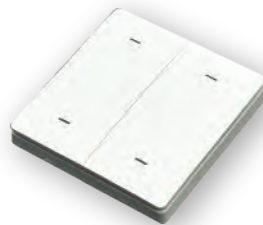


#### Wireless

#### STAR-SWITCH

#### either side of bed

- Floor Light (one press White, double press Blue)
- Reading Lights "His" On Second switch "Hers"
- Underwater Lights
- Bathroom Light



#### Wireless

#### STAR-SWITCH

#### bathroom

- Overhead Lights
- Vanity sink Lights (one press white, double press Natural, Tripple press warm white)
- Popular for ladies skin tone with makeup
- Rear Deck Aft light



#### Wireless

#### STAR-SWITCH

#### portable

- TV Raise
- TV Close
- Fan
- Any other