



MS Marine Europe Kft

Your Partner for High-End Mold Making & Complete Boat Production

Who We Are

📅 Founded 2025 | 👤 Core team 15 & 50+ production | 🌍 Location: Dezhou, China | ✅ ISO 9001

MS Marine Europe Kft, founded in early 2025, combines international hands-on experience with European quality standards.

From this expertise, our mold-making division was born — followed by the full-scale production of complete boats at our state-of-the-art facility in Dezhou, China.

A core management team of seasoned experts and over 50 skilled workers deliver complex projects with ISO 9001 certification, modern CNC technology, and maximum reliability.



What We Do?

At MS Marine Europe, we combine European production standards with the cost efficiency of Asian manufacturing — delivering tailor-made solutions at a competitive price point.



Precision Mold Making – large-scale CNC tooling for complex geometries



Complete Boat Manufacturing – from plug to finished vessel, fully modular



Serial Production Capacity – repeat orders, consistent quality



Single-Source Partnership – all phases in-house, European engineers on-site

European Quality • Up to 30% Cost Advantage • Everything from One Partner

What Sets Our Plug & Mold Building Apart?

Our plug and mold production work hand in hand – fully CNC-machined, precisely engineered, and customized to your project's unique requirements, all built to meet strict EU quality standards.

Data of the Plug

Specification	Value	Notes
Max. workpiece dimensions	20.0 × 7.5 × 3.9 m (L×W×H)	CNC machining envelope
Model core material	EPS foam	25-30 kg/m ³ density
Mold paste system	EPMOLD MP50 epoxy	High-strength formulation
Gelcoat thickness	0.5–0.8 mm	Final surface layer
Recommended radii	R5–R10	Min. R3 achievable
Surface tolerance	±0.5–1.0 mm	Post-machining

Additional Customization (on request) :

- Metal Reinforcement: Designed by MS Marine but must be approved by the Customer in writing
- Anti-Skid Surfaces: Applied only upon written request by the Customer
- Custom Markings (Engraving): Applied only upon written request by the Customer

General Mould Specs apply accordingly

Data of the Mold

Feature	Standard Mold	Prepreg Mold
Application	Hand layup and infusion processes (polyester, vinylester, epoxy)	Prepreg processing (high-end + additional costs)
Resin System	Vinylester	Zero-shrink epoxy
Tooling Gelcoat	Maxguard H7086S (vinylester-based)	Maxguard GT7068S (epoxy-modified)
Fibre Matrix	CSM300 + WR400 + 20 mm foam coat (stress zones)	CSM300 + WR400 (fully custom)
Additional Reinforcement	20 mm foam core (stress zones)	Custom per project
Min. Thickness	200mm for infusion, 100mm for hand layup	Tailored to each project's unique specifications
Post-Cure Temp.	80°C	120°C
HDT	89°C	150°C
Surface Finish	800 – 2000grit	800 – 2000 grit
Flange Width	200 mm (infusion), 100 mm (hand layup)	Determined by project
Alignment Hemispheres	Every 300 – 1000 mm	Every 300 – 1000 mm
Flange Sealing	Silicone or machined groove	Silicone or machined groove
Protection	Foam protection	Foam protection
Shipping	Container split / general cargo	Container split / general cargo

What Happens After Tooling?

We carry out **industrial boat production** starting from the first lamination step – immediately following plug and mold completion. Our modular setup allows clients to commission individual stages or a full end-to-end build – from bare hull to turnkey delivery. All planning, coordination, and technical management are handled centrally by our team, ensuring a seamless process without external interfaces. To enable reliable execution, we work with clearly defined production schedules that include unit quantities and delivery windows.

Located within a major logistics hub, we ensure fast, flexible, and global shipping of all finished units.

Key Benefits

- ✓ Aviation-grade quality standards (high-end materials & processes)
- ✓ European engineers supervising production on-site
- ✓ European project management – multilingual contacts, no language barriers
- ✓ Plug & Mould plus Production – everything from a single source, no multiple partners needed
- ✓ Flexible phase scope – from bare laminate to fully outfitted, modular and scalable
- ✓ Scalable production capacity – series production and repeat orders possible
- ✓ Cost efficiency through optimised production in Asia
- ✓ Low warranty & logistics costs thanks to strict quality checks
- ✓ Competitive pricing: from €12/kg fully assembled
- ✓ CE-ready / ISO-compliant manufacturing

Phase	Description	% Completion
1	Mold Preparation – cleaning the negative mold, applying release agent, surface polish	5%
2	Gelcoat & Lamination – gelcoat application, GFRP layup, core material if sandwich construction	20%
3	Curing & Demoulding – controlled curing, demoulding, Edge trimming, sanding	30%
4	Structural Assembly – installing stringers, bulkheads frames for structural stability	45%
5	Openings & Technical Pre- Installation – cutting Openings for windows and outlets, fitting tanks, routing Cable channels	55%
6	Assembly & Bonding – joining hull and deck, sealing, first watertightness test	70%
7	Interior Fit-Out – cabins, furniture, interior panels, Floors, basicsystems	85%
8	Electrical Systems – installing cabling, batteries, switch panels, pumps	90%
9	Final Outfitting & QC – deck fittings, hardware, final paint and antifouling, quality check, packaging for shipment	100%



How Do We Ensure Consistent Quality?

We apply internationally recognised quality standards throughout the entire production process – from design validation and tooling inspection to final QC before shipment.

Our operations are ISO 9001:2015 certified and managed by a team with European boatbuilding experience, combining hands-on production knowledge with structured, traceable quality control workflows.

◆ CERTIFICATIONS & STANDARDS

ISO 9001:2015 certified

CE-compliant hull production (on request)

EU-standard material & process documentation

Traceability of material batches (resin, core, laminate)

Testing protocols for bonding, curing, and laminating

◆ IN-HOUSE CONTROL & EXECUTION

- In-house QC at all phases (Plug, Mould, Hull, Outfitting)

- CNC accuracy: $\pm 0.5\text{--}1.0$ mm

- Surface finish control up to 2000 grit

Digital inspection reports (optional)

Continuous feedback between design and production team

Why Choose us?

Prototype delivery in as little as 60 days | Serial production from 30 days | Cost savings via local component sourcing | Scalable production capacity

We can deliver prototype boats in as little as 60 days after order placement – enabling faster concept development and earlier testing.

Serial production can start in as little as 30 days, depending on complexity. Once we receive final specifications, we can provide accurate lead times.

You don't need to worry about sourcing components yourself – we handle that for you. Whenever possible, we use locally available materials, simplifying logistics and significantly reducing both costs and lead times.

The result: fewer logistics headaches, lower overall costs, and a faster, smoother path from order to delivery.



How do we support interior design and furnishing?

For larger and more complex boatbuilding projects, we offer dedicated interior design and furnishing services – fully integrated into the production process and tailored to each client's vision.

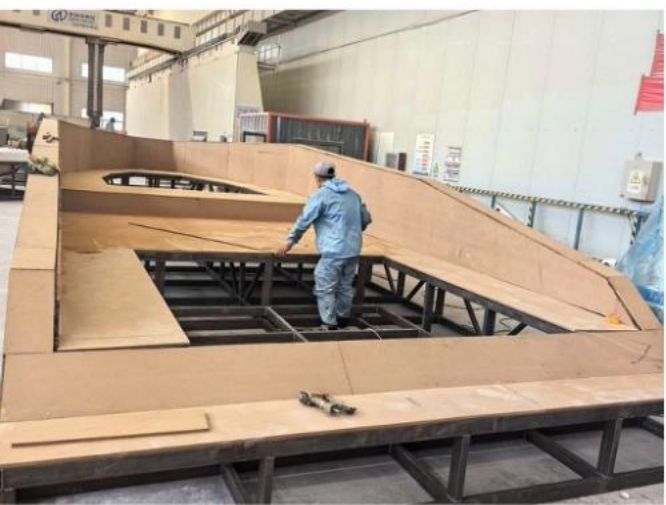
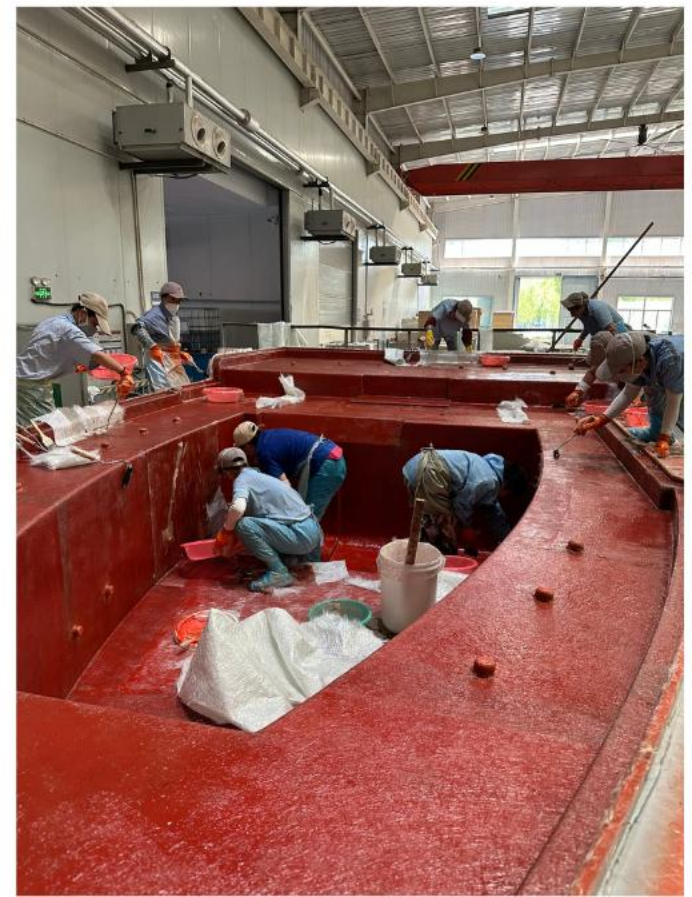
- Collaborative interior planning with the client
- Material and layout suggestions
- Style and furnishing consultation
- Integrated execution during production
- Optional: Support with final outfitting onsite

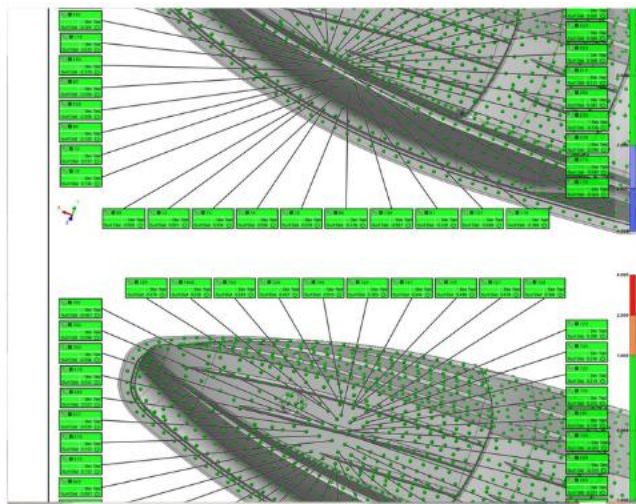


Inside our production process

The following pages provide an inside look into our facility, our production environment, and the way we work – in both process and mindset.

The first slide highlights our mould production.
The second slide gives a broader view of the facility itself.





Let's build something that lasts!

MS Marine Europe Kft

info@ms-marine.eu

www.ms-marine.eu

Budapest, Hungary

Follow us for the latest news on LinkedIn

