

# TMC Kit Performance Results

---

Professional Cleaning Solutions by Terrazza MC

---

## **Terrazza MC<sup>®</sup>**

Innovators in **green**  
**cleaning** technology

---

### **TMC Kit: Transforming Surfaces with Professional Precision**

---

The TMC Kit delivers exceptional cleaning results across various materials and surfaces. Below are direct before and after comparisons showcasing the remarkable transformation capabilities of our professional cleaning system.

---

# Concrete Tiles - Heavy Soiling

---

**Before Treatment**



**Concrete tiles** with heavy contamination from moss and years of weather exposure. The original character and color of the tiles are completely hidden under layers of organic growth and dirt.

**After Treatment**



**Restored concrete tiles** showing the original color and texture. The TMC Kit has completely removed all organic growth and contamination without damaging the tile surface.

*Result: Complete removal of moss and organic growth, restoration of natural tile color, and preparation for protective treatment.*

---

## Pavers - Weathered Surface

---

**Before Treatment**



**Paver surface** with heavy discoloration and embedded contamination. The original color of the pavers is no longer visible due to years of exposure to weather conditions and traffic.

**After Treatment**



**Fully restored pavers** with uniform color and clean joints. The TMC Kit has completely restored the original appearance of the paved surface.

*Result: Uniform color restoration, clean joints, and professional appearance suitable for public spaces.*

---

# Pavers - Municipal Application

---

**Before Treatment**



**Municipal paver installation** with moss and lichen growth covering the surface. The organic contamination affects the overall appearance of the public space.

**After Treatment**



**Professionally cleaned pavers** with complete removal of moss and lichen. The surface now meets municipal standards for public walkways.

*Result: Complete moss and lichen removal, municipal-grade restoration, and professional appearance for public areas.*

---

# Cobblestones - Historic Surface

---

**Before Treatment**



**Cobblestone surface** with weather staining and discoloration. The traditional character of the cobblestones is obscured by years of contamination buildup.

**After Treatment**



**Restored cobblestone surface** with improved visibility and safety. The surface is clean and provides better grip for pedestrians while maintaining its historic character.

*Result: Enhanced pedestrian safety, professional appearance and preservation of historic cobblestone character.*

---

# Wooden Terrace - Weather Damage

---

Before Treatment



After Treatment



**Wooden terrace planks** with grey discoloration from weather exposure and dirt accumulation. The wood has lost its natural color and appearance.

**Restored wooden terrace** showing the natural wood color and grain structure. The TMC Kit has gently removed all contamination without damaging the wood fibers.

*Result: Restoration of natural wood color, preservation of wood structure and preparation for protective treatment.*

---

# Pavers - Mixed Contamination

---

**Before Treatment**



**Paver surface with mixed contamination** - combination of lichen growth, weather staining and various types of soiling from prolonged exposure.

**After Treatment**



**Uniformly cleaned paver surface** where all materials have regained their original appearance. Consistent cleaning across different contamination types.

*Result: Consistent cleaning across different contamination types, restoration of original colors and textures.*

---

# Pavers - Commercial Application

---

**Before Treatment**



**After Treatment**



**Commercial paver installation** with heavy soiling from traffic, weather exposure and commercial use. The surface requires professional-grade cleaning for restoration.

**Professionally restored paver surface** meeting commercial standards for safety and appearance. Complete removal of all contaminants.

*Result: Commercial-grade restoration, compliance with safety standards and professional appearance for business environments.*

---

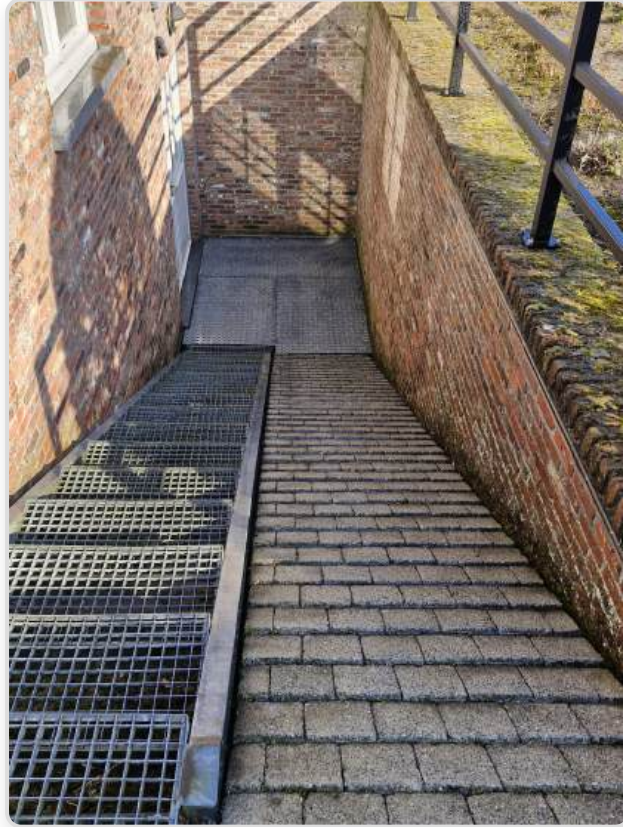
# Pavers - Precision Cleaning

---

Before Treatment



After Treatment



**Paver surface requiring careful treatment** where contamination must be removed without damage to the underlying material or surrounding areas.

**Perfectly cleaned paver surface** without any damage to the material. The TMC Kit demonstrates precision and control in sensitive applications.

*Result: Targeted cleaning without collateral damage, preservation of material integrity and perfect end result.*

---

# Concrete Tiles - Restoration Project

---

**Before Treatment**



**Concrete tile surface requiring comprehensive restoration** with decades of contamination, lichen growth and weather exposure. The original characteristics and details of the tiles are completely hidden.

**After Treatment**



**Fully restored concrete tile surface** showing the original details and characteristics. Careful cleaning has completely removed lichen growth and preserved the surface for long-term use.

*Result: Complete restoration of original appearance, effective lichen removal and preparation for protective treatments.*

---

# Concrete Tiles - Terrace

---

**Before Treatment**



**After Treatment**



**Terrace concrete tile surface** requiring careful cleaning to remove contamination and weathering effects while maintaining the surface integrity.

**Clean terrace concrete tiles** with all surface features maintained and complete removal of contamination elements.

*Result: Successful terrace restoration with maintained surface integrity and removal of harmful elements.*

---

# TMC Kit Specifications

---

## Professional Performance Features

- **Versatility:** Effective on concrete tiles, pavers, cobblestones, wooden terraces and mixed materials
- **Precision:** Targeted cleaning without damage to sensitive surfaces
- **Power:** Removal of heavy commercial contamination and stubborn stains
- **Safety:** Environmentally responsible solutions suitable for public spaces

## Target Applications

The TMC Kit is specifically engineered for **professional gardeners** and **municipal workers** who require reliable, efficient and effective cleaning solutions for outdoor surfaces and materials requiring professional-grade maintenance.

## Application Areas

- Municipal maintenance and city cleaning
- Professional garden and landscape projects
- Commercial and industrial surface cleaning
- Historical restoration and heritage preservation
- Terrace and patio cleaning
- Public spaces and walkways
- Cobblestone and heritage surface maintenance

---

## Conclusion

The TMC Kit delivers consistent, superior results across a wide range of applications and surface types. From municipal maintenance to specialized restoration projects - the TMC Kit provides the reliability and performance that professionals demand.

The comprehensive before and after comparisons presented in this document demonstrate the transformative power of our cleaning solutions, showcasing real-world results across concrete tiles, pavers, cobblestones, and wooden surfaces.

# Terrazza MC<sup>®</sup>

Innovators in **green**  
**cleaning** technology

---

## **Terrazza MC - Professional Cleaning Solutions**

*For more information about the TMC Kit and other professional cleaning solutions, please contact Terrazza MC.*

*© 2025 Terrazza MC. All rights reserved.*