

Get in touch

+31 (0)184 413 789

sales@bloklandnonferro.nl

# Blokland




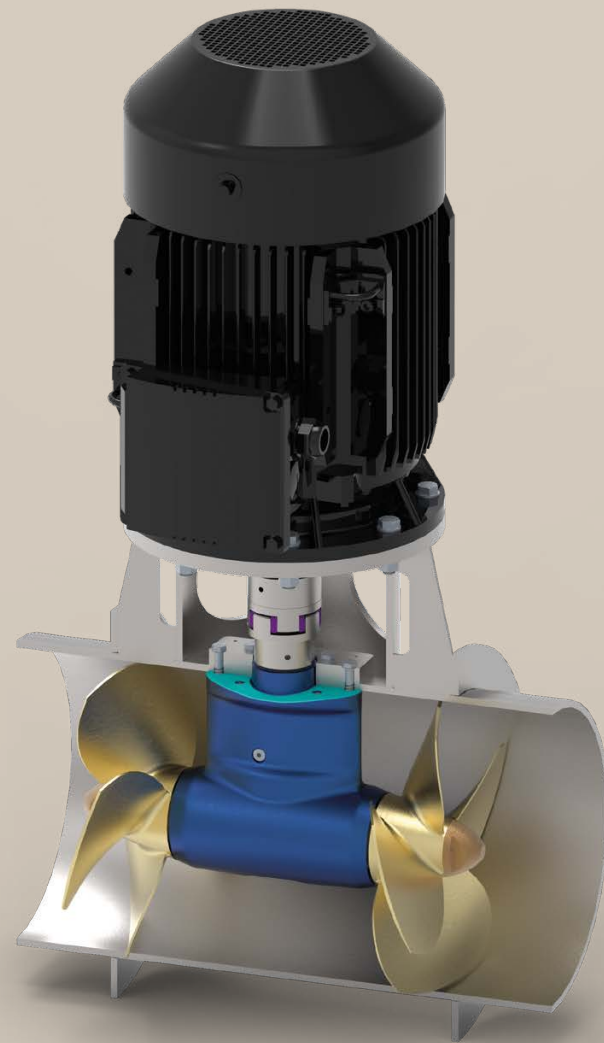
**Keep  
Moving  
Forward**

**High-standard  
propulsion  
solutions**

[www.bloklandnonferro.nl](http://www.bloklandnonferro.nl)

# Tunnel Thruster

By:  Current Motion



## From 35 kW to 150 kW

For safe and easy mooring, support during fishing or dredging and operation under dynamic positioning, tunnel thrusters are a good technical and economical solution.

Counter Rotating Propellers

## Electric or hydraulic driven

Tunnel thrusters positioned at the bow or stern of a vessel, can increase the maneuverability and support dynamic position operations. We can supply electric or hydraulic motor-driven tunnel thrusters from 35 kW to 100 kW in single propeller and 45 kW to 150 kW counter rotating execution. CR tunnel thrusters can be chosen for vessels with limited draught or low noise requirements. Depending on the vessel hull material, the tunnel structures can be manufactured in steel, aluminum, or GRP.

## Control by systems

A full plug and play system is incomplete without a main control panel with joystick. Our touchscreen control panels are built for durability and are easy to use. Several options are available, varying from simple budget solutions to integrated custom solutions. Interface for full integration with dynamic positioning systems is available. Features are user-friendly, joystick for stepless control, compact and high-quality panels.



Single Propeller

## Product features

- Noise reduction** Quiet and durable gearcase with Klingelberg Zyklo Palleid type bevel gears, designed with KISSsoft software.
- Flexible solution** Easy plug-and-play systems. Multiple options.
- Optimal comfort** Special low noise designed propellers for optimal comfort (10 to 15 dB noise reduction)

## Technical information

### Single Propeller

Type	Power	Est thrust	Prop Diam	OD tube (STD 10mm wt)		Unit length	
	kW			kN	mm	inch	mm
CMT35S	35	4,7	375	16,0	401	14,9	561
CMT45S	45	6,1	425	18,0	452	19,3	584
CMT55S	55	7,5	475	20,0	503	28,3	687
CMT75S	75	10,5	575	24,0	605	35,0	769
CMT100S	100	15,5	775	32,0	803	35,0	960

### Counter Rotating Propellers

Type	Power	Est thrust	Prop Diam	OD tube (STD 10mm wt)		Unit length	
	kW			kN	mm	inch	mm
CMT45CR	45	6,2	375	16,0	401	22,5	557
CMT55CR	55	7,6	425	18,0	452	25,2	593
CMT75CR	75	10,1	475	20,0	503	29,9	748
CMT100CR	100	14,0	575	24,0	605	35,0	780
CMT150CR	150	22,3	775	32,0	803	40,8	947



# Propulsion systems for superyachts

We truly enjoy engineering and producing propulsion and rudder systems. We keep you moving forward with our high-tech propulsion solutions.

Thanks to our in-house engineering and production capacity, we deliver propulsion systems which are optimized for your application. Every yacht is unique. Therefore, we approach each project with the same, extensive expertise but a tailored point of view.

Within propulsion and rudder systems, our portfolio focuses on yachts ranging from 5 to 70 meters in length.

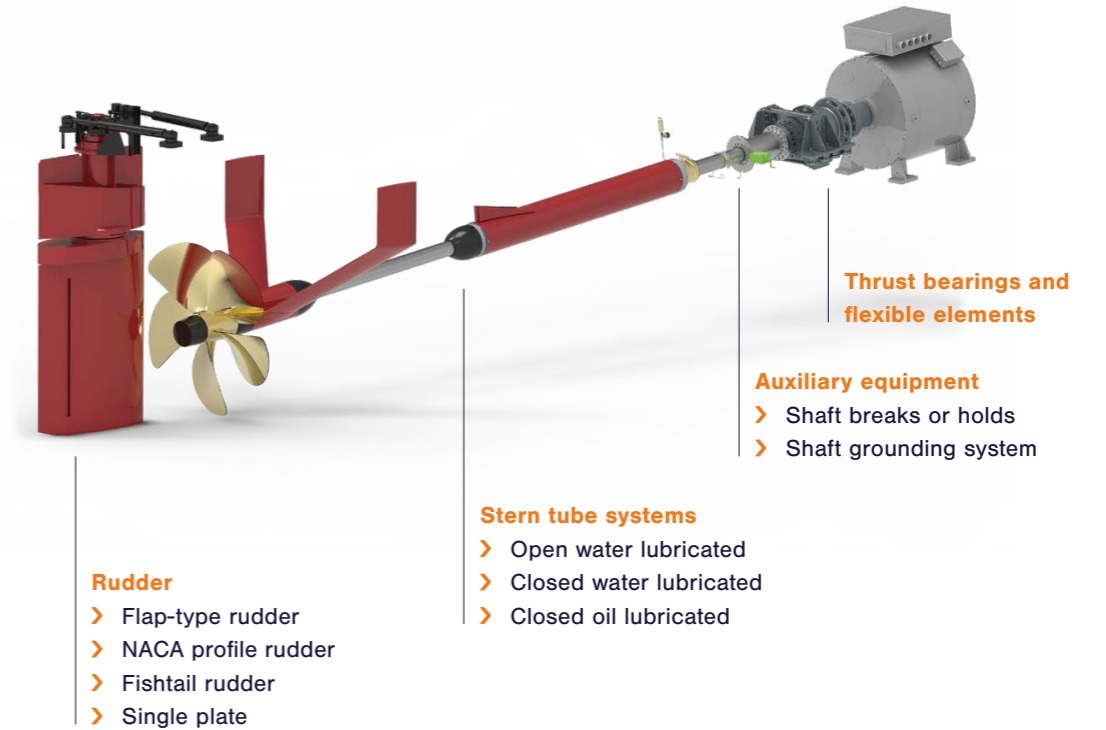
## AxiSeal shaft seals

For water and glycol lubricated systems we are using our own AxiSeal mechanical shaft seal. The AxiSeal is maintenance free and allowed to handle axial shaft movement of  $\pm 10\text{mm}$  and radial shaft movement of  $\pm 2\text{mm}$ .

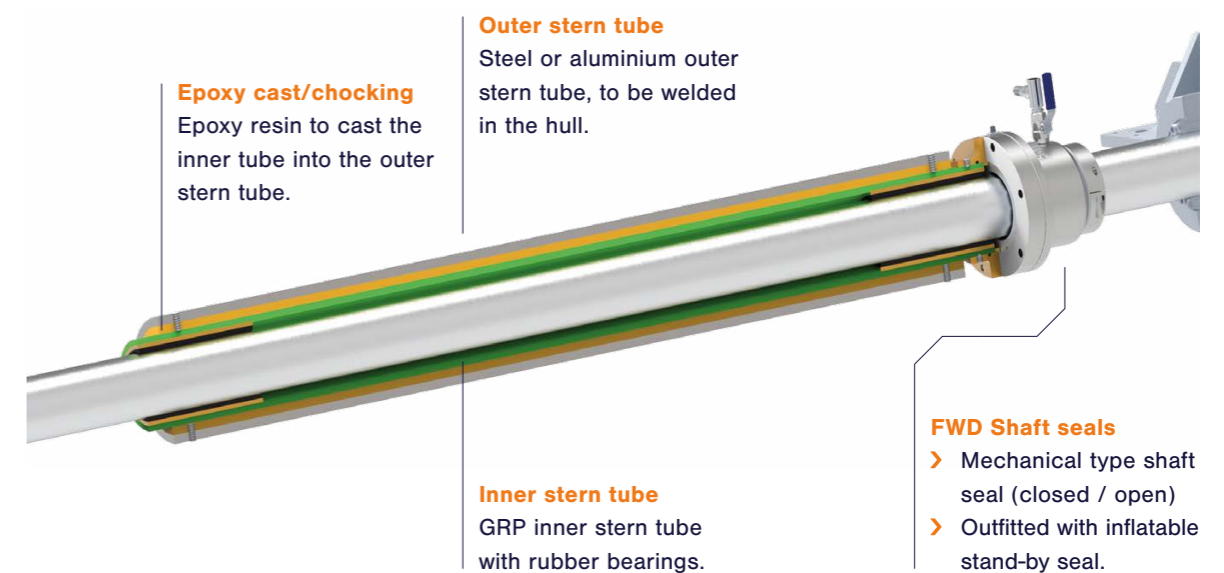
We are also able to deliver a Standby Seal (emergency seal) for inspection or emergency situations. The AxiSeal is type approved by Bureau Veritas and RINA.



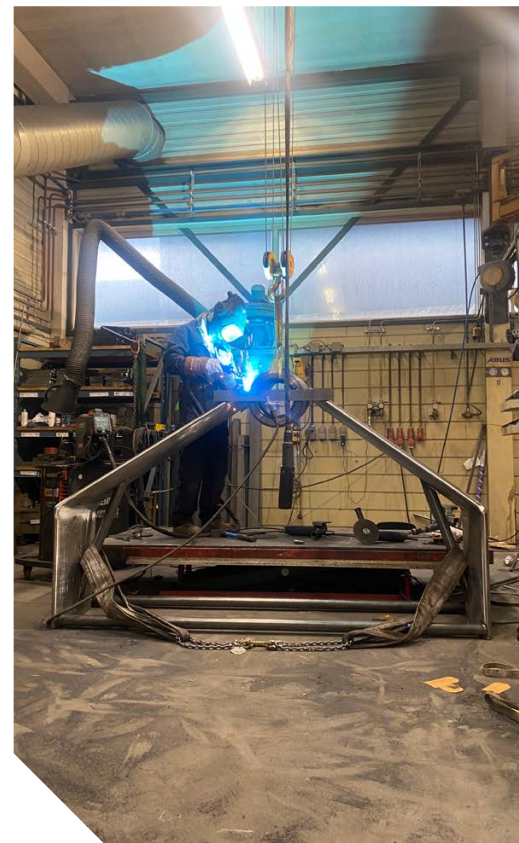
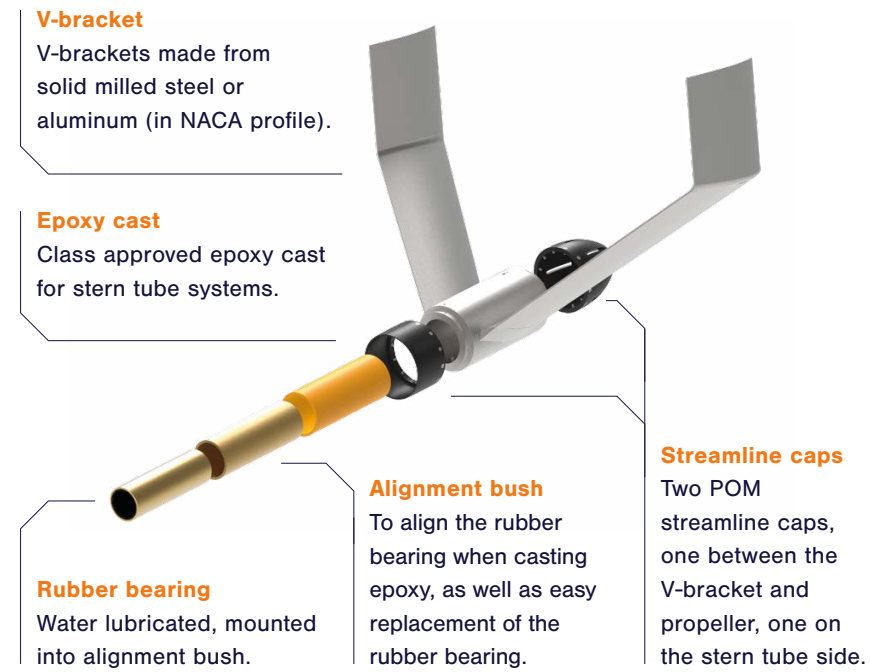
## Propulsion systems: Yachts



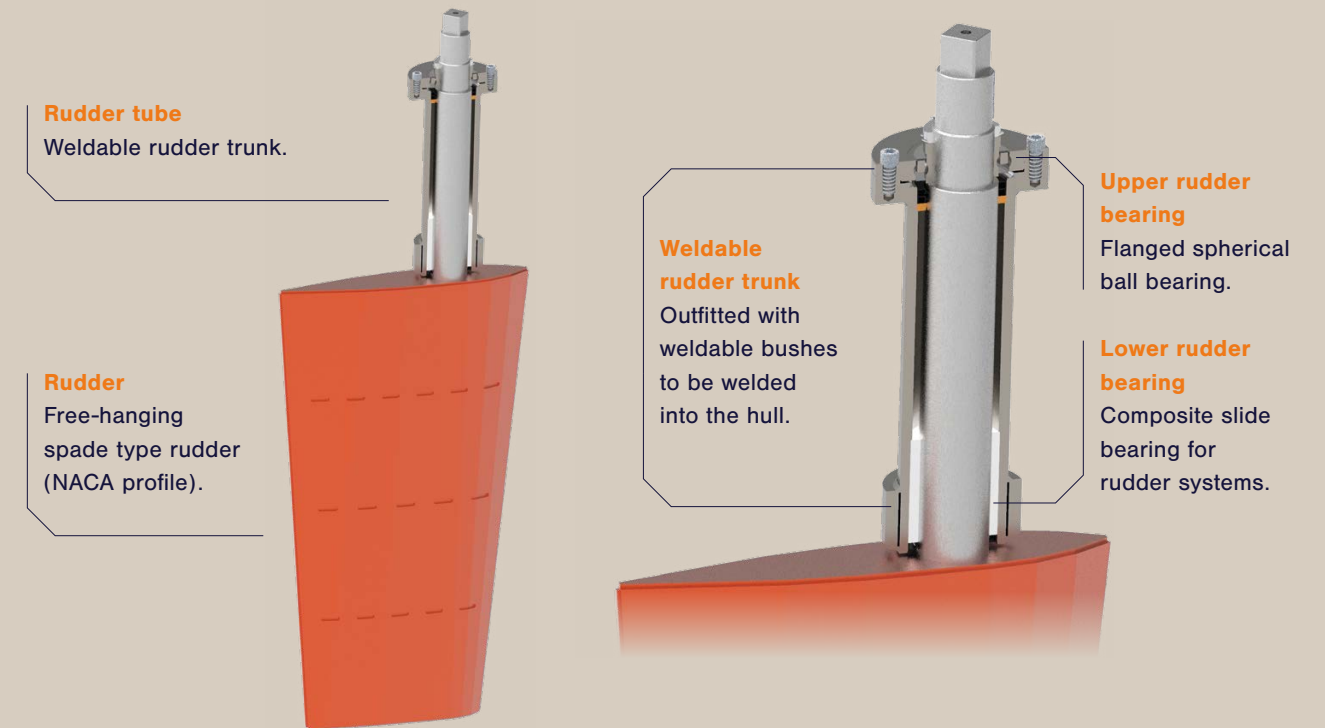
## Stern tube system (open lubricated)



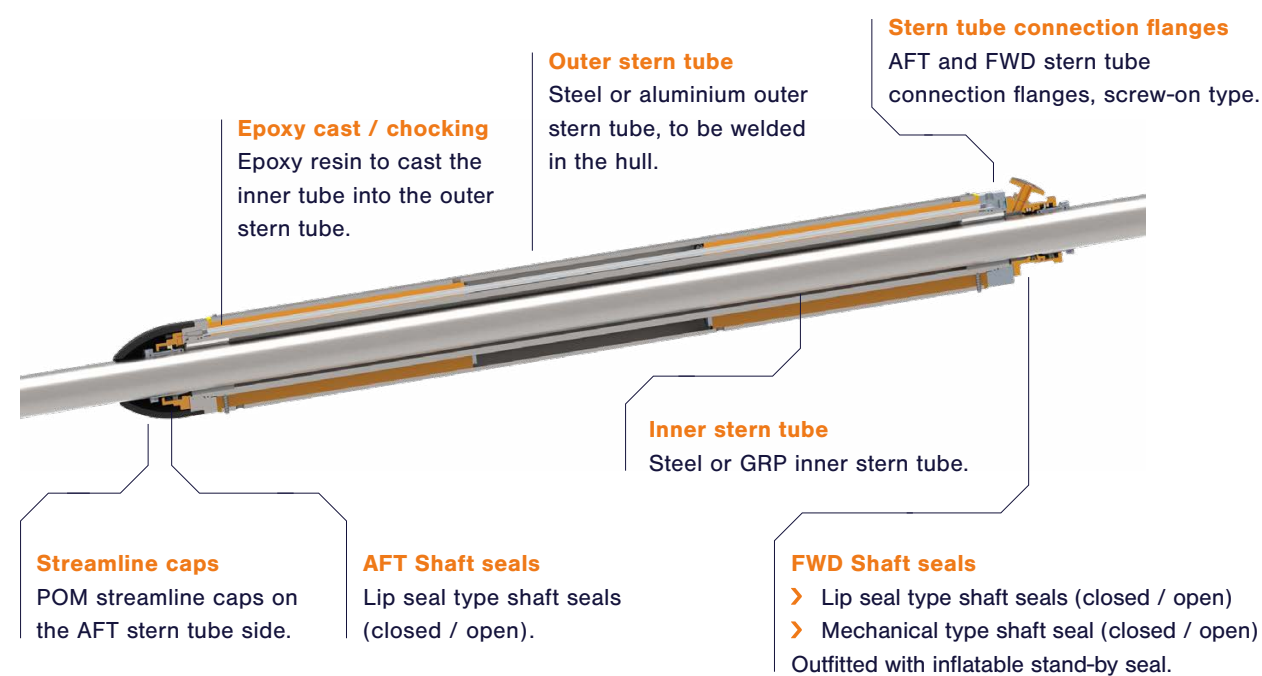
## V-brackets with cast-in alignment bush & bearing



## Rudder systems (weldable rudderstock)



## Stern tube system (closed lubricated)



## Rudder systems (cast-in with epoxy resin)

