

Identification of aphids and their natural enemies in horticulture

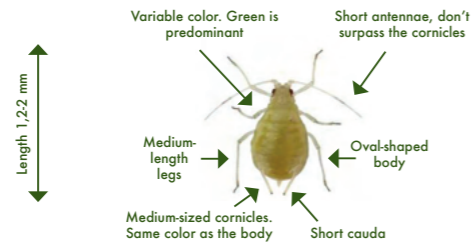
NATURAL ENEMIES

Aphidius-System <i>Aphidius colemani</i> 	Ervi-System <i>Aphidius ervi</i> 	Aphelinus-System <i>Aphelinus abdominalis</i> 	Matricariae-System <i>Aphidius matricariae</i> 	Aphidoletes-System <i>Aphidoletes aphidimyza</i> 	Sphaerophoria-System <i>Sphaerophoria rueppellii</i> 	Eupeodes-System <i>Eupeodes corollae</i> 	Chrysopa-System <i>Chrysopa carnea</i> 	Micromus-System <i>Micromus angulatus</i> 	Propylea-System <i>Propylea quatuordecimpunctata</i> 
--	---	--	--	---	---	---	---	--	---

APHIDS



Myzus persicae subsp. Persicae



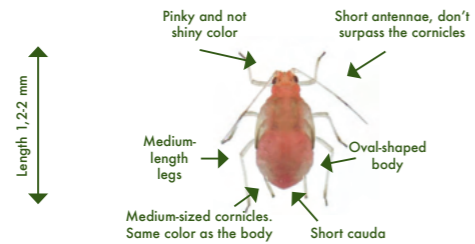
Aphidius-System 	Eupeodes-System 	Sphaerophoria-System 	Aphidoletes-System 	Chrysopa-System 	Micromus-System 	Propylea-System 
--	---	--	--	---	---	---



Note: biopesticides can be used as a corrective measure. Please contact your local Biobest advisor for more information.



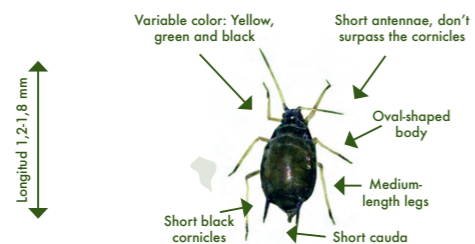
Myzus persicae subsp. Nicotianae



Matricariae-System 	Eupeodes-System 	Sphaerophoria-System 	Aphidoletes-System 	Chrysopa-System 	Micromus-System 	Propylea-System 
---	---	--	--	---	---	---



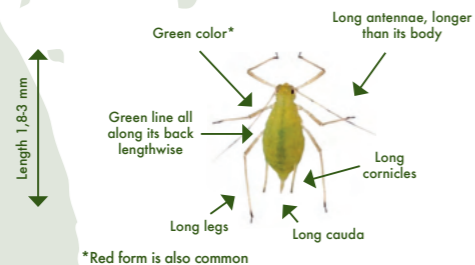
Aphis gossypii



Aphidius-System 	Eupeodes-System 	Sphaerophoria-System 	Aphidoletes-System 	Chrysopa-System 	Micromus-System 	Propylea-System 
--	---	--	--	---	---	---



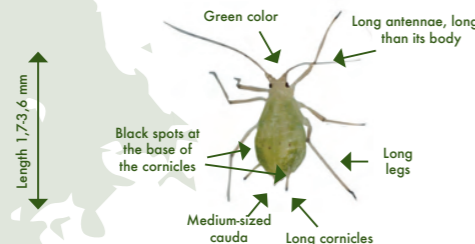
Macrosiphum euphorbiae



Ervi-System 	Aphelinus-System 	Eupeodes-System 	Sphaerophoria-System 	Aphidoletes-System 	Chrysopa-System 	Micromus-System 	Propylea-System 
--	--	---	--	--	---	---	---



Aulacorthum solani



Ervi-System 	Aphelinus-System 	Eupeodes-System 	Sphaerophoria-System 	Aphidoletes-System 	Chrysopa-System 	Micromus-System 	Propylea-System 
--	--	---	--	--	---	---	---



Local regulations may impose restrictions on the use of these products. Contact your authorities or contact your Biobest consultant. Use plant protection products safely. Read the label and product information before use, and apply in accordance with specified directions for use.