

# forte

## Exhaust duct cleaning system

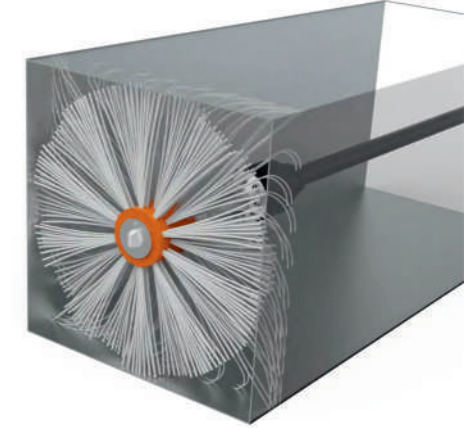
**Pneumatic** rotary brush unit, for the cleaning of kitchen exhaust ducts and industrial facilities up to **1000 mm | 39.3 inch of diameter**.

- Powerful pneumatic motor [11.6 Nm max. torque] necessary for to remove all types of grease and dirt.
- 30 meters | 98.4 inch of semi-rigid hose that allows to work vertically [up and down], horizontally, and to make 90° bends.
- 100% stainless steel motor for greater durability and maintenance free.

## PNEUMATIC

For ducts up to  
**1000** mm

Rotary shaft length  
**30** m



### Brushes

Different materials and sizes for all types of ductwork. **DUO Square system** for effective cleaning in square ducts.

### Carrying handle

Easy handling for transportation.

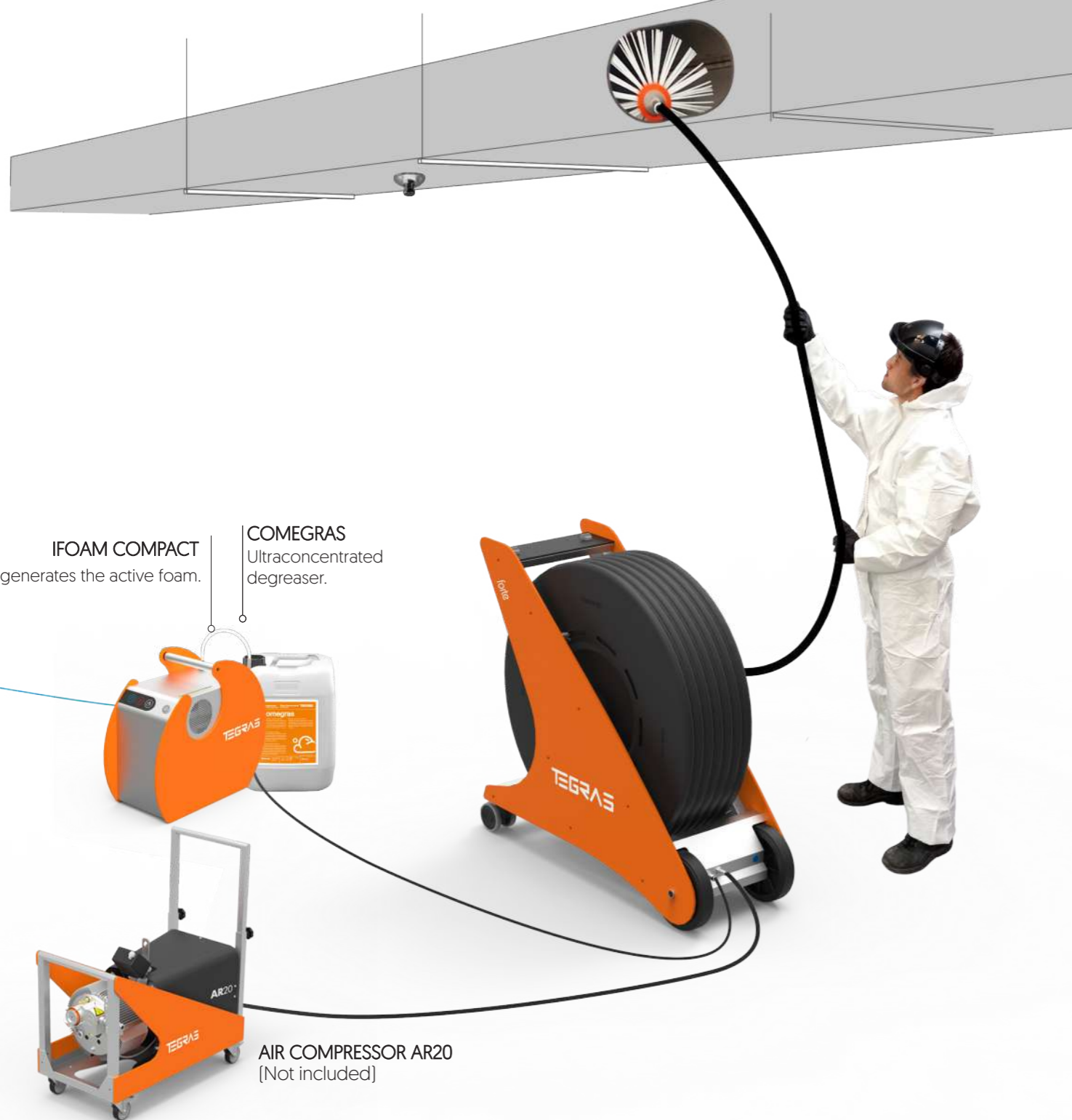
### Shaft guard

Facilitates its take-up and protects it when you are on the move.

### Dual direction of rotation

Left | Right





IFOAM COMPACT  
generates the active foam.

COMEGRAS  
Ultraconcentrated  
degreaser.

AIR COMPRESSOR AR20  
[Not included]

## OPTIONAL ACCESSORIES ▼

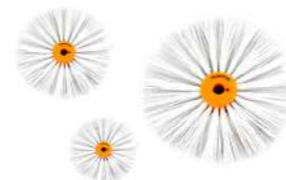


**BRUSH CENTRALISE.**  
For ducts from 19.7 inch to  
39.3 inch  
AC3303130



**ANTI-BREAKAGE  
PROTECTOR** for the shaft  
and hose.  
AC3303112

## CONSUMABLES ▼



**PACK 5 MIXED BRUSHES.**  
Steel +nylon. For carbonized  
grease. Ø200 | 300 | 400 | 500  
| 600 mm Ø7.8 | 11.8 | 15.7 | 19.7  
| 23.6 inch  
CP1302828



**PACK 5 BRUSHES EXTREME.**  
Brushes for extreme cleaning.  
Ø300 | 400 | 500 | 600 /700 mm  
Ø11.8 | 15.7 | 19.7 | 23.6 | 27.5 inch  
CP2300515

**PACK 5 NYLON BRUSHES.**  
Indicated for the removal of  
medium-hard grease. Ø300 |  
400 | 600 | 700 | 800 mm  
Ø11.8 | 15.7 | 23.6 | 27.5 | 31.5 inch  
CP1101520

**PACK 5 BRUSHES PBT.**  
Indicated for fatty residue of  
medium-high hardness. High  
abrasion power. Ø200 | 300 |  
400 | 500 | 600 mm  
Ø7.8 | 11.8 | 15.7 | 19.7 | 23.6 inch  
CP1203030



**COMEGRAS.**  
Ultraconcentrated  
degreaser.  
10 kg | 22 lb Container  
PQ8100122



The centering device fixes the brush in the center  
of the duct.

## TECHNICAL FEATURES **forte**

Motor supply (Maximum power)	Compressed air 300 l/min 6,3 bar   10,6 cfm – 6,3 bar
No-load rotational speed	500 r.p.m.
Rotation speed at full power	236,7 r.p.m.
Torque at max output	6,5 Nm   57,5 lbf.in
Minimum starting torque	8 Nm   70,8 lbf.in
Stall torque	11,6 Nm   102,7 ibf.in
Noise level	< 70 dB
Direction of rotation	Right   Left
Control system	Pneumatic
Control panel	Valves
Dimensions (L x W x H)	1025 x 1162 x 430 mm 40,35 x 48,98 x 16,93 in
Weight	67 kg   147,71 lb
Hose length	30 m   98 ft
Structure material	Stainless steel and HDPE

