

**TRYSIL RMM**

ROAD MARKING MACHINES

INNOVATING ROAD MARKING MACHINES

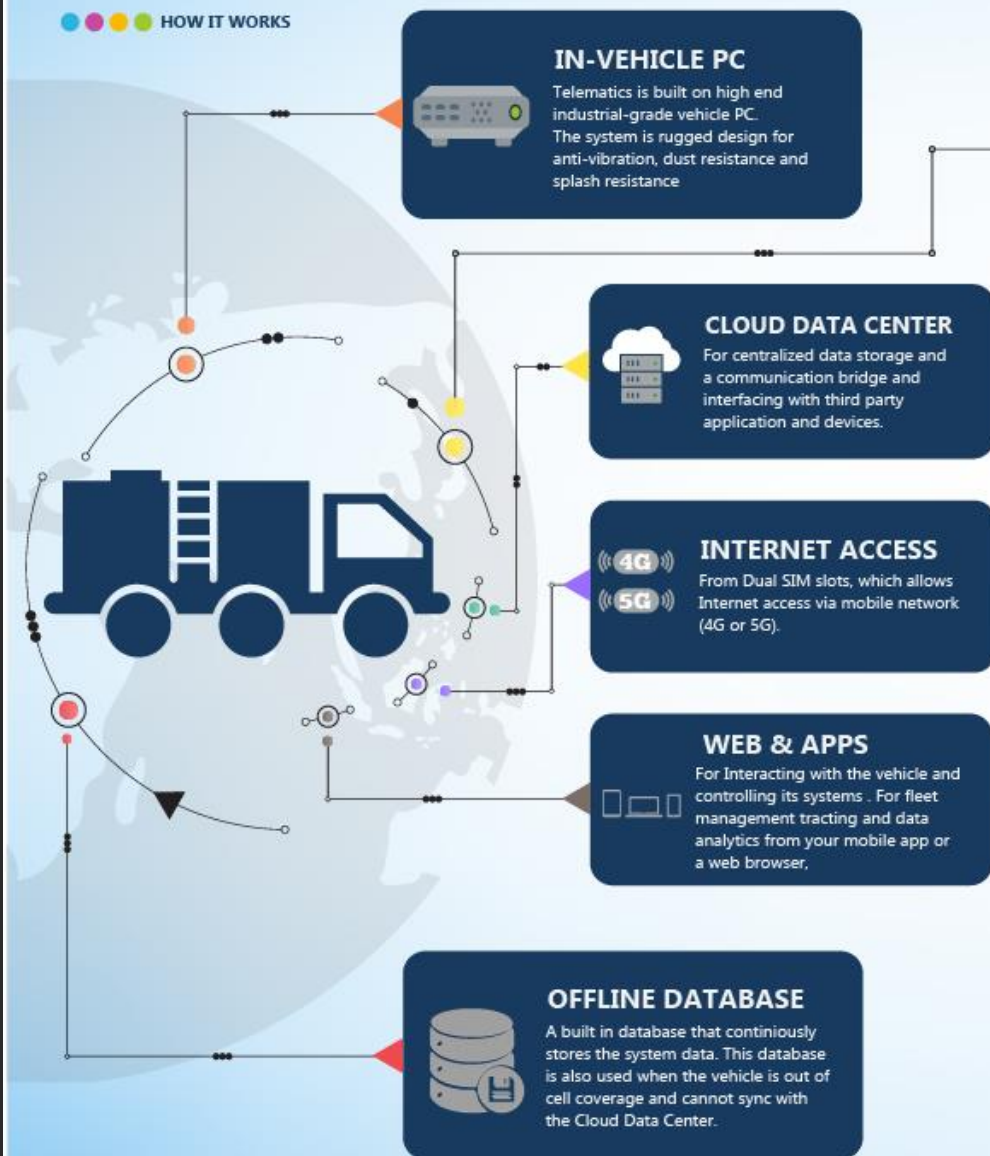
# TRMM TELEMATIKK TRYSIL CONNECT



## TRYSIL RMM TELEMATICS

Trysil RMM AS manufactures world class road marking machines. These machines can be equipped with a Telematics system that stores and submit road marking related data and information, which can then be accessed online. Quick support from Trysil RMM team and device update can be done through the Telematic system.

●●●● HOW IT WORKS



## TRYSIL MASKIN CLOUD DATA CENTER

Each Telematic device has a secure connection to Trysil RMM's cloud based Data Center, where the device can continuously or periodically upload its data. That data is then accessible through our web and mobile applications or our API that supports connection from third party developed application.



## API, WEBAPP and REMOTE-APP

Our Telematic API, WebApp and Remote Application provide functionalities like interacting with the vehicle and controlling its systems from your mobile app or the web browser, fleet management and tracking, Job assignment and data analytics, and report generation.

## ACCESS SHARE



### DATA PRODUCER

Producer gets full administrative right to all the functionality that is associated with them, like the database, device control, fleet management, tracking and geo-fencing.



### TRYSIL RMM AS

Trysil RMM also has access for administrating, remote support and device update.



### THIRD PARTY

The third party access is optional & allows the data producer the ability to share the data and reports with their contractor or any other third party they choose.



## About Trysil Connect

---



Remote diagnostics and software updates



Remotely controlled preheating via mobile phone



Collection and analysis of machine operating data



Send job list to machine

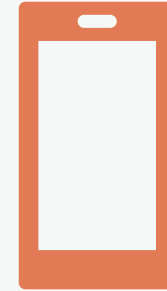


Report production data from machine



Status side

Operator side



## Remotely controlled preheating via mobile phone

- Remote start of burners and monitoring of temperatures
- Remote start of agitators and hot oil pumps
- Alarm notification

# TRMM

## APP CONTROL

TRYSIL CONNECT



TRMM

## Status side

Overview

T1 paint temp	T1 oil temp	T1 burner	ON
200°C	90°C	T1 mixer	OFF
T2 paint temp	T2 oil temp	T1 alarm	ON
115°C	220°C	T2 burner	OFF
T3 paint temp	T3 oil temp	T2 mixer	ON
35°C	100°C	T2 alarm	OFF
T4 paint temp	T4 oil temp	T3 burner	ON
200°C	120°C	T3 mixer	OFF
		T3 alarm	ON
		T4 burner	OFF
		T4 mixer	ON
		T4 alarm	OFF

Oil pump yellow	OFF	Diesel level	78%	Hydro-temp alarm	OFF
Oil pump white	OFF	Applicator temp L	180°C	Hydro-level alarm	OFF
Platform light(s)	OFF	Applicator temp R	210°C	Fuel level alarm	OFF

TRMM

## Operator side

Startup controls

	Burners	Mixers
T1	OFF	OFF
T2	OFF	OFF
T3	OFF	OFF
T4	OFF	OFF

	Paint temp setting	Current value
T1	<input type="range" value="200"/>	200
T2	<input type="range" value="115"/>	115
T3	<input type="range" value="35"/>	35
T4	<input type="range" value="200"/>	200

	Oil temp setting	Current value
T1	<input type="range" value="90"/>	90
T2	<input type="range" value="220"/>	220
T3	<input type="range" value="100"/>	100
T4	<input type="range" value="120"/>	120

Oil pump yellow	OFF
Oil pump white	OFF
Platform light	OFF