

MADBrain
AutoPilot

The AI Technology Revolutionizing Your Navigation



MAD  TEC



MADBrain
AutoPilot

The Champion's Co-Pilot, Now Accessible to All

Introducing MADBrain, the autopilot that emulates the techniques of the **world's best skippers!** Developed and continually refined by a team of passionate engineers specializing in artificial intelligence and control systems, MADBrain offers unparalleled precision, intelligence, and reliability in automatic steering.

Widely adopted in the racing world and a key partner in numerous victories in Ultim, Imoca, Class 40, and Mini 6.50 races, it is now available for you.

Easy to integrate and intuitive to use, it perfectly adapts to all types of boats and applications, from leisure to competition. More than just a next-generation autopilot, MADBrain is a high-tech, smart, and connected device that pushes your boat's limits. Say goodbye to disengagements and yawing!

Whether you're an amateur sailor or a seasoned professional, MADBrain transforms every journey into an unparalleled experience in terms of performance and safety.



Ambrogio Beccaria
Victory Class 40
Transat Jacques Vabre
2023



Erwan Le Roux
Victory Multi 50
Route du Rhum
2022



Yannick Bestaven
Victory IMOCA
Vendée Globe
2020-2021



Charlie Dalin
Victory IMOCA
Rolex Fastnet
2023



Carlos Manera
Victory Mini 6.50
Mini Transat
2023

#ADOPTED BY THE WORLD'S BEST SKIPPERS



Yannick Bestaven

Skipper Imoca, Maître Coq,
Winner of Vendée Globe 2021

“ **Impressive route stability!**

I could confidently push under pilot in the southern seas. It's the revelation of this Vendée Globe. Thank you, Madintec!



Caroline Boule

Skipper Mini 6.50, Nicomatic,
Record of Distance on 24 hours

“ **This autopilot is awesome!**

I learned how to adjust it and let it steer all night during the 24-hour record while there were 25-30 knots of wind outside! What you're doing is amazing, thank you!

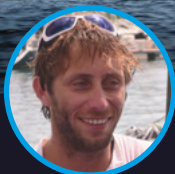


Ian Lipinski

Skipper Class40, Crédit Mutuel,
Winner of Transat Jacques Vabre 2019

“ **MADBrain performs wonderfully!**

We will never hold the helm again and break the 24-hour record under autopilot!



Ambrogio Beccaria

Skipper Class 40, Allagrande Pirelli

“ **The autopilot steers better than we do!**

We have been attentive and found new driving modes.



Discover testimonials from champions on [madintec.com](https://www.madintec.com)!

#ESSENTIAL PARTNER FROM CRUISING TO RACING

The autopilot is an indispensable piece of equipment that takes over the helm for you. Why settle for anything less than the best for your boat? While a standard autopilot can reach its limit and disengage when faced with heavy swell, MADBrain maintains its course without fail, ensuring safety and performance in all conditions.

● YOU ARE PASSIONATE OF CRUISING AND TRANSOCEANIC?



Demand a trustworthy co-pilot for your comfort and safety. MADBrain is a user-friendly solution that ensures peace of mind on your voyages.

● YOU RACE IN IRC, TRANSQUADRA, MINI TRANSAT, FASTNET, ARC ?



Optimize every detail of your performance and stand out from the competition. MADBrain takes the helm for you and contributes to your victories!

● YOU ARE A PROFESSIONAL SKIPPER OR A RACING TEAM ?

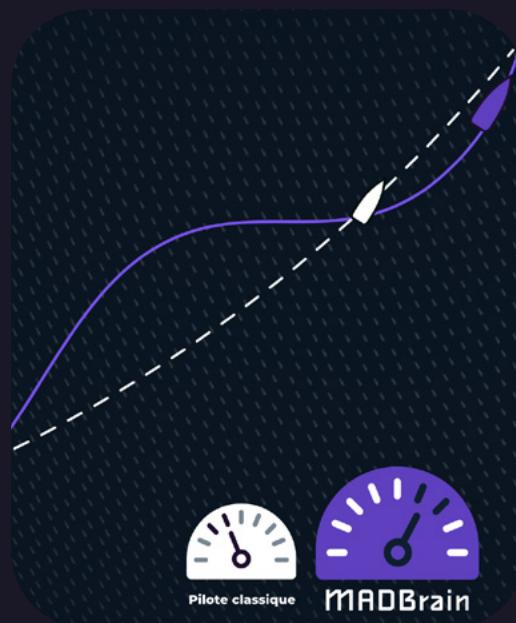


Join the Madintec Team: you will benefit from a tailored equipment for your boat and from a dedicated service during your preparation and up to 24/24 during races.

#STABLE STEERING IN ALL CONDITIONS

Experience unmatched steering quality! Thanks to its ultra-fine sensor analysis and sophisticated algorithms, MADBrain interprets sea and wind variations with extreme precision, controlling the actuator to within a tenth of a degree. Even in the most challenging sailing conditions, it autonomously stabilizes the boat's heel and finds the optimal balance between speed and safety.

- **High-Precision Steering**
- **Control Within a Tenth of a Degree**
- **Ultra-Fine Wind Measurement**
- **Proprietary Inertial Unit**
- **Heel Management**
- **Smooth Jibing Curves**
- **Energy Efficient**



#SIMPLICITY OF USE

With MADBrain, navigation becomes simple and intuitive. The MADRemote (wired and wireless) allows immediate control: 1 CLICK = 1 ACTION.

This ease of use lets you focus on what matters most: sailing.

- **1 Click to Activate Compass and Wind Modes**
- **1 Click for Tacking and Jibing**
- **1 Click to Activate Super-Pilot Modes**

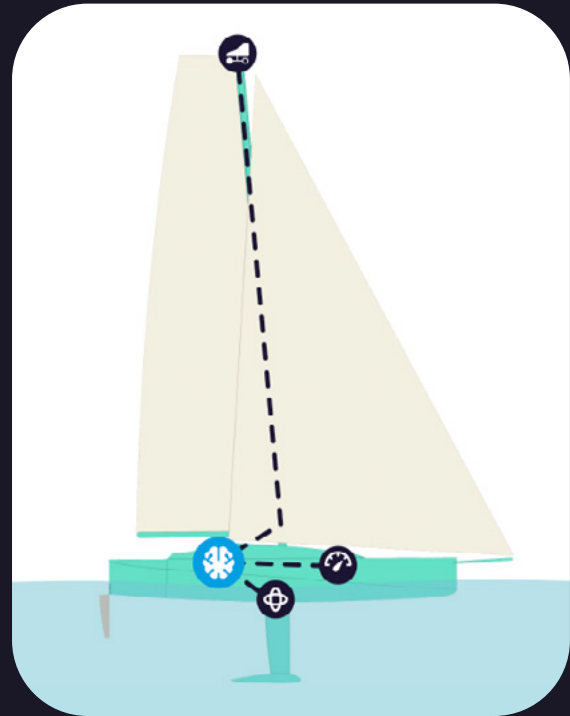


#CONTINUOUS IMPROVEMENT THROUGH AI

MADBrain continuously improves through artificial intelligence!

The central unit records and analyzes sensor data to learn to react in a personalized way for each equipped boat. This adaptability ensures a steering performance that evolves with you and your boat.

- **Artificial Intelligence**
- **Continuous Improvement**



#ENHANCED SAFETY

MADBrain is a significant plus for your safety. Even in the toughest sea conditions, it prevents disengagements and maintains exemplary stability. It's your reliable ally at the helm.

- **MULTIHULLS HEEL SECURITY PACK (option)**

MADBrain defines the maximum heel limit and issues a safety action command to the autopilot in case of an exceedance.

- **ANTI-CAPSIZE ACS (option)**

On boats equipped with load sensors and sail release systems, MADBrain analyzes the data and triggers the release systems in case of an extreme situation.

#OPTIMAL PERFORMANCE

The MADBrain ELITE upgrade transforms your autopilot into a true champion.

With its various "SUPER-PILOT" modes, MADBrain replicates the steering behavior of the best racers seeking maximum performance. It accelerates in low wind and unloads in gusts to offer you thrilling sensations. No complex settings required: the modes adjust themselves autonomously.

Simply press the  button and be amazed!



● **SUPER-PILOT "APPARENT WIND TRACK"**

Compensates for apparent wind variations to maintain a stable speed.
Ideal in low winds and rough seas!

● **SUPER-PILOT "HEEL" (upwind and downwind)**

Calibrates a minimum and maximum heel range not to exceed.
Ideal in unstable wind conditions and strong gusts.

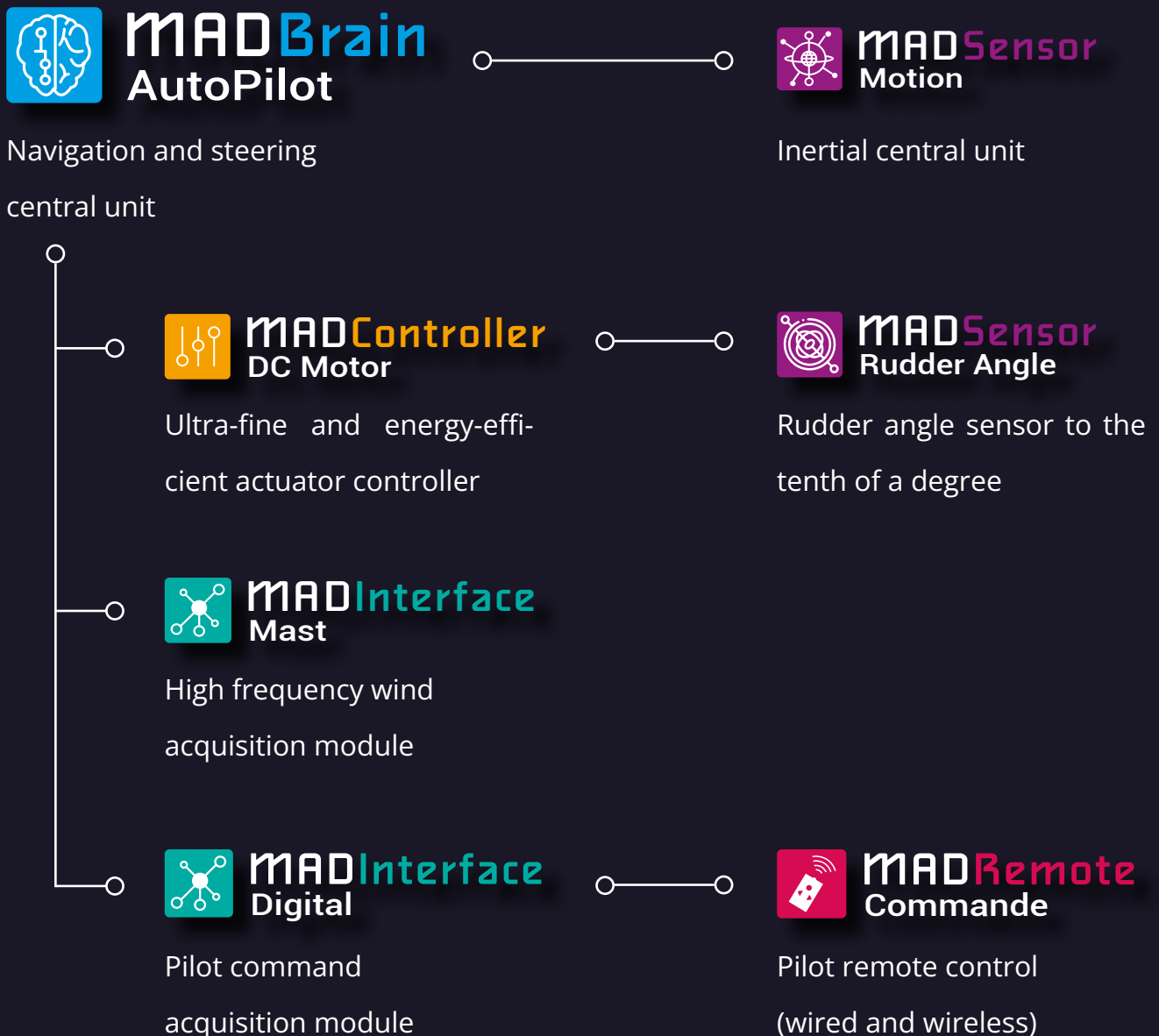
● **SUPER-PILOT "SPEED"**

Calibrates a minimum and maximum speed range not to exceed.
Ideal for optimizing speed while maintaining a safety threshold.

#SEVEN MODULES, EACH DEDICATED TO A SPECIFIC FUNCTION

The MADBrain system consists of seven high-quality proprietary modules linked by Madintec's bus CAN. Each module is dedicated to a specific function, ensuring the highest precision of analysis and steering. Also, this configuration offers great flexibility in the evolution of the system to make you benefit from a continuous improvement. The modules, 100% manufactured in France, are designed to withstand the marine environment.

Composition of the MADBrain Autopilot System:

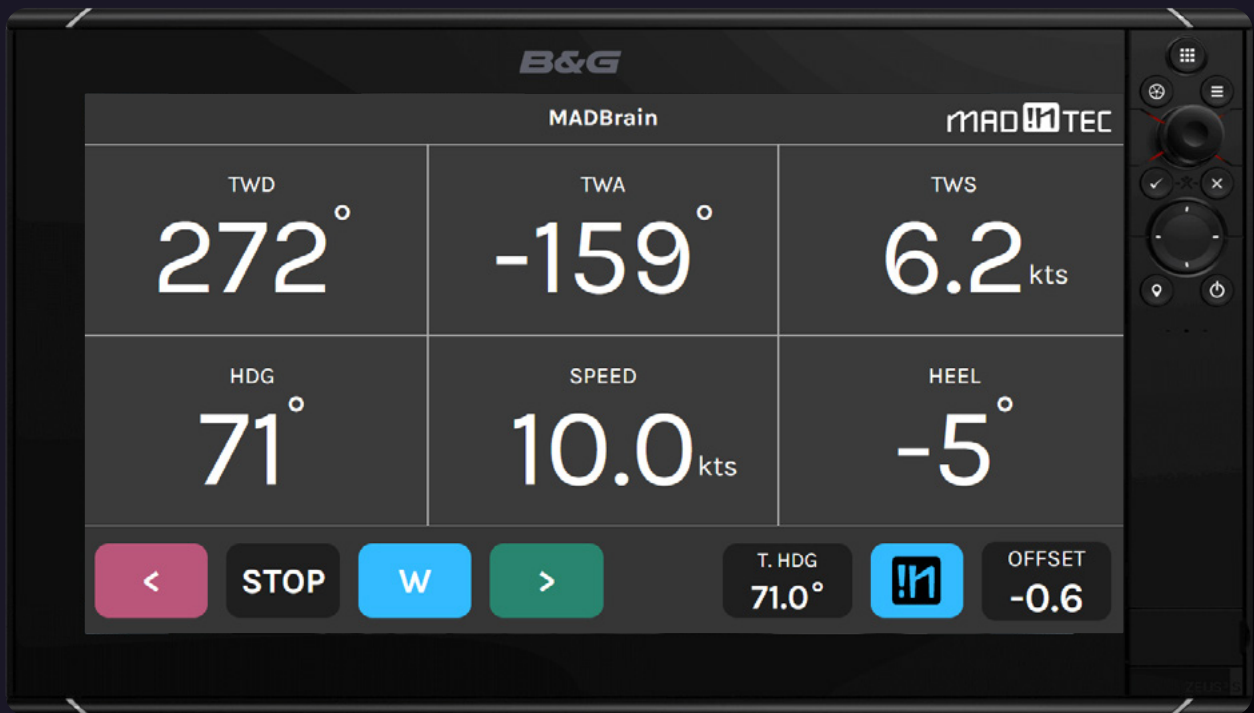


#COMPATIBILITY AND ERGONOMICS

MADBrain is fully compatible with most major brand displays, sensors, and multifunction screens such as B&G and Garmin. Its compatibility with the NMEA2000 protocol ensures standardized installation and seamless integration.

The ergonomically designed interface offers comprehensive and intuitive visualization of navigation data across all your equipment.

- Compatibility with B&G, Garmin, and other sensors and displays
- Standardized integration: CAN bus and NMEA 2000
- Ergonomic and intuitive interface



#ADVANTAGE COMPARISON

MADBrain excels in data acquisition, steering quality, compatibility and support. Compare with other systems on the market:

	Madintec MADBrain	B&G H50000 WTP	NKE GYROPILOT HR	B&G Triton NAC-3
PROCESSOR				
True wind calculation	● ● ●	● ●	●	●
Wind correction table	YES	YES	YES	-
Processing Reliability	● ● ●	● ●	● ●	●
Automatic Detection and Management of Sensor Faults	● ● ●	●	●	-
STEERING QUALITY				
Real Wind Tracking	● ● ●	●	● ●	●
Steering Precision	● ● ●	●	● ●	●
AI Learning	YES	-	-	-
Super-Pilot Modes	● ● ●	-	● ●	-
Ease of Use	● ● ●	●	●	●
Energy Efficiency	● ●	●	●	●
COMPATIBILITY				
NMEA 2000 Connectivity	YES	YES	-	YES
Integration and Installation Time	● ●	● ● ●	●	● ● ●
Compatibility with Industrial Sensors	YES	-	-	-
SUPPORT				
Updates	YES	YES	YES	-
Remote Access	YES	-	-	-
Usage Logs	● ●	●	●	-

#FLEXIBLE PRICING AND OPTIONS

MADBrain is available in two versions. Simply choose the pack that suits your needs. Looking for a specific configuration? Don't hesitate to contact us for a custom offer.

PRICE EXCL.VAT *

PACK MADBRAIN AUTOPILOT

15 255 €

Includes Madintec analysis and autopilot system:

MADBrain Autopilot, MADController DC Motor , MADSensor Rudder Angle
MADSensor Motion, MADInterface Mast, MADInterface Digital,
MADRemote - Wired

UPGRADE MADBRAIN ELITE

6 000 €

Includes Madintec Super-Pilot modes (requires the pack Madbrain Autopilot):

Super-pilot "Heel" (upwind and downwind)
Super-pilot "Speed"
Super-pilot "Apparent wind track"

UPGRADE MULTIHULL SECURITY

Multihull Heel Security *(requires the pack Madbrain Autopilot)*
Anti-Capsize (ACS) System
(requires load sensors and release system)

2 500 €

2 500 €

OPTIONS

MADRemote Wireless Emitter	180 €
MADRemote Wireless Receiver	685 €
MADRemote Wired	385 €
MADInterface Mast	575 €
MADInterface Analog	1 650 €

* Prices are excluding taxes. The packs do not include cabling and installation fees.
Madintec reserves the right to modify the prices without notice.

#A TEAM OF PASSIONATE EXPERTS AT YOUR SERVICE

Madintec is a team of PhD engineers specializing in artificial intelligence, control systems, and electronics, with a strong passion for sailing. Our ambition is to democratize access to cutting-edge technology for all sailors. We work daily to innovate and deliver reliable, high-performance and turnkey solutions for the future of yachting.



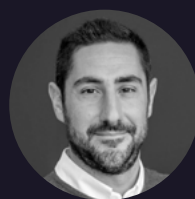
Matthieu ROBERT
Founder et CEO



Benoît PIQUEMAL
Electronics Director



Mathilde TRÉHIN
Scientific Director



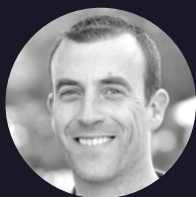
Paolo SERIO
Commercial Director



Hugo KERHASCOET
Scientific Director



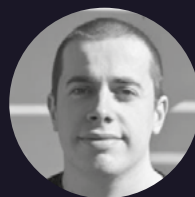
David LE MOING
Support Engineer



Jérémie GUILLOT
Design Engineer



Pia MATHIAS
Research Director



Louis EMARD
Web Developer



Didier GUARDIOLA
Administrative Assistant



MAD  TEC



[madintec.com](https://www.madintec.com)

infos@madintec.com

+33 (0)9 72 60 76 43