

JUDO PREMIUM LINE | QC-Class up to 1¼"



TO THE POINT

JUDO Premium Backwash Protective Filters
and Domestic Water Stations



A leak in the water pipe? Devices and fittings show damages?
The smallest rust, dirt and sand particles that can get into the
house installation via the water inlet are often responsible for this.

SMALL PARTICLES BIG DANGERS

Without a protective filter, dangerous electrochemical elements can develop. These lead to corrosion points, to pitting corrosion and finally to pipe breakage. In addition, these particles cause malfunctions in taps, affecting the valuable ceramic cartridges and damaging them.

The result is an unavoidable and costly replacement. High-quality sanitary appliances and sensitive devices, such as control and regulating devices, are also damaged by these tiny particles.

The expensive consequences of not having a filter

- ✓ Foreign particles flushing in
- ✓ Clogged aerators
- ✓ Reduced water flow
- ✓ Pitting corrosion in unprotected pipes
- ✓ Damage to equipment
- ✓ Operational malfunctions
- ✓ Expensive maintenance and repairs

Trust the Germ Protection Class

JUDO's backwash protective filters protect water pipes, taps and connected appliances effectively and cost-efficiently. In JUDO filters, the water flows outside to inside through the sieve. As a result, coarse and fine-grained impurities are visibly retained. The special advantage: the sieve does not need to be replaced, but is cleaned in the blink of an eye during backwashing. This is done with the so-called point-rotation system. The filter insert is backwashed point by point with filtered water in a particularly hygienic way without interrupting the water supply. The condition of the sieve insert can be checked at any time from the outside through a sight glass.

Protective filters are mandatory

The enormous importance of protecting the domestic installation is made clear by multiple laws and regulations. Standards, such as DIN 1988-200, prescribe filters and demand clean piping systems without corrosion particles.

On the one hand, to protect human health, but also to protect technical equipment, drinking water installations, sanitary fittings and water heaters from damage in the long term.



Call function: If the owner scans the QR code on the protective filter housing with the JU-Control App, he receives a reminder on his smartphone for each upcoming backwash

DVGW's quality tests focus on safety, hygiene and environmental protection. With a DVGW certification, product manufacturers document that the "generally recognised rules of technology" are complied with.

Installation speed record! In just 10 seconds, QC filters are mounted on the JUDO QUICKSET-E built-in rotary flange: The filters convince with a revolutionary connection technology that requires only one screw ($\frac{3}{4}$ " - $1\frac{1}{4}$ ") which can be conveniently tighten from the housing front.

The advantages of the QC filters

- ✓ User-friendly new design: optimised readability due to inclined manometer and temperature display
- ✓ Unique Germ Protection Class: incomparable thorough back wash due to the point-rotation system and thus best purity and hygiene
- ✓ Maximum power: easy filter sieve backwashing with the concentrated power of a water jet
- ✓ Long-lasting, hygienic and cost-saving: no need for expensive filter sieve change
- ✓ Clean: reliable and safe protection against dirt entry
- ✓ Convenient installation: either in horizontal or vertical pipes, with the built-in rotary flange JUDO-QUICKSET- E ($\frac{3}{4}$ " - 2")
- ✓ Installed in a flash: the single-screw technology with a concealed screw ($\frac{3}{4}$ " - $1\frac{1}{4}$ ")
- ✓ Unique in its class: available in sizes $\frac{3}{4}$ " up to DN 200
- ✓ Optional: leakage protection JUDO ECO-SAFE can be integrated
- ✓ Best quality



Stainless steel
sieve mesh



THE SELECTION



PROFI-QC
Backwash protective filter

PROMI-QC
Domestic water station

The PROFI-QC represents the entry into the Germ Protection Class.

The Premium Protection Filter with extended functions.

Advantages

- ✓ Mains pressure and temperature display
- ✓ Call function

- ✓ Pressure reducer that compensates for pressure fluctuations and thus protects household appliances and fittings
- ✓ Saves up to 150 euros in water costs per year in a single-family home
- ✓ Adjustable pressure between 1.5 and 6 bar
- ✓ Upstream and downstream pressure can be read on the unit
- ✓ Call function
- ✓ No backflow into the public supply network



PROFIMAT-QC
Automatic backwash protective filter

PROMIMAT-QC
Automatic domestic water station

Clearly more comfort: self-cleaning through automatic backwash.
Additional advantages over the manual version:

The pinnacle of what is possible. Our top model in terms of equipment and functionality.
Additional advantages over the manual version:

Advantages

- ✓ Integrated emergency power supply, JUDO Safety-Module, which completes the backwash process in the event of a power Failure and closes the flush valve.
- ✓ LCD display with keyboard control
- ✓ Automatic backwash in two versions:
 1. AT version: backwashing takes place according to time intervals, adjustable from 4 hours to 50 days.
 2. ATP version: backwashing is controlled by time intervals and differential pressure. Ideal for use with fluctuating water quality or recirculating water.

- ✓ Integrated emergency power supply, JUDO Safety-Module, closes the flush valve in the event of a power failure during backwashing
- ✓ display with keyboard control
- ✓ Automatic backwashing takes place according to time intervals; adjustable from 4 hours to 50 days.

BACKWASH WITH MAXIMUM POWER

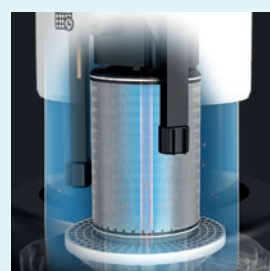
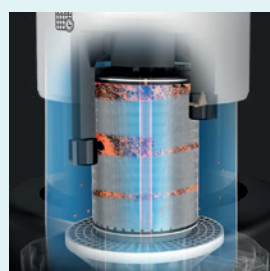
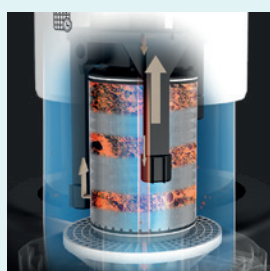
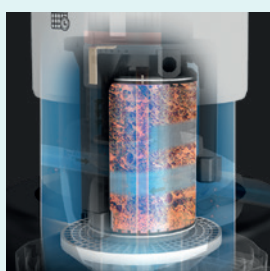
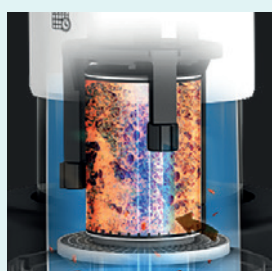
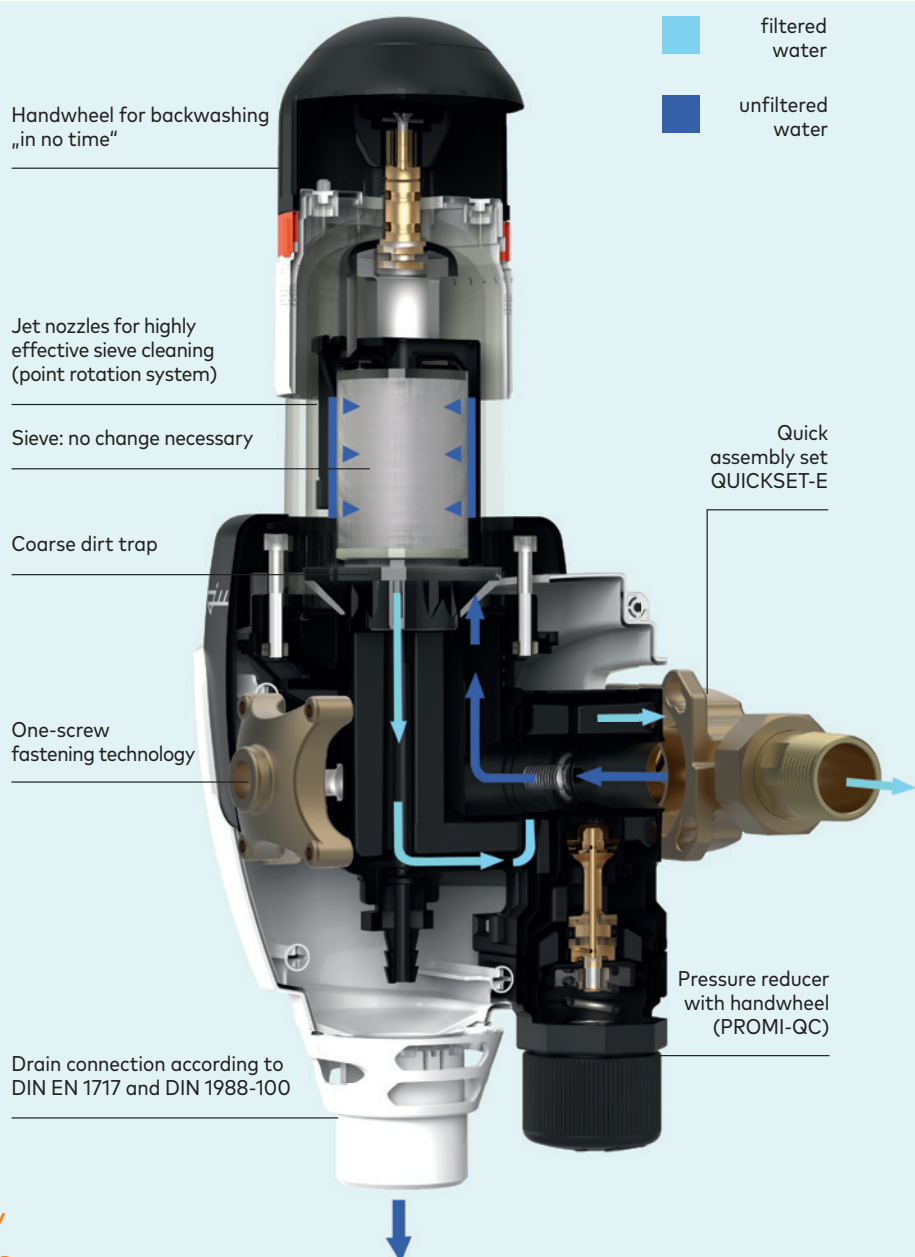
Best cleaning with the point-rotation system

JUDO invented the backwashing process. And perfected it: With the filters of the JUDO Germ Protection Class, jet nozzles vacuum the sieve surface point by point using filtered water. At the same time, they clean the sight glass. Dirt is clearly visible in the stainless steel sieve insert and can be easily removed. This is unrivalled - and particularly hygienic. Because where there is no dirt, there is also no place for bacteria to live. Backwashing takes place without interrupting the water supply.



Mounted in a flash: the single-screw technique with concealed screw ($\frac{3}{4}$ " – $1\frac{1}{4}$ ").

The filter screen is cleaned point by point by several rotating jet nozzles.





TAKE PRECAUTIONS

The ECO-SAFE is the ideal complement to the JUDO PROFI and PROMI backwash protection filters and domestic water stations ($\frac{3}{4}$ " to $1\frac{1}{4}$ "). It electronically monitors the water supply 24 hours a day. In the event of a pipe burst, the device shuts off the water flow and prevents expensive damages. In addition, it also detects leaking taps and creeping water losses.

Advantages of the JUDO ECO-SAFE:

- ✓ Detects leaks in single-family houses
- ✓ Protects against water damage consequences
- ✓ Stops water flow in the event of a burst pipe
- ✓ Can be individually adapted to consumption habits
- ✓ Saves water, provides security and reduces costs
- ✓ Emergency open function according to DIN 3553
- ✓ Open-close hand button
- ✓ 3-stage holiday mode
- ✓ Simple, quick installation
- ✓ Can be retrofitted at any time to already installed units of the PROFI and PROMI series
- ✓ Best quality

Prevent damage

Did you know?: in Germany alone, tap water damages amount to over 1.5 billion euros annually. The costs of unnoticed water loss due to leaking taps must be added to that. Insurance experts advise: The water installation in the house should be protected. With the JUDO ECO-SAFE, you are always on the safe side.

Quick and easy installation

ECO-SAFE is simply installed between JQE rotary flange and PROFI-QC, PROFIMAT-QC, PROMI-QC or PROMIMAT-QC in nominal sizes $\frac{3}{4}$ " – $1\frac{1}{4}$ ". With the patented JUDO QUICKSET-E built-in rotary flange, this can be done in no time at all.



The ZVSHK quality mark provides guidance and safety for the plumbing and HVAC trade. With the "Certified Manufacturer – Quality, Safety, Service" mark, ZVSHK uses a transparent procedure to certify manufacturers that provide the best possible support for the operational processes of the plumbing and HVAC specialist; through high product quality, extensive service offers and research and development investment.



ISO 9001 quality management standard is, nationally and internationally, the most widespread and most important standard in quality management. With ISO 9001 certification, our quality management system meets the high requirements and is continuously developed further on the basis of these requirements.

TECHNICAL DATA

PROFI-QC Backwash Protective Filter and PROFIMAT-QC Automatic Backwash Protective Filter - according to DIN 19628 and DIN EN 13443-1, for water up to 30 °C

Model	JPF-QC	JPF-QC	JPF-QC	JPF-QC A	JPF-QC A	JPF-QC A
Pipe connection inch	¾"	1"	1¼"	¾"	1"	1¼"
Nominal flow m³/h*	4,1 (6,7)	4,7 (7,6)	5,3 (8,5)	4,1 (6,7)	4,7 (7,6)	5,3 (8,5)
Mesh µm/mm	100/0,10	100/0,10	100/0,10	100/0,10	100/0,10	100/0,10
Dimensions mm						
A	180	195	230	180	195	230
B	193	193	193	222	222	222
C	391	391	391	391	391	391
D	145	145	145	152	152	152
E	219	219	224	221	221	226
E (ATP)	-	-	-	259	259	264
F	145	145	150	145	145	150
F (ATP)	-	-	-	183	183	188
G Ø	50	50	50	50	50	50
G1 Ø	14	14	14	15	15	15

Order no.	8010218	8010219	8010220	-	-	-
Order no. T**	-	-	-	8020605	8020606	8020607
Order no. TP***	-	-	-	8020608	8020609	8020610

* according to DIN EN 13443-1 with clean filter at 0.2 (0.5) bar pressure loss. Specialist advice is required for service water and heavily polluted water! For larger dimensions, up to DN 200, see separate brochure.

** T control = time-controlled

*** TP control = time and pressure controlled

PROMI-QC Domestic Water Station and PROMIMAT-QC Automatic Domestic Water Station according to DIN 19628 and DIN EN 13443-1, pressure reducer according to DIN EN 1567, backflow preventer to DIN EN 13959, for water up to 30 °C

Model	JPM-QC	JPM-QC	JPM-QC	JPM-QC A	JPM-QC A	JPM-QC A
Pipe connection inch	¾"	1"	1¼"	¾"	1"	1¼"
Nominal flow m³/h*	2,3	3,6	5,8	2,3	3,6	5,8
Mesh µm/mm	100/0,10	100/0,10	100/0,10	100/0,10	100/0,10	100/0,10
Dimensions mm						
A	180	195	230	180	195	230
B	222	222	222	222	222	222
C	290	290	290	391	391	391
D	152	152	152	152	152	152
E	220	220	225	221	221	226
F	145	145	150	145	145	150
G Ø	50	50	50	50	50	50
G1 Ø	14	14	14	15	15	15

Order no.	8165030	8165031	8165032	-	-	-
Order no. T**	-	-	-	8167575	8167576	8167577

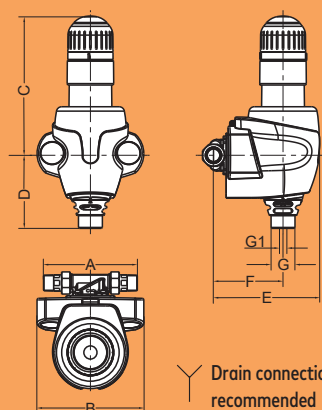
* according to DIN EN 13443-1 with clean filter at 0.2 (0.5) bar pressure loss. Specialist advice is required for service water and heavily polluted water! For larger dimensions, up to DN 200, see separate brochure.

** T control = time-controlled

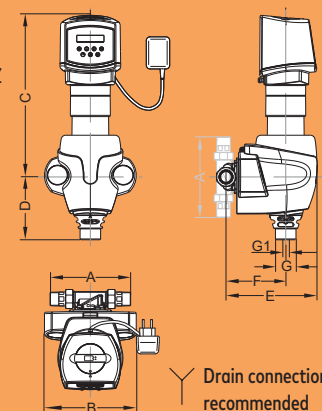
ECO-SAFE leakage protection

Model	JES
Dimensions mm (W x H x D)	169 x 98 x 115
Electrical connection V/Hz/W	230/50/max. 3
Order no. (scope of delivery without filter and connection piece JQE)	8140010

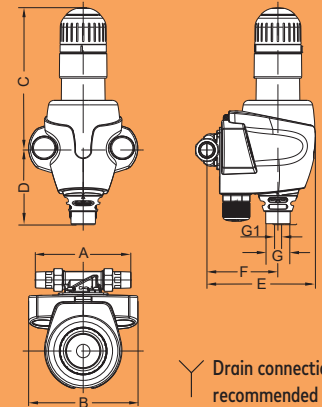
PROFI-QC
¾" - 1¼"



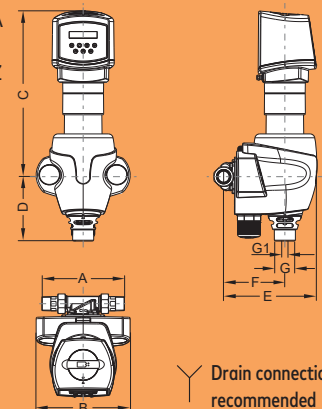
PROFI-QC-A
¾" - 1¼"
230 V/50 HZ



PROMI-QC
¾" - 1¼"



PROMI-QC-A
¾" - 1¼"
230 V/50 HZ



JUDO WATER TREATMENT. A NAME YOU CAN TRUST.
SINCE 1936.



JUDO Wasseraufbereitung GmbH
P.O. Box 380 · D-71351 Winnenden
Germany
phone +49 (0)7195 692 - 0
fax +49 (0)7195 692 - 110
e-mail: info@judo.eu · www.judo.eu