

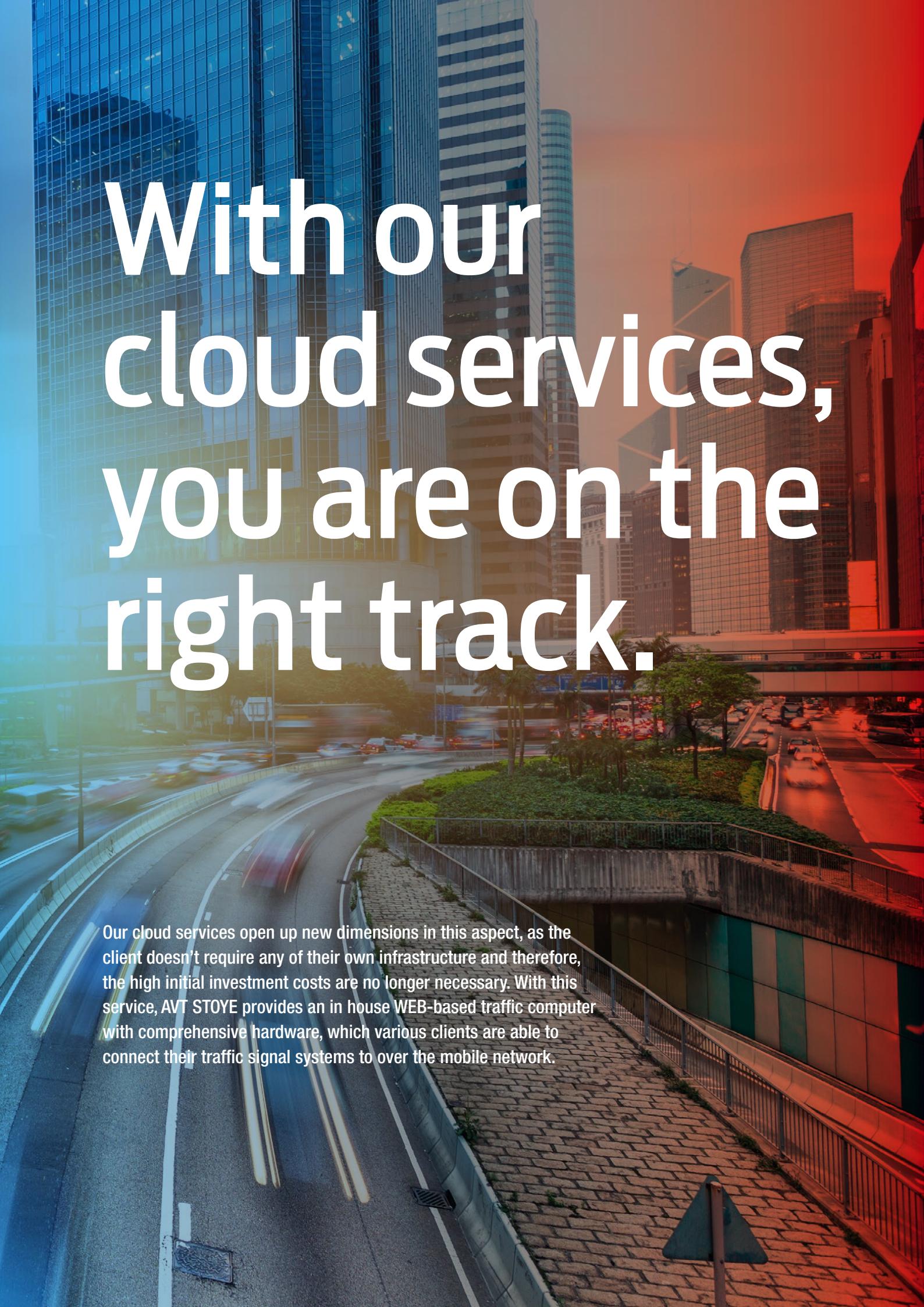
cloud services

Intelligent and efficient solutions for
WEB-based traffic technology



Intelligent, WEB-based solutions for better efficiency.

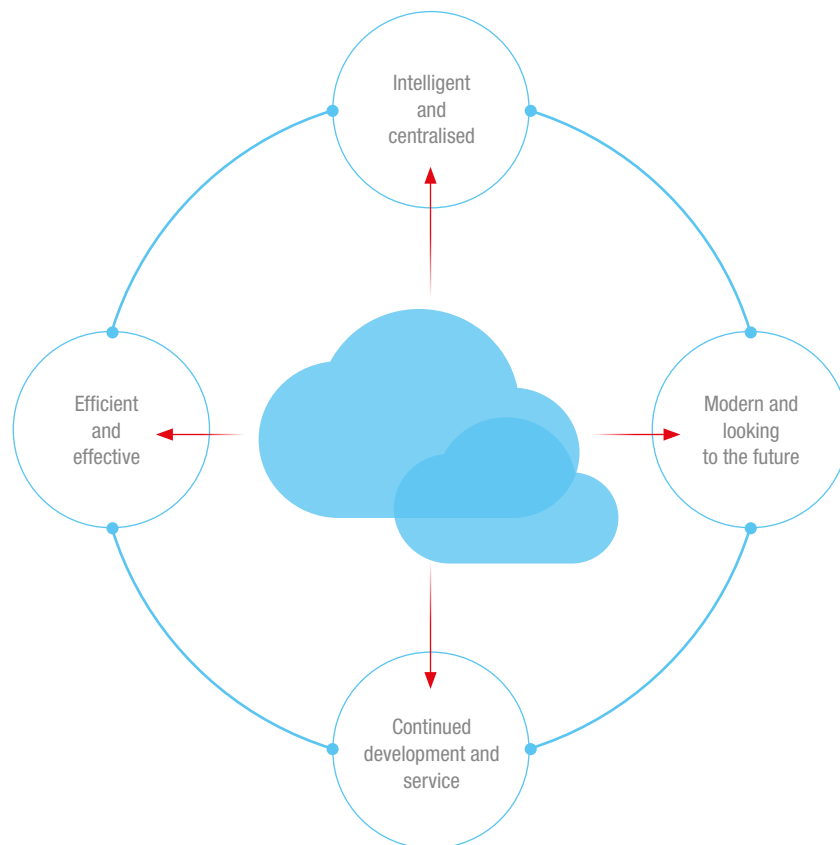
To be able to respond to the growing volume of traffic in multiple cities and communities and keep up with the increasing traffic demands at the same time, the use of a traffic control system often makes sense. However, the purchase of a classic traffic control system is quite often not possible due to the high investment and follow up costs. Tailor-made solutions that can easily be expanded as required.



With our cloud services, you are on the right track.

Our cloud services open up new dimensions in this aspect, as the client doesn't require any of their own infrastructure and therefore, the high initial investment costs are no longer necessary. With this service, AVT STOYE provides an in house WEB-based traffic computer with comprehensive hardware, which various clients are able to connect their traffic signal systems to over the mobile network.

Efficient and versatile: **PENTAttraffic® cloud services**

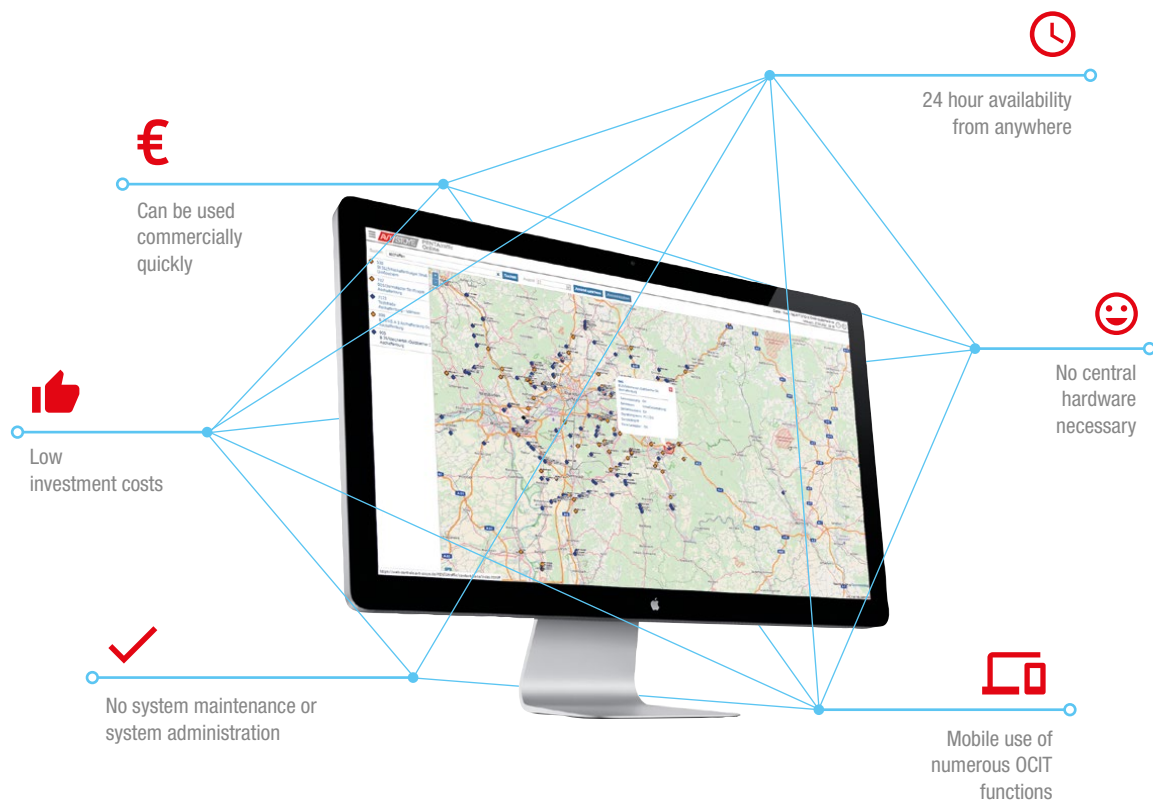


Efficient solutions for the multifaceted demands of modern traffic control systems

Looking to the future since 1999

PENTAttraffic is a system we are continually developing and as an innovative traffic control system with cutting-edge cloud services, meets the demands of modern traffic control centres for centralised, intelligent and effective solutions.

One control system, many advantages: **PENTAttraffic® clover**

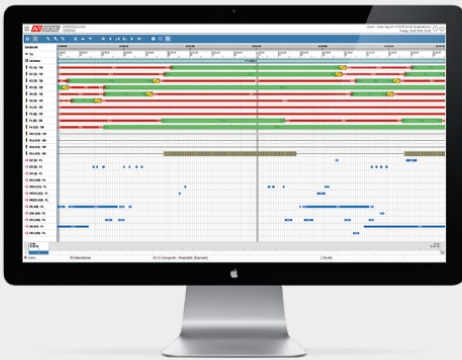


Whether Basic, Advanced or Expert –
You are on the right track with **PENTAttraffic® clover**

Rely on PENTAttraffic clover as well

PENTAttraffic clover provides **cloud services** and offers a comprehensive and manufacturer-independent traffic control system with many advantages over classic systems, be it in the basic version, the advanced version, and in the expert version as well.

Basic



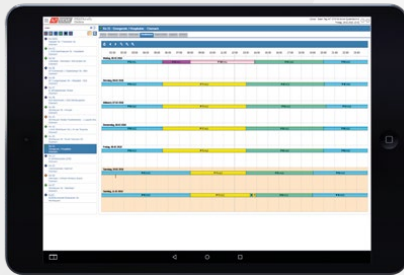
clover Basic version

The basic version of **PENTAttraffic clover** offers ideal features for when you need to focus on monitoring the operation of traffic signal systems.

Basic version features:

- › Operating message archive for more than ten years
- › TSS status visualization
- › Signal plan visualization (online and offline)
- › Automatic message forwarding
- › Integration of static layout plans
- › Raw data archive up to 30 days incl. count values and profiles

Advanced

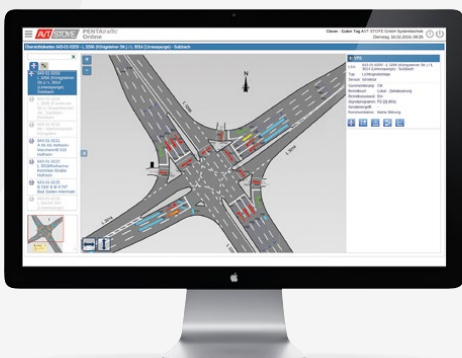


clover Advanced version

The advanced version of **PENTAttraffic clover** offers the following features on top of the basic version:

- › Dynamic overview plan
- › Raw data archive up to 60 days incl. count values and precision results
- › Graphic view of past switching operations

Expert



clover Expert version

The expert version of **PENTAttraffic clover** offers in addition to the advanced version customer-specific extensions like:

- › Traffic-dependent macro control
- › Central 12 month automatic routine
- › Dynamic intersection planning in real time
- › Webcam integration
- › Manual system switching possible
- › Raw data archive with unlimited storage space incl. count values and profiles

PENTAttraffic® clover



The WEB-based traffic control system is the link between innovative traffic engineering and the latest internet technology. Naturally VPN secured. The **PENTAttraffic clover** system concept meets the future demands of TSS operators, planners and engineering offices.



The advantages at a glance:

- › **Reliable & user-friendly**
- › **Flexible & future-proof**
- › **Available from anywhere via the internet**
- › **No telecommunications cable necessary**
- › **Can be connected to OCIT-capable traffic signal systems from various manufacturers**



System requirements for traffic signal systems:

- › **OCIT-Outstations version OCIT-O V1.1 or OCIT-O V2.0 interface**
- › **Mobile router (UMTS or LTE) with data card**

System requirements for the client:

- › **Internet-capable end device with web browser**
- › **Available internet connection**

PENTAttraffic® cloud services are used by:

- › **Federal Office for Roading NRW Regional Branches**
 - Gummersbach, Meschede, Mönchengladbach, Münsterland, Lower Rhine, Rhein-Berg, Ruhr, Sauerland-Hochstift, South Westphalia, Ville-Eifel
- › **Federal Office for Mobility Rheinland-Pfalz**
 - Diez
- › **Hesse mobile – Road and traffic management**
 - Bad Arolsen, Bensheim, Darmstadt, Dillenburg, Eschwege, Frankfurt, Fulda, Gelnhausen, Kassel, Schotten, Wiesbaden
- › **Federal building authorities in Baden-Württemberg**
 - Department of Ortenaukreis
- › **Building authorities in Bavaria**
 - Administrative district Ortenaukreis, State Building Dept Nuremberg, State Building Dept Aschaffenburg
- › **Building authorities in Saarland**
 - Federal Office for Roading Saarland
- › **Federal building authorities in Thuringia**
 - Highway Department of South West Thuringia
- › **Cities throughout Germany**
 - Bad Hersfeld, Bad Homburg, Bergisch Gladbach, Dietzenbach, Eisenach, Eschborn, Eschweiler, Frankenberg, Fulda, Fürth, Gießen, Gründau, Heusenstamm, Hilden, Limburg, Lippstadt, Obertshausen, Offenburg

Hanau Branch

Dieselstraße 8
63456 Hanau
Tel.: +49 6181 6902 62
Fax: +49 6181 6902 72
info.hanau@avt-stoye.de

Bad Salzungen Support Centre

Am Langen Streif 3
36433 Bad Salzungen
Tel.: +49 3695 6008 16
Fax: +49 3695 6008 17

Cologne Branch

Longericher Straße 177
50739 Köln
Tel.: +49 221 2616 0
Fax: +49 221 2616 599
info.koeln@avt-stoye.de

Stuttgart Support Centre

Am Kirchberg 23
73734 Esslingen-Berkheim
Tel.: +49 711 305 3293 0
Fax: +49 711 305 3293 1

Munich Branch

Lerchenstraße 14 (Haus 3b)
80995 München
Tel.: +49 89 35 72 78 0
Fax: +49 89 35 72 78 11
info.muenchen@avt-stoye.de



**Do you have any questions or would you like personal advice?
We look forward to hearing from you.**