



FLOOR SCRUBBERS MACHINE

SC5100



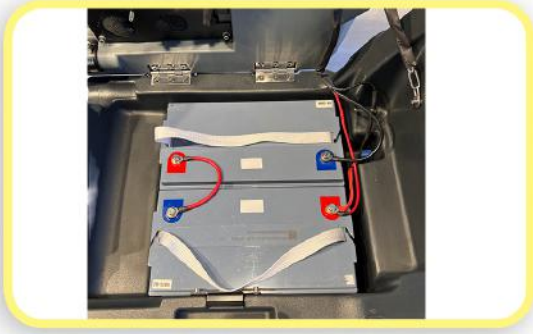
Motor Voltage	24 v (DC)
Brush Diameter	5100 mm
Suction Widht	760 mm
Brush Motor Power	550 w
Brush Driving Motor	None
Batteries	2x (12V / 100Ah)
Clean Water Tank Capacity	47lt
Recovery Tank Capacity	50lt
Cleaning Capacity	2000 m2/H
Brush Speed	150 rpm
Weight	135 kg
Box Size	123cm x 61cm x 120cm



Designed as a handle operated by a touch sensor, it automatically stops when you remove your hands from the handle. The brush and switch buttons are manual, extending its lifespan.



The squeegee, made from tough aluminum, stands out for its exceptional durability and shatterproof qualities. Its robust structure ensures a long-lasting and sturdy performance.



The machine's powerful batteries are designed for prolonged and reliable usage. High-capacity batteries enhance work efficiency, providing uninterrupted performance.



The machine is equipped with a 50-liter dirty water tank, providing big water capacity for effective cleaning and making it ergonomic for extended use.



The brush and pad holder are specially designed for ease of use and effective cleaning. With a quick-change design, they enhance efficiency and adapt to various cleaning needs.



The presence of a clean water filter is a crucial feature that extends the machine's lifespan. By filtering clean water, it preserves the machine's performance, ensuring long-lasting use.



The machine is equipped with a water valve, allowing you to adjust the water flow to the brush.



The charging feature is equipped with an on-board charger system, providing users with a convenient charging option for easy recharging.