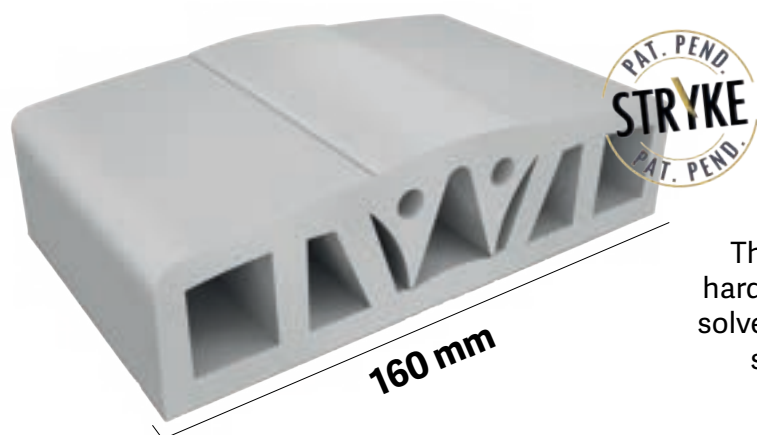


Modular Boat Fender Profile - Simplified Installation, Maximum Protection

STRYKE®

The Next Generation of Hull Protection



BEHIND THE IDEA

The boating market is growing but limited by outdated, hard-to-install, and inefficient protection systems. Stryke solves these issues with a patented, modular, and flexible solution that combines performance with aesthetics.

IDENTIFIED ISSUES

Traditional fender profiles use visible screws that damage the hull and compromise aesthetics. They are difficult to transport, install, and maintain, offering limited protection and poor performance against repeated impacts. Their rigid mounting systems and unsuitable materials make them incompatible with curved or complex hulls, increasing the risk of hull damage.

PATENTED SOLUTION

STRYKE® is a modular boat fender system composed of two elements: A flexible PVC base and a shock-absorbing insert. The base can be installed using marine-grade adhesive and a reduced number of non-structural screws. The insert reinforces the adhesion of the base.



KEY FEATURES

Interlocking system
Insert reinforces the base's adhesion
100% marine-grade PVC material,
optimal hardness (83 Shore A)

Resistant to weather
and temperature fluctuations

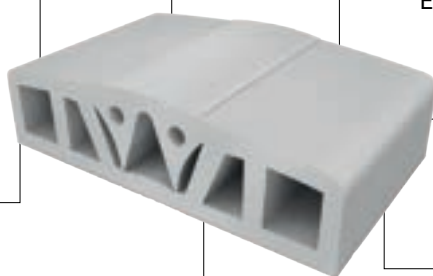
160 mm wide
For superior protection

Seamless design
Integrated look with no visible screws
and no cuts

Flexible and rollable
Easy transport and installation

Hybrid installation
adhesive + non-invasive screws

Adaptable to curved hulls
A strong competitive advantage



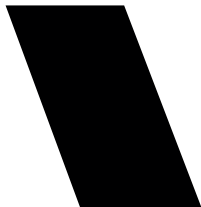
COMPETITIVE ADVANTAGES

| FEATURE | TRADITIONAL FENDER PROFILE | STRYKE® |
|-----------------|----------------------------|-----------------------------------|
| Fixing System | Screws only | Adhesive + Non-Invasive Screws |
| Aesthetics | Visible Screws | Invisible, Integrated Profile |
| Installation | Complex | Quick, rollable, modular |
| Adaptability | Limited | High, even on curved hulls |
| Protection Area | Limited, localized | Larger shock-absorbing surface |
| Maintenance | Difficult | Easy, two-piece replacement |
| Hull Impact | High (Drilling Required) | Low (Adhesive + Alignment System) |

Designed for excellence, this solution serves the most demanding sectors of the marine industry, from luxury yachts and tenders to OEM boatbuilders, refit specialists, and charter fleets. It also delivers reliable protection for light-duty workboats and coastal defense vessels.



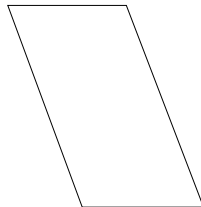
COLORS AND MATERIALS



RAL 9004



RAL 7047



RAL 9010

FLEXIBLE PVC BASE

Material: 100% marine-grade PVC

Hardness: 83 Shore A

Properties: Flexible, rollable, weather- and temperature-resistant

SHOCK-ABSORBING INSERT

Material: High-resilience polymer (integrated with PVC system)

Function: Reinforces adhesion, dissipates impact forces

INSTALLATION COMPONENTS

Marine-Grade Adhesive (primary installation method)

Optional Non-Structural Screws (secondary, non-invasive fixing)



Stryke sets a new standard in marine fender profiles, combining functionality, aesthetics, and ease of use in a patented system that meets the needs of the most demanding shipyards and boat owners.