

November 2025



HEFRING  
MARINE

**IMAS®** | Intelligent Marine  
Assistance System



# IMAS® gives operators the tools to modernize their fleet operations, monitoring and management

Hefring Marine IMAS leverages AI, sensor data, and edge computing to provide real time decision-support to optimize vessel operations to enhance comfort and safety, fuel efficiency and vessel sustainability, while centralizing all vessel data to simplify monitoring, analytics and reporting.



Up to: | **20%** lower fuel use and emissions  
| **87%** lower wave impact exposure  
| **20%** insurance premium savings

[Link to video](#)

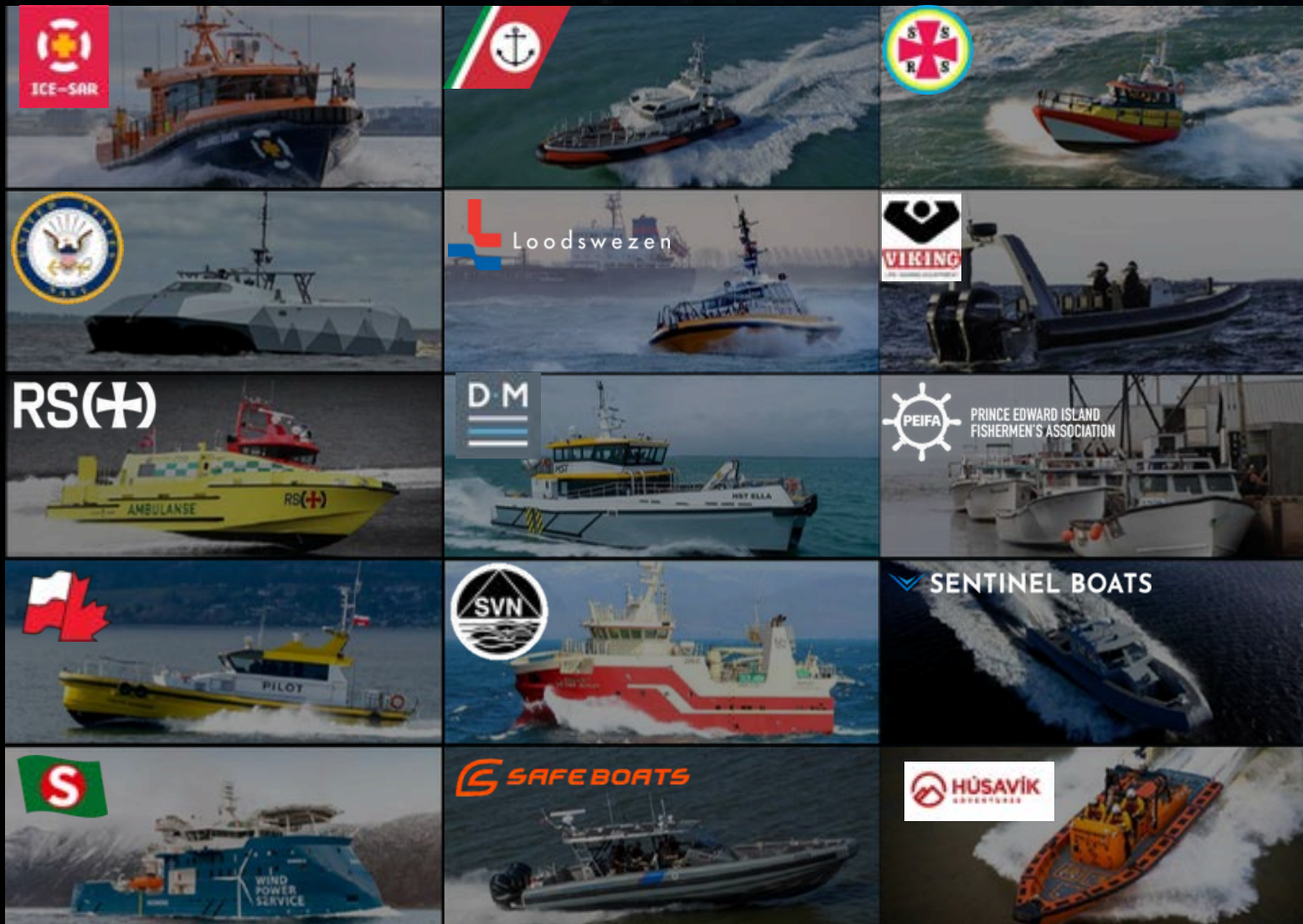
Patented internationally



## Why do our customers choose IMAS?

- | Real-time operating decisions driven by AI
- | Designed to change behavior and deliver insights
- | A multi-purpose platform for total fleet data capture
- | Integration options with third-party systems
- | Proven survivability in harsh environments
- | Easy installation and minimal training

# IMAS® is in use by many professional customers, who have validated the solution in the harshest conditions



~98,000  
hours logged

~1,010,000  
nautical miles sailed

~4,500  
trips monthly

Rescue, defense, crew  
transfer, law enforcement  
fisheries, pilotage, diving.

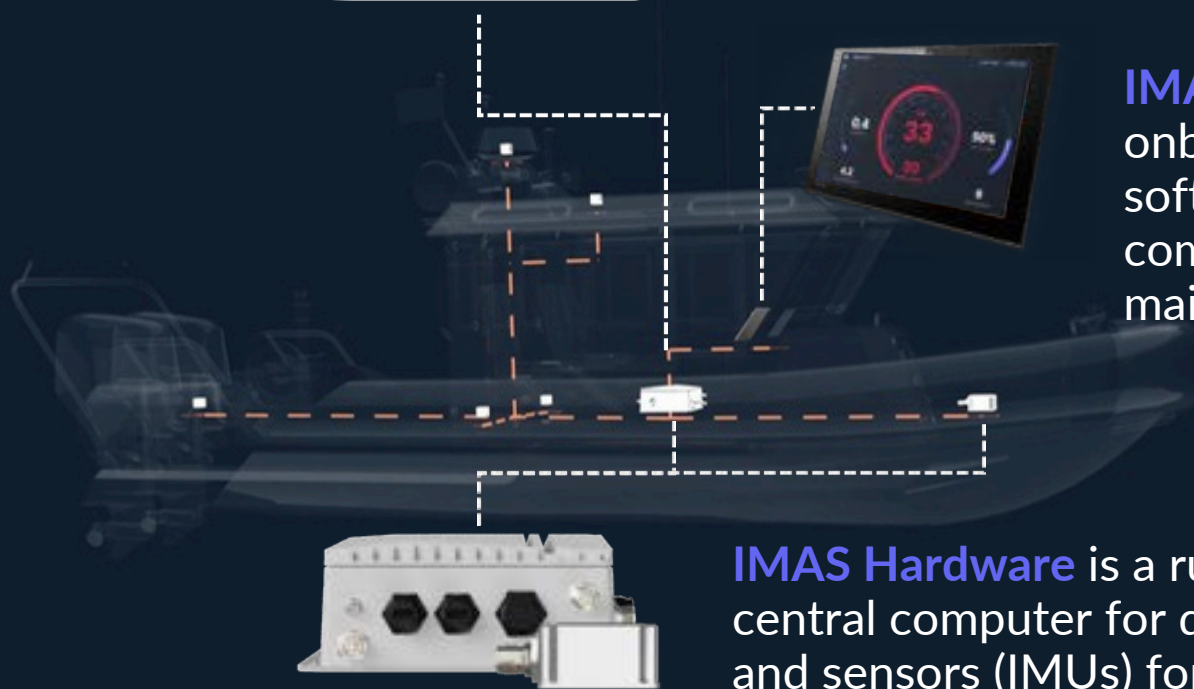
# IMAS® is a data collection and analysis platform for marine vessels, built to thrive in the toughest environments



**IMAS Console** is a cloud platform for monitoring and analytics, providing operators and managers with advanced tools for efficient vessel fleet management. Available as desktop and mobile applications.



**IMAS Cloud** for data collection. IMAS is also available fully offline.



**IMAS Helm**, onboard AI-driven software, with UI compatible with all main display brands.

**IMAS Hardware** is a rugged, MIL-STD central computer for data processing, and sensors (IMUs) for motion capture and sea condition analysis.

# IMAS® Safety Speed predicts conditions and vessel motions for adaptive speed control to ensure onboard safety

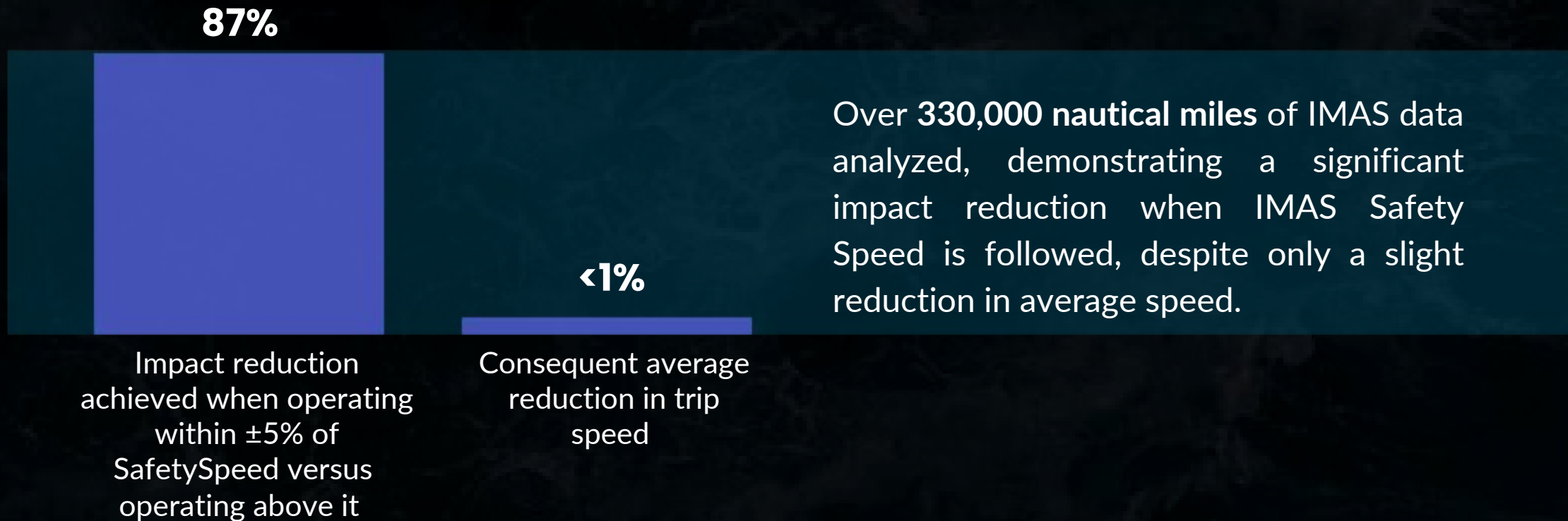


Reduce damage and incident risks with **IMAS® Helm Safety Speed**, providing real-time condition-adaptive speed limit predictions from on-board condition-adaptive sensory feedback.

1. Real-time impact & shock exposure
2. Highest recorded trip impact
3. Number of impacts above threshold
4. Actual vessel speed, Speed over ground
5. SafetySpeed, to limit impact exposure
6. Trip safety score

“Improving the survivability”

# Effects of **IMAS®** Helm SafetySpeed, verified over **330,000** nautical miles of collected data



While **IMAS**® can monitor and predict wave impacts, it will soon be capable of alerting for impacts with physical objects



Upcoming feature for collision and grounding warnings and alerts, notifying operator or observer if vessel has an impact with a physical object.

“Improving the survivability”

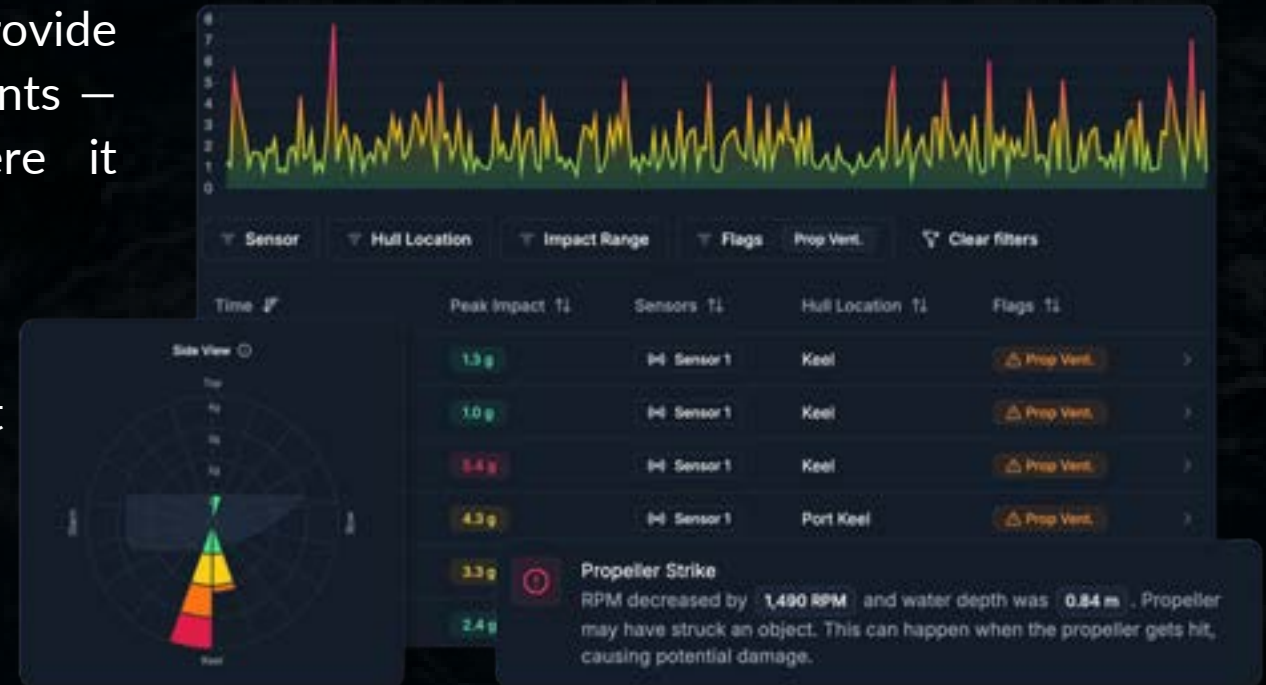
# With IMAS® every trip can be explored with a visual Impact Report

Impact Reports in the IMAS Console provide unprecedented insight into vessel impact events — helping to identify what happened, where it occurred, and how to prevent it in the future.



The view allows:

- | Determining the hull location of each impact
- | Seeing the direction of each impact
- | Analyzing the magnitude, duration, and location of each event



Impact Reports were built to uncover risks, improve operational safety, and provide deeper visibility into fleet performance.

“Improving operational safety”

# IMAS® EcoSpeed learns your vessel's operational profile and identifies its optimum efficiency range in real time



IMAS® Helm Eco Speed, can optimize fuel use or available range, dynamically predicting a prevailing fuel curve, speed & RPM, continuously adapting to each vessel and conditions & continuously improving.

1. Actual per nmi fuel consumption
2. Surplus fuel savings vs. vessel average
3. Avg. consumption and actual fuel flow
4. Target fuel rate, set by fleet manager
5. Predicted fuel consumption curve
6. EcoSpeed/RPM, fuel efficiency ranges

“Improving fuel consumption and range”

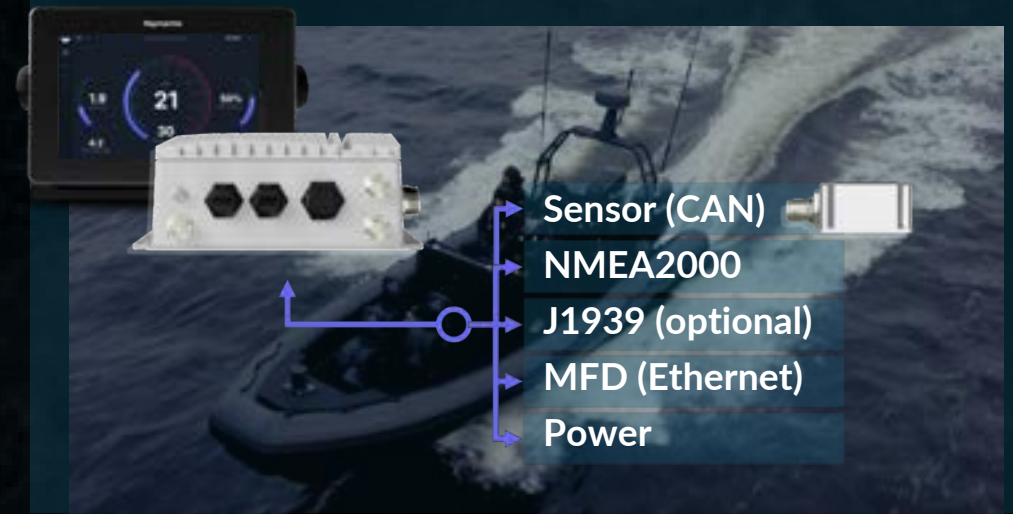
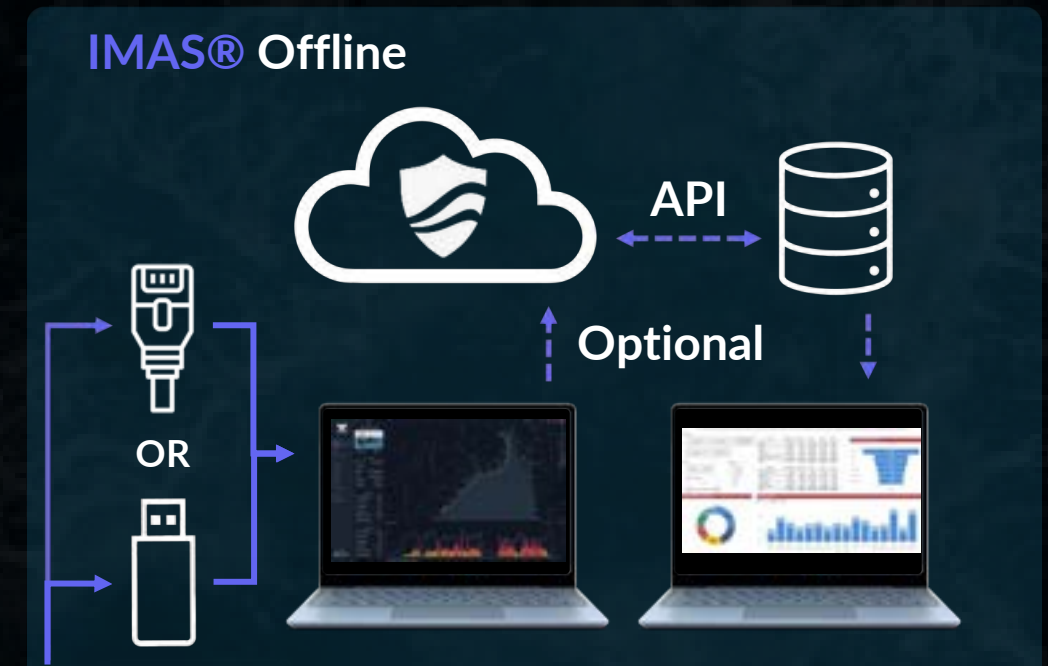
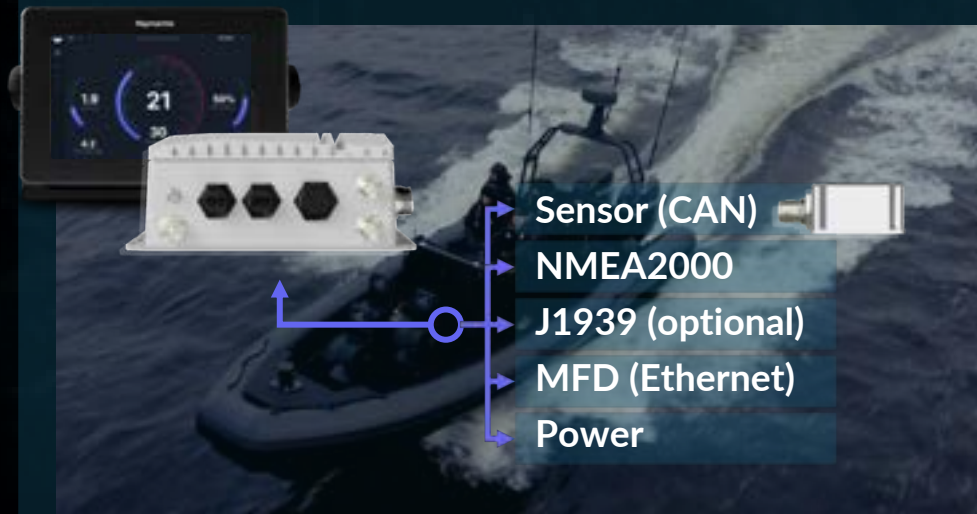
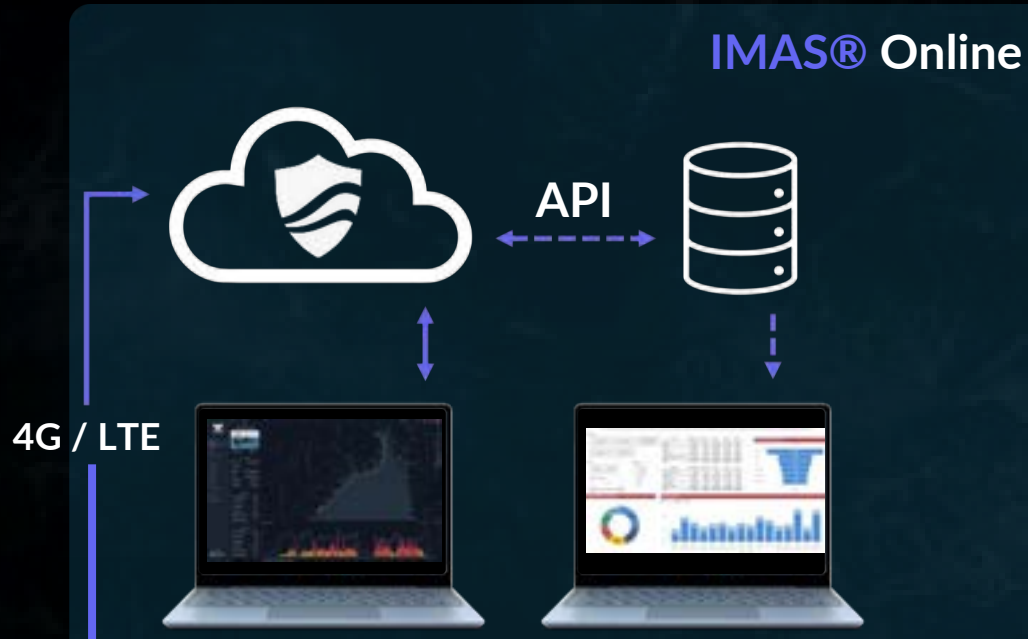
# IMAS® Console provides powerful tools to monitor and analyse a fleet, helping operators stay informed at all times



**IMAS Console** is a vessel fleet monitoring and analytics platform, designed to empower vessel owners, operators, and managers with advanced tools for efficient vessel fleet management, real-time monitoring, and data-driven decisions.

- | Live Fleet Monitoring and Tracking
- | Historical Records for Inspections
- | Asset and Equipment Monitoring
- | Fleet Information Dashboard
- | Automated Trip Logs & Analytics
- | Operator and Vessel Profiles and Scores
- | Virtual Fleet Manager and Alerts
- | *Upcoming: Route planner and optimizer*

# IMAS® System variant options: Online and Offline



TRUSTED BY THE  
TOUGHEST PROFESSIONALS



HEFRING  
MARINE

In Norse mythology, the sea giant Ægir and the sea goddess Rán had nine daughters, each representing a type of wave. Some daughters' names persist in modern Icelandic as both female names and wave terms. One daughter embodied the 'rising wave,' the sea's dynamic power. Her name was **HEFRING**.

| [hefringmarine.com](https://hefringmarine.com)