



# MegaTron XT

## TOUCH SCREEN CONTROLLER

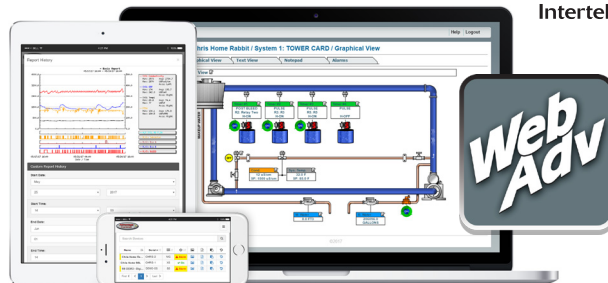
The MegaTron XT offers the widest range of features combined with WebAdvantage remote communications making it an exceptional choice for commercial and industrial water treatment systems.

## MICROPROCESSOR CONTROL OF:

Conductivity, pH, ORP, Chemical & Biocide Feed, Service Reports, 4-20mA In & Outs

## KEY FEATURES

- Customizable LCD Display
- On Board History Graphs
- Single System Capability
- Simple Touch Screen Menu
- Internet Communications Included
- Up to 16 mA Inputs
- Customizable Notepad
- Multi-Level Security Code
- Wi-Fi Capable
- Non-Volatile Memory
- E-mail Alarm Capable
- Modbus and BACnet Options



## PRODUCT OVERVIEW

The MegaTron XT touchscreen controller is the latest innovation in our highly acclaimed MegaTron product line.

Units can be configured to control a wide range of digital and analog inputs. Advanced relay logic and customization lets you configure a unit to meet your specific system needs.

XT touch units can control a single tower, boiler, wastewater or other industrial application and provide web based communications and reporting with WebAdvantage.

## Build a Model..... X T C X P R F E - A 1 X A A B

### Step 1 system card functions

Must select one from each in order.

Conductivity Only list one	
B	Boiler with BE-32C
C	Tower with TE-4A
G	Low range with AL-4ASS
X	None - 5 digital inputs only
Misc Conductivity Only list one	
1	General range with DI-4A
Q	General range with TE-4A
X	None
pH Only list one	
P	Single set point with TPE-21
Q	Dual set point with TPE-21
X	None
ORP Only list one	
R	Standard with TOE-21
X	None
Feed Timers Only list one	
F	Five selectable
X	None
Flow Assembly Only list one	
E	Float style, PVC
4	Input only
X	None

POWER	RELAYS	COMM	mA IN/OUT	ACC
-------	--------	------	-----------	-----

### Power 100-240 VAC except G Only list one

A	UL, CSA, CE labeling with USA cords
B	USA power cord and pigtails
C	3/8" liquid tights and 1/2" conduit glands
D	UL, CSA, CE labeling with glands only
E	UL, CSA, CE, glands, type F power cord
F	UL, CSA, CE, glands, type I power cord
G	24 VDC incoming power with glands

### Relays (2.5 amp each) Only list one

1	(5) line powered
2	(5) no power connected
3	(5) configured for dry contact
X	No control relays

### Communications Only list one

1	Dual network, Modbus TCP/IP read/write
2	Dual network, BACnet TCP/IP read/write
3	Dual network with Modbus 485 read only
4	Dual network with BACnet 485 read only
X	WebAdvantage communications only

### Step 2 whole unit options

Must select from each in order. Only Accessories can have more than 1 selection.

### mA Signals Only list one

A	(4) mA inputs
B	(4) mA outputs
C	(4) mA inputs and outputs
D	(8) mA inputs
E	(8) mA inputs and (4) outputs
F	(8) mA inputs and (8) outputs
G	(8) mA outputs
H	(12) mA inputs
J	(12) mA inputs and (4) outputs
K	(16) mA inputs
X	no inputs or outputs

### Accessories List all that are desired

A	24 VDC for external signals
B	Black display cover
C	Clear display cover
D	(5) additional flowmeter inputs
E	Wifi module for WebAdv comms

Tower / general range conductivity sensors include a temperature reading. Additional sensor types are available. Consult dealer for additional options.

## Specifications

<b>Electrical Input</b>	95-240 VAC, 50/60 Hz	<b>Relative Humidity</b>	0 to 100%
<b>Relay Outputs</b>	Individually fused and 2.5 amps. Dry contact limited to 2.5mA at 28 VDC.	<b>Conductivity Control</b>	uS/cm, mS/Cm, PPM scales up to 50,000 depending on sensor selection
<b>Display</b>	6.875" Diagonal LCD Touch Screen	<b>pH Control</b>	0-14 with single or optional dual set point
<b>Digital Inputs</b>	Inputs have 10K $\Omega$ pullup to 3.3 VDC from open collector open drain output.	<b>ORP Control</b>	+/- 1,000 mV, 2nd set point timer linked
<b>Flow Totalizing Inputs</b>	10K $\Omega$ pullup to 5 VDC max rate 2.5 KHz from open collector open drain output	<b>Accuracy</b>	+/- 1% of scale
<b>mA Inputs</b>	Optical isolation, 250 $\Omega$ / 5 VDC @ 20 mA. Loop voltage to not exceed 30 VDC.	<b>Selectable Feed Timers</b>	Water pulse, Percent, Post, Limit, Recycle, and 28 day with remember 1 for loss flow.
<b>mA Outputs</b>	Non-isolated 12 VDC max load = 400 $\Omega$ . Isolated ext 24 VDC max load = 800 $\Omega$ .	<b>mA Input Control</b>	Customizable to desired range and scale
<b>Ethernet</b>	DHCP or static capable with 10/100 WiFi 802.11 (b/g/n)	<b>mA Output</b>	Proportional with second input conditioning
<b>Approvals</b>	UL, CSA, CE (pending)	Tower probes supplied in 3/4" quick release PVC tees. pH and ORP probes bodies are CPVC.	
<b>Enclosure</b>	NEMA 4X style polycarbonate	<b>TE-4A</b>	150 psi (10.3 bar), 140°F (60°C) max
<b>Ambient Temp</b>	0° to 125°F (-17° to 52°C)	<b>TPE-21</b>	100 psi (6.8 bar), 140°F (60°C) max
<b>Shipping Weight</b>	Approximately 10 lbs. (4.536 kg)	<b>TOE-21</b>	100 psi (6.8 bar), 140°F (60°C) max
<b>Dimensions</b>	11" (27.94cm) W x 11.75" (29.84cm) T	<b>FS-OC (flow switch)</b>	140 psi (9.6 bar), 140°F (60°C) max, clear
		<b>AL-4ASS</b>	100 psi (6.8 bar), 212°F (100°C) max
		<b>BE-32C</b>	250 psi @ 400°F, SS/PEEK with 1" cross



4700 Harold-Abitz Dr  
Muskogee, OK 74403

www.advantagecontrols.com

918-686-6211 phone  
918-686-6212 fax

2025-02