

nautech



# Real-time vessel monitoring with extensive connectivity

We design unique  
Marine Communication systems



# We design unique Marine Communication

We are Nautech. A group of enthusiasts and engineers who deliver Integrated Solutions for our Customers, to cover the complete portfolio from identified user needs to installed on-demand systems: We offer a set of own-designed and developed embedded Networking, Control and IOT Products. Besides, we perform customized professional engineering services according to the customer's requirements, including Network Design and System Integration into the vessel's NMEA, Communication and Power Networks.

Qualification of our employees:

- Chamber of Engineers membership
- Planning and Expert Authorization of Wired and Wireless Networks
- Safety Engineering Design and Implementation Authorization
- Responsible Technical Manager Authority
- Electrical Safety Inspector



## What we offer

Nautech focuses on maritime applications, marine and vessel related ICT technologies, including navigation, control, monitoring and “smart-boat” solutions, targeting the pleasure yachting. The employees are highly qualified engineers, in addition they also hold telecommunications and safety engineering design qualifications. Nautech is to perform unique on-demand System Integration and Support Services with our products.

- Remote Supervision (Sensors and Camera)
- IP & NMEA Communication Gateway and Router
- Skipper Support with real-time sensor data processing & MFD integration
- Cloud Data processing
- Digital Switch functionalities

# Smart yachting

## Meet our product

**Nautech Core** is an embedded NMEA-compatible, IP68-protected standalone module. Contains Internal Battery, GNSS Receiver, Galvanically Isolated NMEA2000 and NMEA0183 communication, with onboard 4G Internet Modem, Integrated Compass, and Power measurement sensors. It features Remote Supervision, NMEA Sensor Integration, Configurable Alarm System, IP Camera Integration, Realtime Dashboard and MFD Integration, Hystorical Database (cloud & local) for NMEA-metrics, and Digital Switch Control.

Coming soon: available from 2025



## Highlights

Vessel Monitoring, Remote Control

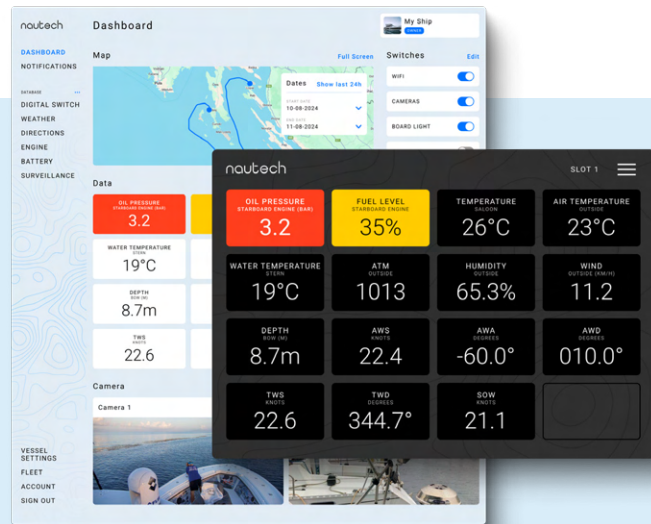
**Anytime & anywhere:** Live Data, Built in Broadband Internet, Digital Switching, Analog Sensor Input, Charter/ Fleet Support

**Cross Platform:** Mobile PC Tablet, On-board MFD, Smart TV, Chartplotter Integration, Cloud Platform

**Plug&Play:** Multi-vendor connectivity, NMEA0183 & NMEA2000 integration, NMEA OneNet ready

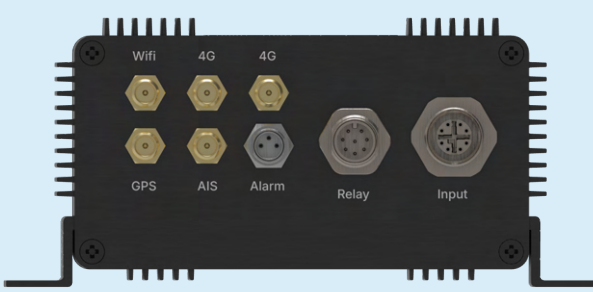
**Reliable:** Durable Design, Waterproof, Integration Services, Online Support

**Safety:** Enhanced Security, Real-time, Alert system, Historical data, Position tracking



## Vessel Management, Anywhere

Our IOT module comes with a cloud management system which is a comprehensive online platform designed to streamline vessel management and enhance operational efficiency. Managing your fleet has never been easier—whether you're in port or at sea..



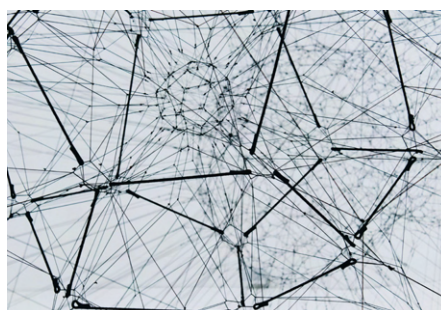
# Our Services

We deliver an End2End Solution for our Customers, to cover the complete portfolio from identified user needs to installed on-demand systems.



## Design of unique Marine Communication, Control and Power Networks

We deliver Integrated Solutions for our Customers, to cover the complete portfolio from identified user needs to installed on-demand systems: We offer a set of own-designed and developed embedded Networking, Control and IOT Products.



## System Integration

We offer the process of combining different subsystems or components into a single, unified system to ensure they work together seamlessly. It involves aligning software, hardware, and communication systems to enable efficient data flow and coordination, improving overall functionality and performance. System integration helps streamline operations, reduce complexity, and enhance collaboration across various technologies or platforms.



## Managed Services & Professional Consulting

We perform customized professional engineering services according to the customer's requirements, including Network Design and System Integration into the vessel's NMEA, Communication and Power Networks.

## Contact us

Do you have any questions? We are here to help. Whether you need more information about our services, assistance with your project, or want to explore customized solutions, feel free to reach out.

email **[sales@nautech.cloud](mailto:sales@nautech.cloud)**  
phone **+39 334 1420282**

nautech

