

A vertical branch with green leaves and small buds against a light blue background. The branch enters from the bottom right and extends towards the top left. The leaves are oval-shaped and have a slightly waxy texture. The buds are small and round.

01

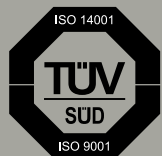
think:water
Profine®

Household

Being sure of the water in our home is a fundamental aspect of everyday life. We use it to drink, cook, wash, and it is essential for our bodies to function. Needless to say, water is a serious matter, and we take it seriously.

Italian manufacturer

A fundamental aspect of everyday life is to be sure of the water in our home. We use it to drink, cook, wash, and it is essential for our bodies to function. Needless to say, water is a real matter, and we take it seriously.



tw produces with
management system
quality ISO 9001: 2015 and
environment ISO 14001: 2015
certified by TÜV SÜD



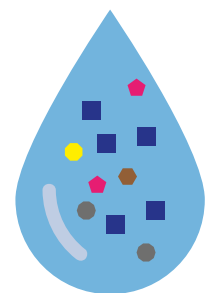
tw produces according
to MOCA food compliance



Not all water is the same



Water is a living element and is subject to changes. It varies depending on the territory and sometimes even throughout the day. Choosing the right treatment means getting the most out of this vital resource.



Hard water

Hard water contains high levels of calcium and magnesium.



- ZERO
- MINI:BLUE

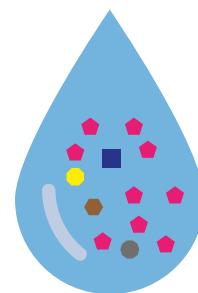


Soft water

Soft water contains small amounts of chlorine, calcium, magnesium and carbonates.



- UNO
- BLUE
- SILVER
- GOLD



Contaminated water

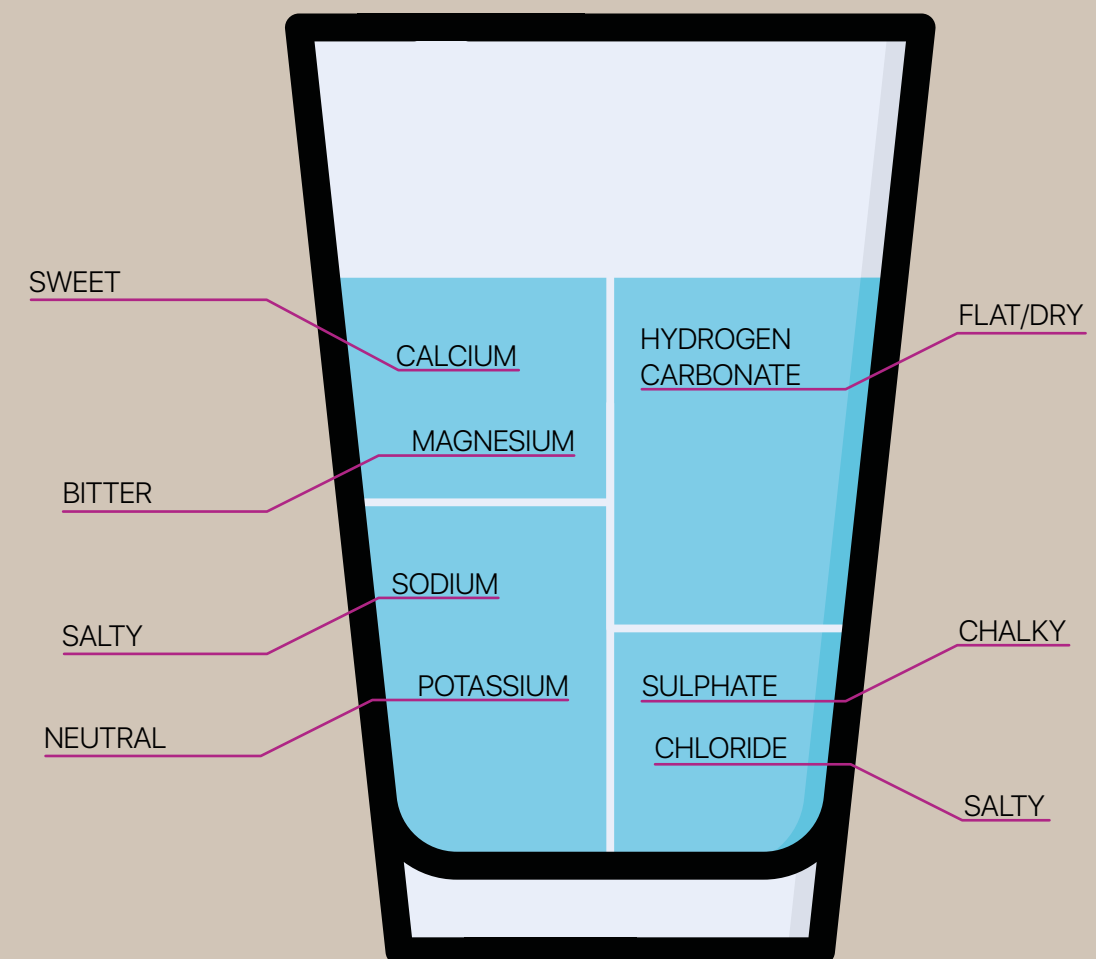
Contaminated water contains substances that are hazardous to health.



- NITRATES
- ARSENIC
- PFAS
- ZERO

Improve the taste

Every element dissolved in the water releases its own particular characteristic, soft, bitter, salty, and so forth. Finding the right blend of these substances creates the perfect recipe to obtain the best possible product, to enhance the aromas and to make your drinks tastier. After all, water is the main ingredient of any food.



Water treatment overview

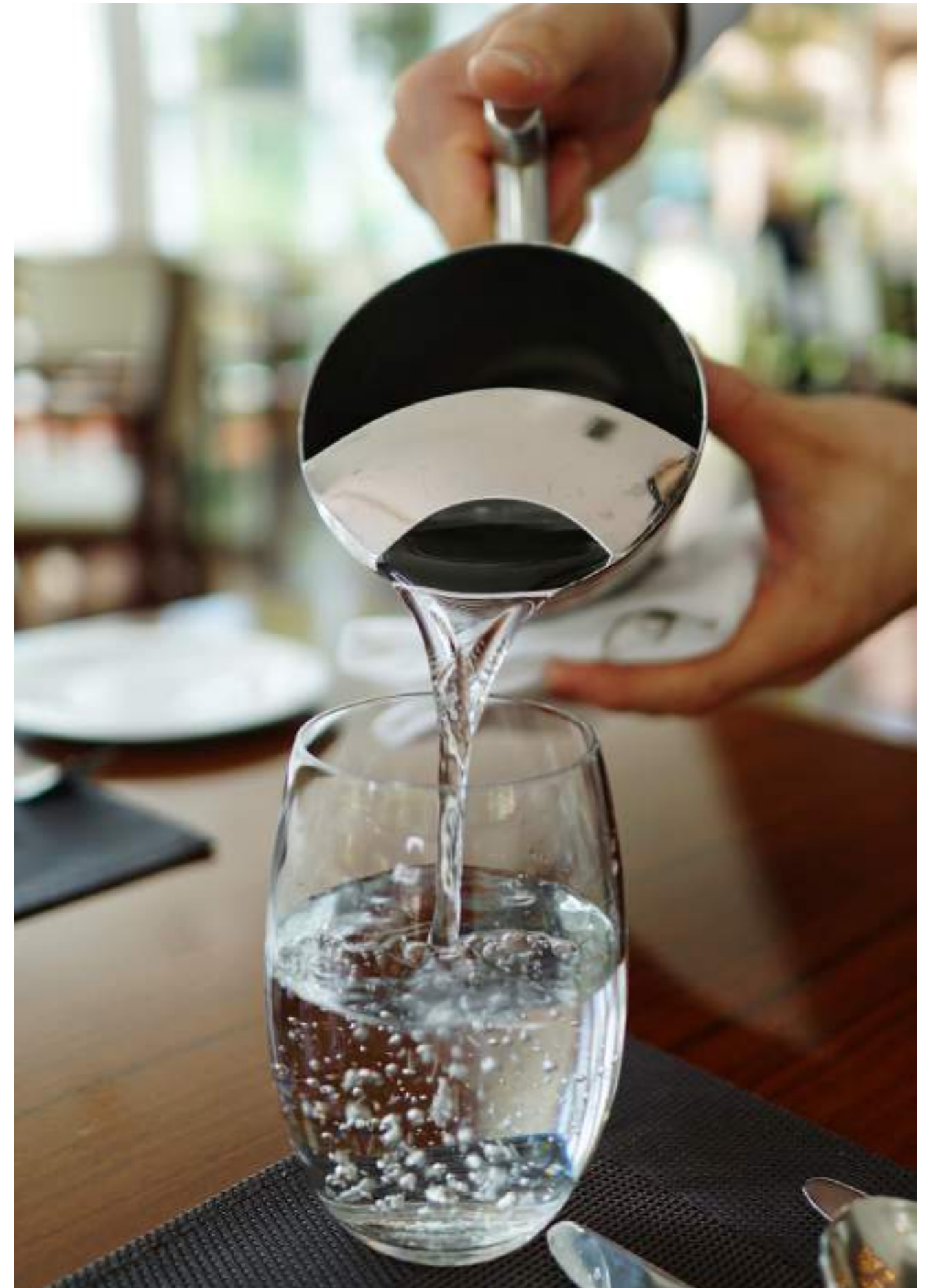
When people think about the water that comes from the mains, they normally consider it a fixed product that cannot be altered. Actually, the quality of water changes not only from area to area, and sometimes even from street to street, but also within the same day.

Water is part of nature, it is life, and then brings with it the traces of all the elements it meets along its path. It is understandable therefore that some of the substances it contains are not always desirable, good, healthy, and/or useful.

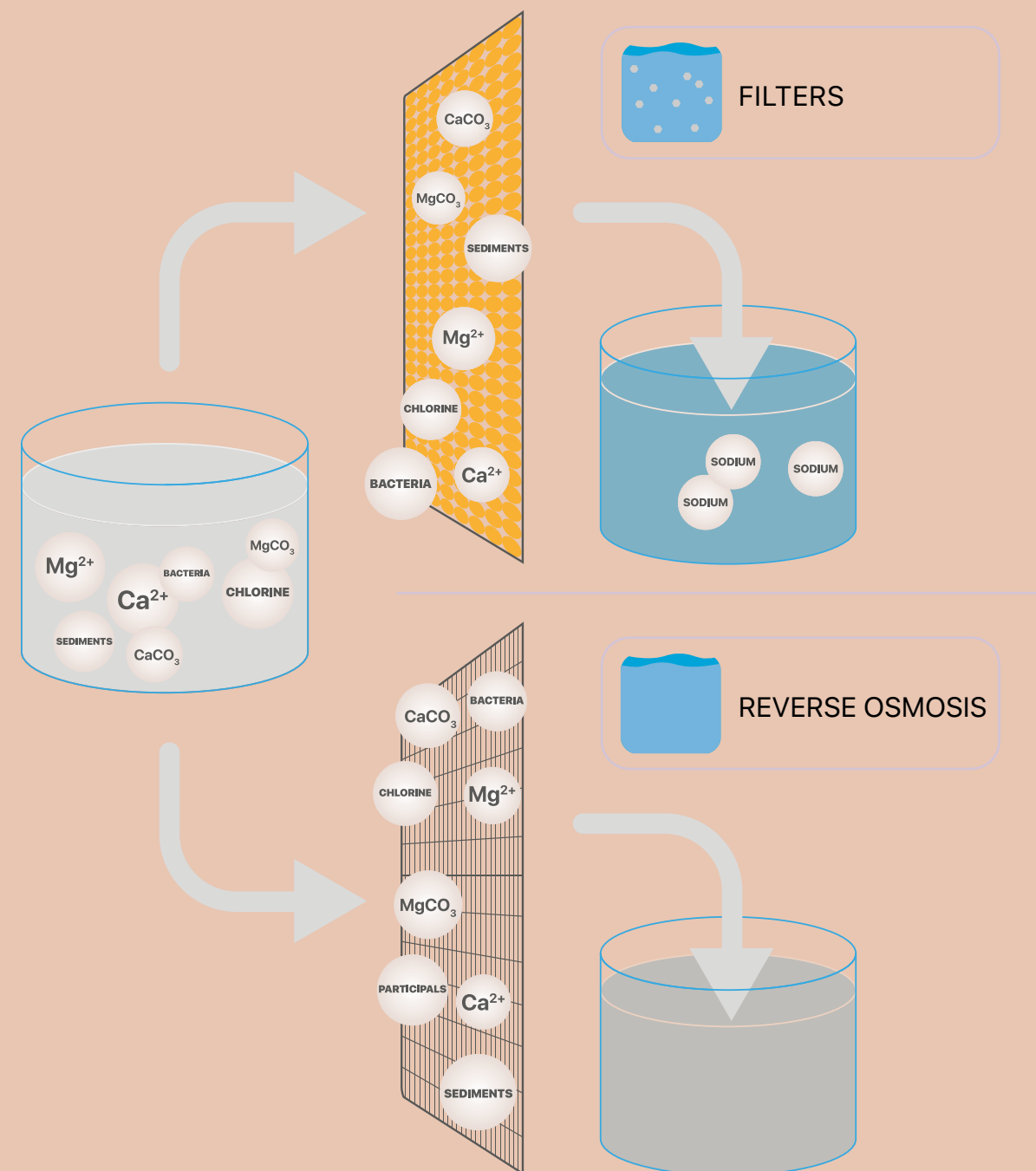
For example:

- a high concentration of dissolved minerals,
- the presence of chlorine as a disinfectant (in the mains supply),
- the presence of solid particles, such as microplastics,
- the presence of bacteria,
- a high concentration of limestone,

make the water from our mains supply less than desirable and effectively useful.



Water treatment methods



tw

Water treatment occurs mainly in two ways.

Filtration

Filters allow the mains water supply to be purified of all those substances that alter its taste and smell, or which compromise its drinkability. To control its taste and smell, activated carbon is used, such as the Carbon Block Profine®, which intercepts any particulate matter and chlorine thanks to its properties of absorption. On the other hand, for toxic substances such as pfas, nitrates and arsenic, specially designed filters are used.

Reverse osmosis

Thanks to the very high degree of filtration that characterises reverse osmosis machines, it is possible to obtain water with very high quality characteristics. As the water passes through one or more membranes, it is purified not only of the elements determining its hardness, but also of all the contaminating substances causing unpleasant odours and tastes, for example.



tw

**Along its path from the source
or aquifer to our taps,
the water collects numerous
substances, some of which
compromise its quality.
Domestic filtration
protects us against any
unpleasant surprises.**



01

The safety of what we drink.

Nowadays, having safe water in the home is essential, but unfortunately not a given. Even the mains water, however much more controlled than bottled water, can still be contaminated by pollutants. Domestic filtration allows us to use the water with peace of mind!

02

Water that tastes like water.

To make it drinkable, disinfectants such as chlorine and its derivatives are added to the water, which, although making it safe on one hand, alter its taste and smell on the other. Domestic filtration allows us to eliminate these substances and enjoy the water alone!

03

Respect for our planet.

It is now common knowledge that plastics are slowly suffocating the earth. We need to get past the idea, unfounded among other things, that bottled water is better than tap water. Drinking water is one of the most controlled and heavily regulated products, it is up to us to simply make it more pleasant. Domestic filtration improves its flavour and helps our planet!

04

Convenience.

Investing in a water treatment system might seem expensive, but in the long run, the benefits far outweigh the costs. The convenience of having good water on tap, the safety of using a controlled product, and not least of all, the knowledge that you're doing something useful for the planet. All aspects that make beverage water treatment the choice of the future, for the future!



Products

Investing in a water treatment system might seem expensive, but in the long run, the benefits far outweigh the costs. The convenience of having good water on tap, the safety of using a controlled product, and not least of all, the knowledge that you're doing something useful for the planet. All aspects making beverage water treatment the choice of the future, for the future!



tw

- 🥛 **GOLD** __p. 16
- 🥛 **SILVER** __p. 18
- 🥛 **BLUE** __p. 20
- 🥛 **RED** __p. 22
- 🥛 **ARSENIC** __p. 24
- 🥛 **NITRATES** __p. 26
- 🥛 **PFAS** __p. 28
- 🥛 **ZERO PROFESSIONAL** __p. 30
- 🥛 **ROCK** __p. 32
- 🥛 **UNO** __p. 34
- 🥛 **ZERO** __p. 36
- 🥛 **MINI:BLUE** __p. 38

Profine® Gold

Home kit with bacteriostatic
action and ultrafiltration.



microfiltered
water

Profine® GOLD eliminates unwanted odors and flavors, reduces chlorine and has a nominal filtration degree of 0.1 microns. Disposable filter with very high filtration degree that maximizes the advantages of the Profine® Carbon Block system combined with an ultrafiltration stage capable of preventing the passage of more than 99.9999% of bacteria. Composite structure filter suitable for drinking water treatment in compliance with DM 25/2012. The kit is equipped with everything needed for installation, including the tap and small parts.

- Bacteriostatic action
- Microfiltration at 0.1 microns
- It reduces chlorine, chlorocompounds and THM
- It eliminates unwanted odours and flavours
- It removes suspended material, pesticides, herbicides and microplastics

CODE	DESCRIPTION	FLOW RATE	CAPACITY*
Y21406B-AXM	Gold Small	3 L/min	7.000 L
Y21405B-AXK	Gold Medium	5 L/min	10.000 L
Y21404B-AXH	Gold Large	7 L/min	15.000 L
Y21501B-B21	Kit Gold Medium	5 L/min	10.000 L

* The flow rates may also vary significantly depending on the quality of the inlet water.

Operating pressure	Min. 2 - Max. 6 bar (0.2 - 0.6 Mpa)
Temperature	Min. 4 - Max. 30°C (40 - 86 °F)



Profine® Silver

Domestic microfiltration kit
with bacteriostatic action.



Profine® Silver eliminates unwanted odours and flavours, reduces chlorine, and has a nominal degree of filtration of 0.5 microns. It also has a bacteriostatic action thanks to Profine® Carbon Block. Composite cartridge suitable for the treatment of drinking water in accordance with DM 25/2012.

- Bacteriostatic action
- Microfiltration at 0.5 microns
- It reduces chlorine, chloro compounds and THM
- It eliminates unwanted odours and flavours
- It ensures extended autonomy
- It removes suspended material, pesticides, herbicides and microplastics

CODE	DESCRIPTION	FLOW RATE	CAPACITY*
Y21409B-AXW	Silver Small	3 L/min	15.000 L
Y21408B-AXT	Silver Medium	5 L/min	24.000 L
Y21407B-AXQ	Silver Large	7 L/min	45.000 L
Y214504B-B24	Kit Silver Medium	5 L/min	24.000 L

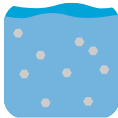
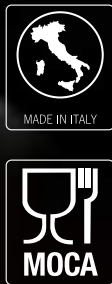
* The flow rates may also vary significantly depending on the quality of the inlet water.

Operating pressure	Min. 2 - Max. 6 bar (0.2 - 0.6 Mpa)
Temperature	Min. 4 - Max. 30°C (40 - 86 °F)



Profine® Blue

Drinking water
dechlorination and clarification.



microfiltered
water

Profine® Blue, thanks to the Profine® Carbon Block technology, reduces and removes cloudiness present in the water, as well as chlorine and any tastes and smells. Nominal filtration degree 5 µm. Complies with DM 25/2012.

- It eliminates unwanted odours and flavours
- It reduces chlorine
- It reduces the cloudiness of the water
- It guarantees extended autonomy
- It reduces the presence of any organic macromolecules

CODE	DESCRIPTION	FLOW RATE	CAPACITY*
Y21409B-AXW	BLUE Small	3 L/min	15.000 L
Y21408B-AXT	BLUE Medium	5 L/min	24.000 L
Y21407B-AXQ	BLUE Large	7 L/min	45.000 L

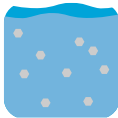
* The flow rates may also vary significantly depending on the quality of the inlet water.

Operating pressure	Min. 2 - Max. 6 bar (0.2 - 0.6 Mpa)
Temperature	Min. 4 - Max. 30°C (40 - 86 °F)



Profine® Red

Filter for water treatment.



pre-treated
water

Profine® RED reduces the turbidity present in the water and suspended particles with 5 micron filtration. It is a sediment cartridge for the clarification of drinking water, to be used for technological systems. Quick connection cartridge with extruded polypropylene filtration. If the cartridge is used in equipment for the treatment of water intended for human consumption, this equipment must comply with DM 25/2012.

CODE	DESCRIPTION	FLOW RATE	CAPACITY*
Y21412B-AYE	Red Small	3 L/min	max Δp 2,5 bar
Y21411B-AYC	Red Medium	5 L/min	max Δp 2,5 bar
Y21410B-AYA	Red Large	7 L/min	max Δp 2,5 bar

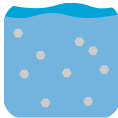
* The flow rates may also vary significantly depending on the quality of the inlet water.

Operating pressure	Min. 2 - Max. 6 bar (0.2 - 0.6 Mpa)
Temperature	Min. 4 - Max. 30°C (40 - 86 °F)



Profine® Arsenic

Domestic filtration kit
which reduces arsenic.



microfiltered
water

Profine® Arsenic reduces the concentration of arsenic. Selective arsenic resin and final stage of 0.5 µm filtration with Profine® Carbon Block technology for bacteriostatic action. To use with arsenic concentrations up to 50 µg/l.

- It eliminates unwanted odours and flavours and reduces chlorine
- It guarantees bacteriostatic action
- It reduces the concentration of arsenic

CODE	DESCRIPTION	FLOW RATE*	CAPACITY*
Y21518B-B27	Kit Arsenic Small Profine®	1 L/min	10.000 L
Y21430B-AZ6	Arsenic Small Profine®	1 L/min	10.000 L
Y21429B-AZ4	Arsenic Medium Profine®	1,5 L/min	15.000 L
Y21428B-AZ3	Arsenic Large Profine®	2 L/min	20.000 L
PBBRP200-B3W	BIG 2.0 Arsenic Profine®	2 L/min	22.000 L
PBBRP300-B3X	BIG 3.0 Arsenic Profine®	2 L/min	33.000 L
PBBRP450-B3Y	BIG 4.5 Arsenic Profine®	2 L/min	49.500 L
PBBRP600-B3Z	BIG 6.0 Arsenic Profine®	2 L/min	66.000 L

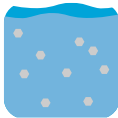
* The capacities may vary according to the French degrees (* f) from the organoleptic properties and the flow rate of the incoming water.

Operating pressure	Min. 2 - Max. 6 bar (0.2 - 0.6 Mpa)
Temperature	Min. 4 - Max. 30°C (40 - 86 °F)



Profine® Nitrates

Domestic filtration kit
which reduces nitrates.



microfiltered
water

Profine® Nitrates reduces the concentration of nitrates. Selective nitrates resin and final stage of 0.5 µm filtration with Profine® Carbon Block technology for bacteriostatic action.
To use with nitrates concentrations up to 50 mg/l.

- It eliminates unwanted odours and flavours and reduces chlorine
- It guarantees bacteriostatic action
- It reduces the concentration of nitrates

CODE	DESCRIPTION	FLOW RATE*	CAPACITY*
Y21527B-B2C	Kit Nitrates Small Profine®	1 L/min	900 L
Y21443B-AZG	Nitrates Small Profine®	1 L/min	9000 L
Y21439B-AZE	Nitrates Medium Profine®	1,5 L/min	1.400 L
Y21438B-AZD	Nitrates Large Profine®	2,2 L/min	2.100 L

* The capacities may vary according to the French degrees (° f) from the organoleptic properties and the flow rate of the incoming water.

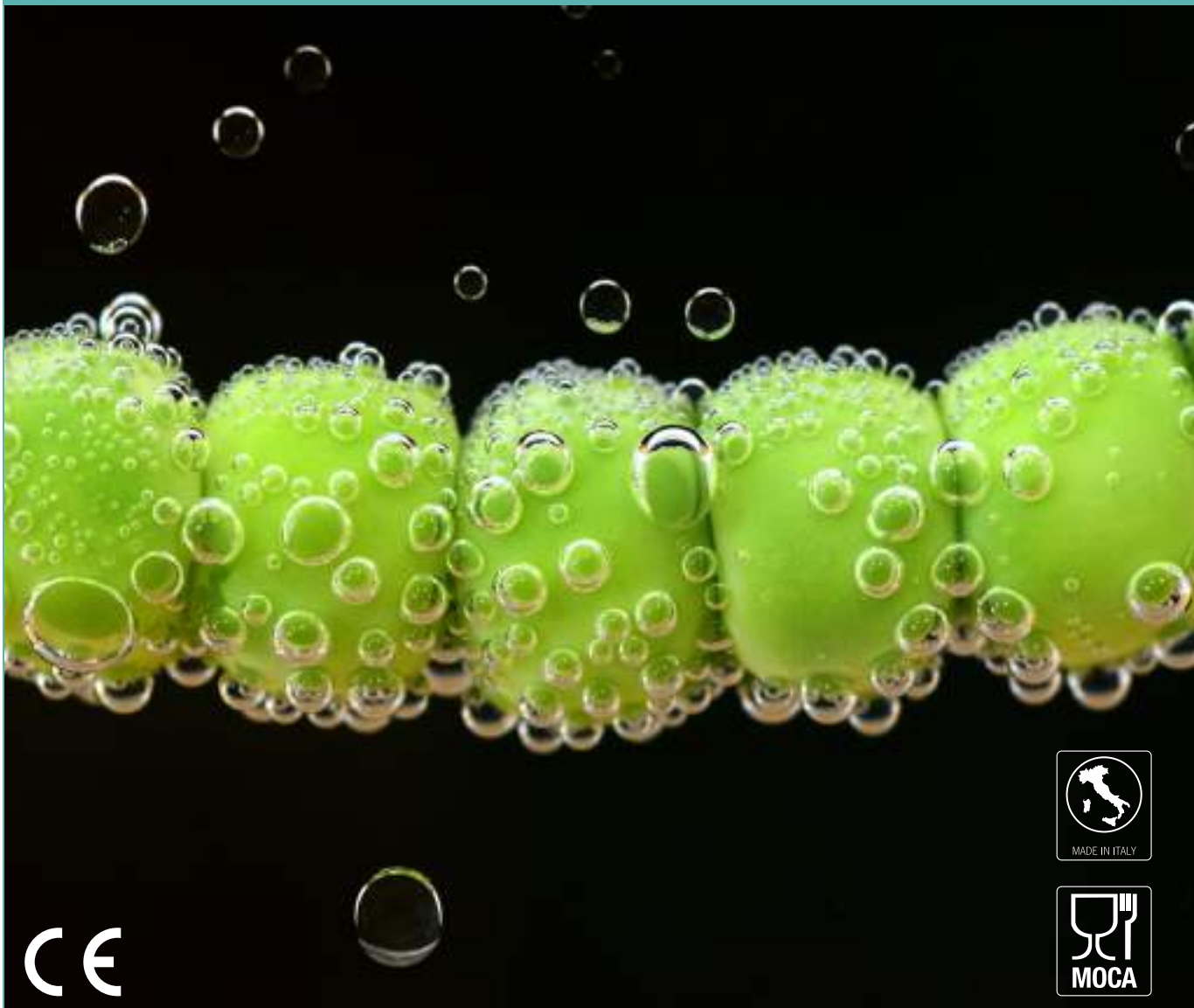
Operating pressure	Min. 2 - Max. 6 bar (0.2 - 0.6 Mpa)
Temperature	Min. 4 - Max. 30°C (40 - 86 °F)



PRODUCT
COMPLIANT
D.M. 174/2004

Profine® Pfas

Domestic filtration kit
which removes the Pfas.



microfiltered
water

Profine® PFAS removes unwanted odours and flavours, as well as Perfluoroalkylated substances (PFAS) Selective PFAS resin, final stage of 0.5 µm filtration with Profine® Carbon Block technology for bacterio-static action. To use with PFAS concentrations up to 500 ng/l.

- It eliminates unwanted odours and flavours and reduces chlorine
- It guarantees bacteriostatic action
- It reduces the concentration of PFAS

CODE	DESCRIPTION	FLOW RATE*	CAPACITY*
Y21488B-B1S	Kit Pfas Medium Profine®	2 L/min	11.000 L
Y21539B-B2M	Kit Pfas Medium Profine® with liter counter and without tap.	2 L/min	11.000 L
Y21486B-B1M	Pfas Medium Profine® **	2 L/min	-
Y21497B-B1X	Pfas Large Profine®	2 L/min	11.000 L
PBBPP200-B7Q	BIG 2.0 Pfas Profine®	2 L/min	11.000 L

* To be used for waters with Pfas concentrations lower than 500 ng / l. The exchange capacities may vary according to the Pfas concentrations of the incoming water and the flow rates.

** Can only be used for the replacement filter kit 2 pieces.

Operating pressure	Min. 2 - Max. 6 bar (0.2 - 0.6 Mpa)
Temperature	Min. 4 - Max. 30°C (40 - 86 °F)





Profine® Zero Professional Ultra-natural and super-filtering.



osmotic
water

A hyperfiltration incredibly in harmony with nature. Because This new system of reverse osmosis has been devised while thinking about the natural forces that move water. Without the use of a pump and electricity, Zero Professional provides 3 litres of finely osmotised water per minute. It Includes pre-treatment and post-treatment, mounting bracket and conductivity adjustment screw.

- High instantaneous flow rate
- Without requiring electrical energy
- Including active carbon and pre-treatment and post-treatment filters
- Integrated expansion tanks with patented functions
- Layout of the system that creates major savings in the water used
- Exclusive and compact design
- Integrated support bracket for horizontal and vertical mounting
- Conductivity adjustment screw

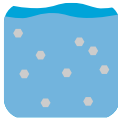
CODE	DESCRIPTION
OF80002000N-ALK	Profine® Zero Professional
Operating pressure	1,5 bar/6 bar 21.7 PSI/87 PSI
Temperature	Min. 4 - Max. 30°C (40 - 86 °F)
Hourly flow rate	24 l/h (4 bar)
Pre-Post filtration	Profine® Carbon Block 5 µm





Profine® Rock

Filter for water
re-mineralization.



remineralized
water

Profine® Rock re-mineralizes water. It can be used in many food applications (for example for the preparation of drinks) and as a post filter in reverse osmosis systems. It reduces sediments, increases the pH in water, bringing it back to basic range.

- remineralizing action
- bring ph back to basic range

CODE	DESCRIPTION	FLOW RATE*	CAPACITY*
Y21496B-B1W	Rock Mini Profine®	1.5 L/min	6.000 L
Y21495B-B1V	Rock Small Profine®	2 L/min	10.000 L
Y21490B-B1U	Rock Medium Profine®	3,7 L/min	16.000 L
Y21489B-B1T	Rock Large Profine®	5 L/min	25.000 L

* The capacities may vary according to the French degrees (° f) from the organoleptic properties and the flow rate of the incoming water.

Operating pressure	Min. 2 - Max. 6 bar (0.2 - 0.6 Mpa)
Temperature	Min. 4 - Max. 30°C (40 - 86 °F)





Profine® Uno

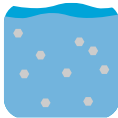
Homemade still water.



GOOD
DESIGN
award
2016



Green
Product Award
Selection 2016



microfiltered
water

Inside the sleek body, carbon block guarantees 0.5 microfiltration for up to 7.000 litres of clean, fresh, refined water. UNO is an antibacterial system, improved by the guaranteed bacteriostatic action. Under rigorous testing to simulate a family household context, no pollution, nor bacterial contamination were detected, even after long 'holiday' periods (tests performed at TIFQLAB). If you do not want to give up good water even on vacation, bring UNO with you!
Easy to install, you can screw it directly under any sink.

- it removes suspended material, bad odours and off-tastes, chlorine, any herbicides, pesticides and microplastics
- 0,5 µm microfiltration
- bacteriostatic action
- small size
- 7.000 l extended capacity
- easy installation
- cartridge check LED
- dedicated tap not required

CODE	DESCRIPTION	FLOW RATE*	CAPACITY*
Y21602B-B2S	Uno Profine®	3.5 L/min	7.000 L

* The capacities may vary according to the French degrees (° f) from the organoleptic properties and the flow rate of the inlet water.

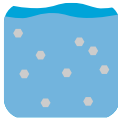
Operating pressure	1,5 bar (0.1 Mpa)
Temperature	Min. 4 - Max. 30°C (40 - 86 °F)





Profine® Zero

Your finest water
at home.



osmotic
water

ZERO is a patented osmosis system made in with a compact form shape, including It includes both pre-treatment and post-treatment with a bacteriostatic action capable of producing osmotic water with an instantaneous high flow rate. The exclusive design features housings spaces of disposable liters in an easily accessible ergonomic compartment for ordinary and extraordinary maintenance operations, with the total absence of traditional hydraulic connections for an integrated circuit.

- Faucet with filter change alarm (smart tap)
- High instantaneous flow
- No electricity required
- Quiet and compact

CODE	DESCRIPTION	FLOW RATE*
OF0002010W-ALP	Zero Profine®	3 L/min

* The capacities may vary according to the French degrees (° f) from the organoleptic properties and the flow rate of the inlet water.

Operating pressure	Min. 2 - Max. 6 bar (0.2 - 0.6 Mpa)
Temperature	Min. 5 - Max. 30°C (41 - 86 °F)





Profine® Mini:blue

Light water for the family.



osmotic
water

MINI:BLUE is a reverse osmosis system able to supply the finest water for the whole family. The frontal display of the electronic control unit allows the installation both horizontally and vertically. MINI:BLUE can be easily installed under the sink because it requires very small space for its connections.

MINI:BLUE in the display communicates:

- conductivity output in $\mu\text{S}/\text{cm}$,
- water volume supplied
- total operating hours pre-filter replacement notice
- alarm anti-flooding with block
- RO section flushing control

CODE	DESCRIPTION	FLOW RATE
O313101112B-AMG	Mini:blue Top 3M + display	90L/H
O312131122B-AMD	Mini:blue STD 2M + display	60L/H
O362121102B-AMJ	Mini:blue Basic 2M	60L/H

Operating pressure	1,5 bar/6 bar 21.7 PSI/87 PSI
Temperature	Min. 5 - Max. 30°C (41 - 86 °F)
Hourly flow rate	250 l/h
Pre-Post filtration	Profine® Carbon Block 5 μm

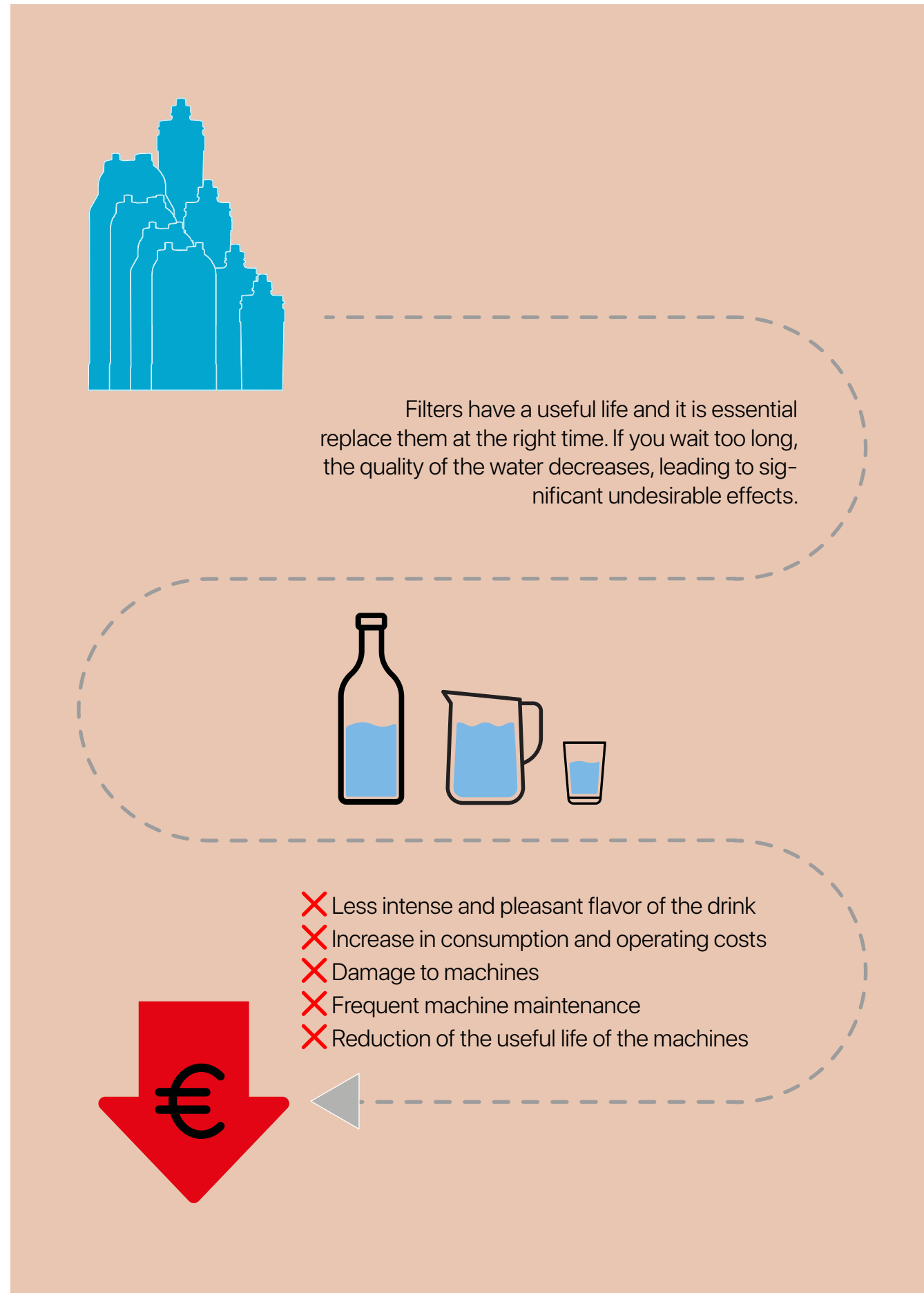


The use of water in plastic bottles endangers the entire planet.


The change must start from our home.

Let's trust domestic water.





tw



Do you need support to choose the right solution?
Our team can help you get the best results by operating together with you the most appropriate choices for your business.

Credits
Graphics: tw MKT Department

Keep in touch
facebook.com/profineitalia
instagram.com/profine_italia
[youtube.com/profine cartridge](https://youtube.com/profine_cartridge)
[linkedin.com/profine srl](https://linkedin.com/profine_srl)

#lifewithoutplastic



01

think:water
Profine®

Household

Via delle Pezze 35
35013 Cittadella (PD) Italy

tel: + 39 049 9403526
fax: +39 049 8598579

mail: info@thinkwater.com

thinkwater.com
profinefilter.com
shop.profinefilter.com