

CONNECTS TO THE NMEA2000

Once connected to the NMEA2000, the SmartGPS automatically detects and relays data from all connected devices on the network, including engine status, battery levels, depth readings, and more. Easily access and view this data from your mobile, tablet, or computer.

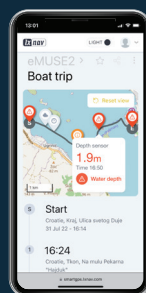
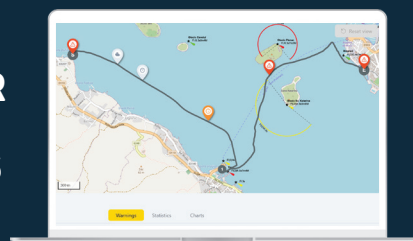


GPS ANTENNA



INSTALL YOUR TRACKING DEVICE

MONITOR YOUR VESSELS

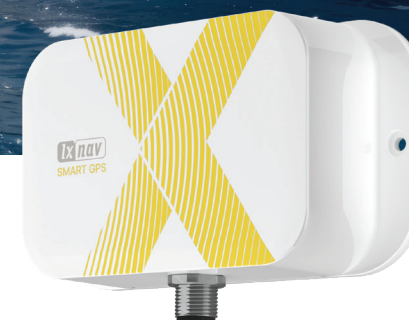


INSTANT WARNING NOTIFICATION



BOAT TRACKING

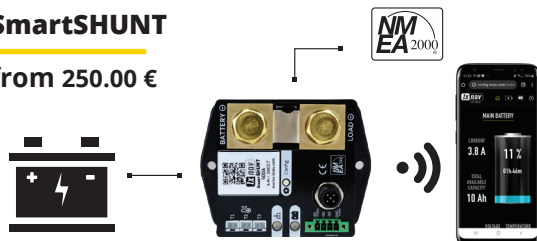
Low fuel



NEED A BATTERY MONITORING?

SmartSHUNT

from 250.00 €



GPS LIVE TRACKING

- GPS position
- Speed (SOG)
- Course (COG)
- Geofencing



NMEA2000 DATA MONITORING

- Engine rpm, oil temperature
- Fuel and fluids levels
- Battery state of charge
- Depth and sea temperature



FLEET MANAGEMENT

- Multiple boats tracking
- Complete trip history
- Warnings history
- Detailed statistics

SMARTGPS

Tracking device with GPS ANTENNA



SMARTGPS

BOAT TRACKING AND MONITORING



GPS
ANTENNA



NMEA2000
NETWORK

TRACKING



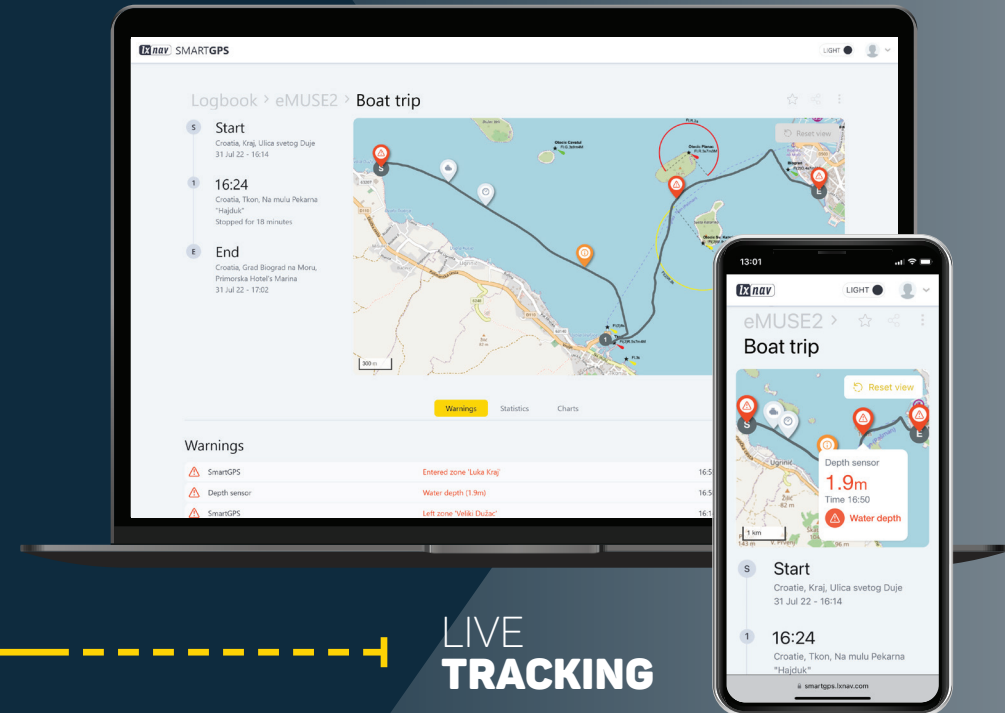
NMEA DATA



TRIP HISTORY



MULTIPLE BOATS



LIVE
TRACKING

PACKAGE DEAL

DEVICE +
1-YEAR FREE DATA PLAN
650€*

AFTERWARDS



SEASONAL
6 months:
150€



OR

ANNUAL
12 months:
220€

