

FEEL BETTER.  
TRAVEL FARTHER.

# SHOCKWAVE

MARINE SUSPENSION SEATING



## Shockwave S5-AL Suspension Base

Black: SW-07823-B • White: SW-07823-W

The Shockwave S5-AL is best suited for fresh water or cabin use with limited saltwater exposure. It offers a smoother, safer and more comfortable ride, providing an experience you've never had before. The suspension base protects occupants from the shock of wave impact in moderate to heavy seas, allowing recreational boaters to stay out longer and travel farther with less fatigue.



Easy to install and can be paired with almost any seat



4" [100mm] travel custom tuned and valved air spring shock



Designed and built in Canada

Spring and Shock	FOX Rhythm, Air Spring and Shock with Adjustable Rebound
Construction	Anodized A360 Cast Aluminum, 316 SS Hardware, Powder Coated
Suspension Design	4-Link Forward Action
Overall Performance	Better in Moderate to Heavy Seas
Warranty	2 Year – Limited Warranty

Cabin Use	Yes
Outside Deck Use	Fresh Water or Cabin Use, Limited Saltwater
Size	H: 8.8in [224mm] W: 11.2in [283mm] L: 18.5in [471mm]
Weight	27.5 lbs [12.5 kg]
Weight Capacity	Up to 300 lbs [136.1 kg]

# S5 Product Line Accessories

# SHOCKWAVE

MARINE SUSPENSION SEATING

## Shockwave Shock Pump

SW-01983-PKG

A shock pump is required to properly operate all Shockwave S5 suspension bases. The high-pressure Shockwave shock pump features a pressure gauge and bleed valve for simple adjustment.



- ✓ The S5 suspension base must be pressurized at install or it will not operate properly
- ✓ Factory pressure setting is approximately 100-150 psi
- ✓ The shock should be pressurized to match the weight (in pounds) of the occupant
- ✓ Use as needed, after install, to adjust shock pressure (psi) for a heavier or lighter person
- ✓ Maximum inflation pressure of 350 psi



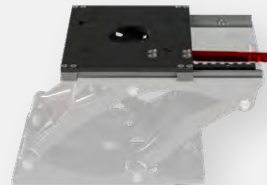
### Shockwave S5 Corbin Seat

Black: SW-04920-B • White: SW-04920-W  
Heavy-duty: SW-04920-HD



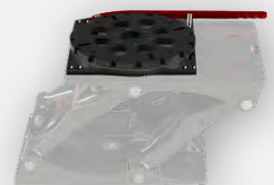
### Swivel Slide

SW-05488



### Slide

SW-05489



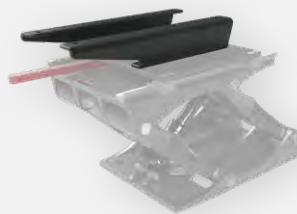
### Swivel

SW-05592



### Bulkhead Mount Adjustable Footrest

SW-07507



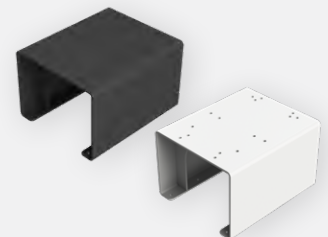
### 15x12" [27x305mm] Seat Adapter Kit

SW-08290



### Cup Holder with Aluminum Bracket

SW-01688



### Riser Boxes

3" [8cm]: SW-09502-B | -W  
6" [15cm]: SW-07251-B | -W  
9" [23cm]: SW-07920-B | -W  
12" [30cm]: SW-09494-B | -W