

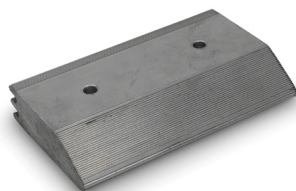
Maddox™ Anodes

Underwater Assets



LARGE WEDGE

MPS.MDXWD



LONG WEDGE

MPS.MDXLW



SMALL WEDGE

MPS.MDXSW



BUTTON

MPS.MDXBT

The Maddox Anode is a low-voltage anode that enhances anode performance for improved cathodic protection efficiency, reducing issues associated with overprotection. Over protection can look like coating failure on metallic structures, haloing around thru-hulls, and excessive growth on underwater surfaces. Over protection on wooden boats will cause alkaline degradation and delignification associated with over zincing.

The Maddox Anode features a unique shape and construction designed to increase surface area for maximum performance, efficiency and longevity. Zinc-less and cadmium-free, the Maddox Anode is the most environmentally friendly choice for cathodic protection.

Electrically isolated (unbonded) appendages can be fitted with Maddox Anodes if the other parts of the boat require different anode technology. Stainless steel swim platforms and trim tabs are at significant risk of over protection, so Maddox can be installed to overcome this problem yet maintain effective protection from galvanic corrosion. Guide available on how to check correct installation for auxiliary cathodic protection systems. It is recommended to use the Marine Protection Systems (MPS) Conductive Grease to ensure longevity of connection and ease of anode replacement.

KEY FEATURES

- 1 Improves vessel galvanic corrosion protection efficiency.
- 2 For use on fiberglass, carbon fiber and wooden boats to protect hard metals - stainless steel & bronze.
- 3 Maintains performance of protective coatings on metallic structures.
- 4 Zinc and Cadmium free – environmentally friendly.

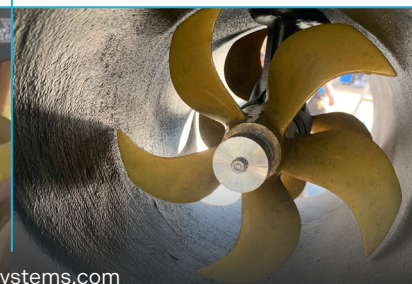
INSTALLATION & SIZE

The Large Wedge anode comes with a 0.39-inch (10mm) hole with 0.98-inch (25mm) rebate pre-drilled for installation. A second hole should be drilled to suit the application. Comes with 4 x M10 star washer.

The Long Wedge is perfect for under hull mounting to reduce drag. Ideal for direct mounting onto swim platforms, rudders & trim tabs. It has 0.31-inch (8mm) holes at 3.14-inch (80mm) hole center. Comes with 4 x M8 star washers.

The Small Wedge anode is ideal for direct mounting onto low surface area swim platforms, smaller rudders, and trim tabs. Each small wedge anode has a 0.31-inch (8mm) hole for easy installation. Comes with 4 x M8 star washers.

The Button Maddox anode has a 0.24-inch (6mm) hole for ease of installation. When fitted to bow and stern thrusters, you will experience less growth & vastly improved coating performance. Comes with 2 x M6 star washers



@marineprotectionsystems



@marineprotectionsystems



info@marineprosystems.com

CORROSION CONTROL THAT WORKS