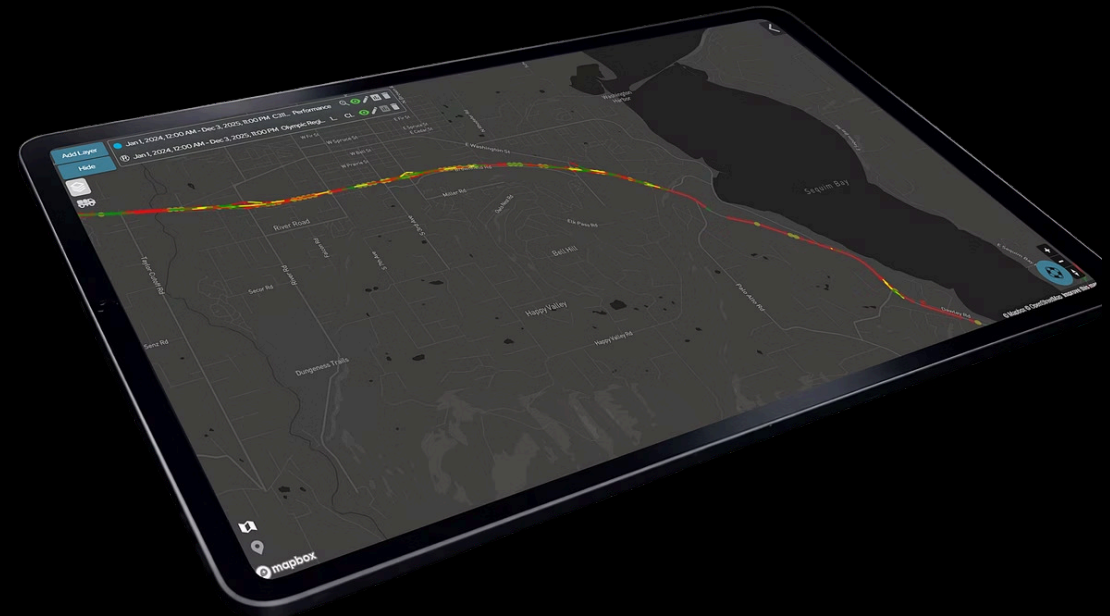




Evidence you can trust. Oversight you can act on.

Skip-Line connected equipment and Spec-Rite Online software creates a single, verifiable system of record for pavement markings, linking field activity, quality evidence, and reporting so road authorities, contractors, and airports can deliver safer roads with less administrative overhead.



From field activity to audit-ready evidence— automatically.



Automatic Field Capture

Time, location, and execution context captured without manual input—every crew, every shift.



Review-Ready Reporting

Complex multi-day, multi-crew operations summarized the way stakeholders need to review them.



Defensible Evidence

GPS and time-stamped proof-of-work built for approvals, audits, and internal accountability.



GIS Export Ready

Clean, structured data exports directly into GIS and internal asset management systems.



The Outcomes You Can Expect

1

System of Record

Single, verifiable source of truth across all crews, districts, and contractors

0

Manual Rebuilds

Eliminate spreadsheet reconstruction cycles entirely with structured auto-capture

100%

Traceable Records

Every action time- and location-stamped for defensible, audit-ready documentation

Visibility, accountability, and proof across every crew and corridor.

Project Visibility

Network-level status across districts, corridors, crews, and contractors in real time.

Evidence & Defensibility

Audit-ready documentation designed to meet local data logging and documentation requirements.

Reporting That Matches Reality

Multi-day, multi-crew work summarized the way stakeholders need to review it—no reconstruction required.

Operational Efficiency

Fewer handoffs, fewer coordination gaps, and fewer "rebuild the report" cycles

Built for every team in the pavement markings industry.



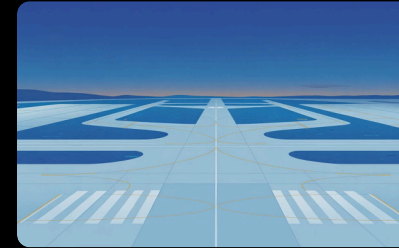
Road Authorities

- Network-wide visibility and consistent evidence across all delivery partners
- Defensible asset records for leadership and public accountability
- Faster review, fewer disputes, fewer surprises



Contractors

- Eliminate manual report rebuilding and rework entirely
- Better crew utilisation through connected field-to-office workflows
- Professional deliverables that reduce client friction and accelerate payment



Airports & Airfields

- Centralised visibility across runway, taxiway, and apron work
- Integrated application data and retroreflectivity measurements
- Repeatable QA evidence and inspection-ready documentation



Your data, where you need it.

GIS Integration

Export clean, structured asset data directly into your GIS platform. Every marking event is spatially referenced, timestamped, and ready for network analysis or maintenance planning.

Internal Systems

Spec-Rite Online outputs are formatted to integrate with existing asset management, compliance, and reporting workflows—eliminating duplicate data entry and version-control risk.

Stop rebuilding reports.

Start running a project.

Spec-Rite Online turns pavement marking initiatives into a single, verifiable system of record, linking field activity, quality evidence, and reporting with zero manual overhead.

Key Capabilities

→ Auto-Capture

Time, location, and execution context logged automatically from connected equipment.

→ Structured Outputs

Reports built to match how approvals, audits, and QA reviews actually work.

→ Interoperability

Export-ready data for GIS and internal asset management systems.

Book a Demo

See how Skip-Line connected equipment and Spec-Rite Online turn field activity into defensible, review-ready reporting, automatically. We'll walk through the path most relevant to your team.

Reserve Your Spot