
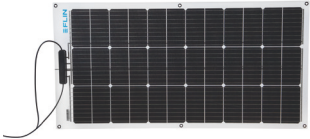
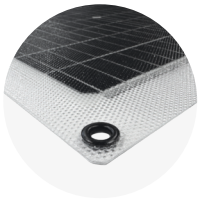


FLINflex⁺

The FLINflex⁺ solar modules can be attached to any surface using various mounting options. This allows for flexible installation — for example, on the bimini top or other locations on board. The number of panels can be adapted to match your individual energy requirements.

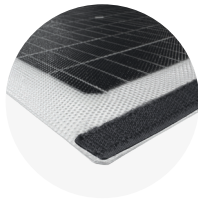
		
Power output	50 W ⁺	100 W ⁺
Average daily yield	200 Wh	400 Wh
Dimensions	640 mm x 550 mm x 2 mm	1070 mm x 540 mm x 2 mm
Weight	1.2 kg	2.3 kg
Max. wind speed	40 kn	40 kn

⁺ up to 20% more power thanks to bifacial solar module (see page 3)



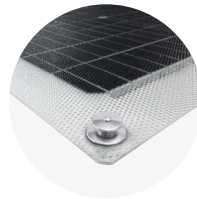
FLINflex⁺-Eyelet

Flexible mounting with eyelets



FLINflex⁺-Tex

Mounting with Velcro on bimini



FLINflex⁺-Snap

Flexible mounting with LOXX buttons



FLINflex⁺-Frame

Mounting on equipment arch

Thanks to the innovative bifacial⁺ technology, which generates power from both the front and back sides, the module's efficiency is maximized. At the same time, the various mounting options make it possible to install the panel in different positions on the boat — for instance, vertically on the railing like a windbreak. The FLINbag can be purchased as an option for flexible use and protection when stowing the modules.

