



BELASSI

MARINE POWER UNIT

belassi.com

***HANDCRAFTED
IN AUSTRIA.
DESIGNED FOR
THE FORCES
OF WATER.***

BELASSI

At the core of our product lies our engine crafted by Belassi in Austria, with a commitment to superior power, torque, and fuel efficiency, it ensures an unparalleled experience without compromise. In our low-volume production, we prioritize our customers through a specialized and a customer-centric approach.

Also what sets us apart further is the exclusive status of being the only Personal Watercraft (PWC) manufacturer in the world that produces a series turbo engine, providing a unique edge to enhance your product portfolio.

MPU APPLICATION VARIANTS

The Marine Power Unit is specifically designed to fit in small Jetboats or Personal Watercraft up to 3,6 meters (12 feet) and waterjet Powered Boats up to 6 meters (20 feet).

SMALL JETBOATS / PWC



UP TO 3,6 m / 12 feet

WATERJET BOATS



UP TO 6 m / 20 feet

UNIQUE VALUES & BENEFITS

COMPACT SIZE
PLUG & PLAY
EASILY ADAPTABLE

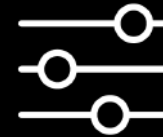
MPU APPLICATION VARIANTS



With its small dimensions and weight of only 117 kg - the engine can be mounted on small boats without compromises



To simplify the whole process, the MPU can be connected to a battery, a fuel source and a water hose and then started up



All technical information for coupling shafts, motor mounts and electronic communication protocols will be made available



We focus on a customer-centric approach, offering flexibility with a minimum order quantity of just 1 piece

AVAILABLE PACKAGES WITH PEAK POWER



MPU MINI

260hp

MPU POWER

330hp

MPU PURE

up to 400hp

PACKAGES OVERVIEW

	MPU Mini	MPU Power	MPU Pure
Peak Power hp	260	330	up to 400
Max RPM	7400	7800	8300
Fuel Requirement RON	95	95	95
Application	Jetboats until 6 m / 20 feet	Jetboats until 6 m / 20 feet	PWC / Jetboats until 3,6 m / 12 feet

ENGINE SPECIFICATIONS

Engine type	Marine 3 cylinder - 4 stroke
Displacement	1602 cc
Length x Width x Height	100 x 50 x 60 cm / 39.3 x 19.6 x 23.6 inch100 x 68 mm / 3.9 x 2.7 inch
Bore x stroke	Turbocharged with water-cooled intercooler
Intake system	Pressure control via electromagnetic wastegate valve
Turbocharger	Water cooled with water injection
Exhaust system	DOHC - 12 V
Valve train	9.1:1
Compression ratio	Full dry sump 6-stage gear pump
Lubrication system	Open loop cooling
Cooling system	Made of aluminium
Valve cover	Cylinder liners: NSC coated, forged crankshaft,
General information	conrod and piston for high engine performance with
	low pressure casting
Weight	117 kg / 260 lbs

STANDART PACKAGE

WHAT IT'S INCLUDED

In every Marine Power Unit Package it's already included the following components:

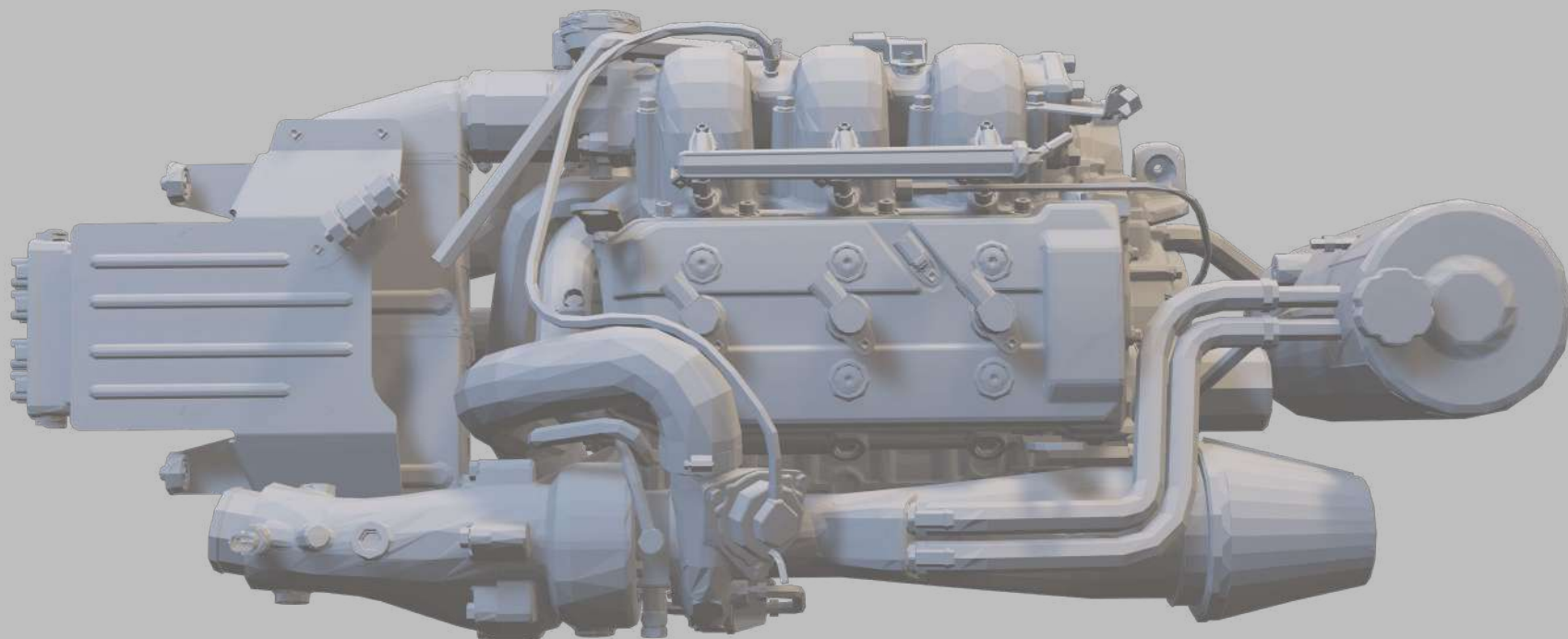
- Engine + Water to air intercooler
- Wire harness with complete E-architecture
- ECU
- Starter relay with start stop
- 5 inch Touch Display

AVAILABLE ADD-ON

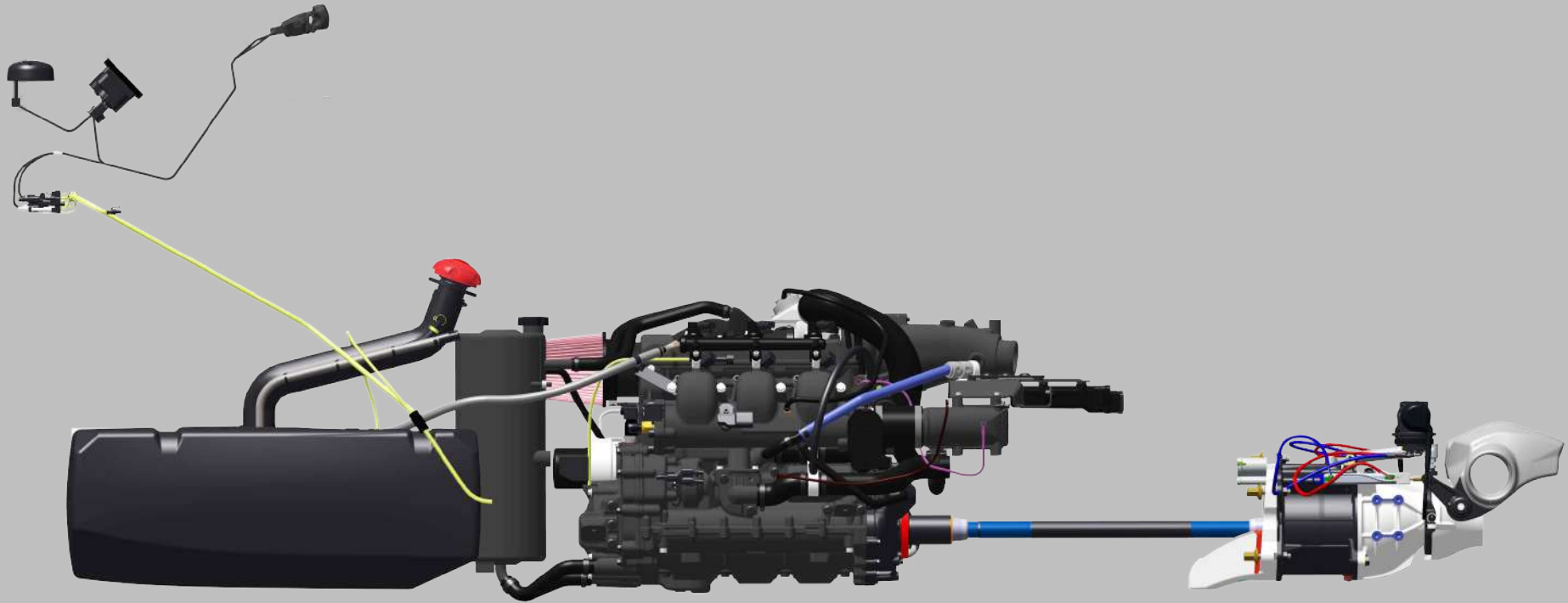
Additionally, there will be a variety of options available to add on, including:

- Jet pump with drive shaft
- Additional alternator for second battery
- Handlebar mounted throttle lever
- Hydraulic brake / reverse and trim system
- 7" touch screen color display
- Mode Keypad
- Fuel system (pump and sender or complete tank)

3D DATA



COMPONENTS OVERVIEW



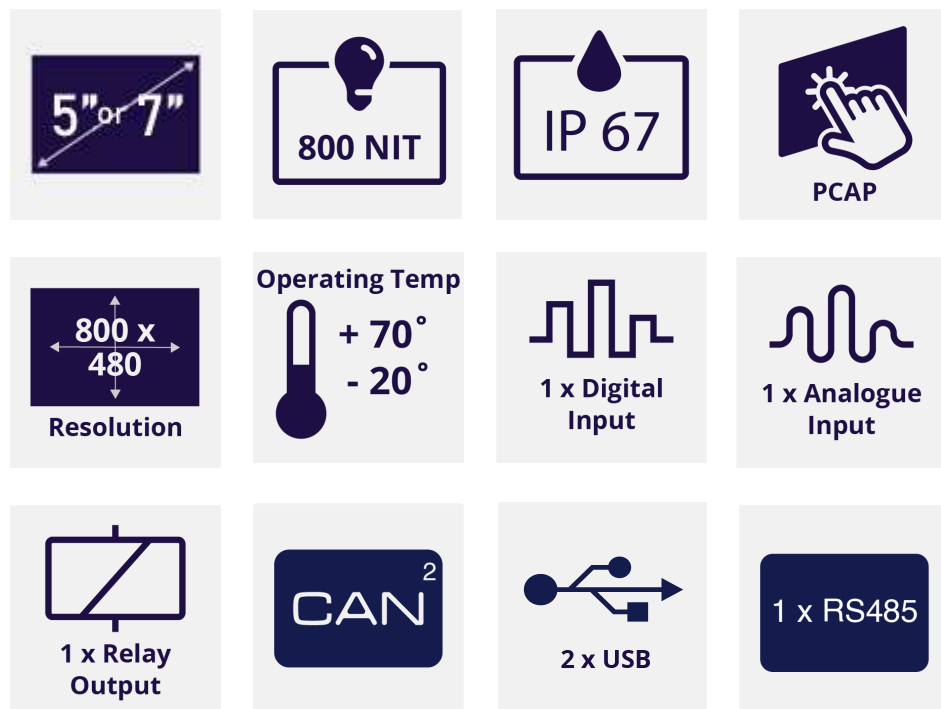
G25-550

- G Series Compressor Aerodynamics for maximum performance
- 48mm Turbocharger compressor wheel
- 80% maximum compressor efficiency
- MAR-M Alloy Turbine wheel rated up to 1050°C / 1922 °F
- Stainless Steel turbine housing rated up to 1050°C / 1922 °F

Garrett
ADVANCING MOTION



FEATURES



STANDARD FEATURES

- High intensity led status indicators
- Multicolor LED backlight
- RGB LED indicators
- Event status transmission
- Periodic status transmission
- Vertical or horizontal mount
- LED acknowledgement



MPU IN ACTION

THE MARINE HYPERCRAFT BURRASCA

We combine the performance of our Marine Power Unit with the current Personal Watercraft to create the most luxurious and best performing Marine Hypercraft on the market.



POWER

320_{hp}

DRY WEIGHT

367_{kg}

POWER / WEIGHT RATIO

0,87

10 > 80 km/h

2,8_{sec}

10 > 100 km/h

3,6_{sec}

 **BELASSI**



***CURRENT
PROSPECTS
MINI JET***



***CURRENT
PROSPECTS
JET BOAT***

***CURRENT
PROSPECTS
JET CARS***





***CURRENT
PROSPECTS
MILITARY***

AWARDS



red**dot** winner 2021



BIGSEE
PRODUCTDESIGN
AWARD 2022
WINNER



german
brand
award
'22
newcomer
brand
of the year

BELASSI STANDS FOR OUTSTANDING DESIGN

Yesterday's vision is today's technology,
and today's limits are the starting blocks of
tomorrow.

DISTRIBUTION



OUR WORLDWIDE DEALERS NETWORK

Belassi is proud to install a worldwide network of partners. These are specially appointed and are able to provide you with a personalized service for your needs.

AFTERSALES MADE EASY



THE PROCESS FOR ORDERING SPARE PARTS & MAINTENANCE

Connected to our dealer's network there is an user friendly system that helps users to fulfil their needs. No matter if ordering spare parts or looking for some video instruction, everything is one space.

GET IN TOUCH

We will help you with any questions
or requests and wishes, contact us.
office@belassi.com | +43 732 249 251

send email

book a meeting



The information and illustrations in this brochure reflect the state-of-the-art technology when it went to press. The products shown are preproduction models; production models may vary slightly. Depending on the version, the illustrated features are either standard or optional. In our efforts to constantly improve the quality of our products, Belassi reserves the right to change technical details, optional and standard features, and colors at any time.

© Belassi | 2024