

ELEVATE TABLE PEDESTAL

ELEVATE

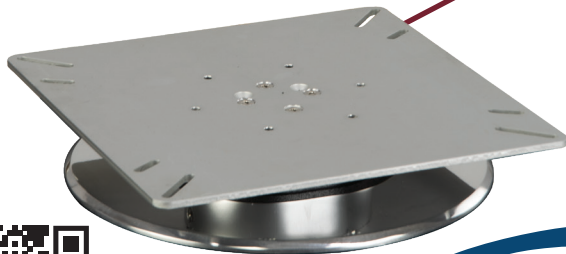
12V electric actuated table pedestals wire into any 12V switch for operation. Three positions: deck level, lounge/casting, and table/dining level. Actuators are rated IP65 for marine environments with a lifting force of up to 125lbs. Mounts to any table top with multiple mounting patterns. Elegant elliptical shape for appearance and rigidity with brite dip anodized aluminum finish.



29"
FLOOR-TO-TABLE

20.25"
BELOW DECK

STOWED



1660238

ELECTRIC TABLE PEDESTAL, THRU-DECK
AVAILABLE NOW!

- Height Range: floor to 29", requires 20.25" below deck
- Clean smooth polished deck base with no visible fasteners. Below deck mounting studs provided



1660239

ELECTRIC TABLE PEDESTAL, SURFACE MOUNT
AVAILABLE LATE 2025!

- Height Range: 13.5" to 27.25"
- Low profile 10" round base with 9" round mounting pattern

