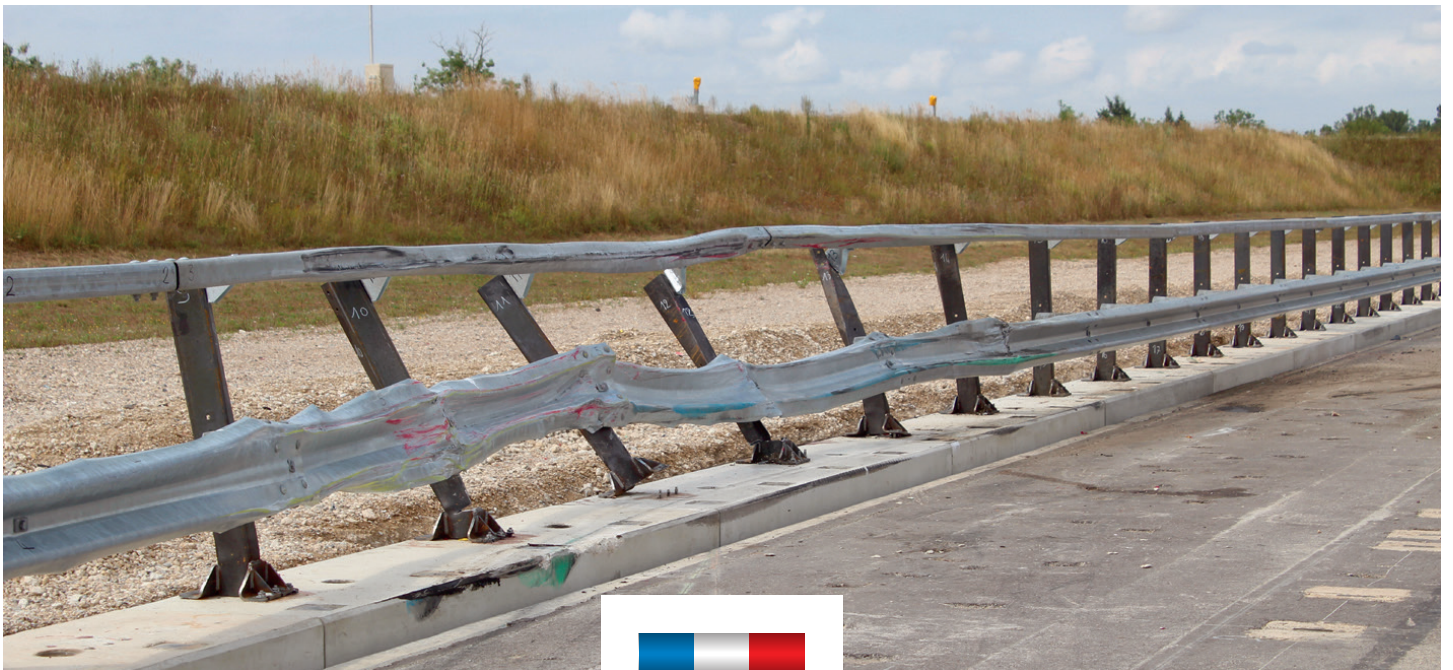




# Safety barrier

Euro H2-F4



FABRICATION  
FRANÇAISE



From design to installation



# Safety barriers

Euro H2-F4

SAFETY BARRIER IN ACCORDANCE WITH EN 1317-5 : 2007 + A2 :2012

## BARRIER PERFORMANCES

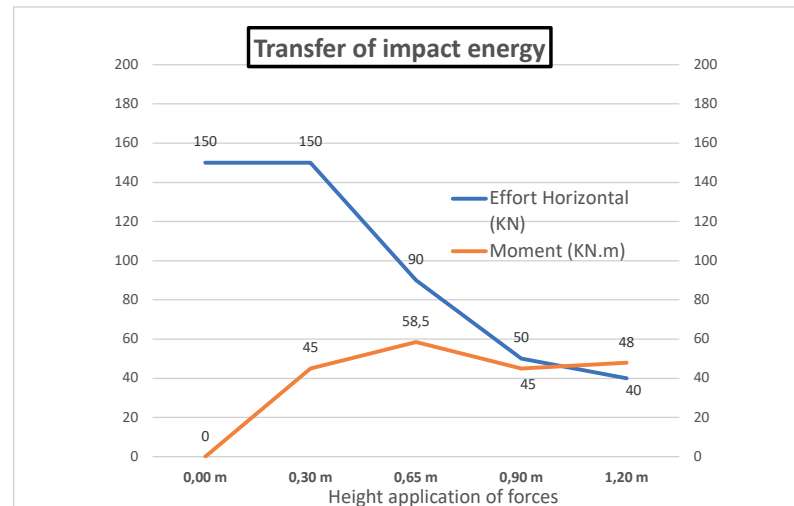
- Containment level : H2
- Normalised working width level : W4
- Impact severity level : Asi - A
- Dynamic deflexion : 1m00
- Crash test length : 68 meters
- Height : 1.2 meters

## GALVANIZATION IN ACCORDANCE WITH EN 1461

### Option :

- Powder coating

## CONNECTIONS BETWEEN RAILINGS AND CONCRETE WALLS



The 2 most unfavorable scenarios :

Moment : 45 KN.m / horizontal force : 150 KN

Moment : 58.5 KN.m / horizontal force : 90 KN

COMELY

6, avenue du Docteur Schweitzer - 69330 MEYZIEU - Tél. : 04 78 04 07 49 - Fax : 04 78 04 10 46

[www.comely.fr](http://www.comely.fr)