

An aerial photograph of a sailboat with a white sail on a deep blue ocean. The horizon is visible in the distance under a blue sky with scattered white clouds. The text 'nautech' is overlaid in the top right corner.

nautech

**Real-time Vessel Monitoring  
with extensive connectivity**

***“Nautech core is the heart of cutting-edge technologies offshore. Our mission is to interconnect all technologies onboard. Access, manage and control. With no limits. Anywhere. Anytime. Secure.”***

**Peter Maros**  
CEO, Nautech Ltd.

## About Us

Nautech Ltd. focuses on maritime applications, marine and vessel related ICT technologies, including navigation, control, monitoring and “smart-boat” solutions, targeting the pleasure yachting. The employees are highly qualified engineers; in addition, they also hold telecommunications and safety engineering design qualifications.

We provide an all-in-one, seamlessly integrated system that empowers vessel owners with real-time monitoring, remote control, and enhanced safety features, offering a smart, reliable, and efficient solution to simplify and secure marine vessel management.

Nautech is to perform unique on-demand System Integration and Support Services with our products, featuring:

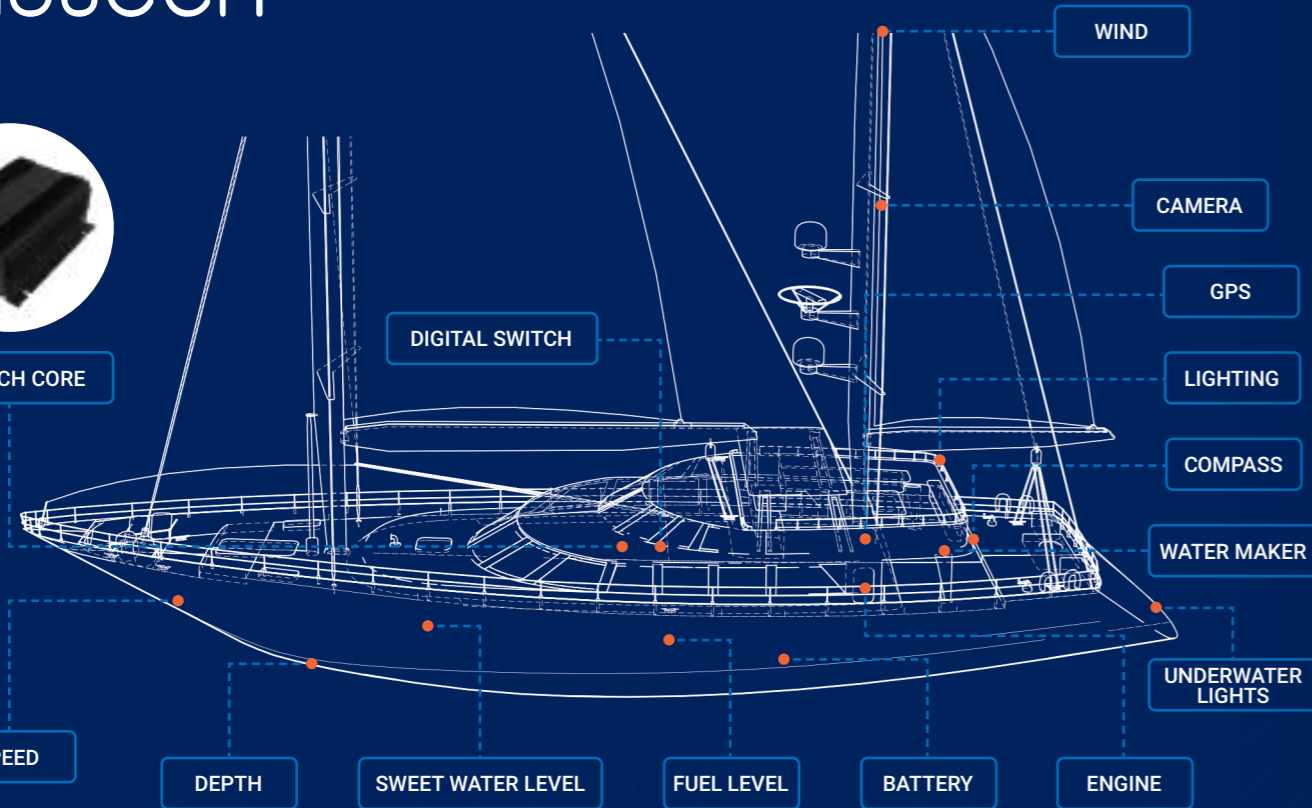
- Remote Supervision (Sensors and Camera),
- IP & NMEA Communication Gateway and Router,
- Skipper Support with real-time sensor data processing & MFD integration,
- Cloud Data processing,
- Digital Switch functionalities,
- Configurable Alarm System.

Our products are best suited for motor yachts, sailing boats, catamarans, super yachts, and day cruisers, supporting both pleasure yachting and the needs of skippers.

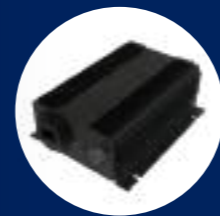
# nautech



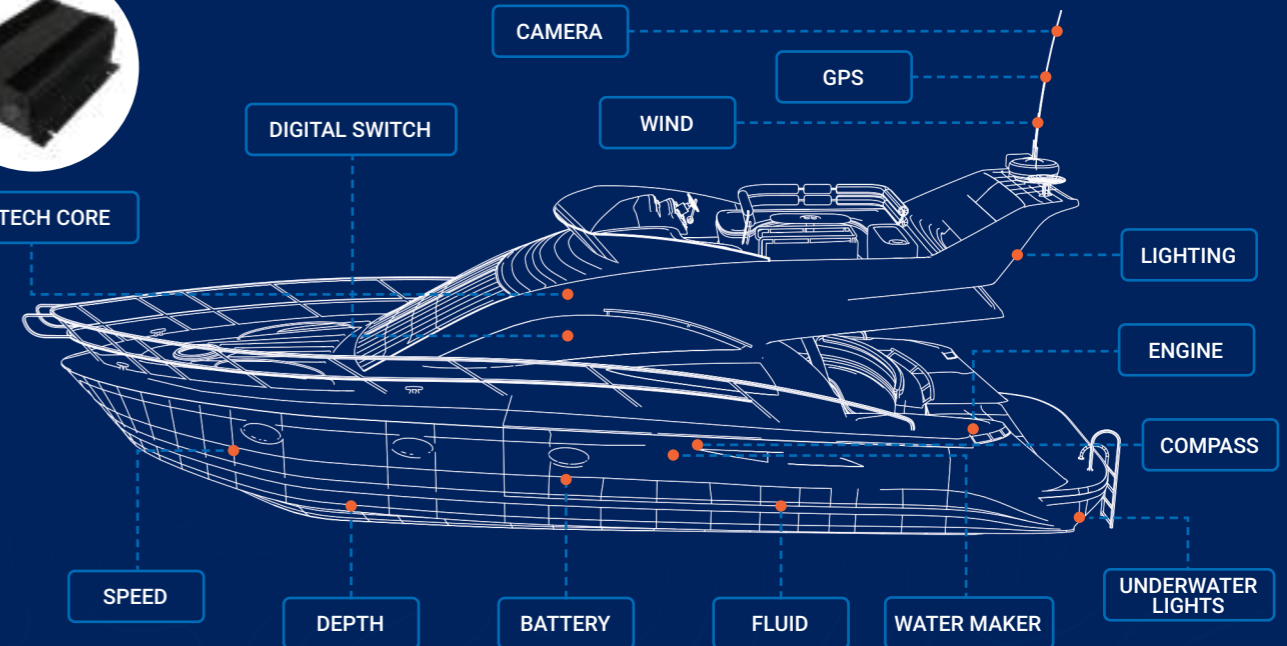
NAUTECH CORE



# nautech



NAUTECH CORE

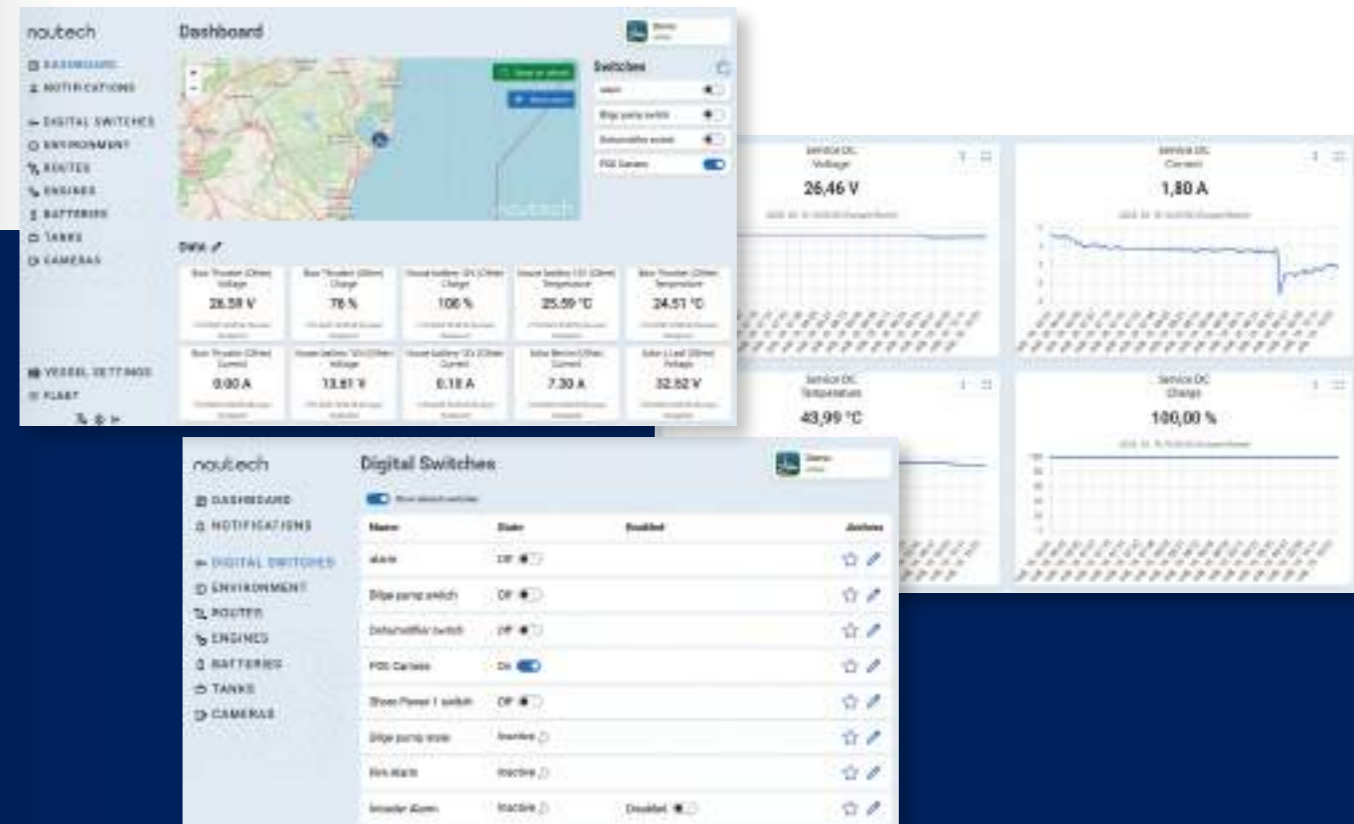


# nautech Dashboard

The nautech Dashboard is an advanced monitoring interface designed for integration with NMEA-based marine systems.

It provides real-time telemetry from onboard sensors and control units, including engines, generators, digital switches, and environmental instruments. Built using a modular architecture, the dashboard supports dynamic widget rendering, role-based access control, and custom data bindings via WebSocket or REST APIs. Its responsive front-end is optimized for both touchscreen and desktops, ensuring cross-platform

compatibility. Historical logging and trend analysis are built in. Alerts can be configured using threshold values, custom hysteresis, or event-based triggers. The system is hardened for marine environments with offline fallback modes and local caching. Designed for scalability, nautech Dashboard supports single-vessel and multi-vessel configurations with unified fleet dashboards.



# nautech core

Nautech core is the heart of remote supervision for coastal sailing. Our mission is to interconnect all technologies onboard. Access, manage and control. With no limits. Anywhere. Anytime. Secure.

Core is an embedded NMEA-compatible, IP68-protected standalone module. Contains Internal Battery, GNSS Receiver, isolated NMEA2000 with onboard 4G Internet Modem and managed internet subscription, and Power measurement sensors. It features Remote Supervision, NMEA Sensor Integration, Configurable Alarm System, Realtime Dashboard and MFD Integration, Historical Database (cloud & local) for NMEA-metrics.

Recommended for inshore and coastal sailing.



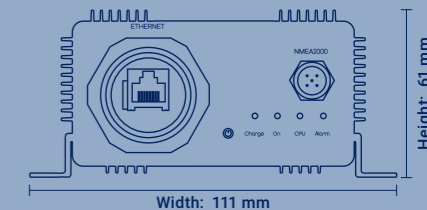
**nautech core**  
top view



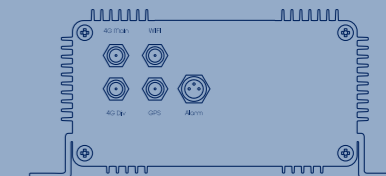
Core is the Basic configuration including Ethernet, NMEA2000, 4G, GPS and Alarm connectors:

**nautech core**  
front view

Length: 160 mm  
Mounting Width: 135 mm  
Mounting Length: 265 mm



**nautech core**  
back view



# nautech core PRO

Core PRO contains the interfaces and capabilities of Core (Ethernet, NMEA2000, 4G, GPS and Alarm connectors), meanwhile PRO it extends with Digital Switch: 4x contact inputs, 4x relay outputs, Embedded 3D accelerometer and compass Option for NMEA0183, AIS receiver or Digital Switch extender.

Recommended for coastal and offshore sailing.

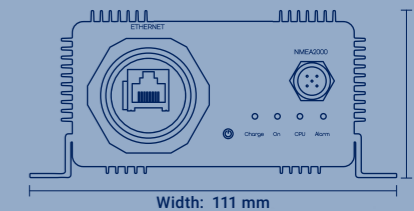


**nautech core PRO**  
top view

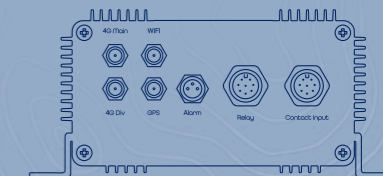


**nautech core PRO**  
front view

Length: 160 mm  
Mounting Width: 135 mm  
Mounting Length: 265 mm



**nautech core PRO**  
back view



# nautech core PRO+

Core PRO+ contains all the interfaces and capabilities of core PRO (Ethernet, NMEA2000, 4G, GPS, Alarm connectors, Digital Switch: 4x contact inputs, 4x relay outputs, Embedded 3D accelerometer and compass, Option for NMEA0183, AIS receiver or Digital Switch extender), meanwhile PRO+ features the NMEA OneNet port, enabling the future NMEA network of the yachts on Gigabit Ethernet bases.

We are featuring an Alarm System Integration to AI-based floating-object detection camera systems. Also ideal for vessels with heritage of NMEA0183 integration.

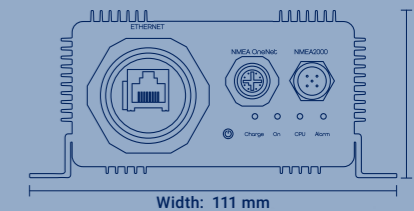
Recommended for offshore and ocean sailing.

nautech core PRO+  
top view

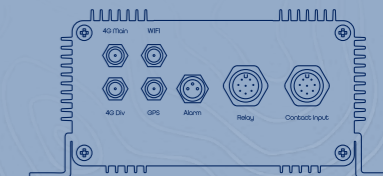


nautech core PRO+  
front view

Length: 160 mm  
Mounting Width: 135 mm  
Mounting Length: 265 mm



nautech core PRO+  
back view





## core

Internal Battery | GNSS Receiver | Galvanically Isolated NMEA2000 communication, with onboard 4G Internet Modem | Integrated Power measurement sensors | Remote Supervision | NMEA Sensor Integration | Configurable Alarm System | IP Camera Integration | Realtime Dashboard and MFD Integration | Hystorical Database (cloud & local) for NMEA-metrics, and Digital Switch Control

## core PRO

Internal Battery | GNSS Receiver | Galvanically Isolated NMEA2000 communication, with onboard 4G Internet Modem | Integrated Power measurement sensors | Remote Supervision | NMEA Sensor Integration | Configurable Alarm System | IP Camera Integration | Realtime Dashboard and MFD Integration | Hystorical Database (cloud & local) for NMEA-metrics, and Digital Switch Control | Internal Compass

+ Digital Switch

+ NMEA0183 Option

## core PRO+

Internal Battery | GNSS Receiver | Galvanically Isolated NMEA2000 and NMEA0183 communication, with onboard 4G Internet Modem | Integrated Power measurement sensors | Remote Supervision | NMEA Sensor Integration | Configurable Alarm System | IP Camera Integration | Realtime Dashboard and MFD Integration | Hystorical Database (cloud & local) for NMEA-metrics, and Digital Switch Control | Internal Compass

+ NMEA OneNet Compliance

+ NMEA0183 Option

+ Digital Switch

+ AI system integration

# nautech isolate



Nautech isolate is a floating 12V DC to 12V DC converter, to produce galvanically isolated 12V Power. Our isolate unit creates a separate power section on a specific part of the NMEA2000 network, to prevent the sensitive devices from EMC effects and galvanical corrosion.

Nautech isolate protects against:

- galvanic corrosion via floating DC-DC conversion and isolation,
- burst effects via overvoltage suppression,
- overcurrent via self-recovering fuse,
- reverse polarity,
- noise via filtering on DC supply.



# Our Services

## Design of unique Marine Communication, Control and Power Networks

We deliver Integrated Solutions for our Customers, to cover the complete portfolio from identified user needs to installed on-demand systems: We offer a set of own-designed and developed embedded Networking, Control and IOT Products.

---

## System Integration

We can provide the process of combining different subsystems or components into a single, unified system to ensure they work together seamlessly. It involves aligning software, hardware, and communication systems to enable efficient data flow and coordination, improving overall functionality and performance. System integration helps streamline operations, reduce complexity, and enhance collaboration across various technologies or platforms.

---

## Managed Services & Professional Consulting

We have the expertise to perform customized professional engineering services according to the customer's requirements, including Network Design and System Integration into the vessel's NMEA, Communication and Power Networks.

---

## Training and After Sales Services

For our partners, system integrators, and the technical teams of end users, we arrange on-line or on-site training sessions on the installation process. In addition, tutorial videos and installation guides are also available.



## CONTACT US



Phone number:  
+39 334 1420282 | +36 30 178 3858  
Email: [sales@nautech.cloud](mailto:sales@nautech.cloud)

