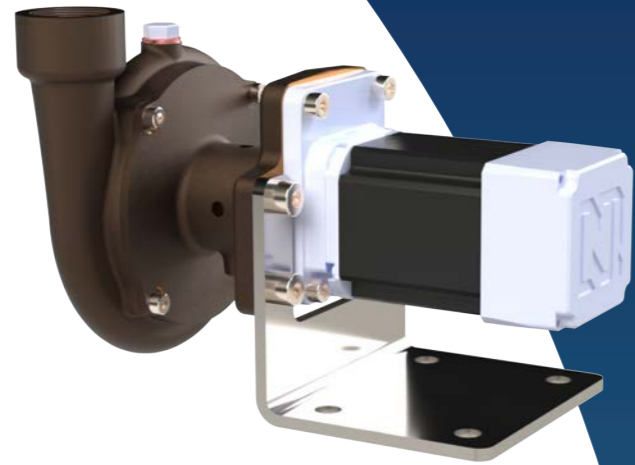
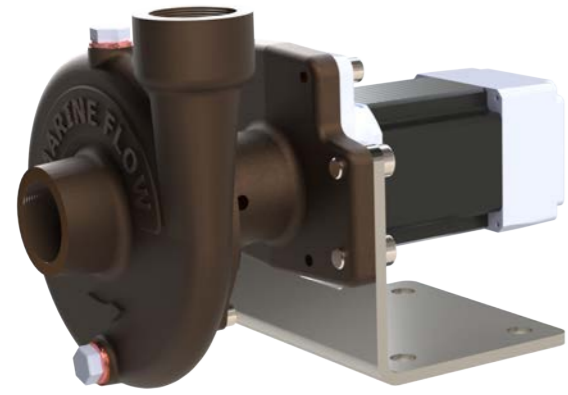
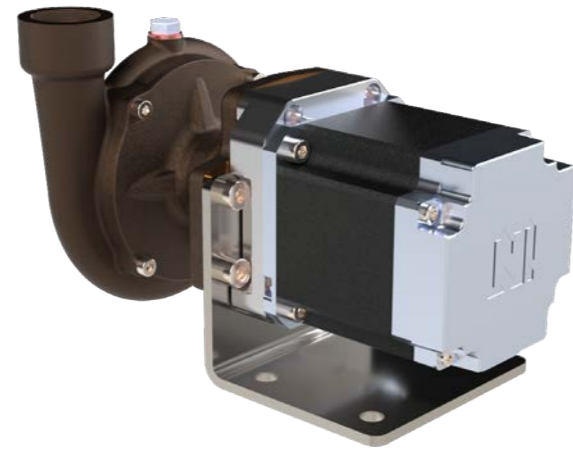


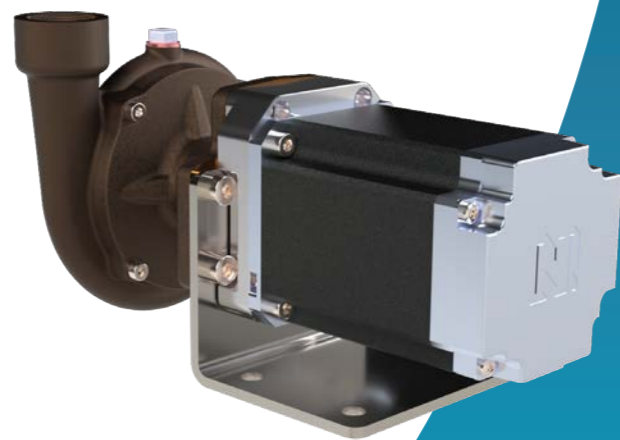
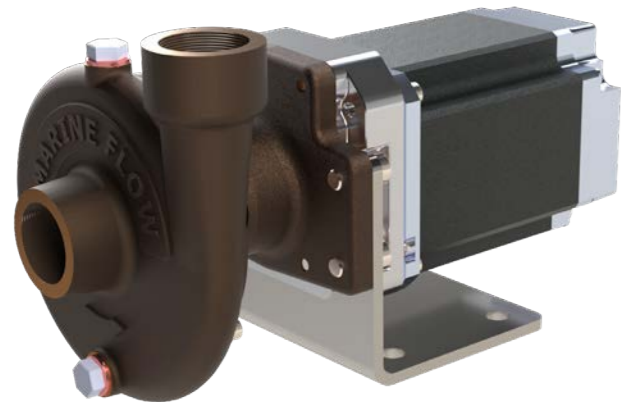
PC96-600



PC96-1500



PC96-3000



MF - From engineering to finished product

At Marine Flow, we design and manufacture products tailored to our customers' specific requirements, recognising that reliability and durability are paramount and vary by application.

Our flexible impeller pumps offer highly efficient solutions for nearly all raw water pumping needs. As innovators in the field, we were the first company globally to advance this technology, securing two new patents for our developments.

Thanks to these innovations, MF can deliver flexible impeller pumps with flow rates from 20 to over 2,500 LPM. These pumps offer improved purchase and lifetime costs compared to competitors, while servicing remains quick and straightforward.

Our in-house design team manages every stage - from capturing initial requirements to product design, validation, manufacturing, and testing. Using advanced 3D modelling, FEA, and CFD simulation, we ensure that every product we deliver not only meets but exceeds expectations.

MF - Pumps

- Unique, application specific design
- Mechanical seals used as standard (Other configurations available on request)
- High quality seals for long life - with hard face options available for heavy duty applications
- All wetted part in stainless steel or bronze
- Bearings from SKF or FAG in automotive quality
- Pumps made to customers' needs

MF - Pump Manufacturing

Pumps are assembled to order in our production facility in Scotland.



MF - Quality Assurance

We hold ourselves to the highest standards of reliability and durability, whether for use on land or at sea. To guarantee this, every product undergoes rigorous testing to ensure it meets exacting performance requirements. By sourcing only premium components from trusted suppliers, we deliver exceptional performance and long-lasting service as a matter of course.

MARINE FLOW LTD
UNIT 6 | 9 GLEN TYE ROAD | BROADLEYS INDUSTRIAL ESTATE | STIRLING | SCOTLAND | FK7 7LH
SALES@MARINEFLOW.COM | WWW.MARINEFLOW.COM

EC-PUMPS

MARINE FLOW



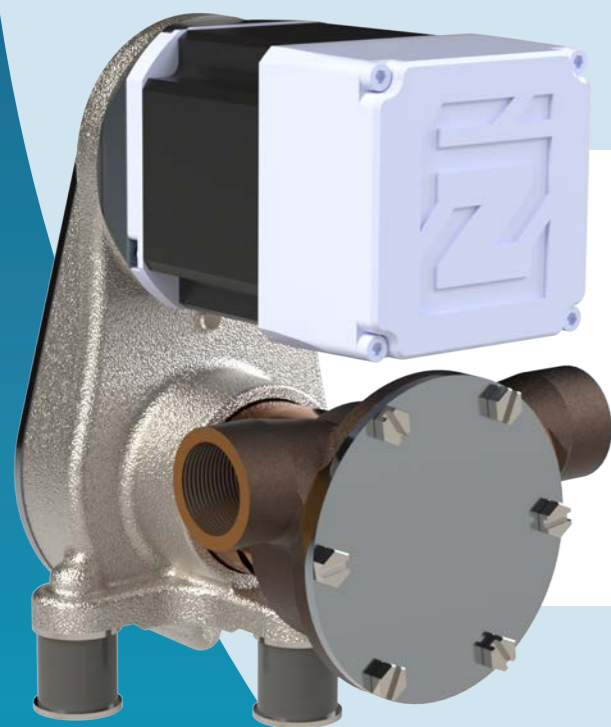
EC motors, or electronically commutated motors, are advanced electric motors that offer several advantages over traditional AC and DC. These motors use electronic control systems to regulate the speed and torque of the motor, resulting in improved efficiency, higher power density, and greater reliability.

One of the key benefits of EC motors is their high efficiency. They are capable of converting a higher percentage of input power into useful output power compared to AC motors, resulting in lower energy consumption and operating costs. Additionally, they operate at a more consistent and precise speed, making them ideal for applications that require precise control, such as robotics, medical equipment, and industrial automation.

EC motors also offer superior durability and reliability. Since they have fewer mechanical components than AC motors, they are less prone to wear and tear and require less maintenance. They are also less susceptible to electrical interference and voltage fluctuations, which can damage traditional motors.

Another advantage of EC motors is their compact size and lightweight design. This makes them ideal for applications where space is limited, such as in automotive and aerospace industries. Additionally, the precise control offered by EC motors enables them to be used in a wide range of applications, from cooling systems and refrigeration units to ventilation systems and pumps.

Overall, EC motors are a highly advanced and efficient type of electric motor that offer numerous benefits over traditional AC motors. As technology continues to evolve, we can expect to see even more innovative applications of this ground breaking technology.



Advantages

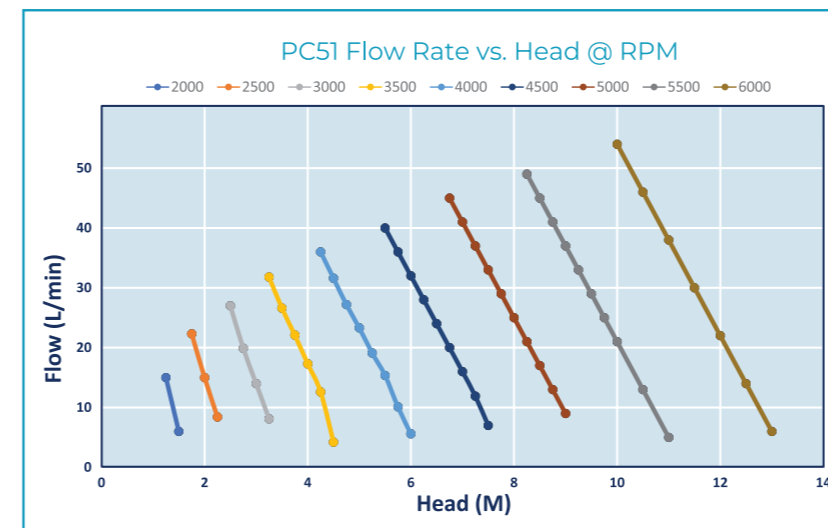
- Long lifespan and reliability.
- Self-monitoring.
- Configurable fault monitoring (speed / current / voltage alarms).
- Speed or torque controlled.
- Internal or a variety of external controllers possible.
- Can-bus (optional) / RS 485 / PLC Controllable.

PC51-1U-300W

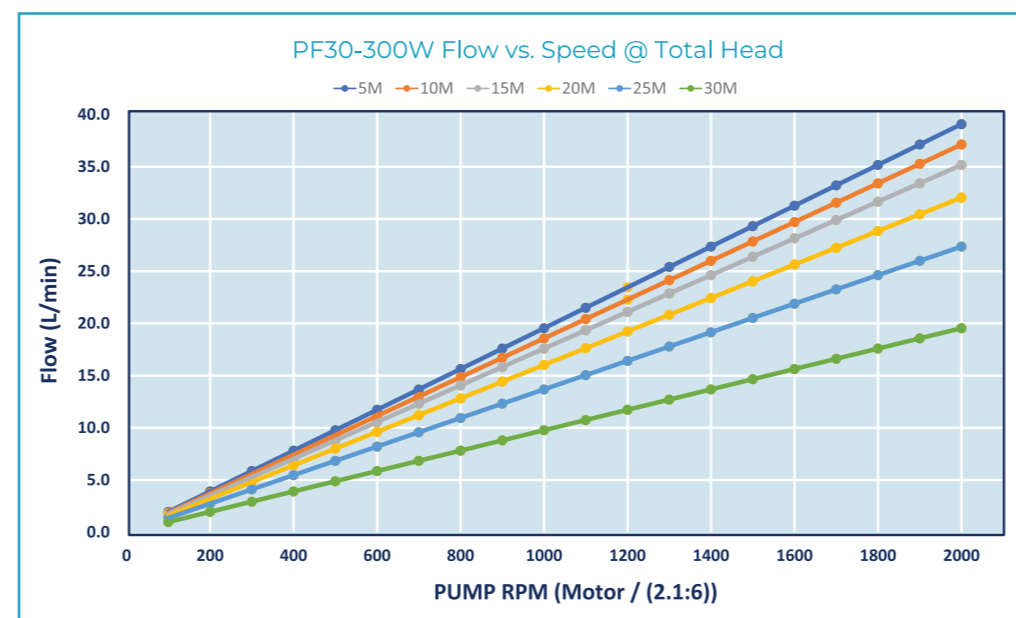


- Glycol Circulation Pump (Raw Water option available)
- 12V / 24 or 48V DC Motor options with integrated or external controller options.
- Perfect for integrated systems.
- Up-to 4 pump heads can be driven on 1 motor, modular expansion for multiloop systems.
- Each pump head can deliver independent flow characteristics.
- Long Life with quiet operation, perfect for mobile applications.

PC51-2U-600W



PF30-300W



- Flexible Impeller Raw Water Pump
- 24V DC Motor with integrated controller (12, 24 and 48V DC version available)
- Long life, with increased starting torque. Perfect for mobile application requiring suction lift.

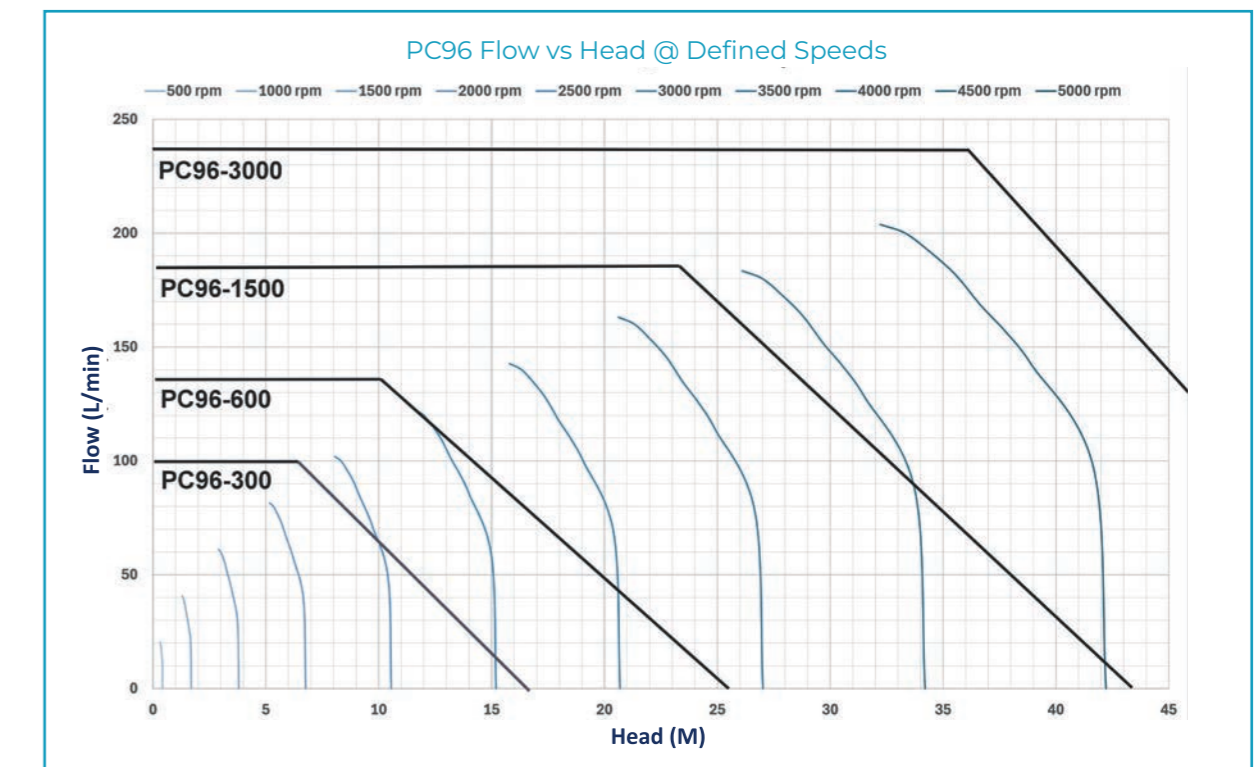
High performance pumps built to last

Our EC Centrifugal pumps are designed for longevity. Thanks to their low-wear construction, they run reliably for years – with minimal maintenance. Less time for maintenance means more time for productivity.

Powerful and efficient

Maximum performance with minimal energy consumption: These pumps get the most out of every watt-hour. They ensure fast starts and particularly smooth operation – ideal for demanding applications.

Robust in use for Marine applications, our pumps are built for the toughest conditions. They keep their promises and deliver consistently strong performance.



PC96-300

