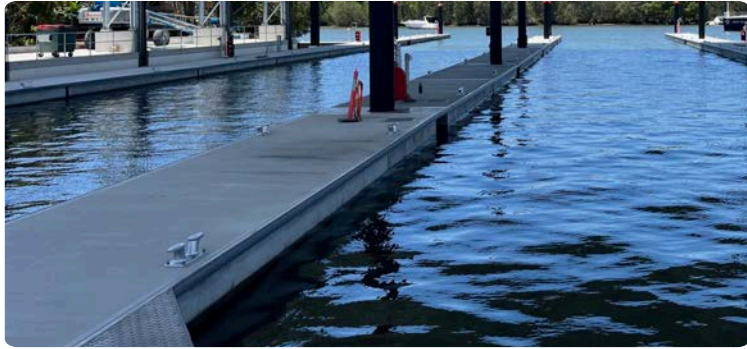










600MM ALUMINIUM HORN BOLLARD

PRODUCT GUIDE



Product Highlights

-  **High Load Capacity:** Working Load Limit (WLL) exceeding 10 tons, capable of securing vessels over 200 tons.
-  **Rope Compatibility:** Accommodates ropes up to 40mm in diameter, meeting superyacht and large vessel standards.
-  **Innovative Horn Design:** Engineered for handling multiple mooring lines at steep angles, reducing rope stress and wear.
-  **Lightweight & Durable:** Gravity cast aluminum construction for corrosion resistance and extended durability in marine environments.
-  **Stainless-Steel Hold-Down Assembly:** Enhances structural strength and ensures reliable performance under heavy loads.
-  **Customizable Finish:** Standard cast finish can be painted or polished to meet aesthetic and functional preferences.
-  **Consistent Quality:** Die-cast aluminum ensures repeatability and consistency, outperforming lower-quality fabricated alternatives.
-  **Versatile Applications:** Ideal for marinas, commercial wharfs, heavy-lift facilities, superyacht moorings, and heavy-duty pontoons.

Features & Benefits

-  **Enhanced Safety:** Securely moors large vessels, reducing risks in challenging conditions.
-  **Reduced Maintenance Costs:** Corrosion-resistant materials and stress-reducing design minimize wear and damage.
-  **Improved Efficiency:** Supports multiple lines and steep angles, streamlining mooring operations.
-  **Cost-Effective Alternative:** High-quality, consistent construction at a competitive price.
-  **Long-Lasting Performance:** Built to withstand harsh marine environments, ensuring durability over time.
-  **Design Flexibility:** Customizable finishes to match specific project requirements and aesthetics.
-  **Broad Usability:** Suitable for a wide range of marine structures and vessel types.

