



HELIOS 32

SUN AWNINGS POLE SYSTEM

20 to 190 cm high. 2 different awning connections.

EXIT
CARBON

BETTER
YACHTING



MADE IN ITALY

www.exitcarbon.com

HELIOS 32

Sun Awning Poles System

Featuring **high-tech carbon fiber** construction and fantastic **glossy finishing**, Exit Carbon's sun awning poles come in a variety of lengths and diameters to perfectly match your stern or bow deck.

Designed for use on motor and sailing yachts, these poles are extremely **light-weight, easy to set up, and stow anywhere** with wall clips.

TECHNICAL DATA

HEIGHT FROM DECK	20 to 190 cm
MAX LOAD	32 kg to 55 kg
DIAMETER	32 mm
ANGLE	0° or 6°
CONNECTION	eye-bolt or Clamcleat®
AWNING SURFACE	max 5 m ²



Sun Awning Poles combine strength and beauty

HELIOS is a carbon sun awning system specially designed for sail and motor yachts. It consists in carbon fiber poles of different diameters, a set of female deck sockets, made both of stainless steel and aluminium, with different depths, thicknesses, flange diameters, and standing angles. Most sockets can be chosen with different fitting options (water drains, special bottom reinforcements, steel counter-flanges) to solve most installation problems. On request, in cooperation with MarineWerk, we can supply the awning, custom made with Serge Ferrari Soltis or Sunbrella fabrics.

STRONG, CONVENIENT & AESTHETICALLY IMPECCABLE

Carbon fiber strength makes these poles stable support for your sun awning. No vibrations means a quieter boating experience at anchor, but also during slow navigation with no wind. Their simple elegance adds value to any boat.

SAFE AND EASY TO SET-UP & STOW

Set up the extra-light poles by sliding them into the polymer lined sockets. Friction keeps them in place when the sun awning is tightened. Release the awning and effortlessly slide the poles out. Just as quickly hang them against any bulkhead or below the locker lid with our polymer wall clips. Moreover if they slip from your hands, they will not harm people or damage the boat.

CUSTOMIZE YOUR SHADE

Helios poles come in Exit Carbon's signature carbon look, protected with a UV resistant clear coat. Available both with the exclusive unidirectional fibers completed by a diamond pattern or with a more traditional carbon fabric finishing. Of course they can also be painted in a custom color of your choice.



Fit it where it's most convenient, preserving your boat from excessive stress

✓ Determine the max load you will apply to the poles

adding the wind effect on the awning, and check on the next page which diameter is the right pole for you, choosing from 22 lengths (from 20 cm to 230 cm), four diameters (32 mm, 38 mm, 60 mm, 80 mm), and two angles (0° or 6°).

As a rule of thumb, we suggest the following limits for our poles:

HELIOS 32 → Max 5 m²

HELIOS 38 → Max 8 m²

HELIOS 60 → Max 20 m²

HELIOS 80 → Max 50 m²

✓ Carefully choose the most appropriate socket for your own yacht.

A long pole will apply a very high concentrated load to the socket and this load will have to be safely transferred to your boat structure, avoiding stress concentrations on weak points. This is why we favor **wide deck flanges**, which distribute the bending load on a bigger deck area, when a small flange could easily collapse the deck sandwich. We also supply **threaded backing flanges** with a double effect: they make installation easier, without nuts and washers, but they also distribute in a much more effective way the loads on the whole circumference. Another useful option to consider is the **"threaded pin"** on the bottom of the socket, which you can use to connect the bottom of the socket with a bracket to a nearby bulkhead for additional bracing. This option is strongly advised for tall poles and big awnings. Another excellent way to reduce the high loads on a socket is the use of **bulkhead or handrail foldable fittings**, which normally support a pole in a much higher position than a deck socket. On smaller boats, we provide also **angled sockets** to create a greater shade area at shoulder height, while keeping a small perimeter on deck.

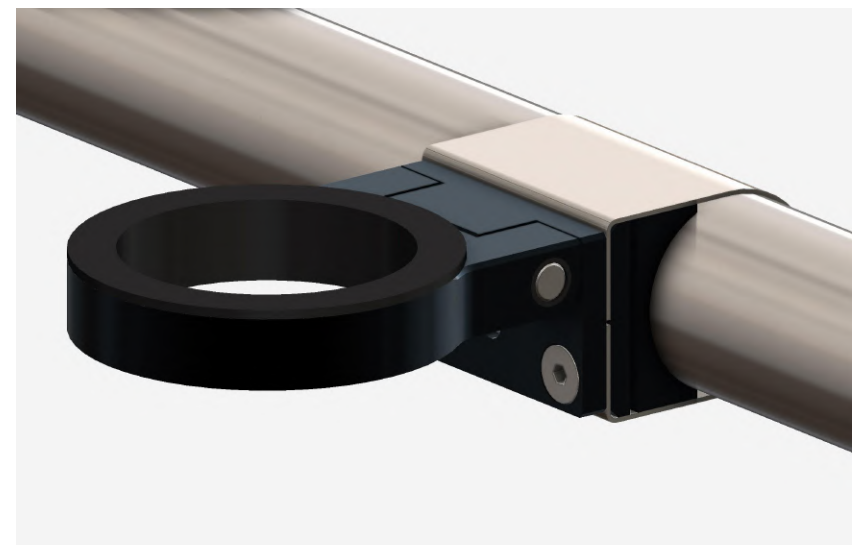
Hard anodized Bulkhead fitting, deployed



Hard anodized Bulkhead fitting, folded



Hard anodized Handrail fitting, deployed

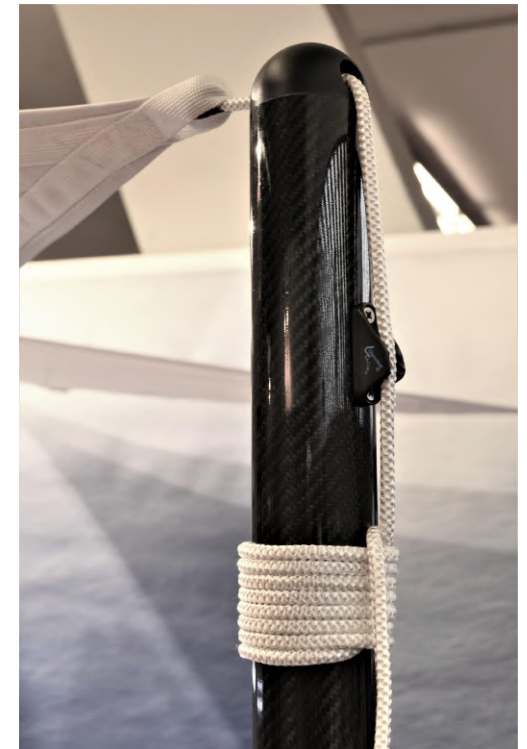
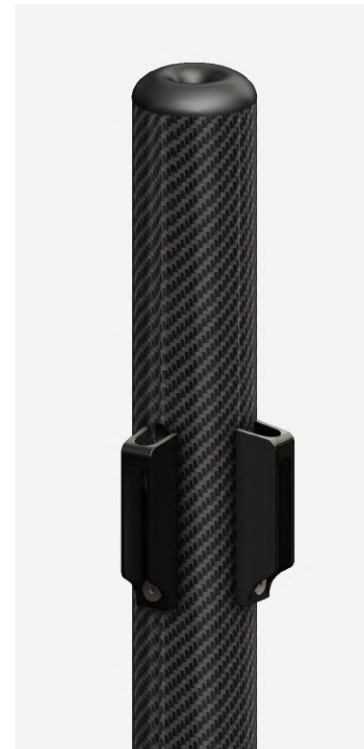


Sun Awning Poles combine strength and beauty

✓ **Select how to attach your awning:** a simple eye-bolt on top, if the tape has adjustable length, or with a Clamcleat® on the side with external or internal rope. On bigger models you can also control 2 ropes to connect 2 awnings to the same pole.

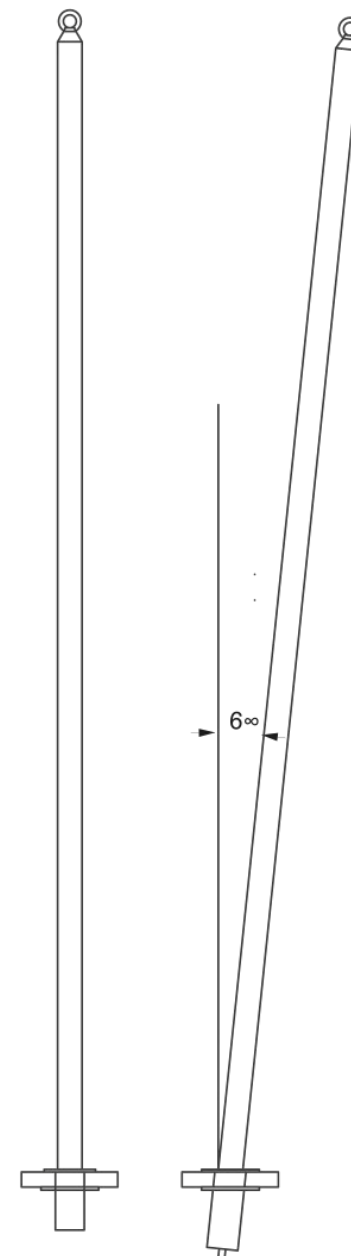
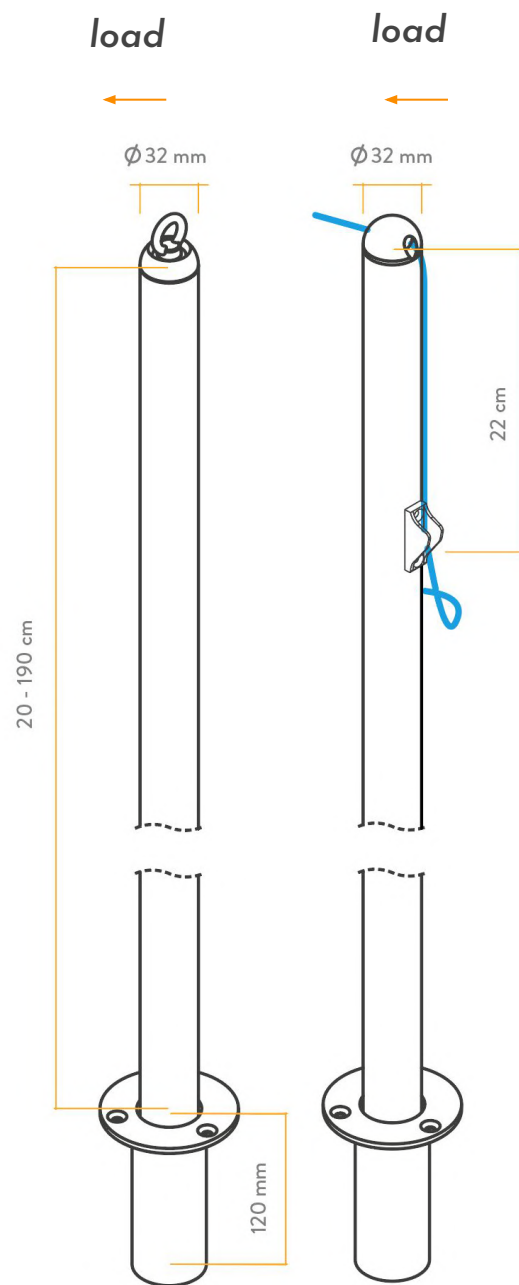


✓ **How the rope works:** the rope has a polymer ball on one end, and the awning has a tape loop. The loop has just enough slack for the ball to be pushed easily through with your hands, but when you tighten the rope, the ball is locked inside the loop. Then you can easily control the tension of the awning by pulling the other end of the rope, using the Clamcleat® to lock it.



MAX SIDE LOAD ON TOP OF THE POLE

	32	38	60	80
110 cm	55 kg	79 kg	210 kg	550 kg
120 cm	50 kg	73 kg	193 kg	500 kg
130 cm	46 kg	67 kg	178 kg	460 kg
140 cm	43 kg	63 kg	164 kg	430 kg
150 cm	40 kg	58 kg	154 kg	400 kg
160 cm	38 kg	55 kg	144 kg	375 kg
170 cm	36 kg	52 kg	136 kg	350 kg
180 cm	34 kg	49 kg	128 kg	330 kg
190 cm	32 kg	46 kg	121 kg	315 kg
200 cm		44 kg	115 kg	300 kg
210 cm			110 kg	285 kg
220 cm			105 kg	270 kg
230 cm			100 kg	260 kg



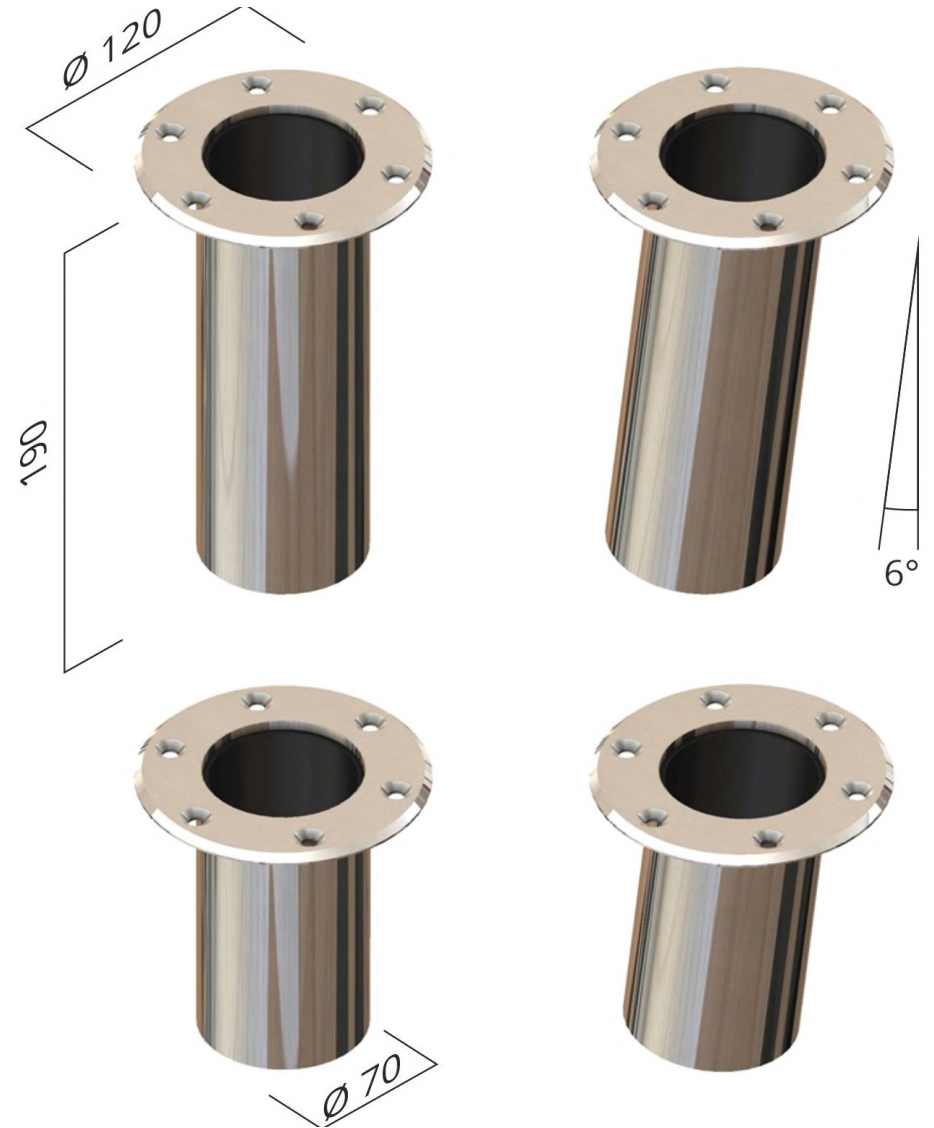
Female deck sockets

Fittings

Exit Carbon offers a large variety of **female deck sockets**. Flanges are 4 mm thick and quite wide, to distribute the load on a bigger deck surface. The 190mm deep models are the standard socket for this pole, either vertical or with a 6° angle. We provide also shorter variants, when it's impractical to install a deeper socket, but we don't advise to use the shorter sockets for poles taller than 170cm.

All sockets come with an impeccable highly-polished deck flange and are lined with a protective polymer sleeve.

Notice: All sockets, except for the 90 mm deep ones (Helios 32 and Helios 38), present a threaded hole in the bottom to drain water and allow the installation of optional features. Check the sockets option page.



Deck sockets options

Socket bottoms

All sockets, except for the 90 mm deep ones (available for Helios 32 and Helios 38) , present a threaded hole in the bottom to drain water as a standard.

The installation of optional features for the bottom of the sockets is possible in different variants.

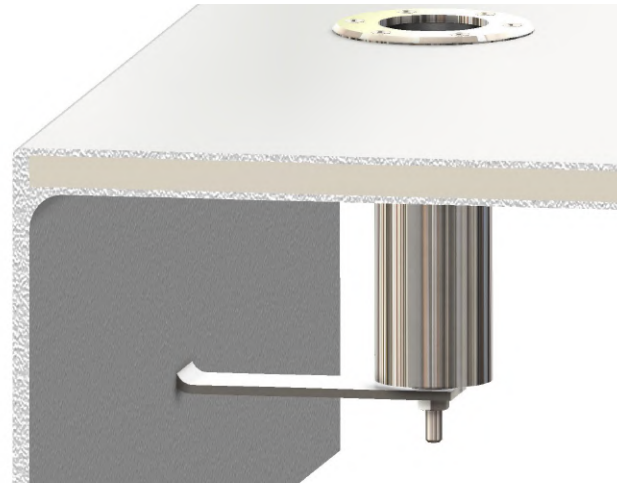
The configuration with drain tube allows to bring the drained water where needed.

The socket can have a closed bottom with the bottom seal, or again it can be even more strongly connected to the deck with the threaded pin version, thought to be used with a lower bracing..

Special deep bracing threaded backing flange

The optional threaded backing flange substitutes separate nuts and washers for simplified and stronger fitting of the socket to the deck and they are available for any socket except the 90 mm deep ones (Helios 32 and Helios 38).

Only for Helios 60, it also is available a special deep bracing threaded backing flange for still stronger hold.



Options

Stainless steel backing flange

Simplify the fitting of the female deck sockets with this strong, stainless steel counter-flange with threaded holes. Instead of using nuts with wide washers to be individually tightened, awkwardly holding your key below deck, use this single counter-flange. It distributes the load better than the widest of washers but, most of all, once you fit the screws into their threaded holes, you won't need to use any key below deck when tightening the screws. Just tighten the screws from the top and the counter-flange will stay locked in place, tightening the deck material along the whole perimeter of the socket.

Practicality and safety, at the same time.



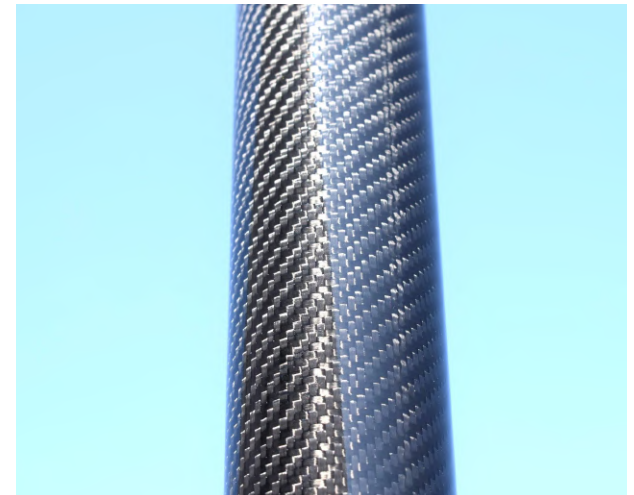
Wall clips

Use our wall clips, made with soft and strong polymer, to hang your Helios poles inside your locker. The long, thin shape, coupled with the light weight of the carbon poles, enables them to stay close to a bulkhead or roof without taking useful space from the locker.



Carbon fabric finishing

Your poles can be completed with a layer of carbon fabric, covered with UV resistant clearcoat. We obtain this with a manual second operation, covering the superstrong pullwinded structure we favor for all our poles, rather than choosing lower tech wrapping solutions.



Options

Paint

The carbon fiber poles come in Exit Carbon's signature carbon look, or a color of your choice, among the mixture of classic boating colors, and soft, modern tones we selected for you. You can also create a completely individual finishing, selecting any color from the whole RAL or Awlgrip palette. See Pricing page for details.



Padded Stow Bag

Provide the best protection for your poles and yacht with our exclusive, light grey Exit Carbon weatherproof padded stow bag. All our bags feature resistant and comfortable handles, individual slots for each pole, shoulder straps, practical zips, and can be customized with your logo or yacht name.

Each can carry 2 to 6 poles for Helios 32 and 38; 2 to 4 poles for Helios 60 and 80.



Sun Awnings Poles with eye-bolt

LENGTH

20 cm (8")

30 cm (10")

40 cm (14")

50 cm (20")

60 cm (2')

70 cm (28")

80 cm (32")

90 cm (3')

100 cm (3' 3")

110 cm (3' 7")

120 cm (3' 11")

130 cm (4' 3")

140 cm (4' 7")

150 cm (4' 11")

160 cm (5' 3")

170 cm (5' 7")

180 cm (5' 11")

190 cm (6' 3")

200 cm (6' 7")

210 cm (6' 11")

220 cm (7' 3")

230 cm (7' 7")

Clamcleat® with rope running outside

Clamcleat® with rope running inside

Poles Padded Stow bag

CONFIGURATION AND FINISHING

Special reinforcements on stressed sections and Clamcleat® fitting. No screws on carbon.

Optional Clamcleat ® rope fitting, both internal and external

Vertical or angled mount (see sockets options)

High-gloss, UV resistant carbon fiber visible finishing with clearcoat

Optional Carbon fabric finishing, with clearcoat (see options below)

AVAILABLE LENGTHS AND PRICES

HELIOS 32	HELIOS 38	HELIOS 60	HELIOS 80
€236	€278	€404	€745
€247	€295	€423	€781
€258	€312	€442	€817
€269	€329	€461	€853
€280	€346	€480	€889
€291	€363	€499	€925
€302	€380	€518	€961
€313	€397	€537	€997
€324	€414	€556	€1,033
€335	€431	€575	€1,069
€346	€448	€594	€1,105
-	€465	€613	€1,141
-	-	€632	€1,177
-	-	€651	€1,213
-	-	€670	€1,249
Extra lengths on request.			
€ 121	€ 132	€ 148	€210
-	€ 148	€170	€210
€236-€324	€264-€376	€286-€465	€308-€515

*Prices in Euro. VAT and shipping not included.

©Exit Engineering 2022

HELIOS Sockets and fittings

		PRICE
H32	90 mm deep vertical stainless steel or black hard anodized aluminium female socket (1)	€110
H38	90 mm deep vertical stainless steel or black hard anodized aluminium female socket (1)	€137
H32	120 mm deep vertical stainless steel female socket	€187
H32	120 mm deep 6° angled stainless steel female socket	€203
H38	120 mm deep vertical stainless steel female socket	€187
H38	120 mm deep 6° angled stainless steel female socket	€203
H60	120 mm deep vertical stainless steel female socket	€280
H60	120 mm deep 6° angled stainless steel female socket	€297
H60	190 mm deep vertical stainless steel female socket	€324
H60	190 mm deep 6° angled stainless steel female socket	€341
H80	270 mm deep vertical stainless steel female socket	€423
H38/H60	Bulkhead fitting for Helios 38/60	€165
H38/H60	Handrail fitting for Helios 38/60	€187
H80	Helios Link handrail support for Helios 80	€910
H80	Helios Link fitting base for Helios 80	€610

All our sockets are supplied with highly polished outer flanges and polymer sleeves to avoid metal-on-carbon contact.

(1) Only available with sealed bottom, without possibility of water drain or bottom screw.

HELIOS Accessories

		PRICE
all	Bottom seal for socket	€16
all	Drain tube fitting for socket	€22
all	Bottom screw for additional bracket for socket	€28
H32/38	stainless steel backing flange (threaded)	€39
H60	stainless steel backing flange (threaded)	€55
H80	stainless steel backing flange (threaded)	€110
<i>Substitutes separate nuts and washers for simplified and stronger fitting of the socket to the deck. The stainless steel backing flange is very convenient for easy assembly and optimal load distribution on an extended deck surface. The flange has threaded holes that correspond with the top flange holes, so no nuts are needed.</i>		
H60	Helios 60 deck socket deep bracing threaded backing flange	€ 225
<i>Increases the stiffness of the socket, helping to distribute the bending load on an appropriately wide deck area.</i>		
H32	Flush cap for vertical socket	€39
H32	Flush cap for 6° angle socket	€60
H38	Flush cap for vertical socket	€44
H38	Flush cap for 6° angle socket	€66
H60	Flush cap for vertical socket	€66
H60	Flush cap for 6° angle socket	€94
H80	Flush socket cap	€110
H32	Storage clip pair	€19
H38	Storage clip pair	€24
H60	Storage clip pair	€50
all	Awning black bag <i>Soltis Serge Ferrari</i>	€160
all	Bag Yacht Name	€82

HELIOS finishing options

	HELIOS 32	HELIOS 38	HELIOS 60	HELIOS 80
Carbon fabric + clearcoat	+€ 132	+ € 170	+ € 220	+ € 363
Matt UV Resistant Transparent Paint	€ 100		€ 130	
Choices of color <i>Slate Grey - Whisper Grey - Platinum Grey - Silk Grey - Oyster White - Off White - Snow White - Ochre Brown - Grey Beige - Desert Sand - Pebble Grey - Majestic Blue - Cobalt Blue- Aristo Blue - Navy Blue - Royal Blue. For even more colors, ask a quote.</i>	€ 130	€ 160	€ 210	€ 260

www.exitcarbon.com

EXIT CARBON IS MANUFACTURED

by **EXIT ENGINEERING**

For more details, please send us an email at info@exitcarbon.com

HEADQUARTERS

Via Industria, 43 30010 - Camponogara (VE) Italy - +39 041 89 48 038

