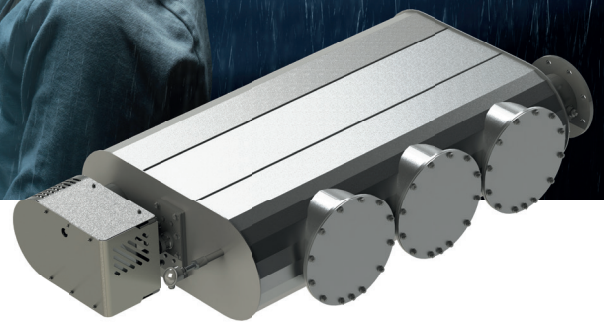


XEAMOS

Zero Soot FB

Reducing emissions together



Zero Soot FB

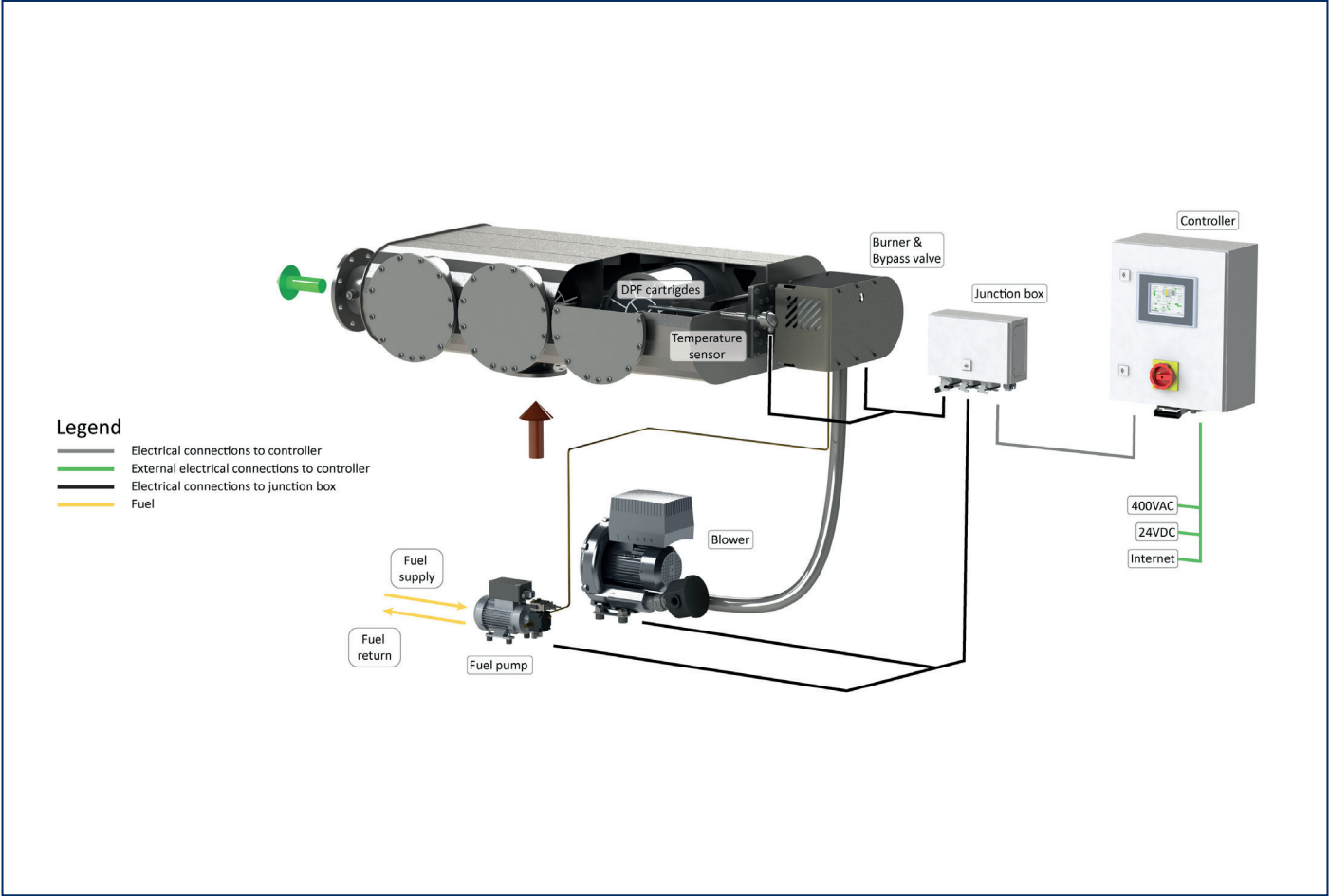
Our Zero Soot FB (Fuel Burner) offers most reliable reduction of harmful emissions of your auxiliary diesel engine under all circumstances. Your generators will be clean, without soot!

The particle filters collect the soot particles from the exhaust stream. A high grade catalytic coating suitable for potentially sulphur containing fuels, minimizes the regeneration temperature and reduces Hydro Carbons and Carbon Monoxide.

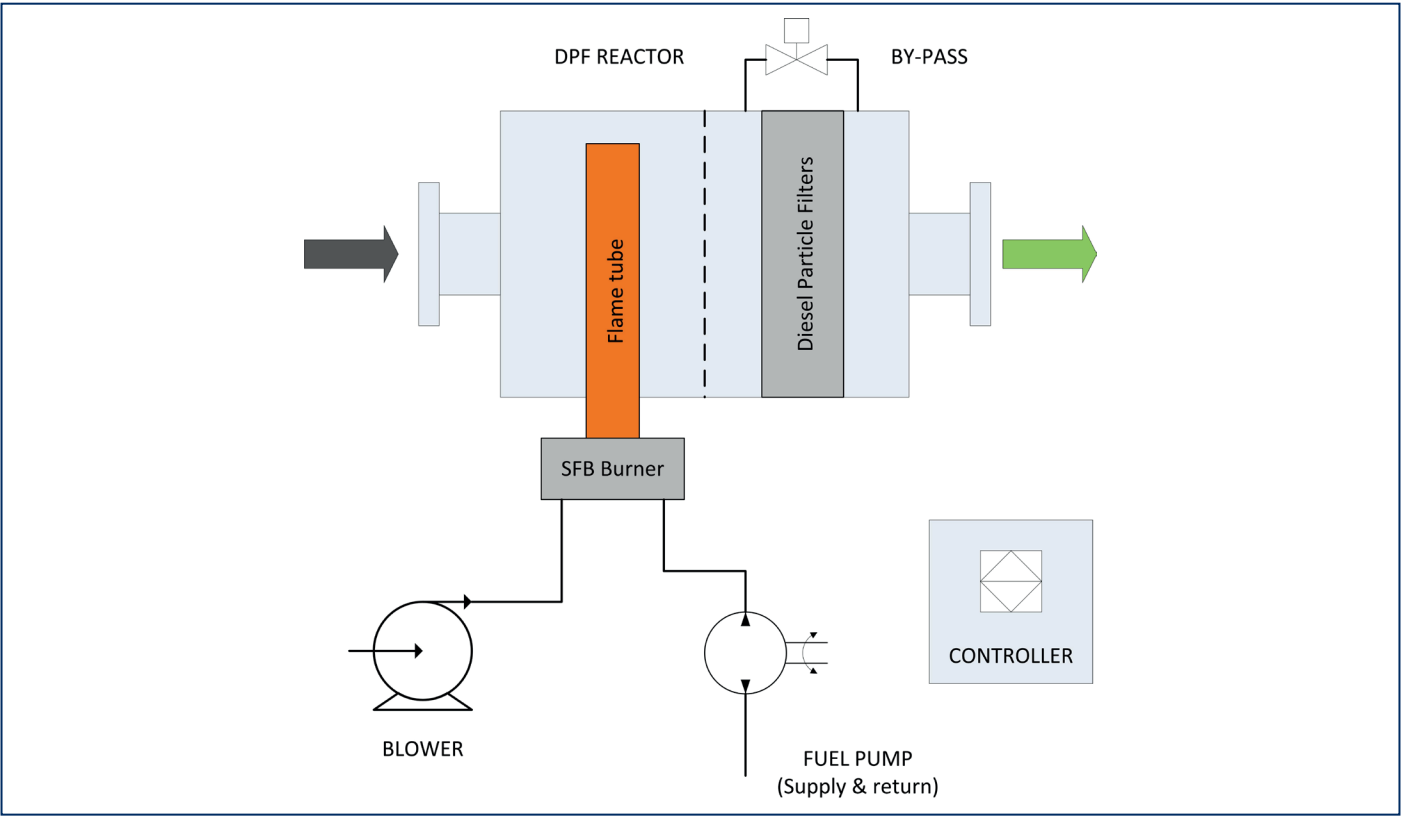
- An automatic safety bypass allows 100% engine availability.
- In practice VIP guests will not experience particulates on deck, common diesel fuel in swimming water and the smell of diesel fuel.
- Compact size. Designed for low installation height.
- Fuel burner regenerated.
- The intelligent PLC controlled regeneration system ensures a trouble-free operation of your filter system.

Main Features

- Compact design.
- Air supply pump included.
- Active regeneration fuel burner system.
- Lloyd's Register approved.
- By-pass valve for 100% engine availability.
- Integrated sound attenuation function.
- Advanced controller.



Lay-out of a Zero Soot FB system.



Process schematic of a Zero Soot FB system.

Operational conditions

Application	Super yachts and inland navigation
Exhaust system	Suitable for dry or wet systems
Environment	Engine room, clean
Ambient Temperature	-20 + 55°C
Degree of Protection	IP55
Relative humidity	5 to 95% Non-condensing
Inspection & service interval	Approximately 1x per year (normal conditions)

Supplies

Fuel	EN590 (Diesel), DMA, DMX, max 2000 ppm sulphur
AC Power supply	3 x 400 VAC (4 wire)
DC Power supply	24 VDC - 10A (uninterrupted)

Design data

Materials	Reactor housing: Alloy steel Burner tube and shields: High heat resistant steel
Temperature	Regeneration temperature up to 520°C
Surface treatment	Welds brushed
Pressure drop (ΔP)	Approximately 20-30 mbar, clean without soot and ash
DPF type	SiSiC
Coating	BM, SX, ZX (ULSF only)
By-pass valve	Standard internal, electrically operated
Supports	Bottom, standard, optional top
Thermal insulation	Blankets or cladded insulation (by customer)

Legal requirements and standards

Standards	EMC directive 2014/30/EU Machinery directive 2006/42/EC Low voltage directive 2014/35/EU Thermo processing EN 746-2
Classification	Lloyds Register

System parts

Controller	PLC with full colour HMI, super yacht standard (acc. to LR requirements) - Inputs: engine load, engine on - Outputs: System ON, Alarm, MOD bus - Datalogging - Remote access prepared
Blower unit	Blower with 3 phase motor with FC drive, air filter, check valve, filter service switch
Burner	Fuel burner with flame detection and ignition
Fuel set	Fuel pump with shut-off valves
Sensors	Temperature & pressure transmitter
Wiring	Connectors, wiring by yard

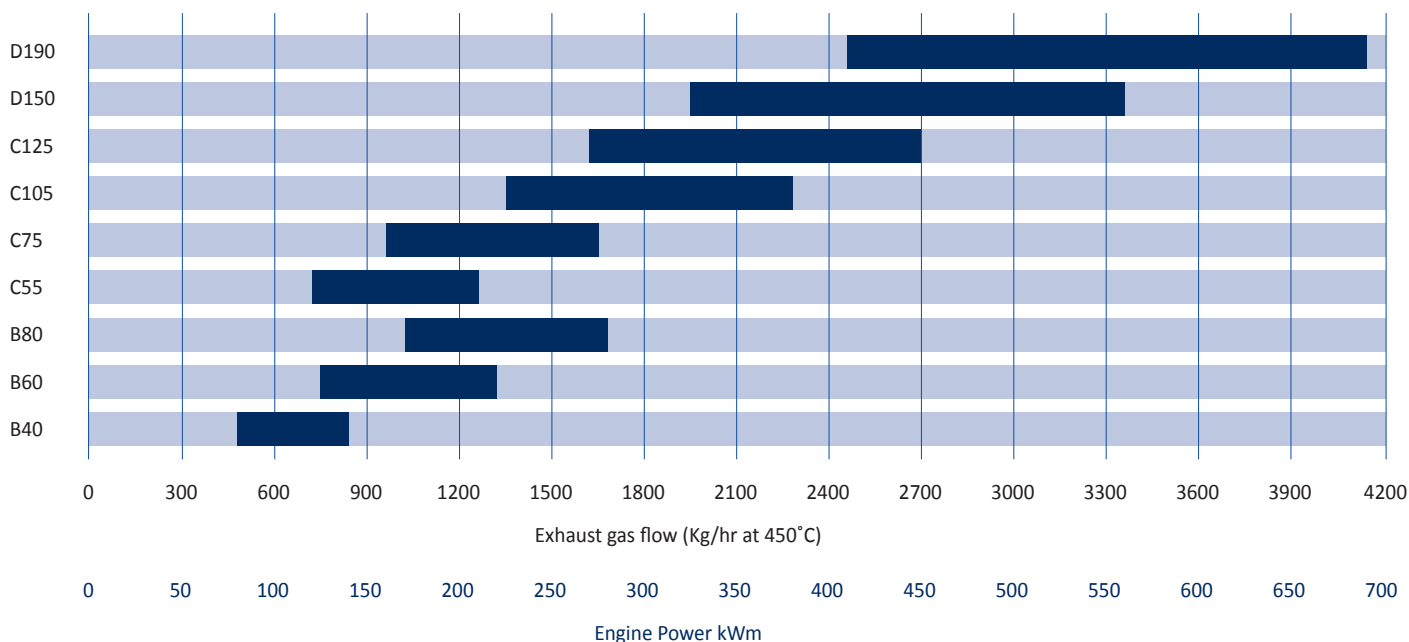
Performance

PM (measured as PM 10)	> 97% reduction
Sound attenuation	ca. 30 dB(A)

Optional

- Harbour mode for optimized reduction of HC (diesel smell and oil deposits)
- Alternative catalytic coating
- NOx sensor for optimized control and actual NOx value
- Remote access via LAN accessible for diagnostics/remote services

Zero Soot FB

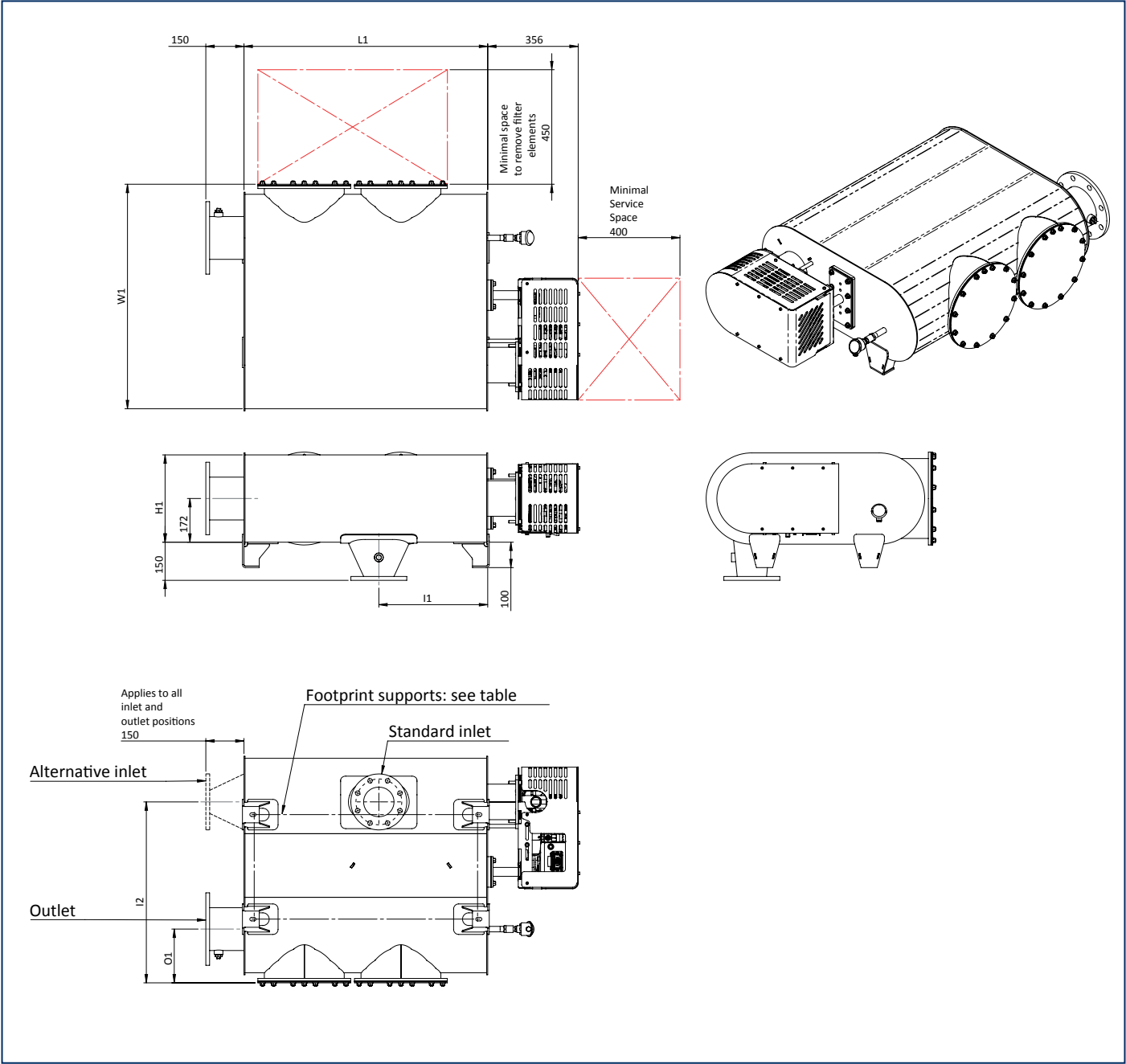


For indication only, please contact us for exact unit selection or custom solutions. Bar in graph corresponds with 20 - 30 mbar pressure drop

Dimensions & options B series left

Type	DPF volume	Flanges EN1092 PN10		Hot surface	L1	W1	H1	H2	I1	I1	O1	Weight
	liter	In	Out	m2	mm	mm	mm	mm	mm	mm	mm	kg
B40	39	DN100	DN150	2,5	960	885	343	-	530	710	210	245
B60	59	DN100	DN150	3,3	1340	885	343	-	720	710	210	320
B80	78	DN150	DN200	4,1	1750	885	343	-	910	710	210	405

Service space for burner is 400 mm. Service space to remove soot filter elements is 450 mm.

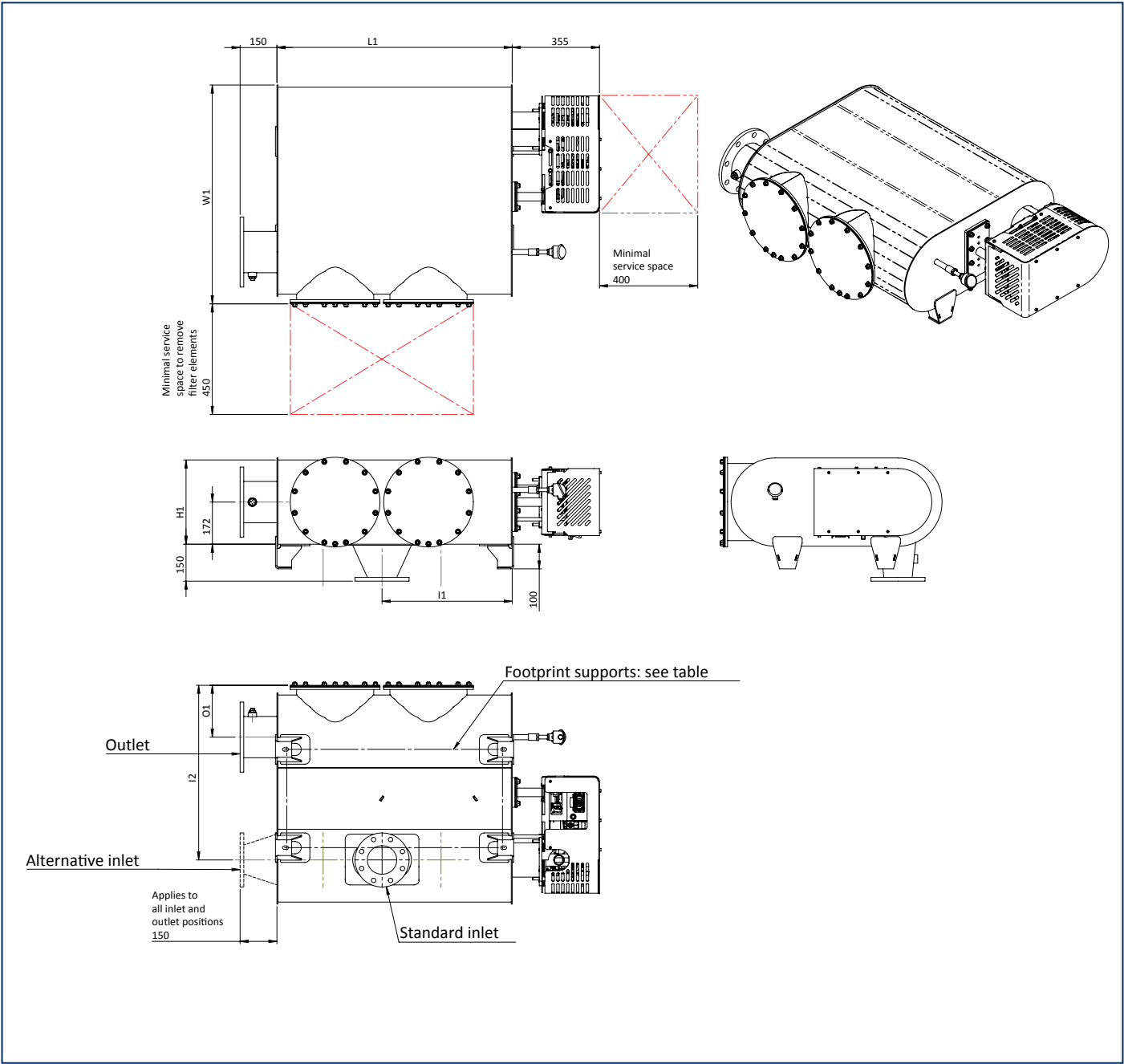


Note: This drawing is preliminary & provided for reference only and is not intended for installation purpose. Contact us either your local distributor for detailed information.

Dimensions & options B series right

Type	DPF volume	Flanges EN1092 PN10		Hot surface	L1	W1	H1	H2	I1	I1	O1	Weight
	liter	In	Out	m2	mm	mm	mm	mm	mm	mm	mm	kg
B40	39	DN100	DN150	2,5	960	885	343	-	530	710	210	245
B60	59	DN100	DN150	3,3	1340	885	343	-	720	710	210	320
B80	78	DN150	DN200	4,1	1750	885	343	-	910	710	210	405

Service space for burner is 400 mm. Service space to remove soot filter elements is 450 mm.

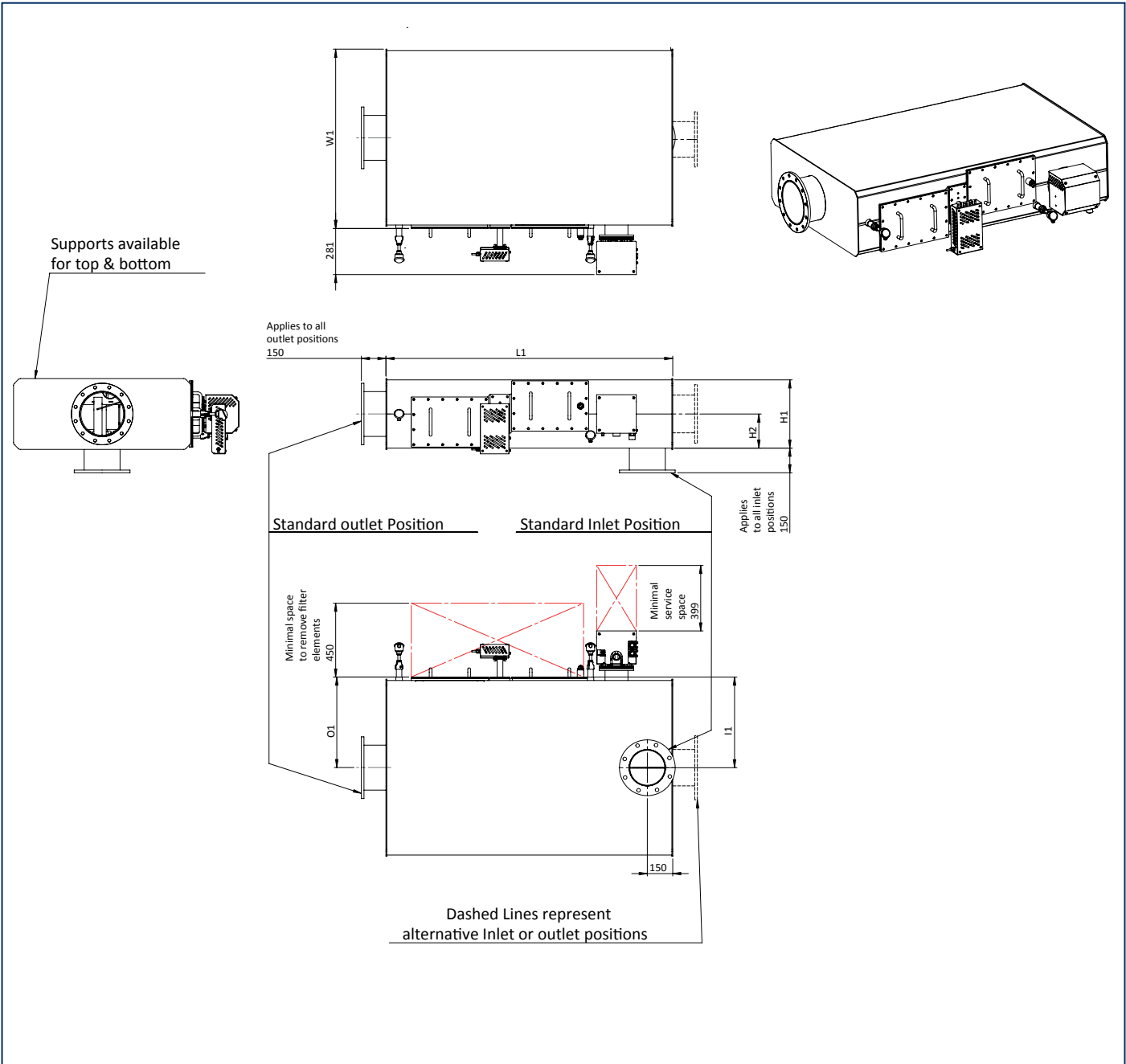


Note: This drawing is preliminary & provided for reference only and is not intended for installation purpose. Contact us either your local distributor for detailed information.

Dimensions & options C/D series left¹

Type	DPF volume liter	Flanges EN1092 PN10		Hot surface m²	L1 mm	W1 mm	H1 mm	H2 mm	I1 mm	I1 mm	O1 mm	Weight kg
		In	Out									
C55	57	DN150	DN150	3,7	1750	525	420	210	270	-	270	320
C75	76	DN150	DN200	4,4	1750	670	420	210	345	-	345	390
C105	104	DN150	DN200	5,4	1750	915	420	210	465	-	465	500
C125	123	DN200	DN250	6,1	1750	1085	420	210	550	-	550	560
D150	152	DN200	DN250	6,2	1750	1010	490	245	515	-	515	600
D190	190	DN250	DN300	7,3	1750	1255	490	245	635	-	635	720

¹ option outlet on top, bottom and side: length = L2 +80 mm. Service space for burner is 400 mm.
Service space to remove soot filter elements is 450 mm.

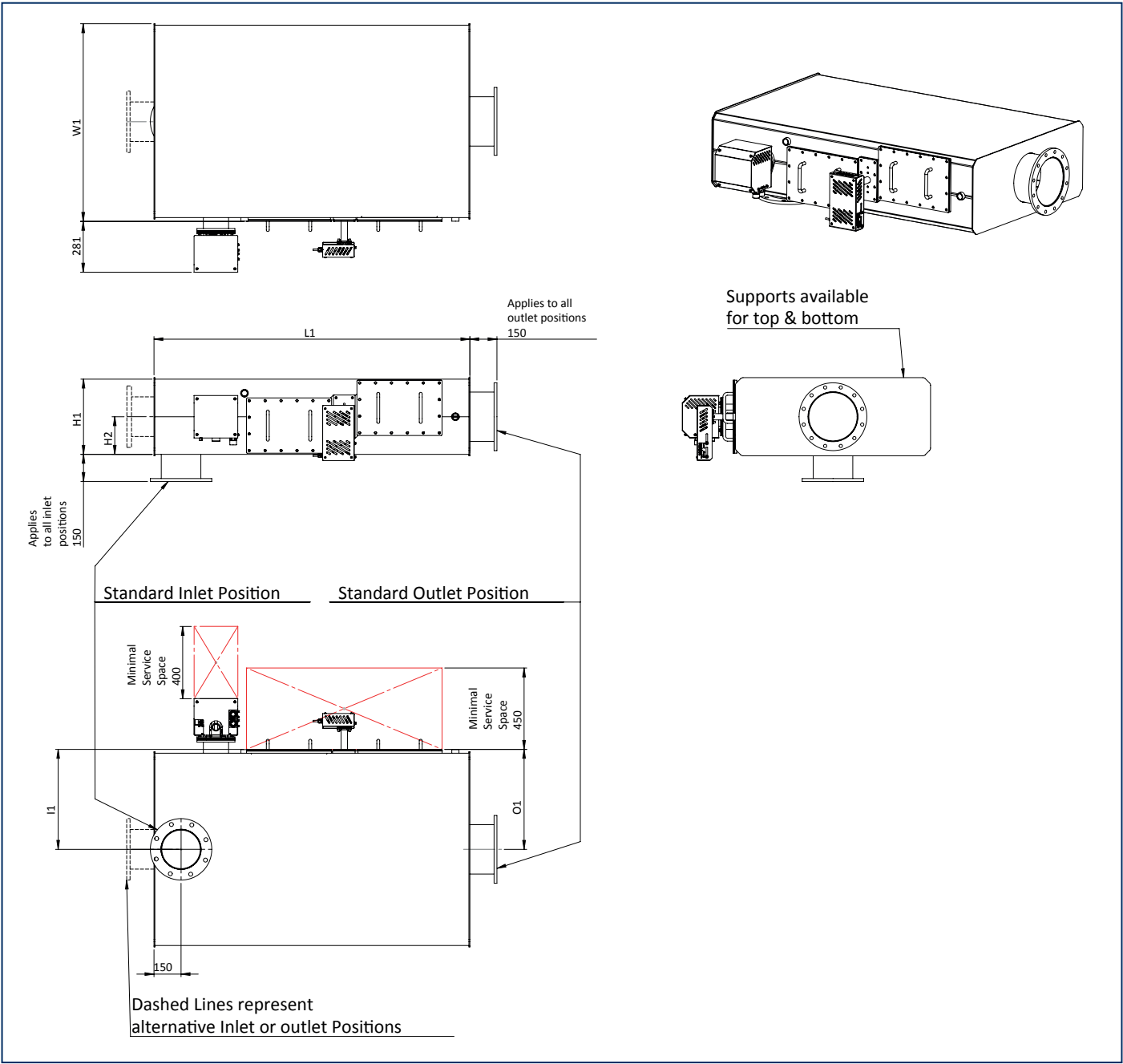


Note: This drawing is preliminary & provided for reference only and is not intended for installation purpose.
Contact us either your local distributor for detailed information.

Dimensions & options C/D series right¹

Type	DPF volume liter	Flanges EN1092 PN10		Hot surface m²	L1 mm	W1 mm	H1 mm	H2 mm	I1 mm	I1 mm	O1 mm	Weight kg
		In	Out									
C55	57	DN150	DN150	3,7	1750	525	420	210	270	-	270	320
C75	76	DN150	DN200	4,4	1750	670	420	210	345	-	345	390
C105	104	DN150	DN200	5,4	1750	915	420	210	465	-	465	500
C125	123	DN200	DN250	6,1	1750	1085	420	210	550	-	550	560
D150	152	DN200	DN250	6,2	1750	1010	490	245	515	-	515	600
D190	190	DN250	DN300	7,3	1750	1255	490	245	635	-	635	720

¹ option outlet on top, bottom and side: length = L2 +80 mm. Service space for burner is 400 mm.
Service space to remove soot filter elements is 450 mm.



Note: This drawing is preliminary & provided for reference only and is not intended for installation purpose.
Contact us either your local distributor for detailed information.

