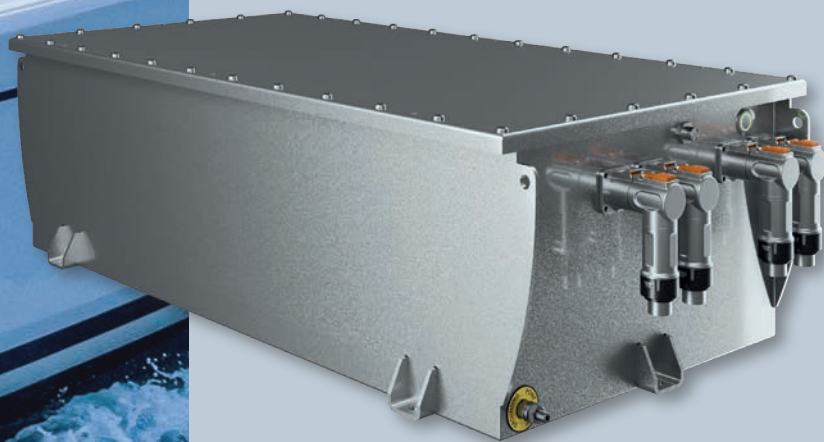


ENERGY  
POWER  
TECHNOLOGIES



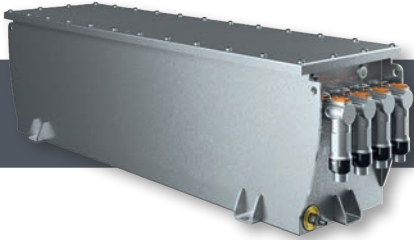
LV-LITHIUM  
BATTERIES

[www.eptechnologies.de](http://www.eptechnologies.de)

**EPT**Technologies  
Energy Power Technologies

**EPTechnologies** has developed superior high quality, energy dense and extremely robust lithium batteries. EPT lithium batteries are available in two different technologies, LFP, SolidState in 24 V and 48 V. The batteries have a nominal capacity from 7,1 kWh to 16,1 kWh.

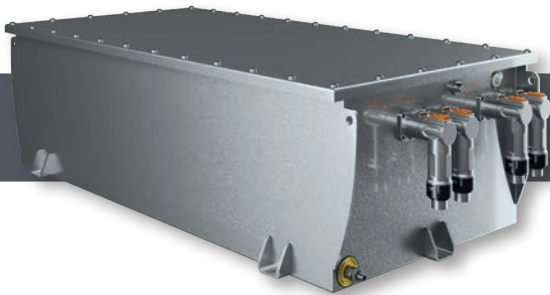
Thanks to its unique combination of advanced technology and smart software, EPT batteries are robust, safe and user-friendly. The battery is compact, efficient, maintenance free and safely performing.



## EPT 24 V LiFePO4 Battery

- Nominal 25.6 VDC
- Capacity 8 kWh
- Max continues charge 310 A / 1C
- Max continues discharge 500 A / 1.6 C
- Cycle life 7000 80% DOD
- Stainless steel enclosure, 54 kg, IP65, 810 x 220 x 250mm
- 2 years warranty, CE certified, UN 38.3

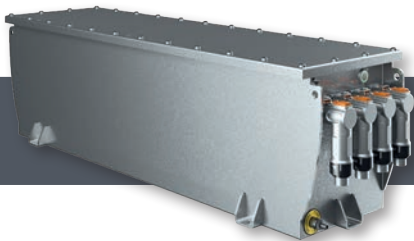
**Order No.: EPT95101**



## EPT 48 V LiFePO4 Battery

- Nominal 51.2 VDC
- Capacity 16.1 kWh
- Max continues charge 310 A / 1 C
- Max continues discharge 500 A / 1.6 C
- Cycle life 7000 80% DOD
- Stainless steel enclosure, 102 kg, IP65, 810 x 425 x 250mm
- 2 years warranty, CE certified, UN 38.3

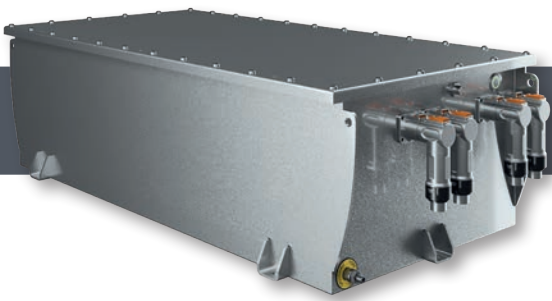
**Order no.: EPT95102**



## EPT 24 V SolidState Battery

- Nominal 25.6 VDC
- Capacity 7.1 kWh
- Max continues charge 220 A / 0.8 C
- Max continues discharge 330 A / 1.2 C
- Cycle life 10000 80% DOD
- Stainless steel enclosure, 54 kg, IP65, 810 x 220 x 250mm
- 2 years warranty, CE certified, UN 38.3

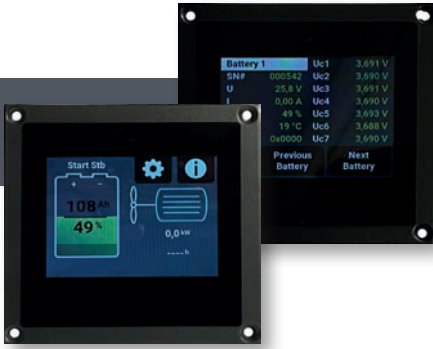
**Order no.: EPT95103**



## EPT 48 V SolidState Battery

- Nominal 51.2 VDC
- Capacity 14.3 kWh
- Max continues charge 220 A / 0.8 C
- Max continues discharge 330 A / 1.2 C
- Cycle life 10000 80% DOD
- Stainless steel enclosure, 102 kg, IP65, 810 x 425 x 250 mm
- 2 years warranty, CE certified, UN 38.3

**Order no.: EPT95104**



## Display/NMEA2000

**LBM:** 3,5" touch screen, max. 16 batteries parallel, 16 x 2 serial

**Order No.: 901-071004300**

**PSL:** 5" touch screen, max 24 batteries parallel, 24 x 2 serial  
Comes with CBO interface (set).

**Order No.: 901-13800PC**

**CAN to NMEA2000** converter incl. Raymarine Axion 7" & 9" Software

**Order No.: 901-13800RA**

**CAN to NMEA 2000** converter for boat control

**Order No.: 901-13800BC**



## PACKCONTROL

PackControl is engineered to support 24 V and 48 V LiFePO4 and SolidState battery systems, offering versatile solutions for a variety of marine energy applications. Capable of connecting and managing up to 14 batteries simultaneously, it is perfectly suited for large-scale energy storage needs on marine vessels, ensuring streamlined and centralized oversight of the entire battery network.

The system provides comprehensive performance monitoring, allowing you to track detailed metrics for each individual battery while maintaining an overview of the whole setup. With intelligent load management, PackControl optimizes energy distribution and allows precise control of individual battery loads. Real-time alerts and notifications keep you informed about battery health, performance, and critical events, ensuring you stay updated and in control, even in the most demanding marine environments.







Powered by  
**EPTechnologies**  
 Energy Power Technologies

GERMANY

**EPTechnologies GmbH**

Senefelder Ring 51  
 21465 Reinbek  
 Germany  
 Sales: +45 30 209 694  
 sales@epttechnologies.de  
 www.epttechnologies.de

DENMARK

**EPTechnologies Aps**

Jyllandsgade 17  
 6400 Sønderborg  
 Denmark  
 Sales: +45 30 209 694  
 sales@epttechnologies.dk  
 www.epttechnologies.dk



The copyright for published objects created by the author himself remains solely with the author of the pages. Any duplication or use of such graphics, sound documents, video sequences and texts in other electronic or printed publications is not permitted without the express consent of the author.