

# Testfiltration Plants for Rental

**ACT NOW -**  
take your chance  
to test quality  
technology

## TESTFILTRATION PLANTS FOR RENTAL

Do you have a challenging filtration task? Are you looking for a highly efficient filtration process? Then take the opportunity and test Dynamic Crossflow Filtration.

This technique uses rotating ceramic membrane discs, resulting in extreme crossflow velocities with very low energy consumption at the same time. This combines the best material with the most efficient process.

### There is a wide range of applications:

in the treatment of waste and process water, in the processing of digester effluents and microorganisms, in the food and beverage industry as well as in the chemical and pharmaceutical industry and many more.

To help you to convince yourself of the advantages of Dynamic Crossflow Filtration, KERAFOL® offers two types of test plants for rental. This allows you to carry out initial tests and gain first experience with the technology.

## ADVANTAGES OF THE SMALL PLANT (0.1 m<sup>2</sup>)

- Ideal for first laboratory scale tests
- Simple manual operation
- Only small amounts of feed material needed
- Fast change of discs  
(testing of different pore sizes)



## ADVANTAGES OF THE BIG PLANT (2 m<sup>2</sup>)

- Ideal for simulation of a production scale
- Easy operation via touchpad
- Automatic or manual operation
- Various setting options
- Automatic emptying at desired concentration level
- Equipping with fewer discs possible



### Are you interested?

Then do not hesitate and contact the membrane experts from KERAFOL®. We will be happy to advise you on all possible applications.

KERAFOL® offers two types of test plants for rental. This allows you to carry out initial tests yourself and convince yourself of the advantages of Dynamic Crossflow Filtration.

## TECHNICAL DATA COMPARISON

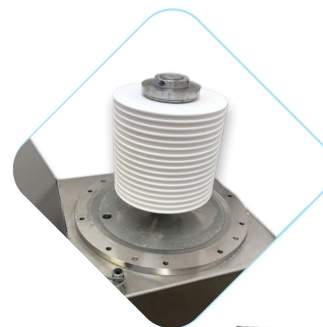
General Data		Small plant (0.1 m²)	Big plant (2 m²)
Length		750 mm	1535 mm
With		404 mm	600 mm
Height		560 mm	1535 mm
Weight		Approx. 75 kg (incl. discs)	Approx. 380 kg (incl. discs)
Connections	Feed	13 mm	Feed DN25
	Concentrate	13 mm	Concentrate DN25
	Filtrate	6 mm	Filtrate DN25
	Overflow	13 mm	Overflow DN25
Dead volume		Approx. 1.5 L	Approx. 60 L
Filtration area			
Size of the discs		Ø 152 mm	Ø 312 mm
Number of discs		3	Up to 16
Membrane area		0.1 m²	Up to 2.1 m²
Electricity			
Voltage		230 V	400 V
Frequency		50 Hz	50 Hz
Connected Load		0.75 kW	5.5 kW
Pneumatic			
Connecting pressure		6 bar, dry, clean	6 bar, dry, clean

### Disclaimer

The information provided in this Technical Data Sheet (TDS) including the recommendations for use and application of the product are based on the producers' knowledge and experience of the product, non-binding and are explicitly not an expressly warranted characteristic of the goods. Due to technological developments related to products and systems, the data and procedures are subject to change without notice. The product can have a variety of different applications, as well as differing application and working conditions in the buyer's environment that are beyond Kerafol's control. Therefore, Kerafol is not liable for the suitability of the product for the prospective users' production processes and conditions in which the user uses them, as well as intended applications and results. Kerafol strongly recommends that the user carries out own prior tests to confirm such suitability of the product and that each prospective user tests his proposed application before repetitive use. It is the buyers'/users' responsibility to verify compatibility, fitness and suitability of the product with the specific use / application. Any liability in respect of the information in the Technical Data Sheet or any other written or oral recommendation(s) regarding the concerned product is excluded, except if otherwise explicitly agreed and except in relation to death or personal injury caused by our negligence and any liability under any applicable mandatory product liability law. In case Kerafol would be nevertheless held liable, on whatever legal ground, Kerafol's liability will in no event exceed the amount of the concerned delivery. All Kerafol products are sold pursuant to the Kerafol's Terms and Conditions of sale and delivery in effect. A copy of these will be furnished upon request.



**SMALL PLANT**  
(0.1 m²)



**BIG PLANT**  
(2 m²)

