



**PEAK**  
**WATERMAKERS**

Made in Germany





## PEAK Watermakers - Water in its purest form

The watermakers manufactured in Germany impress with their ultra-space-saving, box-shaped design. Thanks to a modern energy recovery system, energy consumption is reduced by up to 70% compared to conventional high-pressure systems. High-quality titanium components complete this first-class overall package.

The system consists of the desalination unit (ERS with membranes), pump unit with control panel, and filter units (pre-filter, activated carbon filter, and sediment filter). Thanks to the new and unique rectangular design of the desalination device and the modular structure of the other components, extremely space-efficient installation is possible.

### Key Facts

**Ultra-compact, box shaped design**  
for optimal use of space

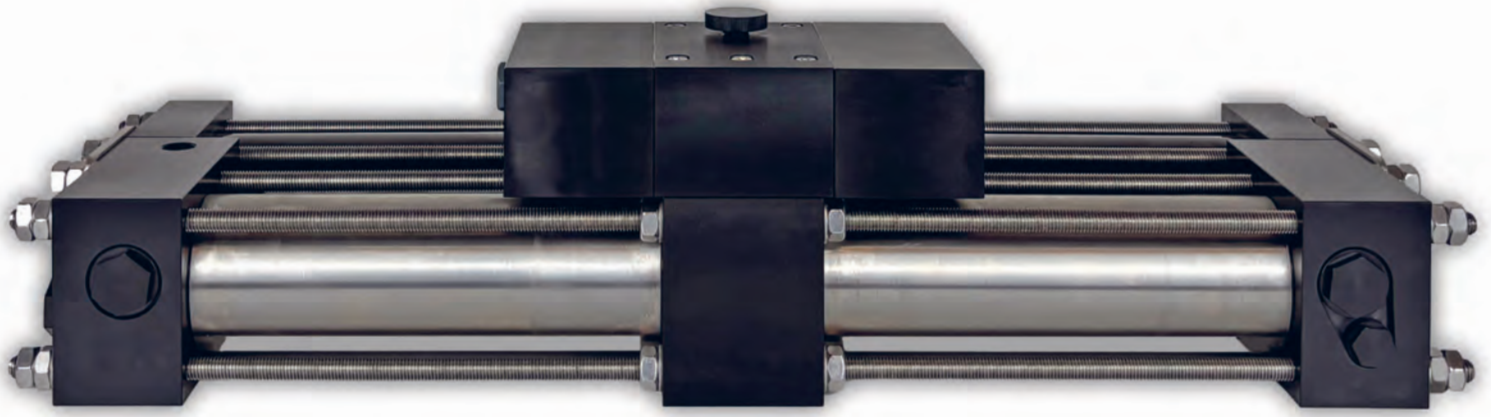
**High energy efficiency**  
thanks to innovative  
energy recovery system

**Extremely quiet operation**  
thanks to precisely tuned  
energy recovery and rotary pump

**High-quality components**  
made of corrosion-resistant titanium,  
with state-of-the-art technology

**Highly advanced product,**  
developed over years by an  
experienced industry team

**Made in Germany**  
with quality and precision



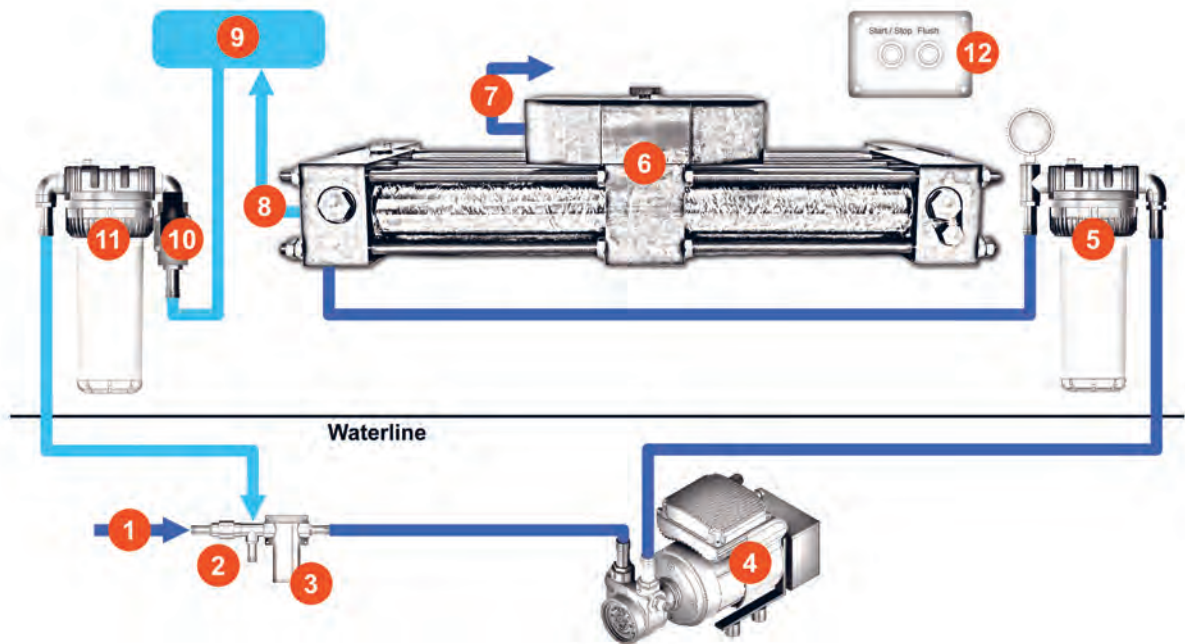
## Technical data

Model	Peak 30	Peak 60	Peak 100	Peak 150
<b>Production output</b>	30 l/h	60 l/h	100 l/h*	150 l/h*
<b>Dimensions LxWxH in mm (watermaker unit)</b>	640 x 200 x 150	640 x 200 x 160	700 x 300 x 300	700 x 300 x 300
<b>Weight watermaker unit**</b>	15 kg	20 kg	40 kg	40 kg
<b>Weight overall package**</b>	40 kg	46 kg	75 kg	78 kg
<b>Energy consumption</b>	<ul style="list-style-type: none"> <li>Light: 110 Watt</li> <li>Comfort / Prime: 240 Watt 140 Watt</li> </ul>		400 Watt	600 Watt
<b>Voltage</b>	12V, 24V, 48V		12V, 24V, 48V, 230V	24V, 48V, 230V
<b>Pump type</b>	<ul style="list-style-type: none"> <li>Light: membrane pump</li> <li>Comfort / Prime: rotation pump</li> </ul>		Rotation pump	
<b>Versions</b>	<ul style="list-style-type: none"> <li>Light</li> <li>Comfort</li> <li>Prime</li> </ul>	<ul style="list-style-type: none"> <li>Light</li> <li>Comfort</li> <li>Prime</li> </ul>	<ul style="list-style-type: none"> <li>Comfort</li> <li>Prime</li> </ul>	<ul style="list-style-type: none"> <li>Comfort</li> <li>Prime</li> </ul>
<b>Features <i>Light</i>:</b>	<b>Control panel:</b> Start, stop, flushing			
<b>Features <i>Comfort</i>:</b>	<b>Control panel:</b> Start, stop, flushing with timer functions, production timer, quality control (TDS) with switch-over			
<b>Features <i>Prime</i> (touch screen):*</b>	<b>Material:</b> Pressure pipe ERS made of Titanium <b>Control panel:</b> Start, stop, flushing with timer functions, production timer, quality control (TDS) with switch-over, operating hours counter digital pressure display, digital flow display			

\* Available from mid-2026

\*\* Slight weight variation depending on model

## Installation scheme



- |                                      |                             |
|--------------------------------------|-----------------------------|
| 1) Seawater inlet                    | 7) Discharge                |
| 2) Non-return valve                  | 8) Produced fresh water     |
| 3) Prefilter                         | 9) Freshwater tank          |
| 4) Pump unit                         | 10) Electro valve           |
| 5) Sediment filter                   | 11) Activated carbon filter |
| 6) Watermaker unit (ERS & membranes) | 12) Control panel           |

Ocean Spring Watermakers e. K.  
Gartenstr. 95/3  
73430 Aalen  
Germany

E-mail: [info@peak-watermakers.com](mailto:info@peak-watermakers.com)  
Phone: +49 1515 0531 832  
Web: [peak-watermakers.com](http://peak-watermakers.com)



**PEAK**  
WATERMAKERS