

PRESS RELEASE

Furuno launches the new software version 4.0 for GPS/WAAS Chartplotter GP1

Furuno Italia is pleased to announce the official launch of the new software version v4.0 of the GP1x71F Chartplotter sounder multifunction display series.

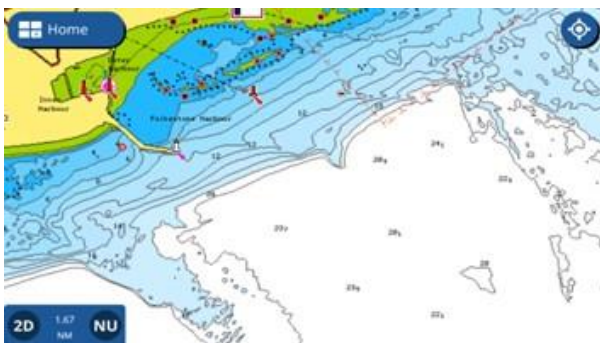
The new version 4.0 of the GP1871F and GP1971F GPS Chartplotters with sounder has many new features and has made improvements to the cartography, plotter, depth sounder and display!

Cartography

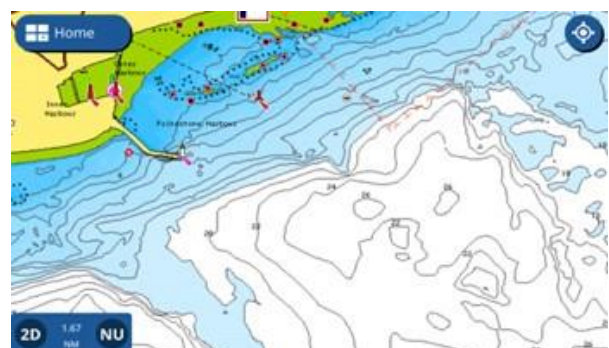
The new software version v4.0 introduces a very important novelty, much requested and awaited by all Furuno fishing enthusiasts: the compatibility of the GP1x71F with Navionics marine charts!

Indeed, Navionics and Furuno have joined forces to release a new software update that makes the Furuno GP-1871F and GP-1971F chart plotters compatible with Navionics+ and Platinum+ charts.

Thanks to Navionics+ charts, end users can take advantage of the Dock-to-dock Route Guidance technology that will allow to automatically create a route by simply entering the departure and arrival points. With the SonarChart™ bathymetry layer, the 1' HD contours will help to understand depths and bottom detail to locate the best fishing areas.

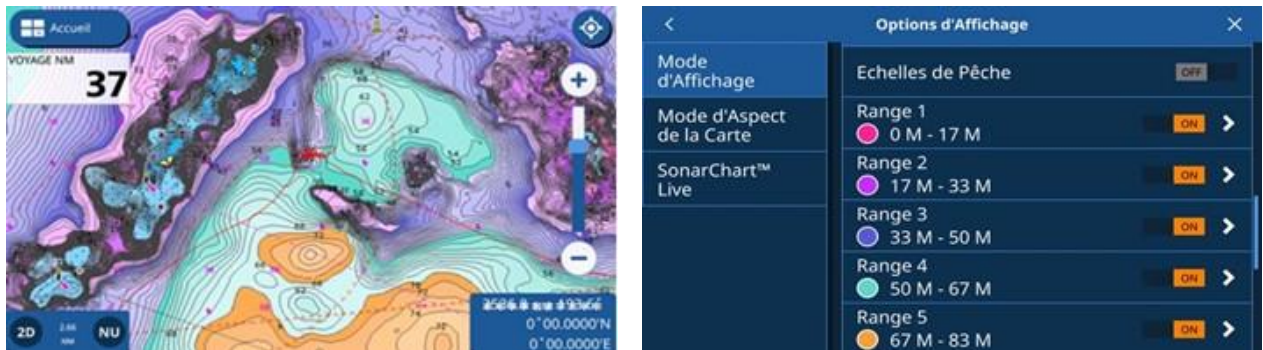


SONARCHART™ ON

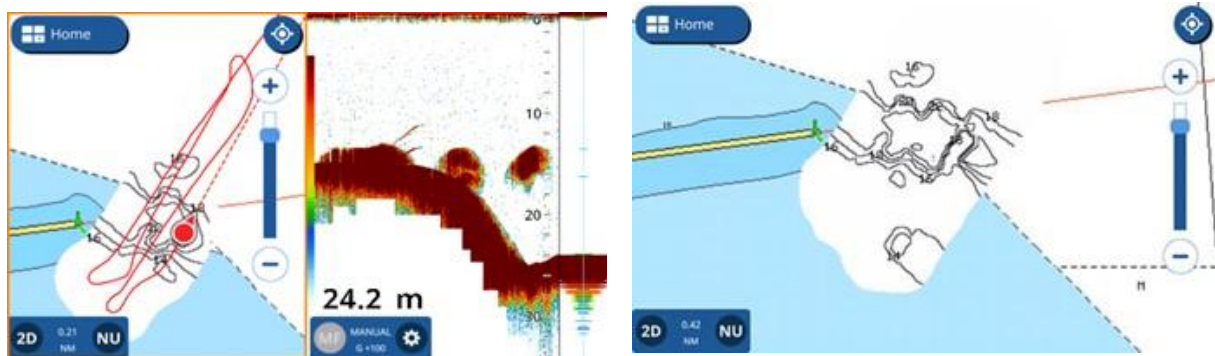


SONARCHART™ OFF

To make it even more powerful, it can combine charts with fishing ranges, a feature that allows users to highlight up to five different ranges with different colors to see at a glance where to cast a line.



The SonarChart™ Live mapping feature allows knowing the bottom condition in real time with new contours appearing on the screen as the boat moves on the water.



If users want additional data on their cartography, Platinum+ charts offer all the Navionics+ content plus panoramic photos, 3D view and premium shading overlays.

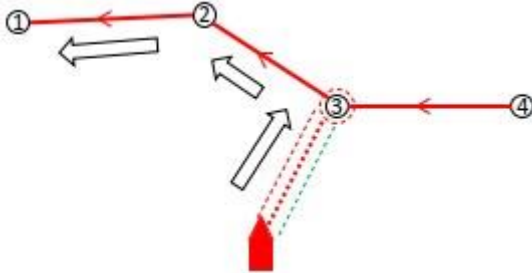
Plotter

The new version 4.0 has led to an improvement of the plotter. First of all, the reverse navigation function was improved: in previous versions the reverse route was activated only from the arrival waypoint, with the new 4.0 version, the reverse route can be activated from any point tapped on the route. The number of route points has also been increased: previously, a maximum of 50 waypoints was entered on one route. With the new v4.0, a maximum of 250 route points are available in order to handle Navionics Dock-to-Dock Autorouting and Plotter Sync features.

FURUNO

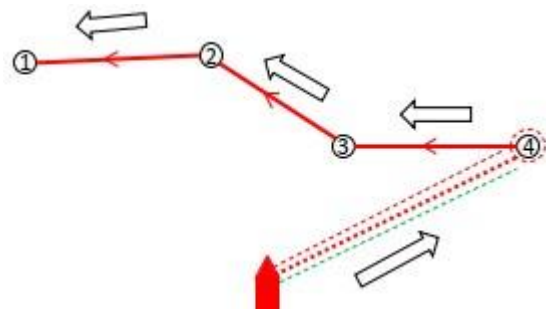
NEW – V4.0

The reversed route is activated from the selected point (3)



VERSIONI PRECEDENTI

The reversed route is activated from the point (4)



Fish Finder

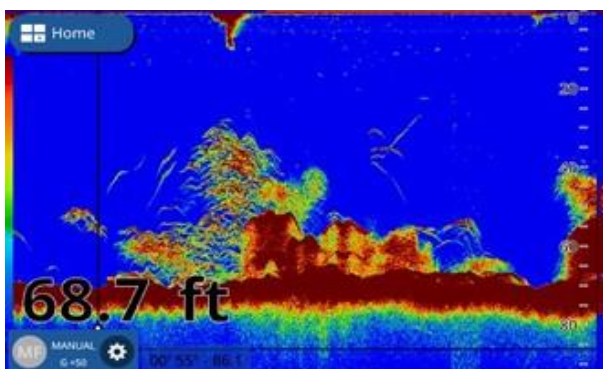
The Fish Finder has been improved with the addition of new color options (Blue and Sunlight).

Blue

This has been available with commercial Fish Finder such as FCV-1900, as well as NavNet TZtouch3 v2.xx and TZtouch2 v8.01 MFDs. The same color is available with v4.0 for users who prefer the conventional color scheme.

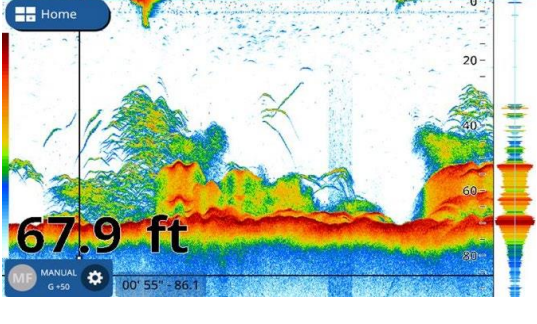
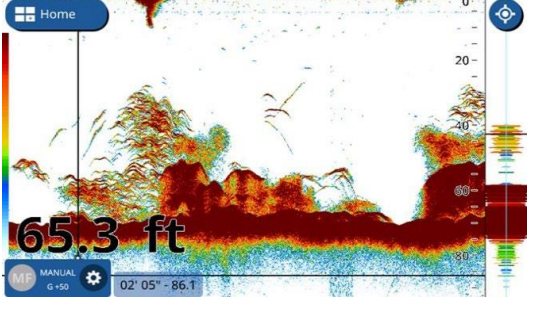
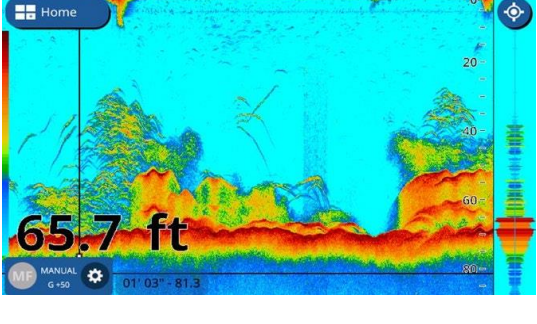
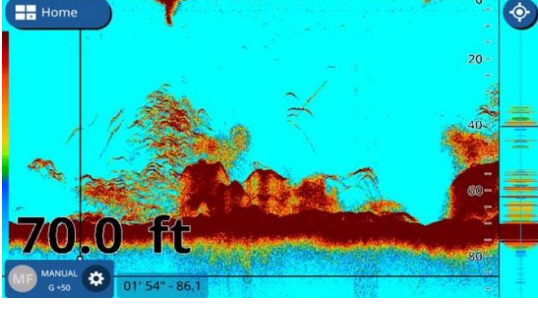
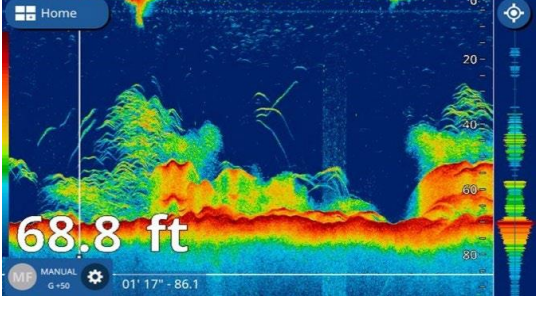
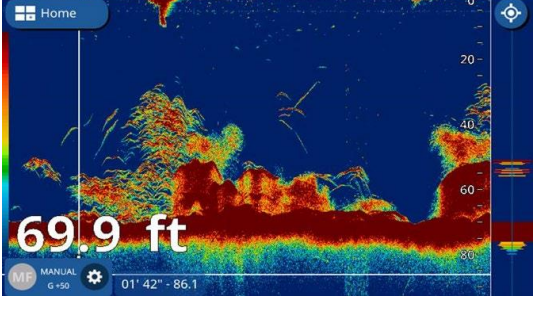
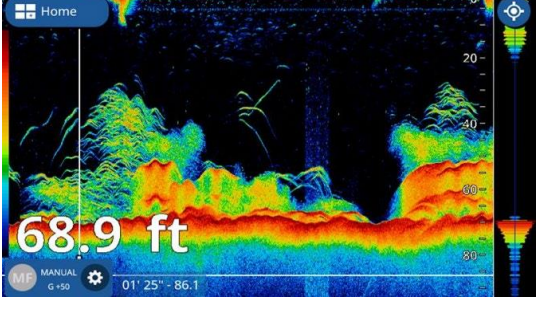
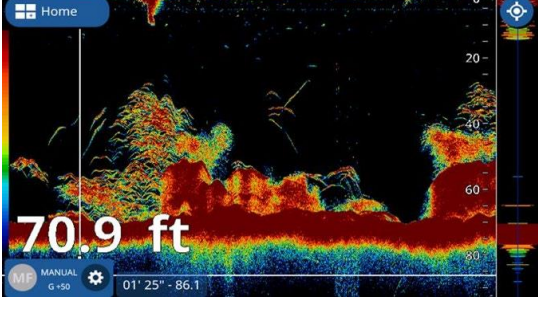
Sunlight

This color scheme based on green to purple helps ensure good visibility in sunlight.

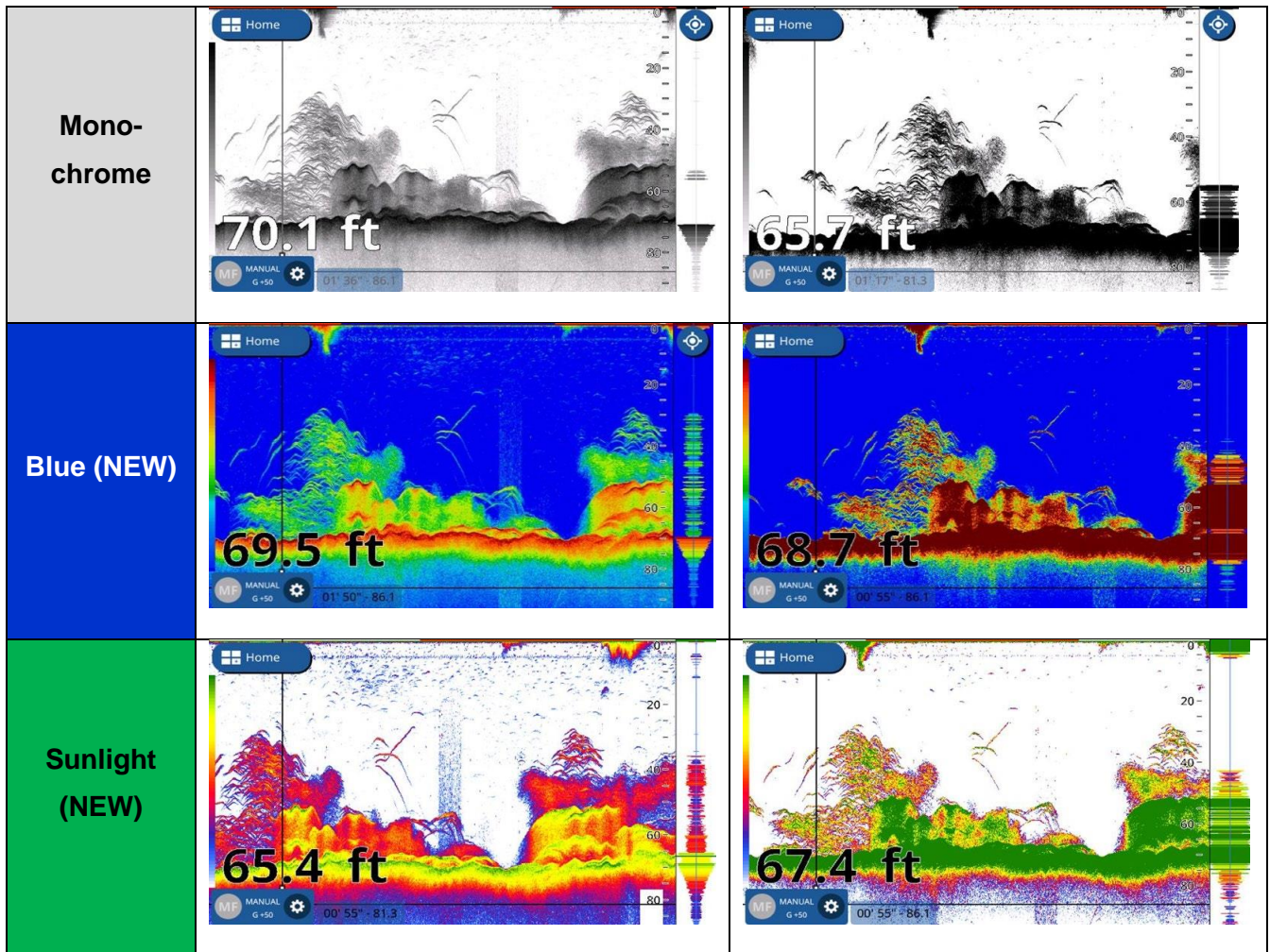


FURUNO

The Fish Finder has been improved also with the expansion of the color range. With the conventional color range, strong echoes from the seabed and a big school of fish were shown in similar color, i.e. brown to dark red. With the new Color Range Expansion, when the strength of echoes from the seabed and fish is slightly different, they are displayed in separate colors so that fish can be intuitively identified over the seabed

Colors	Color Range Expansion – ON (NEW)	OFF (Conventional)
White		
Light Blue		
Dark Blue		
Black		

FURUNO



Display

The new GP1x71F v4.0 presents a new 3-Axis Speed Display. A vessel has three (3) types of speed: forward-aft, transverse (port-starboard) at bow, and transverse (port-starboard) at stern. These speed components are called 3-axis speed. With the NMEA2000 PGN: 130578 (Vessel Speed Components) or NMEA0183 VBW sentences from a satellite compass input to the GP-1871F/1971F v4.0, 3-axis speed can be shown in graphical and digital indications in the Full or Quarter screen modes. Digital values are shown in 2 digits after the decimal point. This precise indication will help monitor the detailed motion of the boat, berth at a harbor, and see how the boat is drifted or sailed.