

S5 Product Line Accessories

SHOCKWAVE

MARINE SUSPENSION SEATING

Shockwave S5-SS Suspension Base

SW-09108

The NEW Shockwave S5-SS stainless steel suspension base is a premium product built to last a lifetime. It is best suited for professional mariners boating in saltwater environments prone to high salinity and humidity. It offers a smoother, safer and more comfortable ride, providing boaters an experience they have never experienced before.

This S5-SS suspension is electropolished and welded using 316 stainless steel, and it provides the same forward action suspension design that boaters have come to expect in our recreational products. This suspension base protects occupants from the shock of wave impact in heavy seas, allowing recreational boaters to stay out longer and travel farther with less fatigue. It's the perfect solution for offshore fishing in rough water.



NEW



Easy to install and can be paired with almost any seat



4" [100mm] travel custom tuned and valved air spring shock



Designed and built in Canada

Spring and Shock	FOX Rhythm, Air Spring and Shock with Adjustable Rebound and Compression
Construction	Electropolished Welded 316 Stainless Steel
Suspension Design	4-Link Forward Action
Overall Performance	Best for Professional Mariner's Use in Heavy Seas
Warranty	5 Year – Limited Warranty

Cabin Use	Yes
Outside Deck Use	Best for Saltwater with High Salinity and Humidity
Size	H: 9.0in [229mm] W: 10.8in [274mm] L: 16.3in [414mm]
Weight	30.0 lbs [13.6 kg]
Weight Capacity	Up to 300 lbs [136.1 kg]

S5 Product Line Accessories

SHOCKWAVE

MARINE SUSPENSION SEATING

Shockwave Shock Pump

SW-01983-PKG

A shock pump is required to properly operate all Shockwave S5 suspension bases. The high-pressure Shockwave shock pump features a pressure gauge and bleed valve for simple adjustment.



- ✓ The S5 suspension base must be pressurized at install or it will not operate properly
- ✓ Factory pressure setting is approximately 100-150 psi
- ✓ The shock should be pressurized to match the weight (in pounds) of the occupant
- ✓ Use as needed, after install, to adjust shock pressure (psi) for a heavier or lighter person
- ✓ Maximum inflation pressure of 350 psi



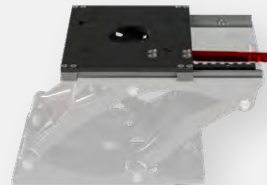
Shockwave S5 Corbin Seat

Black: SW-04920-B • White: SW-04920-W
Heavy-duty: SW-04920-HD



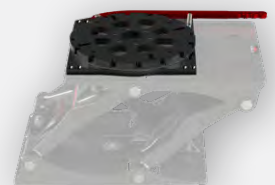
Swivel Slide

SW-05488



Slide

SW-05489



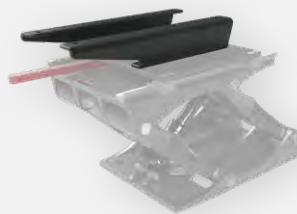
Swivel

SW-05592



**Bulkhead Mount
Adjustable Footrest**

SW-07507



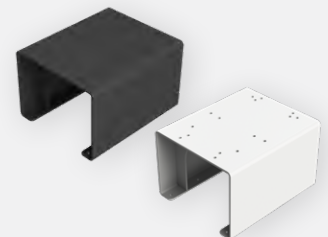
**15x12" [27x305mm]
Seat Adapter Kit**

SW-08290



**Cup Holder
with Aluminum Bracket**

SW-01688



Riser Boxes

3" [8cm]: SW-09502-B | -W
6" [15cm]: SW-07251-B | -W
9" [23cm]: SW-07920-B | -W
12" [30cm]: SW-09494-B | -W