

# Wireless light pole



**OSCULATI**

## THE PRODUCT

An innovative removable light rod system with wireless contact attachment base.

The baseplate that is mounted on deck serves as both the mounting point for the rod and the electrical power transmission contact.

Once the light rod is stowed away, the mounting base remains compact with no exposed electrical contact, while its stainless steel ferrule lends strength and elegance.



## THE PRODUCT

Thanks to a special wireless electrical contact, the attachment base is able to transfer to the receiver of the light rod the energy needed to turn on the white light 360°.

Once the light rod is mounted on the base, it will automatically begin conducting electricity, illuminating the white LED head of the rod.



The attachment of the rod is designed to be easily guessed by any user with three bayonet teeth that clamp onto the steel ferrule, its high-strength hold is guaranteed even in the most adverse sea conditions.

price € 118,00

## TECHNOLOGY

The wireless contact was developed to be able to transfer as much energy as possible in a confined space.

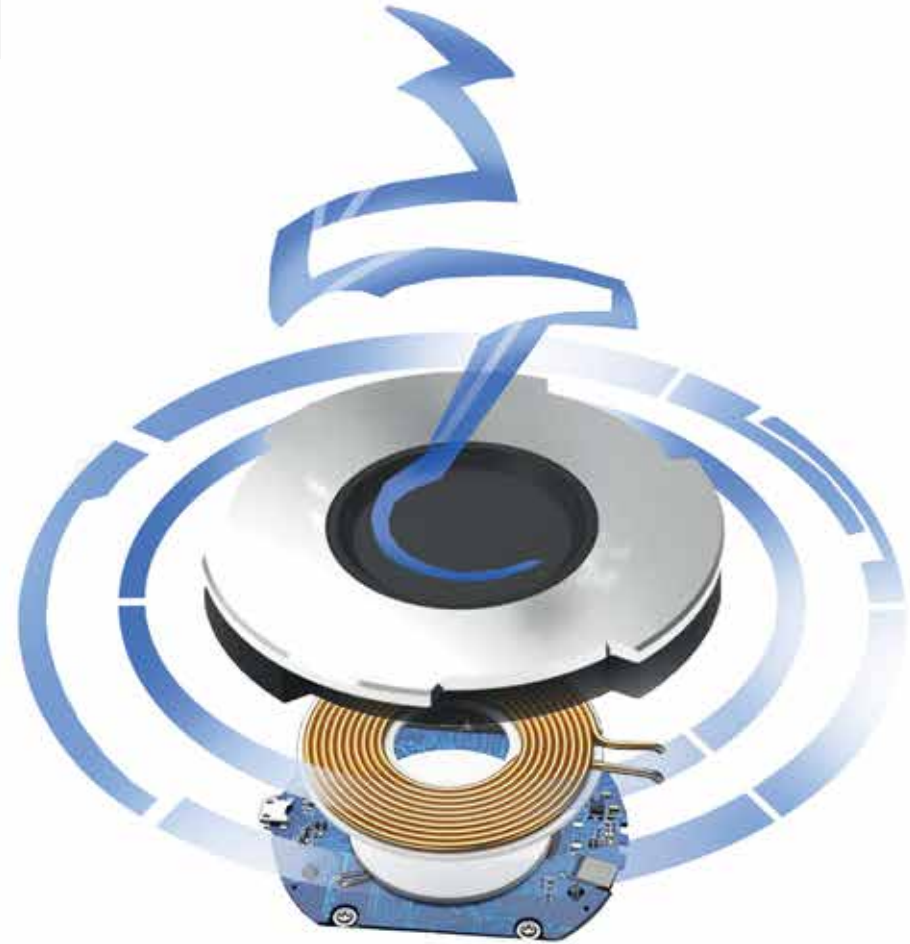
Our system can conduct as much as 3A through a transmitter with a diameter of only 32mm.

The system consists of an emitter board, which is directly connected to the boat's electrical circuit, and a receiver board that captures the emitted energy.

The system is activated only when the emitter detects the proximity of the receiver, so there is no wasted energy in the system.

The use of this contact brings many advantages over traditional systems:

- no exposed electrical contacts
- allows complete isolation from water
- less contact wear and longer product life cycle
- simpler and cleaner design



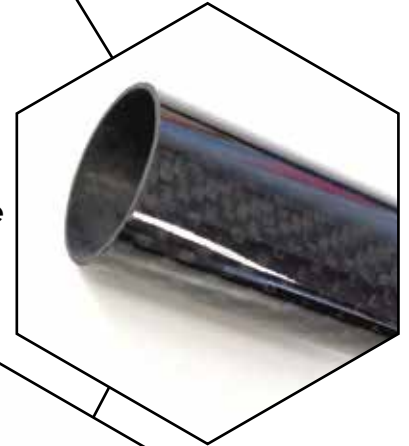
## QUALITY AND STYLE

The boating world is moving more and more towards boats with a style driven by speed, technology and comfort; we at Osculati believe that hull fitting accessories must reflect these requirements and bring innovation that continues to improve the boating experience.

This is precisely why our research and development team has worked hard to find the best shapes and materials for this product, paying attention to detail and all stages of production Made in Italy.



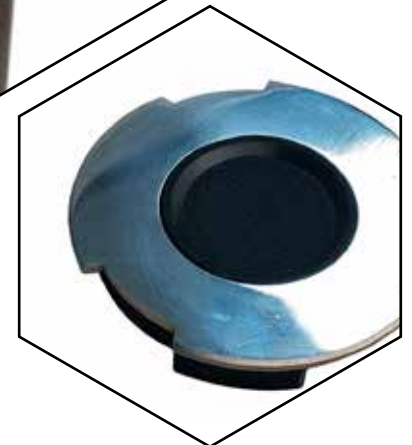
Carbon pole



USCG certified

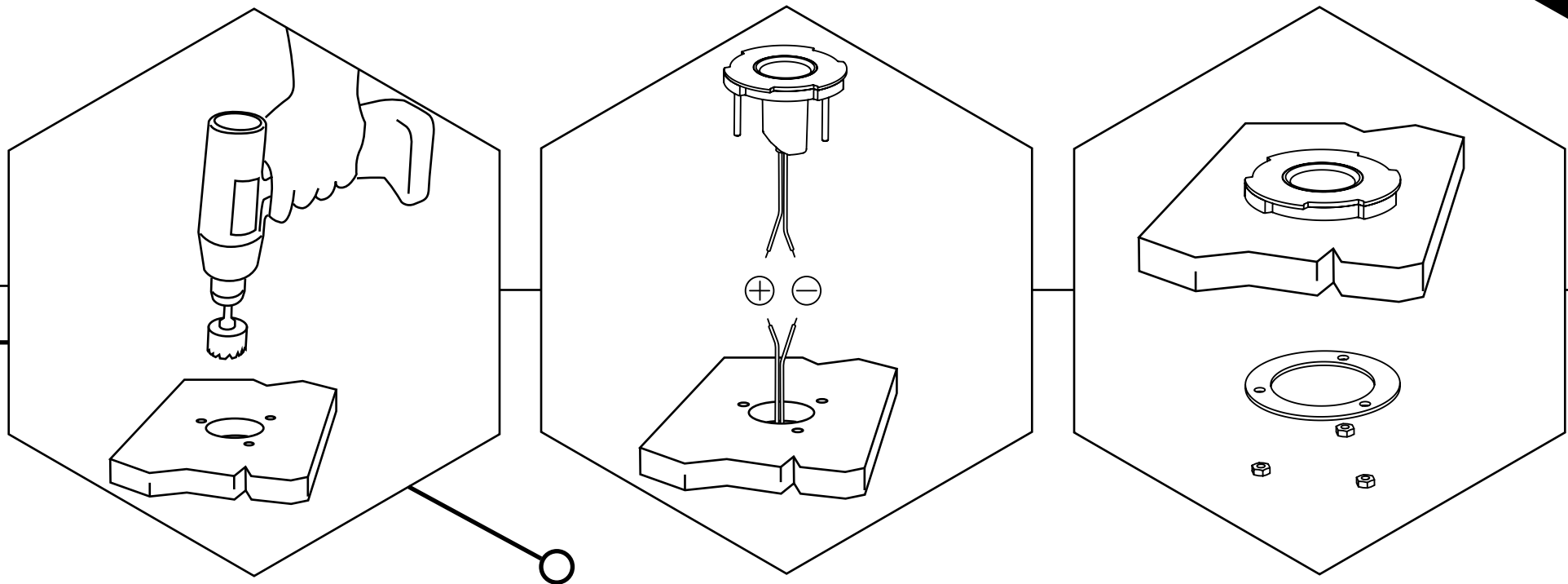


SS AISI 316



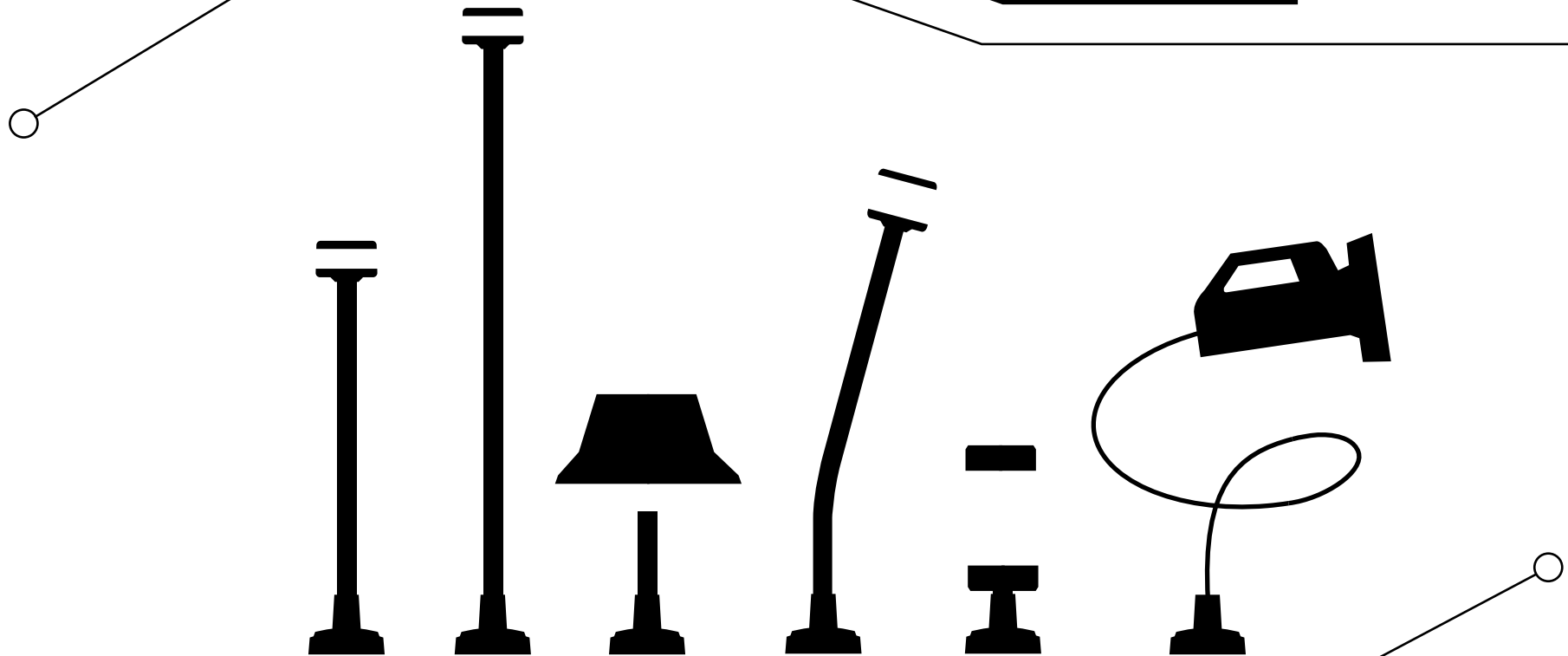
## INSTALLATION

The attachment base is easily installed anywhere on the deck of the boat. It is necessary to drill the surface with a 35mm-diameter hole cutter and drill three holes for the through studs of the stainless steel ferrule. The wiring should be connected to the 12 V onboard power supply. A steel counter flange under the drill will ensure a firm and durable seal.



## VERSATILITY

The product is currently available in two white light versions with variable rod lengths: 60 cm and 100 cm. However, the versatility of the base makes it possible to develop countless lighting solutions, from table lamp to navigation light.



**OSCULATI**