



LEISURE RANGE
www.typhoon-int.co.uk

EXPLORE WITH CONFIDENCE

Since 1947, Typhoon International has been passionate about enhancing water sports experiences worldwide.

Renowned for pursuit of innovation and commitment to quality, our journey began with a singular focus: crafting durable gear that keeps you safe in and on the water.

As we look to the future, we continue to push boundaries by integrating cutting-edge technologies and sustainable practices into our products. Our mission remains clear: to empower adventurers with reliable equipment designed to conquer any challenge.

Join us on our ongoing journey, where exploration meets confidence, guided by Typhoon's unwavering dedication to keeping you safe in the water.



CONTENTS

01 DRYSUITS 4 - 13

02 WETSUITS 14 - 29

03 PERSONAL FLOATATION 30 - 33

04 TECH CLOTHING 34 - 43

05 BASE LAYERS 44 - 49

06 FOOTWEAR 50 - 63

07 GLOVES 64 - 69

08 HEADWEAR 70 - 73

09 LUGGAGE 74 - 79

10 EQUIPMENT 80 - 93

11 TOWABLES 94 - 97

PRODUCT KEY:



WOMEN'S
FIT



MEN'S
FIT



YOUTH
FIT

01 DRYSUITS

Take on the elements with Typhoon's one piece suits, where breathability and flexibility meet comfort and performance.

Built to keep you dry and designed to last, our suits use high-tech materials and seam-sealing methods providing ultimate robust protection.

Engineered to endure the toughest demands, our expansive range suits a variety of sports.

Dive in, sail on, and paddle out with the confidence that Typhoon has you covered.



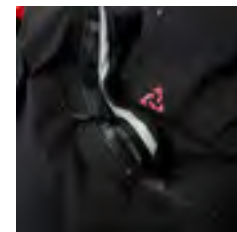


PS440 2.0 / HINGE ZIP



UK SKU:	100202
EU SKU:	S P200089 M P200091 L P200093 XL P200094 XXL P200095
SIZE:	S, M, L, XL, XXL
COLOUR:	Red / Black ▲▼
MATERIAL:	TX-4 Waterproof & Breathable Nylon with DWR Coating 500D PU Coated Reinforced Panels

- YKK® Aquaseal hinge entry & convenience zips
- Removable, packaway, hi-vis hood & fleece lined storm collar
- Glideskin neoprene neck & cuff seals with adjustable covers
- Large kangaroo style pocket with D-ring & elastic loop, plus separate side pockets with splashproof zips
- Thigh bellow pocket with chart/ map pouch
- Internal elastic drawcord pullers at jacket hem to reduce snag hazards
- IMO Reflective details
- Superior durability at knees & seat with removable neoprene seat inserts
- Fabric socks
- Internal braces with swivel buckles & chest strap
- Changing mat bag included



MAX-B 2.0 / FRONT ZIP



UK SKU:	100199			
EU SKU:	S	P027163	L	P027167
	SM	P027164	LB	P027171
	M	P027165	XL	P027168
	MB	P027170	XXL	P027169
	LM	P027166	KNEE PAD	P204079
SIZE:	S, SM, M, MB, LM, L, LB, XL, XXL			
COLOUR:	Red / Black ▲▼			
MATERIAL:	TX-4 Waterproof & Breathable Nylon with DWR Coating 500D PU Coated Reinforced Panels			

- YKK® Aquaseal front entry & convenience zips
- Fleece lined storm collar
- Glideskin neoprene neck & cuff seals
- Thigh pocket with chart/map window pouch
- Fabric socks
- Reinforced seat, shin & knees
- Knee/shin pocket for knee pads if required

- Reflective details
- Internal braces with swivel buckles & chest strap
- Changing mat bag included

KNEE PADS

- Compatible with the Max-B 2.0, for those that need it



SEA KAYAK / HINGE ZIP



UK SKU:	100200	100201		
EU SKU:	Mens (M)		Womens (W)	
	S P200098	XL P200103	S P200107	SR P200112
	SM P200099	XXL P200104	SM P200108	LR P200113
	M P200100	MB P200105	M P200109	
	LM P200101	LB P200106	LM P200110	
	L P200102	L P200111		
SIZE:	S, SM, M, LM, L, XL, XXL, MB, LB		S, SM, M, LM, L, SR, LR	
COLOUR:	Tangerine / Grey ▲▼		Tangerine / Plum ▲▼	
MATERIAL:	TX-4 Waterproof & Breathable Nylon with DWR Coating 500D PU Coated Reinforced Panels			

- YKK® Aquaseal hinge entry & convenience zips
- Dropseat feature using main zip
- Glideskin neoprene neck seal
- Latex cuff seals
- Ergonomic, adjustable, hi-vis, packaway hood in fleece lined collar
- Fleece lined storm collar
- Neoprene double waistband with adjustment
- IMO Reflective details
- Reinforced seat, knees & shins
- Removable neoprene seat inserts
- Sleeve pocket
- Fabric socks
- Internal braces with swivel buckles & chest strap
- Changing mat bag included

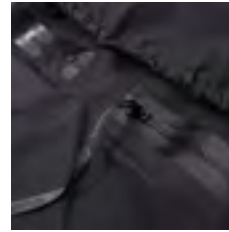
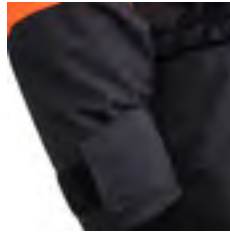


MULTISPORT 2.0 / BACK ZIP



UK SKU:	100197			
EU SKU:	S	P019421	L	P019425
	SM	P019422	XL	P019426
	M	P019423	XXL	P019427
	LM	P019424	MB	P019428
SIZE:	S, SM, M, LM, L, XL, XXL, MB			
COLOUR:	Red / Black ▲▼			
MATERIAL:	TX-4 Waterproof & Breathable Nylon with DWR Coating 500D PU Coated Reinforced Panels			

- BDM® back entry & convenience zips with covers
- Latex neck seal with adjustable neoprene warm neck cover
- Latex cuff seals
- Adjustable wrist & ankle cuff covers
- Neoprene double waistband with adjustment
- Reinforced seat, knee & elbows
- Fabric socks
- Internal braces
- Changing mat bag included



ROAN / HINGE ZIP



UK SKU:	100184
EU SKU:	S P019365 M P019366 L P019367 XL P019368 XXL P019369
SIZE:	S, M, L, XL, XXL
COLOUR:	Orange/Graphite ▲▼
MATERIAL:	TX-4 Waterproof & Breathable Nylon with DWR Coating PU Coated Reinforced Panels

- YKK® Aquaseal hinge entry zip
- Dropseat feature
- Glideskin neoprene neck
- Latex cuff seals with adjustable covers
- Waist skirt with elastic hem
- Reinforced knees & seat
- Fabric socks
- Internal braces with G-hook at back attachment for dropseat feature



HENDRA / HINGE ZIP



UK SKU:	100185																
EU SKU:	<table border="0"> <tr> <td>S</td> <td>P019370</td> <td>L</td> <td>P019377</td> </tr> <tr> <td>SM</td> <td>P019372</td> <td>SR</td> <td>P019378</td> </tr> <tr> <td>M</td> <td>P019374</td> <td>LR</td> <td>P019379</td> </tr> <tr> <td>LM</td> <td>P019375</td> <td></td> <td></td> </tr> </table>	S	P019370	L	P019377	SM	P019372	SR	P019378	M	P019374	LR	P019379	LM	P019375		
S	P019370	L	P019377														
SM	P019372	SR	P019378														
M	P019374	LR	P019379														
LM	P019375																
SIZE:	S, SR, SM, M, LM, LR, L																
COLOUR:	Orange / Navy ▲▼																
MATERIAL:	TX-4 Waterproof & Breathable Nylon with DWR Coating 500D PU Coated Reinforced Panels																

- YKK® Aquaseal hinge entry zip
- Women's specific fit
- Dropseat feature
- Waist skirt with adjustable hook tabs & smoothskin grip at the hem
- Glideskin neoprene neck & cuff seals
- Reinforced seat & knees
- Fabric socks
- Internal braces with G-hook at back attachment for dropseat feature

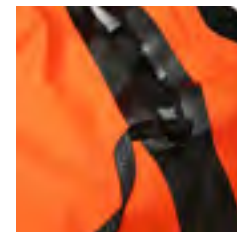


EZEEDON 2.0 / FRONT ZIP



UK SKU:	100187	100192		
EU SKU:	Mens (M)		Womens (W)	
	S P017333	L P017337	S P019405	LM P019408
	SM P017334	LB P017341	SR P019410	LR P019411
	M P017335	XL P017338	SM P019406	L P019409
	MB P017340	XXL P017339	M P019407	
LM P017336				
SIZE:	S, SM, M, MB, LM, L, LB, XL, XXL	S, SR, SM, M, LM, LR, L		
COLOUR:	Black / Grey ▲▼	Black / Grey ▲▼		
MATERIAL:	TX-4 Waterproof & Breathable Nylon with DWR Coating PU Coated Reinforced Panels			

- YKK® Aquaseal front entry zip with zipped cover
- Glideskin neoprene neck & cuff seals
- Elasticated back waist
- Reinforced knees & seat
- Bellow leg pocket with hook & loop closure
- Fabric socks
- Internal braces



ROOKIE 2.0 / BACK ZIP - YOUTH

UK SKU:	100196
EU SKU:	Y-S P017330 Y-M P017331 Y-L/XL P017332
SIZE:	Y-S, Y-M, Y-L/XL
COLOUR:	Orange / Graphite ▲▼
MATERIAL:	TX-4 Waterproof & Breathable Nylon with DWR Coating

- YKK® Aquaseal back entry zip
- Glideskin neoprene neck & cuff seals
- Elasticated back waist
- Latex socks
- Internal braces



EXPLORE
WITH
CONFIDENCE

02 WETSUITS

Hit the water with Typhoon's wetsuits, made using eco-conscious materials and ergonomic fits, they are crafted for those craving adventure.

Available in styles for men, women and youth. Each suit combines sharp looks and bold colours. Our wetsuits are your perfect partner for surfing, boating or beach days.

Gear up for a day of confident, comfortable fun in the waves.



Protecting Our Planet
Learn more on pg. 92





ESSENTIAL / 3/2 FULL WETSUIT BACK ZIP - MENS

UK SKU:	250000	250001	250002
EU SKU:	S P203670 M P203671 L P203218 XL P203672 XXL P203673	S P203674 M P203675 L P203219 XL P203677	S P203679 M P203682 L P203217 XL P203683
SIZE:	S, M, L, XL, XXL	S, M, L, XL	S, M, L, XL
COLOUR:	Black / Solar ▲▼	Graphite / Slate ▲▼	Graphite / Bolt ▲▼
MATERIAL:	Limestone Based REACH CR Neoprene Nylon Inner and Outer Laminate		

- 3/2mm ultrastretch, eco limestone neoprene
- Flatlocked, breathable stitched seam technology
- YKK® back entry zip system
- Ergonomic design for ease of movement
- Superstretch at underarm for maximum flex
- Reinforcements at cross seams for durability
- Abrasion resistant knee panels



ESSENTIAL / 3/2 SHORTY BACK ZIP - MENS

UK SKU:	250010	250011
EU SKU:	S P203691 M P203694 L P203220 XL P203696 XXL P203697	S P203699 M P203700 L P203221 XL P203702
SIZE:	S, M, L, XL, XXL	S, M, L, XL
COLOUR:	Black / Solar ▲▼	Graphite / Slate ▲▼
MATERIAL:	Limestone Based REACH CR Neoprene Nylon Inner and Outer Laminate	

- 3/2mm ultrastretch, eco limestone neoprene
- Flatlocked, breathable stitched seam technology
- YKK® back entry zip system
- Ergonomic design for ease of movement
- Superstretch at underarm for maximum flex
- Reinforcements at cross seams for durability



ESSENTIAL / 3/2 FULL WETSUIT BACK ZIP - WOMENS

UK SKU:	250020	250021
EU SKU:	8 P203704 10 P203705 12 P203222 14 P203706 16 P203708	8 P203710 10 P203711 12 P203223 14 P203713 16 P203714
SIZE:	8, 10, 12, 14, 16	8, 10, 12, 14, 16
COLOUR:	Black / Ocean ▲▼	Azure / Nimbus ▲▼
MATERIAL:	Limestone Based REACH CR Neoprene Nylon Inner and Outer Laminate	

- 3/2mm ultrastretch, eco limestone neoprene
- Flatlocked, breathable stitched seam technology
- YKK® back entry zip system
- Ergonomic design for ease of movement
- Superstretch at underarm for maximum flex
- Reinforcements at cross seams for durability
- Abrasion resistant knee panels



ESSENTIAL / 3/2 SHORTY BACK ZIP - WOMENS

UK SKU:	250030
EU SKU:	8 P203717 10 P203718 12 P203224 14 P203719 16 P203720
SIZE:	8, 10, 12, 14,16
COLOUR:	Azure / Nimbus ▲▼
MATERIAL:	Limestone Based REACH CR Neoprene Nylon Inner and Outer Laminate

- 3/2mm ultrastretch, eco limestone neoprene
- Flatlocked, breathable stitched seam technology
- YKK® back entry zip system
- Ergonomic design for ease of movement
- Superstretch at underarm for maximum flex
- Reinforcements at cross seams for durability



ESSENTIAL / 3/2 FULL WETSUIT BACK ZIP - YOUTH

UK SKU:	250040	250041
EU SKU:	Y-S P204527 Y-M P203721 Y-L P203225 Y-XL P203722 Y-XXL P204528	Y-S P204529 Y-M P203724 Y-L P203226 Y-XL P203725
SIZE:	Y-S, Y-M, Y-L, Y-XL, Y-XXL	Y-S, Y-M, Y-L, Y-XL
COLOUR:	Ember / Black ▲▼	Azure / Ocean ▲▼
MATERIAL:	Limestone Based REACH CR Neoprene Nylon Inner and Outer Laminate	

- 3/2mm ultrastretch, eco limestone neoprene
- Flatlocked, breathable stitched seam technology
- YKK® back entry zip system
- Ergonomic design for ease of movement
- Superstretch at underarm for maximum flex
- Reinforcements at cross seams for durability
- Abrasion resistant knee panels



ESSENTIAL / 3/2 SHORTY BACK ZIP - YOUTH

UK SKU:	250050	250051
EU SKU:	Y-M P203727 Y-L P203227 Y-XL P203728	Y-M P203729 Y-L P203228 Y-XL P203731
SIZE:	Y-M, Y-L, Y-XL	Y-M, Y-L, Y-XL
COLOUR:	Ember / Black ▲▼	Azure / Ocean ▲▼
MATERIAL:	Limestone Based REACH CR Neoprene Nylon Inner and Outer Laminate	

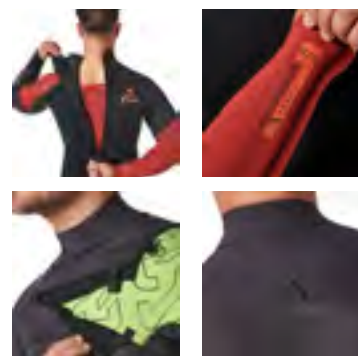
- 3/2mm ultrastretch, eco limestone neoprene
- Flatlocked, breathable stitched seam technology
- YKK® back entry zip system
- Ergonomic design for ease of movement
- Superstretch at underarm for maximum flex
- Reinforcements at cross seams for durability



PERFORMANCE / 3/2 FULL WETSUIT BACK ZIP - MENS



PERFORMANCE / 3/2 FULL WETSUIT CHEST ZIP - MENS



UK SKU:	250060
EU SKU:	S P203745 M P203746 L P203231 XL P203747 XXL P203748
SIZE:	S, M, L, XL, XXL
COLOUR:	Black / Sundown ▲▼
MATERIAL:	Limestone Based REACH CR Neoprene Nylon Inner and Outer Laminate Recycled Polyester Plush

UK SKU:	250065
EU SKU:	S P203749 M P203750 L P203232 XL P203751 XXL P203752
SIZE:	S, M, L, XL, XXL
COLOUR:	Graphite / Bolt / Lime ▲▼▲
MATERIAL:	Limestone Based REACH CR Neoprene Nylon Inner and Outer Laminate Recycled Polyester Plush

- 3/2mm ultrastretch, eco limestone neoprene
- Plush lining for warmth at chest & back
- YKK® zip system at chest or back
- Glued & blindstitched seam seal technology for durability & warmth
- No seams at paddlezones for reduced fatigue
- Superstretch at underarm for maximum flex
- Reinforcements at cross seams for durability
- Abrasion resistant knee panels



**PERFORMANCE / 3/2 FULL
WETSUIT BACK ZIP - WOMENS**



**PERFORMANCE / 3/2 FULL
WETSUIT CHEST ZIP - WOMENS**



UK SKU:	250070
EU SKU:	8 P203753 10 P203754 12 P203233 14 P203755 16 P203756
SIZE:	8, 10, 12, 14, 16
COLOUR:	Black / Sundown ▲▼
MATERIAL:	Limestone Based REACH CR Neoprene Nylon Inner and Outer Laminate Recycled Polyester Plush

UK SKU:	250080
EU SKU:	8 P203757 10 P203758 12 P203234 14 P203759 16 P203760
SIZE:	8, 10, 12, 14, 16
COLOUR:	Graphite / Lime ▲▼▲
MATERIAL:	Limestone Based REACH CR Neoprene Nylon Inner and Outer Laminate Recycled Polyester Plush

- 3/2mm ultrastretch, eco limestone neoprene
- Plush lining for warmth at chest & back
- YKK® zip system at chest or back
- Glued & blindstitched seam seal technology for durability & warmth
- No seams at paddlezones for reduced fatigue
- Superstretch at underarm for maximum flex
- Reinforcements at cross seams for durability
- Abrasion resistant knee panels



PERFORMANCE / 3/2 FULL WETSUIT BACK ZIP - YOUTH



PERFORMANCE / 3/2 FULL WETSUIT CHEST ZIP - YOUTH



UK SKU:	250095
EU SKU:	Y-M P203763 Y-L P203236 Y-XL P203764
SIZE:	Y-M, Y-L, Y-XL
COLOUR:	Black / Sundown ▲▼
MATERIAL:	Limestone Based REACH CR Neoprene Nylon Inner and Outer Laminate Recycled Polyester Plush

UK SKU:	250090
EU SKU:	Y-M P203761 Y-L P203235 Y-XL P203762
SIZE:	Y-M, Y-L, Y-XL
COLOUR:	Graphite / Lime ▲▼▲
MATERIAL:	Limestone Based REACH CR Neoprene Nylon Inner and Outer Laminate Recycled Polyester Plush

- 3/2mm ultrastretch, eco limestone neoprene
- Plush lining for warmth at chest & back
- YKK® zip system at chest or back
- Glued & blindstitched seam seal technology for durability & warmth
- No seams at paddlezones for reduced fatigue
- Superstretch at underarm for maximum flex
- Reinforcements at cross seams for durability
- Abrasion resistant knee panels



CALISO3 / LONG JOHN

UK SKU:	251030	251050	251070
EU SKU:	Mens (M)	Womens (W)	Youth (Y)
	S P200191	8 P200196	Y-M P200201
	M P200192	10 P200197	Y-L P200202
	L P200193	12 P200198	Y-XL P200203
	XL P200194	14 P200199	
XXL P200195	16 P200200		
SIZE:	S, M, L, XL	8, 10, 12, 14, 16	Y-M, Y-L, Y-XL
COLOUR:	Black ▲▼	Black ▲▼	Black ▲▼
MATERIAL:	Limestone Based REACH CR Neoprene Recycled Polyester Laminate		

- 3/2mm premium eco, ultrastretch, limestone based neoprene
- Glued & blind stitch sealed seam technology
- Incredible insulation & wicking properties for maximum thermal comfort & protection
- Internal lightweight thermal back liner, offering high-stretch, water repellent, quick dry properties
- Abrasion resistant seat protection
- Convenience zip (mens Long John only)
- Ergonomic design for ease of movement



CALISO3 / TOP



UK SKU:	251040	251060	251080
EU SKU:	Mens (M)	Womens (W)	Youth (Y)
	S P200204	8 P200209	Y-M P200214
	M P200205	10 P200210	Y-L P200215
	L P200206	12 P200211	Y-XL P200216
	XL P200207	14 P200212	
XXL P200208	16 P200213		
SIZE:	S, M, L, XL	8, 10, 12, 14, 16	Y-M, Y-L, Y-XL
COLOUR:	Black ▲▼	Black ▲▼	Black ▲▼
MATERIAL:	Limestone Based REACH CR Neoprene Recycled Polyester Laminate		

- 3/2mm premium eco, ultrastretch, limestone based neoprene
- Incredible insulation & wicking properties for maximum thermal comfort & protection
- Internal lightweight thermal back liner, offering high-stretch, water repellent, quick dry properties
- Internal plush chest liner, offering high-stretch, quick dry properties
- Glued & blind stitch sealed seam technology
- Ergonomic design for ease of movement



ESSENTIAL / 3/2 LONG JOHN - MENS

UK SKU:	250802
EU SKU:	S P203732 M P203733 L P203229 XL P203734 XXL P203735
SIZE:	S, M , L, XL, XXL
COLOUR:	Black / Solar ▲▼
MATERIAL:	Limestone Based REACH CR Neoprene Nylon Inner and Outer Laminate

- 3/2mm ultrastretch, eco limestone neoprene
- Flatlocked, breathable stitched seam technology
- Zip-free entry for a snug-fit
- Ergonomic design for ease of movement
- Superstretch at crotch & hip for maximum flex
- Reinforcements at cross seams for durability
- Abrasion resistant seat panels



CENTRE3 / FULL WETSUIT - BACK ZIP

UK SKU:	250513			
EU SKU:	Adults			
	XS	P021545	L	P021548
	S	P021546	XL	P021549
	M	P021547	XXL	P021550
SIZE:	XS, S, M, MT, L, XL, XXL			
COLOUR:	Black / Blue ▲▼			
MATERIAL:	CR Neoprene with Nylon Laminate			

UK SKU:	250512-0003	250512-0002	250512-0003
SKU/ SIZE:	Child (C) P021551 (H:137cm/ C:71cm)	Junior (J) P021552 (H:147cm/ C:76cm)	Youth (Y) P021553 (H:157cm/ C:84cm)
SIZE:	CHILD	JUNIOR	YOUTH
COLOUR:	Black / Red ▲▼	Black / Red ▲▼	Black / Red ▲▼
MATERIAL:	CR Neoprene with Nylon Laminate		

- Ultra durable 3mm neoprene
- Superstretch neoprene on sleeve & undersleeve for flexibility & movement
- Flatlocked seam construction
- YKK® back entry zip
- 3mm Rotex neoprene reinforcement on seat & knees
- Easy read size labelling & colour coding system on sleeve



CENTRE5 / FULL WETSUIT - BACK ZIP

UK SKU:	250513					
EU SKU:	Adults					
	XS	P021554	L	P021558		
	S	P021555	XL	P021559		
	M	P021556	XXL	P021560		
	MT	P021557				
SIZE:	XS, S, M, MT, L, XL, XXL					
COLOUR:	Black / Blue ▲▼					
MATERIAL:	CR Neoprene with Nylon Laminate					

UK SKU:	250514	250514	250514
EU SKU:	Child (C)	Junior (J)	Youth (Y)
	P021561 (H:137cm/ C:71cm)	P021562 (H:147cm/ C:76cm)	P021563 (H:157cm/ C:84cm)
SIZE:	CHILD	JUNIOR	YOUTH
COLOUR:	Black / Red ▲▼	Black / Red ▲▼	Black / Red ▲▼
MATERIAL:	CR Neoprene with Nylon Laminate		

- Ultra durable 5mm neoprene
- Superstretch neoprene on sleeve & undersleeve for flexibility & movement
- Flatlocked seam construction
- YKK® back entry zip
- 5mm Rotex neoprene reinforcement on seat & knees
- Easy read size labelling & colour coding system on sleeve

EXPLORE
WITH
CONFIDENCE



03 PERSONAL FLOATATION

Typhoon offers a choice of must-have personal floatation devices ideal for multi-sport use.

Designed for ease of wear and manufactured to the highest safety standards. Low-profile designs and smart styling sets this range apart.

Additional features enhance functionality and allow for a personalised fit, ensuring safety and comfort during any water activity.





HUDSON / 50N BUOYANCY AID

UK SKU:	410410 / 410400-000	410425 / 410400-005	410430 / 410400-010
EU SKU:	Adult/JNR JNR P201432 XS-S P201437 M-L P201438 XL-XXL P201439	Adult/JNR JNR P201435 XS-S P201446 M-L P201447 XL-XXL P201448	Adult/JNR JNR P201436 XS-S P201449 M-L P201450 XL-XXL P201451
SIZE:	XS-S, M-L, XL-XXL / JNR	XS-S, M-L, XL-XXL / JNR	XS-S, M-L, XL-XXL / JNR
COLOUR:	Black ▲▼	Blue ▲▼	Orange ▲▼
MATERIAL:	210D Polyester EPE Foam		

- Ergonomic design for flexibility & movement
- Front entry YKK® zip
- Front chest pocket with zip
- Internal whistle
- Crotch strap
- Fully adjustable shoulder & waist webbing straps
- Quick release front clasp
- Elasticated side panels
- BS EN ISO 12402-5 approved



CHESIL / 50N S/E BUOYANCY AID

UK SKU:	410300
EU SKU:	S-M P022419 M-L P022420 XL P022421 XXL P022422
SIZE:	S-M, M-L, XL, XXL
COLOUR:	Black ▲▼
MATERIAL:	200D Nylon Ripstop PVC Closed Cell Foam

- Super soft PVC buoyancy foam
- YKK® side zip with protective zip cover
- Front mesh pocket with top flap opening
- Reflective details for visibility
- Low profile
- Cut out for harness hook
- Back mesh drainage panels
- BS EN ISO 12402-5 approved

EXPLORE
WITH
CONFIDENCE

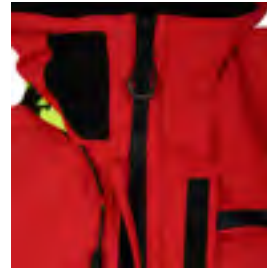


04 TECH CLOTHING

Whether it's jackets, smocks, salopettes, or shorts, Typhoon's tech clothing is designed to face the elements head-on.

Using cutting-edge fabrics and ergonomic designs, our apparel offers robust protection and superior comfort. Built for durability, this hard-wearing kit keeps you equipped and confident, whatever the weather.





TX-3+ / OFFSHORE JACKET

UK SKU:	430590		
EU SKU:	S P022660	XL P022663	
	M P022661	XXL P022664	
	L P022662		
SIZE:	S, M, L, XL, XXL		
COLOUR:	Red ▲▼		
MATERIAL:	100% F.D Nylon Tactel Cordura Overlays 100% Nylon		
WATERPROOF RATING:	15,000mm (15k)		
BREATHABILITY:	4000 g/m ² /24h (4k)		

- TX-3+ DWR coated, 3-layer nylon material with Tactel® yarns for durability & flexibility
- Fully taped seam construction
- Cordura® reinforced panels for abrasion resistance
- 2-way zip protected by double stormflap & drainage channel
- Self-draining large bellow pockets with keyclip
- Splashproof pocket zip
- PU adjustable cuff seals
- Ergonomic hi-vis hood & face mask
- Articulated arms for improved comfort & mobility
- Fleece lined hand pockets, outer & inner chest pocket
- Reflective print detail
- Hanger loop for easy drying & storage



TX-3+ / OFFSHORE HIFIT

UK SKU:	430600		
EU SKU:	S P022665 M P022666 L P022667	XL P022668 XXL P022669	
SIZE:	S, M, L, XL, XXL		
COLOUR:	Red ▲▼		
MATERIAL:	100% F.D Nylon Tactel Cordura Overlays 100% Nylon		
WATERPROOF RATING:	15,000mm (15k)		
BREATHABILITY:	4000 g/m ² /24h (4k)		

- TX-3+ DWR coated, 3-layer nylon material with Tactel® yarns for durability & flexibility
- Fully taped seam construction
- Cordura® reinforced panels for abrasion resistance
- Protective & fully adjustable fit
- Centre zip with internal gusset for ultimate waterproofing
- Splashproof zips for chest pockets
- Self draining large bellow pocket at front thigh
- Articulated knees for improved comfort & mobility
- Elasticated waist & snag-proof adjustment tabs
- Reflective print detail



PERFORMANCE / JACKET

EU SKU:	S P203786	S P203792
	M P203788	M P203793
	L P203789	L P203794
	XL P203790	XL P203795
	XXL P203791	XXL P203796
SIZE:	S, M, L, XL, XXL	S, M, L, XL, XXL
COLOUR:	Slate / Lime ▲▼	Red / Solar ▲▼
MATERIAL:	100% Polyester	
WATERPROOF RATING:	10,000mm (10k)	
BREATHABILITY:	10,000 g/m ² /24h (10k)	

- TX-3 DWR, coated 3-layer polyester material with mechanical stretch
- Fully taped seam construction
- Protective & fully adjustable fit
- Splash proof zips
- PU lined adjustable cuffs
- Unlined for reduced weight & increased flexibility
- Fleece lined collar
- Outer & inner chest pocket
- Reflective print detail



PERFORMANCE / HIFIT

EU SKU:	S P203802	S P203797
	M P203803	M P203798
	L P203804	L P203799
	XL P203805	XL P203800
	XXL P203806	XXL P203801
SIZE:	S, M, L, XL, XXL	S, M, L, XL, XXL
COLOUR:	Slate ▲▼	Black ▲▼
MATERIAL:	100% Polyester Cordura Overlays 100% Nylon	
WATERPROOF RATING:	10,000mm (10k)	
BREATHABILITY:	10,000 g/m ² /24h (10k)	

- TX-3 DWR coated, 3-layer polyester material with mechanical stretch
- Fully taped seam construction
- Cordura® reinforcing panels for abrasion resistance
- Unlined for reduced weight & increased flexibility
- Adjustable elastic straps
- 3x pockets with splashproof zips
- Centre zipper with internal gusset for ultimate waterproofing
- Elasticated waist & snag-proof adjustment tabs



PERFORMANCE / HOODED SMOCK

UK SKU:	430553				430554			
EU SKU:	Adults (A)				Youth & Adult (Y&A)			
	S	P203807	XL	P203810	Y-XL	P203817	L	P203820
	M	P203808	XXL	P203816	S	P203818	XL	P203821
	L	P203809			M	P203819		
SIZE:	XS, S, M, L, XL, XXL				Y-XL, S, M, L, XL			
COLOUR:	Black / Solar ▲▼				Bolt / Lime ▲▼			
MATERIAL:	100% Polyester							
WATERPROOF RATING:	5,000mm (5k)							
BREATHABILITY:	3000g/m ² /24h (3k)							

- 2 layer material
- Waterproof & breathable
- Taped seam construction
- Fleece lined collar
- Storable hood with drawcord adjustment
- Neoprene waistband with twin side adjusters
- PU cuff seals with adjustment
- Large front pocket

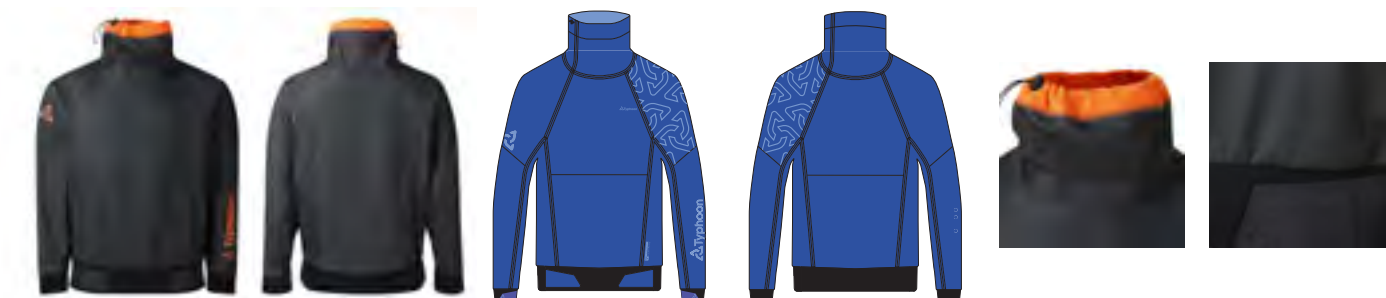


REGATTA / SMOCK



EU SKU:	S P203822	S P203832
	M P203823	M P203834
	L P203824	L P203835
	XL P203825	XL P203836
	XXL P203831	Y-XL P203833
SIZE:	S, M, L, XL, XXL	S, M, L, XL, Y-XL
COLOUR:	Slate / Lime ▲▼	Lime ▲▼
MATERIAL:	100% Polyester	
WATERPROOF RATING:	5,000mm (5k)	
BREATHABILITY:	3000g/m ² /24h (3k)	

- 2 layer material
- Waterproof & breathable
- Taped seam construction
- PU neck/ collar with adjustable gussets
- Neoprene waistband with twin side adjusters
- PU cuff seals with adjustment



THERMASHIELD / SMOCK



UK SKU:	430580	430583
EU SKU:	S P203839 M P203840 L P203841 XL P203842 XXL P203843 Y-XL P203837	Y-M P207110 Y-L P207111 Y-XL P207112
SIZE:	S, M, L, XL, XXL, Y-XL	Y-M, Y-L, Y-XL
COLOUR:	Black / Solar ▲▼	Bolt / Azure ▲▼
MATERIAL:	100% Polyester	

- High roll snug collar with adjustable neck closure system
- Adjustable cuff closures
- Fully adjustable neoprene smooth skin waist band
- Rubberised waterproof fleece lined material to add thermal protection
- Fully taped flatlock seams



SOFTSHELL / JACKET 2.0

EU SKU:	S P203856	S P203861
	M P203857	M P203862
	L P203858	L P203863
	XL P203859	XL P203864
	XXL P203860	XXL P203865
SIZE:	S, M, L, XL, XXL	S, M, L, XL, XXL
COLOUR:	Black / Solar ▲▼	Slate / Lime ▲▼
MATERIAL:	100% Polyester	

- TX-T DWR coated, thermal stretch material
- Windproof & breathable membrane
- Protective & fully adjustable fit
- Fleece lined hand pockets
- Oversized hood with adjustment
- Self-locking eyelet adjustment system



DECK / SHORT 2.0

EU SKU:	S P203866 M P203867 L P203868 XL P203869 XXL P203870
SIZE:	S, M, L, XL, XXL
COLOUR:	Black ▲▼
MATERIAL:	89% Nylon, 11% Spandex 100% Nylon Abrasion Resistant Overlay

- TX-1 DWR coated, stretch, quick-dry & breathable material
- Abrasion resistant seat
- Cargo pockets, angled forward with press stud fastening
- Deep waistband with belt loops

05 BASE LAYERS

Stay warm and dry on the water with Typhoon's range of base layers.

Designed for thermal insulation and moisture management, they're your smart choice in any challenging environment.

Crafted from super-soft, stretch fabrics, these baselayers offer snug, next-to-skin comfort. Cleverly placed seams ensure maximum movement, so you can move freely and comfortably throughout your adventure.

Whether you're braving the cold or facing the elements, Typhoon baselayers keep you protected and ready for anything.





LIGHTWEIGHT / UNDERSUIT

UK SKU:	200102			
EU SKU:	Y-XL P021421	L P021424	S P021422	XL P021425
	M P021423	LB P021428	MB P021427	XXL P021426
SIZE:	YTH-XL, S, M, MB, L, LB, XL, XXL			
COLOUR:	Black ▲▼			
MATERIAL:	TX-T 100% Polyester Fleece 280gsm			

- Lightweight 280gsm fleece
- 1 Tog
- Double action YKK® front zip
- Ankle & thumb loops



NARIN / THERMA LONG SLEEVE TOP

NARIN / THERMA TROUSER

UK SKU:	200210
EU SKU:	S P021460 M P021461 L P021462 XL P021463 XXL P021464
SIZE:	S, M, L, XL, XXL
COLOUR:	Black ▲▼
MATERIAL:	TX-T Thermafleece 84% Polyester 16% Spandex, 250gsm

UK SKU:	200211
EU SKU:	S P021465 M P021466 L P021467 XL P021468 XXL P021469
SIZE:	S, M, L, XL, XXL
COLOUR:	Black ▲▼
MATERIAL:	TX-T Thermafleece 84% Polyester 16% Spandex, 250gsm

- Thermal insulation when wet & dry
- Contour control seams
- Flatlock comfort stitch
- Thumb loops/stirrups



- UPF 50+ sun protection
- Contour control seams
- Flatlock comfort stitch
- 4 way stretch
- Quick dry



FINTRA / LONG SLEEVE RASHY

	Mens			Womens			Youth		
UK SKU:	430421	430420	430422	430441	430440	430442	430461	430460	430462
EU SKU:	S P200226 M P200227 L P200228 XL P200229	S P022516 M P022517 L P022518 XL P022519	S P022520 M P022521 L P022522 XL P022523	10 P200230 12 P200231 14 P200232 16 P200233	10 P022532 12 P022533 14 P022534 16 P022535	10 P022536 12 P022537 14 P022538 16 P022539	Y-S P200234 Y-M P200235 Y-L P200236 Y-XL P200237	Y-S P022548 Y-M P022549 Y-L P022550 Y-XL P022551	Y-S P200238 Y-M P200239 Y-L P200240 Y-XL P200241
	S, M, L, XL			10, 12, 14, 16			Y-S, Y-M, Y-L, Y-XL		
COLOUR:	Graphite ▲▼	Black ▲▼	White ▲▽	Graphite ▲▼	Black ▲▼	White ▲▽	Graphite ▲▼	Black ▲▼	White ▲▽
MATERIAL:	84% Polyester, 16% Spandex								



- UPF 50+ sun protection
- Contour control seams
- Flatlock comfort stitch
- 4 way stretch
- Quick dry



FINTRA / SHORT SLEEVE RASHY

	Mens			Womens			Youth		
UK SKU:	430432	430430	430432	430451	430450	430452	430471	430470	430472
EU SKU:	S P200238 M P200239 L P200240 XL P200241	S P022524 M P022525 L P022526 XL P022527	S P022528 M P022529 L P022530 XL P022531	10 P200242 12 P200243 14 P200244 16 P200245	10 P022540 12 P022541 14 P022542 16 P022543	10 P022544 12 P022545 14 P022546 16 P022547	Y-S P200246 Y-M P200247 Y-L P200248 Y-XL P200249	Y-S P200242 Y-M P200243 Y-L P200244 Y-XL P200245	Y-S P200250 Y-M P200251 Y-L P200252 Y-XL P200253
	S, M, L, XL			10, 12, 14, 16			Y-S, Y-M, Y-L, Y-XL		
COLOUR:	Graphite ▲▼	Black ▲▼	White ▲▽	Graphite ▲▼	Black ▲▼	White ▲▽	Graphite ▲▼	Black ▲▼	White ▲▽
MATERIAL:	84% Polyester, 16% Spandex								

EXPLORE WITH CONFIDENCE

06 FOOTWEAR

Typhoon's footwear range combines quality and functionality, perfect for all watersport activities – from paddling and surfing to wind-driven adventures.

Engineered with advanced technology, our boots and shoes deliver exceptional fit, grip, and warmth. Designed for versatility, our footwear complements the rest of our gear, keeping you on your feet for every journey.





SURFMASTER6.5 / BOOT

UK SKU:	300125
EU SKU:	UK3 / EU36 P200258 UK4-5 / EU37-38 P200259 UK6 / EU39-40 P200260 UK7 / EU41 P200261 UK8 / EU42 P200262 UK9 / EU43 P200263 UK10-11 / EU44-45 P200264 UK12 / EU46-47 P200265 UK13-14 / EU48-49 P200266
SIZE:	UK3 / EU36, UK4-5 / EU37-38, UK6 / EU39-40, UK7 / EU41, UK8 / EU42, UK9 / EU43, UK10-11 / EU44-45, UK12 / EU46-47, UK13-14 / EU48-49,
COLOUR:	Black ▲▼
MATERIAL:	6.5mm REACH CR Neoprene Nylon laminate

- Glued & blind stitch construction
- Comfort curved zip
- Fin retainer
- Top & toe reinforcement



RACELINE4 / BOOT

UK SKU:	300350			
EU SKU:	UK4 / EU37	P200217	UK9 / EU43	P200222
	UK5 / EU38	P200218	UK10 / EU44	P200223
	UK6 / EU39-40	P200219	UK11 / EU45	P200224
	UK7 / EU41	P200220	UK12 / EU46-47	P200225
	UK8 / EU42	P200221		
SIZE:	UK4 / EU37, UK5 / EU38, UK6 / EU39-40, UK7 / EU41, UK8 / EU42, UK9 / EU43, UK10 / EU44, UK11 / EU45, UK12 / EU46-47			
COLOUR:	Black ▲▼			
MATERIAL:	4,5mm REACH CR Neoprene Nylon Laminate			

- Glued & blind stitch construction
- Laced hiking boot
- Stiff sole for support
- Protective upper providing grip when hiking
- Durable rubber on sole, upper, toe & heel
- Inner gusset to limit water ingress at laces
- Laces along full side of the boot creates ultimate fit



VENTOR5 / BOOT

UK SKU:	300128
EU SKU:	UK3 / EU36 P022134 UK4-5 / EU37-38 P022135 UK6 / EU39-40 P022136 UK7 / EU41 P022137 UK8 / EU42 P022138 UK9 / EU43 P022139 UK10-11 / EU44-45 P022140 UK12 / EU46-47 P022141 UK13-14 / EU48-49 P022142
SIZE:	UK3 / EU36, UK4-5 / EU37-38, UK6 / EU39-40, UK7 / EU 41, UK8 / EU42, UK9 / EU43, UK10-11 / EU44-45, UK12 / EU46-47, UK13-14 / EU48-49
COLOUR:	Black ▲▼
MATERIAL:	5mm REACH CR Neoprene Nylon Laminate

- Glued & blind stitch construction
- Lightweight flexible sole
- Rubber reinforced achilles & ankle support
- Toe protection
- Superflex & close fitting
- Pull on fit



WRAP5 / BOOT

UK SKU:	300126			
EU SKU:	UK4/ EU37	P022123	UK9/ EU43	P022129
	UK4-5/ EU37-38	P022124	UK10/ EU44	P022130
	UK5/ EU38	P022125	UK10-11/ EU44-45	P022131
	UK6/ EU39-40	P022126	UK11/ EU45	P022132
	UK7/ EU41	P022127	UK12/ EU46/47	P022133
UK8/ EU42	P022128			
SIZE:	UK4/EU37,UK4-5/EU37-38,UK5/EU38,UK6/EU39-40,UK7/EU-41,UK8/EU42,UK9/EU43,UK10/EU44,UK10-11/EU44-45,UK11/EU45,UK12/EU46-47			
COLOUR:	Black ▲▼			
MATERIAL:	5mm REACH CR Neoprene Nylon Laminate			

- Glued & blind stitch construction
- Reinforced with rubber patches for extra grip & support
- Superior grip soles
- Wrap around fit for ultimate comfort & flexibility



STORM3 / BOOT



UK SKU:	430122				430122	
EU SKU:	Youth			Adults		
	UK12 / EU30-31	P200267	UK6 / EU39-40	P200272	UK10-11 / EU44-45	P200276
	UK1 / EU32-33	P200268	UK7 / EU41	P200273	UK12 / EU46-47	P200277
	UK2 / EU34-35	P200269	UK8 / EU42	P200274	UK13-14 / EU48-49	P200278
	UK3 / EU36	P200270	UK9 / EU43	P200275		
	UK4-5 / EU37-38	P200271				
SIZE:	UK12 / EU30-31, UK1 / EU32-33, UK2 / EU34-35, UK3 / EU36, UK4-5 / EU37-38, UK6/EU39-40, UK7/EU41, UK8/EU42, UK9/EU43, UK10-11/ EU44-45, UK12/EU46-47, UK13-14/EU48-49					
COLOUR:	Black ▲▼					
MATERIAL:	3mm REACH CR Neoprene, Nylon Laminate					

- Glued & blind stitch construction
- Comfort curved side zip
- Toe & heel reinforcement
- Mid weight sole



STORM3 / SHOE



UK SKU:	430123		430123			
EU SKU:	Youth		Adults			
	UK12 / EU30-31	P022108	UK6 / EU39-40	P022113	UK10-11 / EU44-45	P022117
	UK1 / EU32-33	P022109	UK7 / EU41	P022114	UK12 / EU46-47	P022118
	UK2 / EU34-35	P022110	UK8 / EU42	P022115	UK13-14 / EU48-49	P022119
	UK3 / EU36	P022111	UK9 / EU43	P022116		
	UK4-5 / EU37-38	P022112				
SIZE:	UK12 / EU30-31, UK1 / EU32-33, UK2 / EU34-35, UK3 / EU36, UK4-5 / EU37-38, UK6 / EU39-40, UK7 / EU41, UK8 / EU42, UK9 / EU43, UK10-11 / EU44-45, UK12 / EU46-47, UK13-14 / EU48-49					
COLOUR:	Black ▲▼					
MATERIAL:	3mm REACH CR Neoprene, Nylon Laminate					

- Glued & blind stitch construction
- Low profile cut
- Adjustment midfoot strap
- Toe & midfoot reinforcement
- Mid weight sole



- Non-slip rubber sole with 15mm EVA insert
- Quick lacing system with lace lock
- Removable comfort EVA insole
- EVA outsole with drainage system
- Reinforced heel & toe box
- Internal heel with added foam for extra comfort & lockdown

TS10 / SNEAKER

UK SKU:	300380			
EU SKU:	UK3/4 / EU36/37 UK5 / EU38 UK6 / EU39-40 UK7 / EU41	P203272 P203046 P203047 P203048	UK8 / EU42 UK9 / EU43 UK10 / EU44-45 UK11 / EU46	P202479 P203049 P203050 P203051
SIZE:	UK3.4 / EU36/37, UK5 / EU38, UK6 / EU39-40, UK7 / EU41, UK8 / EU42, UK9 / EU43, UK10 / EU44-45, UK11 / EU46			
COLOUR:	Black / Solar ▲▼			
MATERIAL:	Upper: Mesh, Spandex & TPU Outsole: EVA & TPR			

UK SKU:	300381			
EU SKU:	UK3/4 / EU36/37 UK5 / EU38 UK6 / EU39-40 UK7 / EU41	P206319 P203052 P203053 P203054	UK8 / EU42 UK9 / EU43 UK10 / EU44-45 UK11 / EU46	P202480 P203056 P203057 P203058
SIZE:	UK3.4 / EU36/37, UK5 / EU38, UK6 / EU39-40, UK7 / EU41, UK8 / EU42, UK 9 / EU 43, UK 10 / EU 44-45, UK 11 / EU 46			
COLOUR:	Slate / Lime ▲▼			
MATERIAL:	Upper: Mesh, Spandex & TPU Outsole: EVA & TPR			



ESSENTIAL / SAILING BOOT

UK SKU:	300391	300390	
EU SKU:	UK5 / EU38 P203644	UK5 / EU38 P203638	
	UK6 / EU39-40 P203646	UK6 / EU39-40 P203639	
	UK7 / EU41 P202874	UK7 / EU41 P202887	
	UK8 / EU42 P202875	UK8 / EU42 P202503	
	UK9 / EU43 P202876	UK9 / EU43 P202888	
	UK10 / EU44-45 P203647	UK10 / EU44-45 P203640	
	UK11 / EU46 P203648	UK11 / EU46 P203641	
	UK12 / EU47 P202878	UK12 / EU47 P202891	
	SIZE:	UK5/EU38,UK6/EU39-40,UK7/EU-41,UK8/EU42,UK9/EU43,UK10/EU44,UK11/45, UK12/46	
	COLOUR:	Black / Solar ▲▼	Slate / Lime ▲▼
	MATERIAL:	Upper & Outsole: Rubber Lining: Cotton	

- Reinforced heel
- Removable cushioned EVA insole
- Razor cut sole with excellent grip
- Non marking rubber sole
- Padded adjustable tie top



- Water drainage mesh panels
- Adjustable toggle at heel
- Grippy sole
- Box of 6 pairs

AQUATIC / SHOE

UK SKU:		300410	300411	300412	
INFANT EU SKU:	UK5 / EU23	P202914	P202929	P202947	
	UK6 / EU24	P202915	P202930	P202948	
	UK7 / EU25	P202636	P202638	P202644	
	UK8 / EU26	P202916	P202931	P202949	
	UK9 / EU27	P202917	P202934	P202950	
	UK10/EU28	P202918	P202935	P202951	
	UK11/EU29	P202637	P202639	P202645	
	UK12/EU31	P202919	P202936	P202952	
	CHILD EU SKU:	UK13 / EU32	P202920	P202937	P202953
		UK1 / EU33	P202618	P202640	P202646
		UK2 / EU35	P202921	P202938	P202954
		UK3/EU36	P202635	P202641	P202647
COLOUR:		Black / Solar ▲▼	Bolt ▲▼	Lime ▲▼	
MATERIAL:	Upper: Neoprene & Mesh Outsole: TPR Insole: EVA & Spandex				

UK SKU:		300410	300411	300412	
ADULT EU SKU:	UK4 / EU37	P202922	P202939	P202955	
	UK5 / EU38	P202634	P202642	P202648	
	UK6 / EU39/40	P202923	P202940	P202956	
	UK7 / EU41	P202924	P202941	P202957	
	UK8 / EU42	P202617	P202643	P202649	
	UK9 / EU43	P202925	P202942	P202958	
	UK10 / EU44	P202926	P202944	P202959	
	UK11 / EU45	P202927	P202945	P202960	
	UK12 / EU47	P202928	P202946	P202961	
	COLOUR:		Black / Solar ▲▼	Bolt ▲▼	Lime ▲▼
	MATERIAL:	Upper: Neoprene & Mesh Outsole: TPR Insole: EVA & Spandex			



DECK SHOES / CREW II

EU SKU:	EU36	P201099	EU42	P201105
	EU37	P201100	EU43	P201106
	EU38	P201101	EU44	P201107
	EU39	P201102	EU45	P201108
	EU40	P201103	EU46	P201109
	EU41	P201104	EU47	P201110
SIZE:	EU36, EU37, EU38, EU39, EU40, EU41, EU42, EU43, EU44, EU45, EU46, EU47			
COLOUR:	Brown ▲▼			
MATERIAL:	Upper: 100% suede leather Sole: 100% rubber Inside: 100% leather Laces: leather			

- A must-have for both city casual & coastal sailing
- Classic & unisex deck shoe in high-quality suede leather
- Durable & particularly comfortable with soft leather



MERINO / SOCK

EU SKU:	S (40/41) P203106 M (42/43) P203107 L (43/44) P203108 XL (45/46) P203109
SIZE:	S / 40-41, M / 42-43, L / 43-44, XL / 45-46
COLOUR:	Black / Solar ▲▼
MATERIAL:	Merino yarns

- Waterproof & breathable
- 3-layer construction with inner membrane, ideal for wicking away moisture
- Lined with Merino yarns, excellent for regulating temperature & keeping feet dry
- Merino yarns: naturally odour-resistant, soft & gentle on the skin
- Dries extremely quickly - Naturally elastic & retains its shape
- Seams positioned to minimise bulk



COOLMAX / SOCK

EU SKU:	S (40/41) P203109 M (42/43) P203110 L (43/44) P203101 XL (45/46) P203111
SIZE:	S / 40-41, M / 42-43, L / 43-44, XL / 45-46
COLOUR:	Graphite / Lime ▲▼
MATERIAL:	Coolmax FX

- Waterproof & breathable
- 3-layer construction with inner membrane, ideal for wicking away moisture
- Coolmax® yarn with antibacterial silver additive
- Fibre-based moisture management system for rapid evaporation of perspiration
- Lightweight, dries extremely quickly
- Seam positioning minimises bulk



COOLMAX / KNEE HIGH SOCK

EU SKU:	S (40/41) P206494 M (42/43) P206495 L (43/44) P206496 XL (45/46) P206497
SIZE:	S / 40-41, M / 42-43, L / 43-44, XL / 45-46
COLOUR:	Graphite / Lime ▲▼
MATERIAL:	Coolmax FX

- Knee high sock
- Waterproof & breathable
- Multi-layer construction with inner membrane, ideal for wicking away moisture for optimal comfort, durability & protection.
- Coolmax® yarn with antibacterial silver additive
- Fibre-based moisture management system for rapid evaporation of perspiration
- Lightweight, dries extremely quickly
- Seam positioning minimises bulk

07 GLOVES

Typhoon's gloves offer the perfect blend of grip, protection, and durability while maintaining dexterity.

Expertly designed for any situation, they feature high-quality fabrics with just the right amount of stretch and robust grip reinforcements. Built to withstand the toughest conditions, these gloves ensure your hands stay safe and agile on every adventure.





VENTNOR5/ GLOVE

UK SKU:	310231
EU SKU:	XS-S P022238 M-L P022239 XL-XXL P022240
SIZE:	XS-S, M-L, XL-XXL
COLOUR:	Black ▲▼
MATERIAL:	5mm REACH CR Neoprene

- Supersoft, superstretch 5mm neoprene
- Glued & blind stitch construction
- 3D palm print reinforcement
- Pre-bent shape



VENTNOR2 / GLOVE

UK SKU:	310172
EU SKU:	XS-S P200286 M-L P200287 XL-XXL P200288
SIZE:	XS-S, M-L, XL-XXL
COLOUR:	Black ▲▼
MATERIAL:	2mm REACH CR Neoprene

- Supersoft, superstretch 2mm neoprene
- Glued & blind stitch construction
- 3D palm print reinforcement
- Pre-bent shape



PERFORMANCE / FULL FINGER

PERFORMANCE / HALF FINGER



UK SKU:	310351	310351
EU SKU:	Adult	Youth
	S P202740	Y-S P202743
	M P202485	Y-M P202744
	L P202741	Y-L P202745
	XL P202742	
SIZE:	S, M, L, XL	Y-S, Y-M, Y-L
COLOUR:	Slate / Lime ▲▼	
MATERIAL:	72% Nylon, 20% PU 5% Elastane, 3% Neoprene	

UK SKU:	310361	310361
EU SKU:	Adult	Youth
	S P202746	Y-S P202750
	M P202487	Y-M P202751
	L P202747	Y-L P202752
	XL P202748	
SIZE:	S, M, L, XL	Y-S, Y-M, Y-L
COLOUR:	Slate / Lime ▲▼	
MATERIAL:	72% Nylon, 20% PU 5% Elastane, 3% Neoprene	

- Neoprene cuff with watch cut out
- Amara palm
- Durable outer layers in high friction points for extra durability
- Raised rubber print for extra grip
- Pressure points with 3mm foam for extra padding
- Rubber pull tab adjuster with hook & loop



ESSENTIAL / FULL FINGER

ESSENTIAL / HALF FINGER



UK SKU:	310370	310370
EU SKU:	Adult	Youth
	S P202702	Y-S P202703
	M P202488	Y-M P202704
	L P202700	Y-L P202705
	XL P202701	
SIZE:	S, M, L, XL	Y-S, Y-M, Y-L
COLOUR:	Black / Solar ▲▼	
MATERIAL:	80% Nylon, 15% PU 5% Elastane	

UK SKU:	310380	310380
EU SKU:	Adult	Youth
	S P202706	Y-S P202709
	M P202492	Y-M P202710
	L P202707	Y-L P202712
	XL P202708	
SIZE:	S, M, L, XL	Y-S, Y-M, Y-L
COLOUR:	Black / Solar ▲▼	
MATERIAL:	80% Nylon, 15% PU 5% Elastane	

- Breathable, 4-way stretch material (outer)
- Rubber pull tab with hook & loop closure
- Dual abrasion resistant material
- 3mm palm reinforcement
- Raised rubber grip print on palm & fingers

EXPLORE
WITH
CONFIDENCE



08 HEADWEAR

Typhoon blends technology and stylish engineering to offer maximum protection and confidence on the water.

Designed to be strong and crafted to the highest standards, our headwear ensures safety without compromising comfort. Whether you're a beginner or an enthusiast, Typhoon headwear is your trusted companion, keeping you protected no matter the challenge.



The Typhoon logo, consisting of a stylized orange icon of three interlocking shapes and the word "Typhoon" in a bold, orange, sans-serif font, is positioned in the upper right quadrant. Below the logo is a close-up, dark-toned photograph of a steering wheel, showing the central hub and the spokes. The background of the entire page is a solid orange color.

Typhoon



PERFORMANCE+ / WATERSPORTS HELMET

UK SKU:	225666
EU SKU:	S (53-55cm) P202847 M (55-57cm) P202476 L (57-59cm) P202845
SIZE:	S (53-55cm), M (55-57cm), L (57-59cm)
COLOUR:	Black / Solar ▲▼
MATERIAL:	ABS Outer EVA Foam Liner

UK SKU:	225667
EU SKU:	XS (51-53cm) P202864 S (53-55cm) P202865 M (55-57cm) P202477 L (57-59cm) P202866
SIZE:	XS (51-53cm), S (53-55cm), M (55-57cm), L (57-59cm)
COLOUR:	Lime ▲▼
MATERIAL:	ABS Outer EVA Foam Liner

- ABS outer shell
- Turn wheel adjuster
- Fully vented
- Quick release buckle with nylon adjustable chin strap
- Moulded EVA foam liner with removable EVA ear protectors
- BS EN 1385:2012 CE approved



ESSENTIAL / WATERSPORTS HELMET

UK SKU:		225670	225671	225672	225673
EU SKU:	XS-S (50-54cm) M (54-58cm) L-XL (58-62cm)	P206776 P206777 P206779	P206781 P206782 P206783	P206785 P206786 P206787	P206892 P206893 P206894
COLOUR:		Red ▲▼	Bolt ▲▼	Lime ▲▼	Black ▲▼
MATERIAL:	ABS Outer EVA Foam Liner				

- ABS outer shell
- Turn wheel adjuster
- Fully vented
- Quick release buckle with nylon adjustable chin strap
- Moulded impact absorption foam liner
- BS EN 1385:2012 CE approved

EXPLORE WITH CONFIDENCE



09 LUGGAGE

When your adventures take you to the edge, Typhoon's waterproof luggage is there to keep your gear safe and dry.

With roll-top closures, waterproof zips, integrated whistles, and welded seams, our bags are built to withstand the toughest conditions. Adjustable straps and smart pockets make packing a breeze, giving you the flexibility you need for any journey. Pack up, head out, and explore with confidence.





OSEA / DRY DUFFEL 2.0

UK SKU:	360361-0040 / 0060	360362-0040 / 0060
EU SKU:	40L P202494 60L P202496	40L P202495 60L P202497
SIZE:	40L, 60L	
COLOUR:	Black / Solar ▲▼	Slate / Lime ▲▼
MATERIAL:	500D Tarpaulin PVC REACH	

- 100% Waterproof with internal welded seams
- 500D REACH compliant material
- Adjustable roll top buckle closure with compression straps
- Ergonomic padded backpack system
- Adjustable shoulder & waist straps
- Whistle buckle attachment at chest strap for added safety
- External front waterproof zip pocket for quick access to belongings
- Compression valve
- Front Molle loops with bungee cord for attaching extra gear



OSEA / DRY BACKPACK 2.0

UK SKU:	360351-0020 / 0040	360352-0020 / 0040
EU SKU:	20L P202498 40L P202500	20L P202499 40L P202502
SIZE:	20L, 40L	
COLOUR:	Black / Solar ▲▼	Slate / Lime ▲▼
MATERIAL:	500D Tarpaulin PVC REACH	

- 100% Waterproof with internal welded seams
- 500D REACH compliant material
- Adjustable roll top buckle closure with compression straps
- Ergonomic padded backpack system
- Adjustable shoulder & waist straps
- Whistle buckle attachment at chest strap for added safety
- External front waterproof zip pocket for quick access to belongings
- Compression valve
- 2x outer mesh pockets
- Front Molle loops with bungee cord for attaching extra gear
- Internal padded laptop/tablet sleeve



OSEA / WAISTPACK

UK SKU:	360391-0001
EU SKU:	P203104
SIZE:	ONE SIZE
COLOUR:	Black ▲▼
MATERIAL:	210D Ripstop with TPU

- 210D REACH compliant material
- Internal welded seams
- Adjustable waist strap with buckle attachment
- Flexible & lightweight



SEATON / DRY ROLL TOP BAG

UK SKU:	360340		
EU SKU:	5L P022356	20L 71851	
	10L P022357	40L 71852	
	15L P022358	60L 71853	
SIZE:	5L / 10L / 15L / 20L / 40L / 60L		
COLOUR:	Yellow / Black ▲▼		
MATERIAL:	5L / 10L / 15L / 20L: 250D Tarpaulin PVC REACH	40L / 60L: 500D Tarpaulin PVC REACH	

- 100% Waterproof with internal welded seams
- Anti slip, heavy duty base
- Front clear window to help locate contents easily
- Adjustable shoulder carry strap
- Roll top closure with D-ring attachment points
- Compression valve included on 40L & 60L size only
- Typhoon outer cloth drawstring bag included



3 PIECE / DRY BAG SET

UK SKU:	360331-0001
EU SKU:	P203105
SIZE:	ONE SIZE (2L, 5L, 10L)
COLOUR:	Multi-Colour ▲▼
MATERIAL:	PU Coated 75D Ripstop Nylon

- Taped inner seams
- Roll top closure
- Outer drawstring bag included

10 EQUIPMENT

All the essentials for your aquatic adventures with Typhoon's selection of accessories.

Built with high-quality materials and construction, these products are designed for durability, performance and fun.





L-SERIES / SUNGLASSES

UK SKU:	482130
EU SKU:	P202507
SIZE:	ONE SIZE
COLOUR:	Black / Solar ▲▼
MATERIAL:	Frame: TPX Lens: TAC

- Floating frame
- Soft touch on nose bridge
- Polarised & anti seawater corrosion lens
- UV 400 protection (Cat 3)
- Dust pouch included



L-SERIES / SUNGLASSES - WOMENS

UK SKU:	482160
EU SKU:	P202514
SIZE:	ONE SIZE
COLOUR:	Frosted Solar ▲▼
MATERIAL:	Frame: TPX Lens: TAC

- Floating frame
- Polarised & anti seawater corrosion lens
- UV 400 protection (Cat 3)
- Dust pouch included



S-SERIES / SUNGLASSES

UK SKU:	482140
EU SKU:	P202510
SIZE:	ONE SIZE
COLOUR:	Black / Solar ▲▼
MATERIAL:	Frame: EMS Lens: TAC

- Floating frame
- Removable side shields to block glare
- Polarised & anti seawater corrosion lens
- UV 400 protection (Cat 3)
- Dust pouch included



K-SERIES / SUNGLASSES



UK SKU:	482150
EU SKU:	P202512
SIZE:	ONE SIZE
COLOUR:	Clear / Solar ▲▼
MATERIAL:	Frame: TPX Lens: TAC

- Floating frame
- Soft touch on nose bridge
- Polarised & anti seawater corrosion lens
- UV 400 protection (Cat 3)
- Dust pouch included



S-SERIES / VISOR

UK SKU:	482170
EU SKU:	P202516
SIZE:	ONE SIZE
COLOUR:	Black / Solar ▲▼
MATERIAL:	Frame: TR90 Lens: TAC

- Soft touch arms
- Semi-rimless design
- Wraparound lens
- Polarised lens
- UV 400 protection (Cat 3)
- Dust pouch included



FLOATING 2 / SUNGLASSES RETAINER

EU SKU:	P204020
SIZE:	ONE SIZE
COLOUR:	Variety of colours

- Floating sunglasses retainer
- Synthetic jersey tube with foam padding
- Fastening latex rings to attach to sunglasses' arms
- Versatile fixing point
- Pack of 6
- Variety of colours
- Suitable for all sunglasses & spectacles



FLOATING 3 / SUNGLASSES RETAINER

EU SKU:	P204022
SIZE:	ONE SIZE
COLOUR:	Variety of colours

- Floating sunglasses retainer
- Synthetic jersey tube with foam padding
- Fastening rings to attach to sunglasses' arms
- Versatile fixing point
- Pack of 6
- Variety of colours
- Suitable for all sunglasses & spectacles



FLOATING 4 / SUNGLASSES RETAINER

EU SKU:	P204023
SIZE:	ONE SIZE
COLOUR:	Variety of colours

- Floating sunglasses retainer
- Lightweight rope with two floats
- Fastening rings to attach to sunglasses' arms
- Versatile fixing point
- Pack of 6
- Variety of colours
- Suitable for all sunglasses & spectacles



NEOPRENE / SUNGLASSES RETAINER

EU SKU:	P204021
SIZE:	ONE SIZE
COLOUR:	Variety of colours

- Neoprene sunglasses retainer
- Fastening sleeves to attach to sunglasses' arms
- Versatile fixing point
- Pack of 6
- Variety of colours
- Suitable for all sunglasses & spectacles



DUO / SUNGLASSES RETAINER

EU SKU:	P204025
SIZE:	ONE SIZE
COLOUR:	Variety of colours

- Lightweight rope with clamp ring
- Double fixing point to attach to sunglasses' arms
- Pack of 6
- Variety of colours
- Suitable for all sunglasses & spectacles



FLOATING DUO / SUNGLASSES RETAINER

EU SKU:	P204024
SIZE:	ONE SIZE
COLOUR:	Variety of colours

- Lightweight rope with large foam float & clamp ring
- Double fixing point to attach to sunglasses' arms
- Pack of 6
- Variety of colours
- Suitable for all sunglasses & spectacles



MASK & SNORKEL COMBO SET

UK SKU:		320384-0001 320383-0001	320384-0002 320383-0002	320384-0003
EU SKU:	ONE SIZE / UNI - Adult ONE SIZE / UNI - Child	P022296 P022293	P022297 P022294	P022298
SIZE:		ADULT / CHILD	ADULT / CHILD	ADULT
COLOUR:		▲▼ Blue	▲▼ Silver	▲▼ Yellow
MATERIAL:	Mask: PC, Silicone & POM Snorkel: PVC, Silicone, PC & POM			

MASK

- Tempered safety glass
- Silicone skirt
- CE & UKCA approved

SNORKEL

- Large bore tube
- Semi dry top
- Purge valve
- Mesh bag included



T-JET / ADJUSTABLE FOOT FIN

UK SKU:		330250	330252	330251
EU SKU:	Childs			
	S-M (8-13) L-XL (1-4)	P022329 P022330	P022337 P022338	P022333 P022334
Adults				
	S-M (4-7.5) L-XL (8-10.5)	P022331 P022332	P022339 P022340	P022335 P022336
COLOUR:		▲▼ Blue	▲▼ Silver	▲▼ Yellow
MATERIAL:	PP, TPR, POM			

- Adjustable heel
- Open heel strap
- Soft foot holding
- Mesh bag included

11 TOWABLES

Adrenaline-fuelled design,
built for the ride.

Spin into action with Typhoon's Surge X range, precision-built towables made for high-speed, high-energy days on the water. Whether you're chasing the rush solo or doubling up for more action, these models deliver pure performance with zero distractions.





SURGE X / 1 PERSON

EU SKU:	P206987
SIZE:	ONE SIZE
COLOUR:	Lime ▲▼
MATERIAL:	Bladder: 24g PVC Outer cover: Durable nylon partial cover

- 1 year warranty
- 420 denier nylon cover
- 24 gauge PVC
- 1 rider
- 4 neoprene knuckle guard handles
- Speed valve
- 1 water drain
- Tow loop harness
- Dimensions
 - Inflated size: Ø46 x 17,3" | Ø117 x 44cm
 - Deflated: 54" | 137cm



SURGE X PLUS / 2 PERSON

EU SKU:	P206988
SIZE:	ONE SIZE
COLOUR:	Solar ▲▼
MATERIAL:	Bladder: 24g PVC Outer cover: 840 D nylon (under coverage)

- 1 year warranty
- 840 denier nylon cover
- 24 gauge PVC
- 2 riders
- 4 neoprene knuckle guard handles
- Speed valve
- 1 water drain
- Tow loop harness
- Dimensions
 - Inflated: 51.9 x 70.8 x 16.9" | 132 x 180 x 43cm
 - Deflated: 57" x 74,8" | 145 x 190 cm

TOW ROPE / 55FT

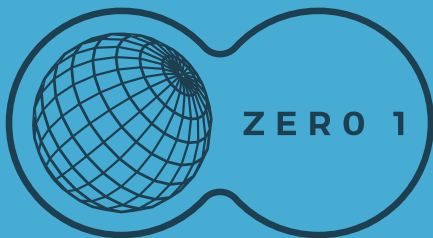
EU SKU:	P207464
SIZE:	ONE SIZE

- 17m resist. 1800kg

BRIDLE / 8FT

EU SKU:	P207465
SIZE:	ONE SIZE

- 1000kg - 2 pers



INTRODUCING EARTH ZERO1

At Typhoon, we recognise the urgent need to shift towards more sustainable and conscious practises.

That's why we're proud to introduce Earth Zero 01, our pledge to gradually move towards zero waste and minimise our environmental impact. With the understanding that this is a long-term commitment,

Earth Zero 1 represents our dedication to protecting our planet. We have one Earth, so let's take care of it together.

Explore with confidence, sustain with purpose.



WARRANTY



3 YEAR WARRANTY
scan QR code for more information

Typhoon drysuits come with a one-year warranty on materials and workmanship excluding neoprene and latex neck, wrist and feet seals, product seconds and samples.

To receive an extra two years warranty on workmanship you must immediately upon purchase register your product, this can be done online by visiting:
www.typhoon-int.co.uk

All other Typhoon products come with a one-year warranty, this warranty is only valid to the original purchaser and for products purchased as first quality originally, our liability extends to the workmanship, materials and return carriage to the purchaser.

Damage due to abuse, misuse or obvious neglect, failure to maintain the product properly, consequential damages, incidental damages or damages to persons or property are not covered under this warranty. This warranty in no way effects your statutory rights.



SIZE CHARTS

For a comprehensive and up to date list of product size charts, visit:

www.typhoon-int.co.uk/size-charts

or simply scan the QR code.



TERMS & CONDITIONS

Full terms & conditions can be found on our website:

www.marathonleisure.co.uk/terms-conditions

or simply scan the QR code.

DISCLAIMER

The content of this range folder is considered to be true and correct at the time of print, however changes to product and legislation after the time of print may impact on the accuracy of the information. This could change without notice. Typhoon International is not liable for the accuracy of the information printed or stored by a user.

EXPLORE WITH CONFIDENCE



Distributed by Marathon Leisure



www.typhoon-int.co.uk / sales@marathonleisure.co.uk / 02392 637711

Typhoon International Limited, Limerick Road, Redcar, Cleveland, TS10 5JU