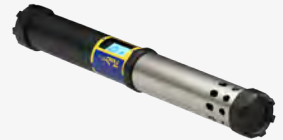
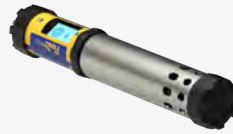




Environmental Water
Quality Brochure

Aqua TROLL® Multiparameter Sondes

Our five- and seven-port multiparameter sondes come with interlocking, interchangeable sensors and an optional antifouling wiper. All are available with an optional vented or non-vented pressure sensor.



Aqua TROLL 500

5-port, 4-sensor
sonde + wiper

Up to 100 m (325 ft)
deployment

Aqua TROLL 600

5-port, 4-sensor
sonde + wiper

Up to 200 m (650 ft)
deployment

Internal logging

Internally powered
(6+ month battery
life typical)

Aqua TROLL 700

7-port, 6-sensor
sonde + wiper

Up to 250 m (820 ft)
deployment

Aqua TROLL 800

7-port, 6-sensor
sonde + wiper

Up to 250 m (820 ft)
deployment

Internal logging

Internally powered
(6+ month battery
life typical)

Features

- Fast-response sensors reach stability in seconds.
- A mini calibration cup onboard saves thousands in calibration solution per year.
- 3D factory calibration ensures sensors are linear across their full range.
- Active and passive antifouling extends intervals between field visits.
- Wet-mate connectors prevent water damage.
- Flexible output options include Modbus/RS-485, SDI-12, and Bluetooth®.

water
simplified.

Customize your Aqua TROLL 500, 600, 700 or 800 with these sensor options:

- | | | |
|----------------------------------|--------------------------|------------------|
| ✓ Temperature | ✓ Chlorophyll a | ✓ Rhodamine WT |
| ✓ Conductivity | ✓ Phycocyanin (BGA-PC) | ✓ Fluorescein WT |
| ✓ pH/ORP | ✓ Phycoerythrin (BGA-PE) | ✓ Ammonium (ISE) |
| ✓ Rugged Dissolved Oxygen (RDO®) | ✓ FDOM | ✓ Chloride (ISE) |
| ✓ Turbidity | ✓ Crude Oil | ✓ Nitrate (ISE) |

Aqua TROLL 400 Multiparameter Probe



This durable, low-maintenance probe is designed for months of unattended operation in harsh conditions. 3D factory calibration and field-tested sensor technologies ensure stable, accurate results, while flexible communication protocols (4-20 mA, SDI-12, RS-485) enable easy data access.

Measures and records

- Conductivity
- Dissolved oxygen (optical RDO®)
- pH/ORP
- Temperature
- Water level and water pressure (absolute)

CTD Instruments

Sub-1-inch design fits any deployment. Titanium construction prevents corrosion. 3D factory calibration ensures full-range sensor accuracy. And dynamic density compensation collects accurate water level data in environments where salinity may vary. Available in flexible communication protocols (4-20mA, SDI-12, RS-485).



Aqua TROLL 100

Measures and records

- Conductivity
- Temperature



Aqua TROLL 200

Measures and records

- Conductivity
- Temperature
- Water level
- Pressure

RDO® Instruments

Ideal for handheld or long-term deployment in fresh water or saltwater environments, our RDO instruments deliver accurate DO and temperature measurements with minimal maintenance. Rugged construction and the most abrasion-resistant sensor cap on the market protect your data and extend instrument life. The RDO Smart Sensor Cap stores calibration coefficients for automatic, uncomplicated setup—no calibration, conditioning or membranes required.



RDO Blue

- Includes Modbus/RS485 communication protocol
- Ryton construction and complete internal potting for enhanced reliability

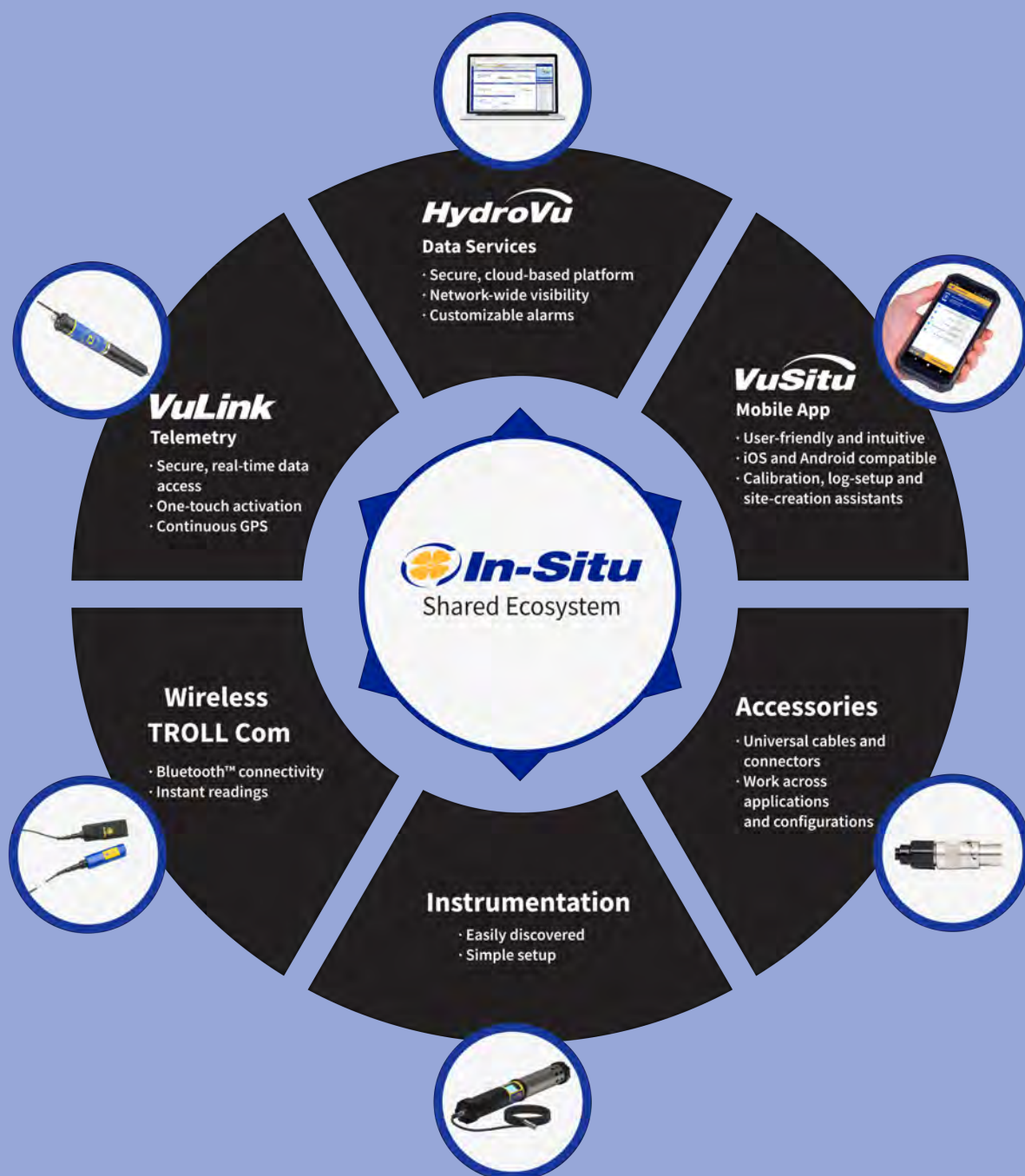


RDO Pro-X

- Flexible communication protocols (Modbus/RS485, SDI-12 and 4-20mA)
- Available with twist-lock connector in custom cable lengths or with fixed-length stripped and tinned cable.

Connected technology that's easy to use.

All In-Situ equipment, telemetry, software, cables and accessories are designed to work together in a shared ecosystem for flexible configurations and seamless expansion of your monitoring network.

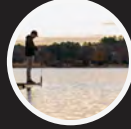


Applications

Rugged, reliable instrumentation, telemetry and software simplify water quality monitoring in a range of applications.



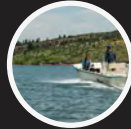
Surface Water Monitoring



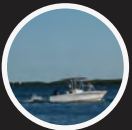
Profiling



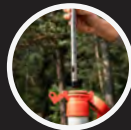
Groundwater Monitoring



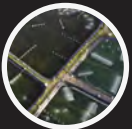
Source Water Monitoring



Coastal Monitoring



Saltwater Intrusion



Aquaculture



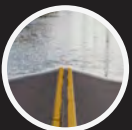
Dredging Monitoring



HAB Monitoring



Remediation



Stormwater Monitoring



Low-Flow Sampling

In-Situ Support

Reliable equipment is just the beginning. Our knowledgeable technical support and service teams provide timely assistance to ensure peak performance in the field.



water
simplified.

221 E. Lincoln Ave.,
Fort Collins, CO 80524

1-800-446-7488 (toll free in U.S. and Canada)
1-970-498-1500 (U.S. and international)
www.in-situ.com

© Copyright 2023 In-Situ Inc.
All rights reserved.