

hepair 6000

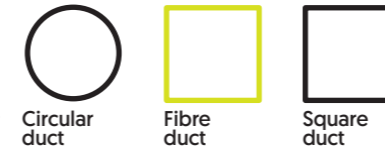
The ultimate solution in negative suction for duct cleaning

This negative pressure vacuum cleaner offers a power of suction of 6200 m³/h of maximum flow, which allows face all jobs no matter how demanding they are. It has an integrated variator to adapt the suction of air at the consumption of the outlet, optimizing the power of the equipment.

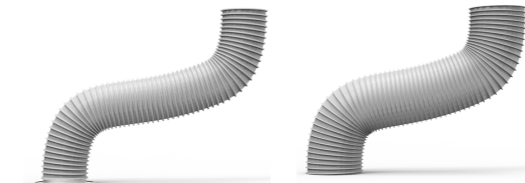
Hepair 6000 is a single phase vacuum cleaner that allows connect to any power outlet. Fast, versatile and power in a single unit. Its design is compact to facilitate its total sealedness. It can be transported both horizontally and vertically, and can be used for ducts from 300 mm to 1200 mm. It includes an acoustic filter clogging indicator to know when a change is needed.



APPLICATIONS ▼



OPTIONAL ACCESSORIES ▼



VACUUM HOSE
Ø300 mm - 5 m long

AC3101321

VACUUM HOSE
Ø400 mm - 5 m long

AC3101320

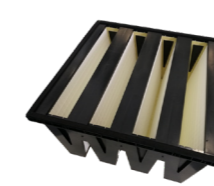


DECANTER SLEEVE.
T-shape, 120 l tank.
2.5 m hose Ø400 mm included.
AC3101322



BAG FILTER F7

AC3101316



ABSOLUTE FILTER HEPA 13

AC3101317



ADAPTER "Y" Ø300.

For fitting the sleeve in square and circular ducts.

AC3101406

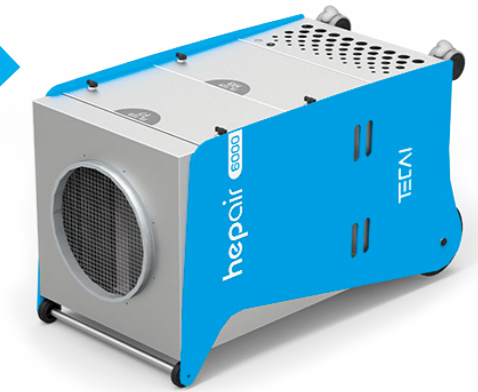


ADAPTER "Y" Ø400.

For fitting the sleeve in square and circular ducts.

AC3101405

Easy to transport, both horizontally and vertically



TECHNICAL FEATURES

hepair₆₀₀₀

| | | |
|---------------------------|--|----------|
| Supply voltage | 220 V | 110 V |
| Electric consumption | 50-60 Hz | 50-60 Hz |
| Max. flow rate | 6200 m ³ /h - 3650 cfm | |
| Flow rate with filter F7 | 5350 m ³ /h - 3150 cfm | |
| Flow rate with filter H13 | 4800 m ³ /h - 2825 cfm | |
| Max Depression | 1300 Pa - 0,2 psi | |
| Filtration level 1 | F7 | |
| Filtration level 2 | H13 | |
| Degree of separation | >99% | |
| Engine power | 1250 W | |
| Current consumption | 5,6 A | 11,2 A |
| Noise level | 80 dB | |
| Dimensions [L x W x H] | 670 x 750 x 1300 mm 26,4 x 29,5 x 51,2 inch | |
| Weight without filters | 80 kg 176 lb | |
| Weight with filters | 100 kg 220 lb | |

