



High-performance polymer engine mounting systems  
for marine and industrial applications

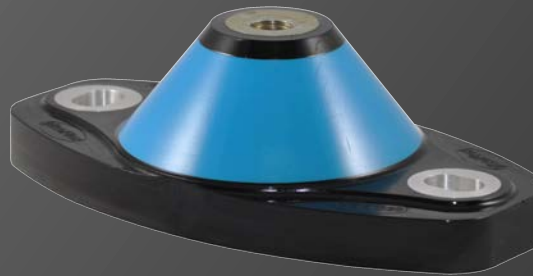
# Isoflex Product Lines



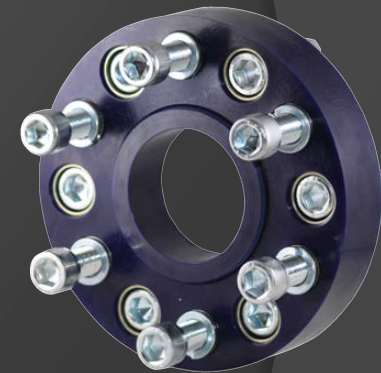
Direct retrofits and replacements for most common marine engines and mounts



Isoflex Engine Mounts  
(Marine and Industrial)



Isoflex General Purpose  
Machinery Mounts



Isoflex Flexible  
Gearbox Couplings

# Isoflex the Company



Isoflex is a leading designer and manufacturer of high quality vibration isolating products used in:

- ✓ OEM manufacture
- ✓ New installations
- ✓ Retrofits
- Isoflex Technologies Pty Ltd established in 2005 in Australia's Gold Coast.
- Sold factory direct through U.S headquarters in Deerfield Beach, Florida.
- Isoflex mounts offer at least 85% vibration isolation at the worst case engine idle scenario.
- Designed to withstand the rigors of marine environments, extending into arduous mining applications as well.

***Isoflex provides direct replacements for most common marine engines and mounts.***



## Why Isoflex?

- ✓ Same day technical assistance
- ✓ Fast shipping times
- ✓ Available factory direct
- ✓ In-house ability to calculate and specify the application

# Isoflex Product Applications



## Marine Engines & Gearboxes

Passenger ferries & catamarans  
Patrol boats  
Pilot boats  
RHIBS  
Tugboats  
Fishing and dive vessels  
Pleasure craft

## Industrial

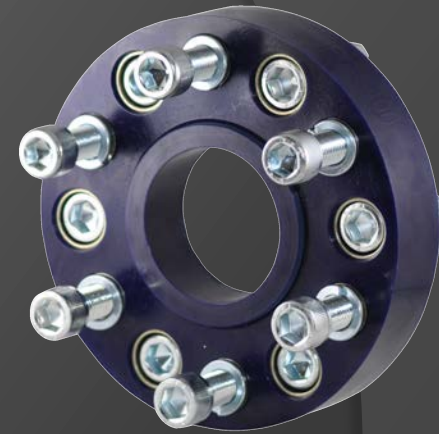
Generators  
Pumps & compressors  
Machinery  
HVAC  
RVs  
Off-highway and construction  
Mining



# Isoflex Gearbox Couplings



- ✓ Isolates drive line vibration, propeller pulse and gear chatter
- ✓ Helps alleviate drive line misalignment
- ✓ Prevents binding and wear of the drive bearings
- ✓ Assists engine mounts to do their job by allowing controlled engine movements to isolate vibration
- ✓ Acts as a sacrificial link, designed to fail before gearbox damage occurs
- ✓ Softens directional changes

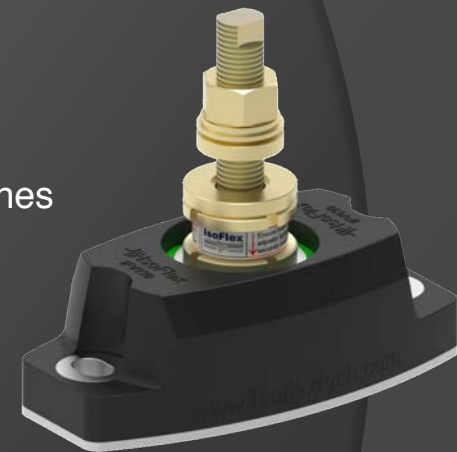


# Isoflex Engine Mounts



## Specs and Fabrication

<b>Load per mount:</b>	100 – 2000 kg / 220 to 4400 lb
<b>Construction:</b>	Polymer / stainless steel / marine alloy
<b>Resilient Element:</b>	High performance engineering polyurethanes
<b>Suitable for:</b>	New builds, retrofits, replacements
<b>Certification:</b>	DNV Type Approved





# The Isoflex USP – Engine Mounts



## *Superior Resistance*

Polymer base is highly resistant to corrosion and impact, a common failure on other mounts.

## *Adjustability*

- ✓ Swivel adjuster system
- ✓ Allows for 4 degrees of bracket-to-bearer misalignment
- ✓ Increases stud strength by a factor of 3
- ✓ Reduces point loading



Adjusting stud assembly

# The Isoflex USP – Engine Mounts



## *Flexibility*

8 durometer core options to fine tune the specific application.

## *Scope*

Range of mounts that accommodates engine range up to 60 liter.





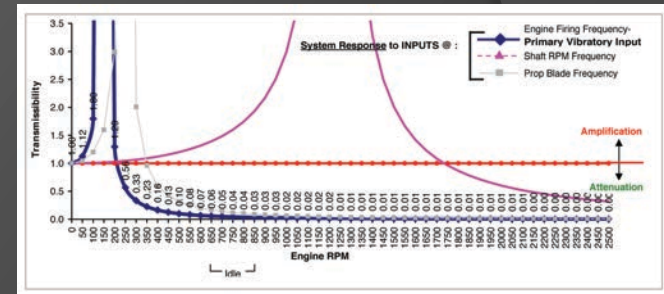
# The Isoflex USP



## *Precise Isolation*

Pre-installation software modeling identifies the level of vibration isolation through a range of RPM:

- ✓ Optimizes mount selection
- ✓ Identifies thrust load and the level of isolation



*Critical in commercial applications*

# Isoflex Competitive Advantage



- |   |   |
|---|---|
| DNV Type Approved                             | ✓ |
| Corrosion resistance                          | ✓ |
| Adjustable swivel system                      | ✓ |
| Modular                                       | ✓ |
| Variable spring rates                         | ✓ |
| Mount can be used in<br>pleasure and Mil spec | ✓ |
| Mount stability                               | ✓ |
| Fine tune adjustment                          | ✓ |
| Factory pre-lubed                             | ✓ |



*“The trusted choice in engine vibration solutions.”*

**isoflextech.com**

**isoflex.com.au**