

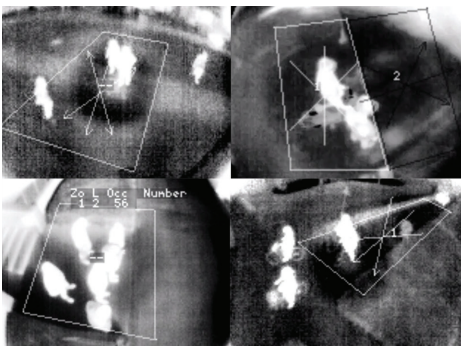


SMART CITY SENSOR

TRAFIONE

TrafiOne is an all-round detection sensor for traffic monitoring and dynamic traffic signal control. Offered in a compact and affordable package, the TrafiOne uses thermal imaging and Wi-Fi technology to adapt traffic signals based on the presence detection of vehicles, bicycles and pedestrians, while also generating high resolution data at intersections and in urban environments. As a result, TrafiOne helps traffic engineers improve traffic flows, monitor congestion, enhance safety for vehicles and vulnerable road users, collect data, and measure travel and delay times for different transport modes.

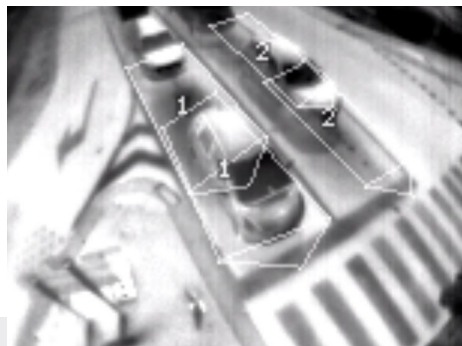
www.flir.com/Traffic



Thermal Imaging Sensor

TrafiOne allows for more dynamic control of traffic signals 24/7.

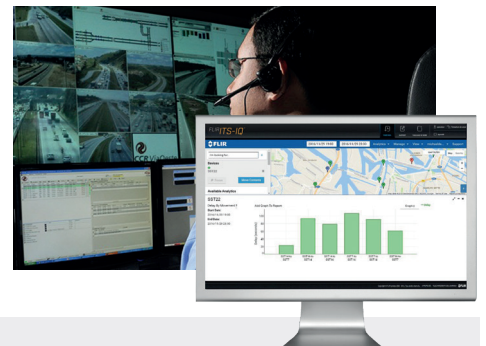
- Sees traffic in total darkness, through shadows and sun glare
- Detects the presence of vehicles and bicyclists at the stopbar
- Detects pedestrians and bicyclists in the crossing or on the curb
- Connects to traffic signal controller via dry contact outputs or TCP/IP network communication



Wi-Fi Technology

Secure wireless communication allows for quick and easy configuration of detection zones.

- Monitors Mac addresses of Wi-Fi enabled devices, such as smartphones
- Determines travel and route times along road segments
- Measures queue delay times at intersections via Wi-Fi signal strength



FLIR ITS-IQ

TrafiOne information is processed using cloud-based data analysis.

- FLIR ITS-IQ provides critical understanding of road network performance
- Smart analytics transform information into useful traffic insights
- User-friendly dashboard lets traffic engineers generate reports and take measures, when needed

TECHNICAL SPECIFICATIONS

| System Overview | |
|-------------------------------|--|
| Functionalities | Curbside and on-crossing pedestrian and bicycle presence detection Visual HD streaming video (optional license) Stopbar vehicle and bicycle presence detection (optional license) Wi-Fi monitoring (optional license) Pedestrian counting (optional license) |
| # detection zones | 8 vehicle presence zones 8 pedestrian presence zones |
| Configuration | Web page via secure Wi-Fi or Ethernet |
| Thermal Sensor | |
| Resolution | 160 x 120 |
| Frame rate | 9 FPS |
| Detector type | Focal Plane Array (FPA) uncooled VOx microbolometer LWIR sensor, 8 to 14 μm wavelength |
| Streaming Video | RTSP |
| Compression | H.264, MPEG-4 |
| Visual Sensor | |
| Resolution | 1080 x 1920 HD color CMOS |
| Frame rate | 30 fps |
| Lens HFOV | 95° |
| Streaming Video | RTSP |
| Compression | H.264, MPEG-4, MJPEG |
| Housing | |
| Material | Aluminum housing with PC GF10 sunshield |
| Bracket | PA GF30 mounting clamps and aluminum tube |
| Power, outputs, communication | |
| Input power | 12 – 42 V AC/DC |
| Power consumption | Average 6 Watt, peak 7 Watt |
| Outputs | 1 N/O and 1 N/C dry contacts direct 16 N/C dry contacts via TI BPL2 or TI BPL2 EDGE interface |
| Ethernet | 10/100 MBps |
| PoE | PoE A and PoE B |
| Powerline Communication | Up to 2 MBps via TI BPL2 or TI BPL2 EDGE interface |
| Wi-Fi | IEEE 802.11 type b,g,n EIRP < 100mW |
| Environmental | |
| Shock & Vibration | NEMA TS2 specs |
| Materials | All weatherproof UV-resistant |
| IP Rating | IP67 |
| Temperature range | -40°C to +60°C / -40°F to +140°F / |
| FCC | FCC part 15 class A |
| Regulatory | |
| EU Directives | EMC 2014/30/EU, RoHS 2011/65/EU |

| Product specific | TrafiOne 195 | TrafiOne 156 |
|--|---|--|
| Part number | 10-7070 | 10-7075 |
| HFOV | 95° | 56° |
| Detection distance (depending on installation height) | vehicle & bicycle presence: 0 - 20m, 0 - 65.6ft pedestrian & bicycle presence: 0 - 12m, 0 - 39ft | vehicle & bicycle presence: 10 - 35m, 33 - 115ft pedestrian & bicycle presence: 10 - 25m, 33 - 82ft |
| Installation height | 3.5 - 6m / 11.4 - 19.6ft | 5.5 - 8m / 18 - 26ft |

Specifications are subject to change without notice. For the most up-to-date specs, go to www.flir.com

CORPORATE HEADQUARTERS
FLIR Systems, Inc.
27700 SW Parkway Ave.
Wilsonville, OR 97070
PH: +1 877.773.3547

FLIR ITS
Hospitaalweg 1B
B-8510 Marke
Belgium
PH: +32 (0)56 37 22 00

www.flir.com
NASDAQ: FLIR

Equipment described herein may require US Government authorization for export purposes. Diversion contrary to US law is prohibited. Imagery for illustration purposes only. Specifications are subject to change without notice. ©2018 FLIR Systems, Inc. All rights reserved. (Created 10/18)

18-1976-ITS_US



The World's Sixth Sense®