

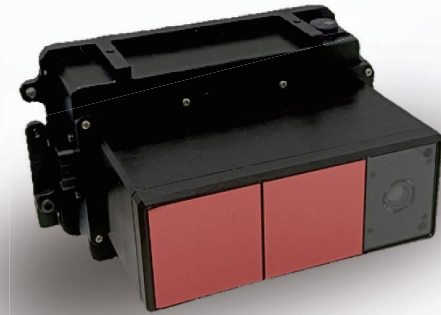


Compertum — a Latin word for “reliability”  
 Delivering next-generation LiDAR-camera solutions



# CMS-FE5

## A FLASH SPAD-BASED LIDAR FOR RAILWAY OBJECTS DETECTION COMPATIBLE WITH NVIDIA® ORIN™



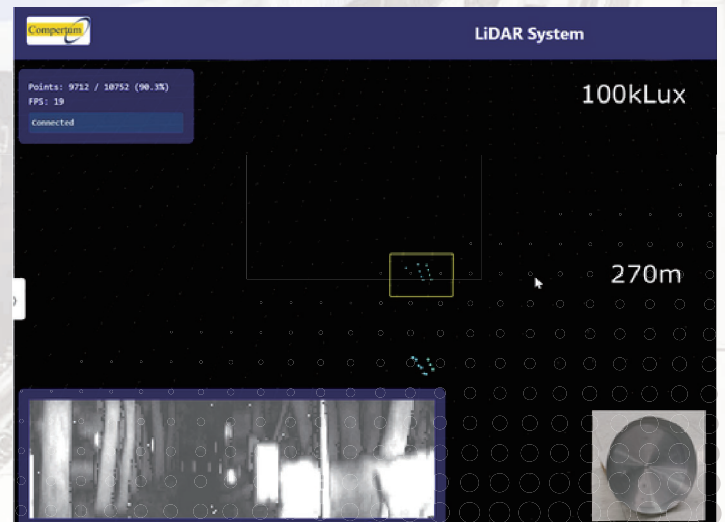
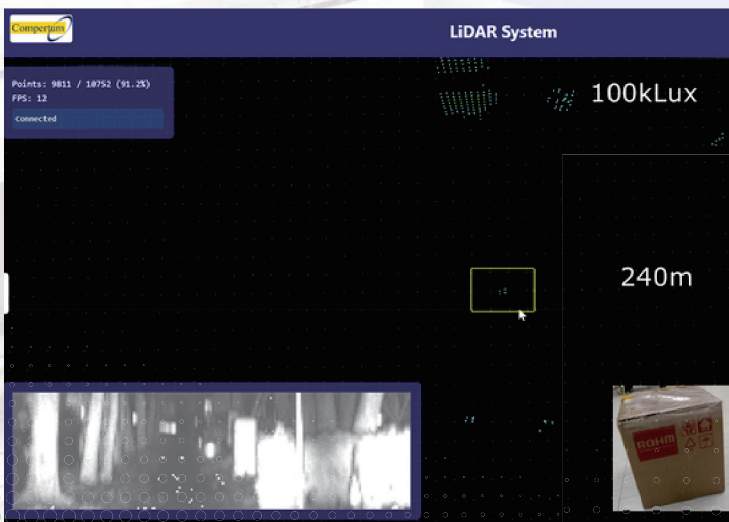
The CMS-FE5 LiDAR is an industrial-grade Flash SPAD-based LiDAR specifically designed for long range application. It offers 3D point cloud and an optional 2D camera views, focusing on railway object identification.

This sensor fusion aim to ensure accurate distance measurement. Our patented LiDAR module offers high reliability, low cost, and scalable high-volume solutions to customers.

**1 LONG-RANGE DETECTION**  
 DETECTS OBJECTS 20×20×25 CM<sup>3</sup>  
 BOX UP TO 240 M

**2 ULTRA HIGH-RESOLUTION**  
 ACHIEVES ULTRA-FINE ANGULAR  
 RESOLUTION OF 0.034° (H & V)

**3 SOLID-STATE RELIABILITY**  
 NO MOVING PARTS DESIGN  
 ENSURES HIGH DURABILITY



### Sensor Specifications

Laser Wavelength (nm)	940	Horizontal FOV (°)	6.6	Frame Rate (Hz)	10
Laser Safety	Class 1 eye safety	Vertical FOV (°)	1.9	Points Per Second	107,520
Dimension (mm)	153 x 102 x 122	Resolution (°)	0.034 x 0.034	Range (m) 10%, 100kLux	250
Weight (g)	1264	Number of Lines	56	Blind Spot (m)	0.3

Ready to integrate CMS-FS5 into your system? Contact us for samples and support:

+886-3-5771500

www.compertum.com

sales@compertum.com