

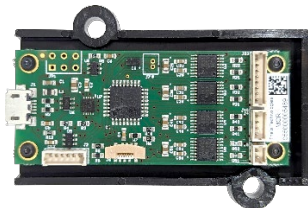


## MCR IQ™ Motor Control Board

MCR IQ™ 600, MCR IQ™ 500, MCR IQ™ 400

- ✓ Designed to control Theia motorized lenses.
- ✓ Controls **P-iris, focus and zoom motors, and IR filter switcher**
- ✓ Reads photo interrupter limit switches
- ✓ **Ease of use** software included: MCR IQ™ application with Python driver module and graphical user interface
- ✓ Single 5V supply (via USB or pin connector)
- ✓ Over-current and over-temperature protection
- ✓ Supports USB, I2C, and LV-TT-UART communications
- ✓ Small size

	MCR IQ™ 600 assembly	MCR IQ™ 500 assembly	MCR IQ™ 400 board only
Supported lenses	TL1250P, TL936P, TL410P, ML410P		
Supported lens versions	-R4, -N4, -R6, -N6	-R3, -N3, -R5, -N5	-R4, -N4, -R6, -N6
Iris Support	P-iris only		
Board size (without cables)	65mm x 46mm x 10mm	86mm x 46mm x 14mm	60mm x 25mm x 6mm
Weight	15g		10g
Mounting holes	2x M4 with plastic housing		4x M2
Operating voltage	5V (via USB or pin)		
Operating current (single motor movement)	Approx. 250mA		
Max operating current	Up to 800mA		
Storage Temperature	-40°C to 100°C		
Operating Temperature	-40°C to 85°C		
Ambient humidity	85% or less (non-condensing)		



MCR IQ™ 600 assembly

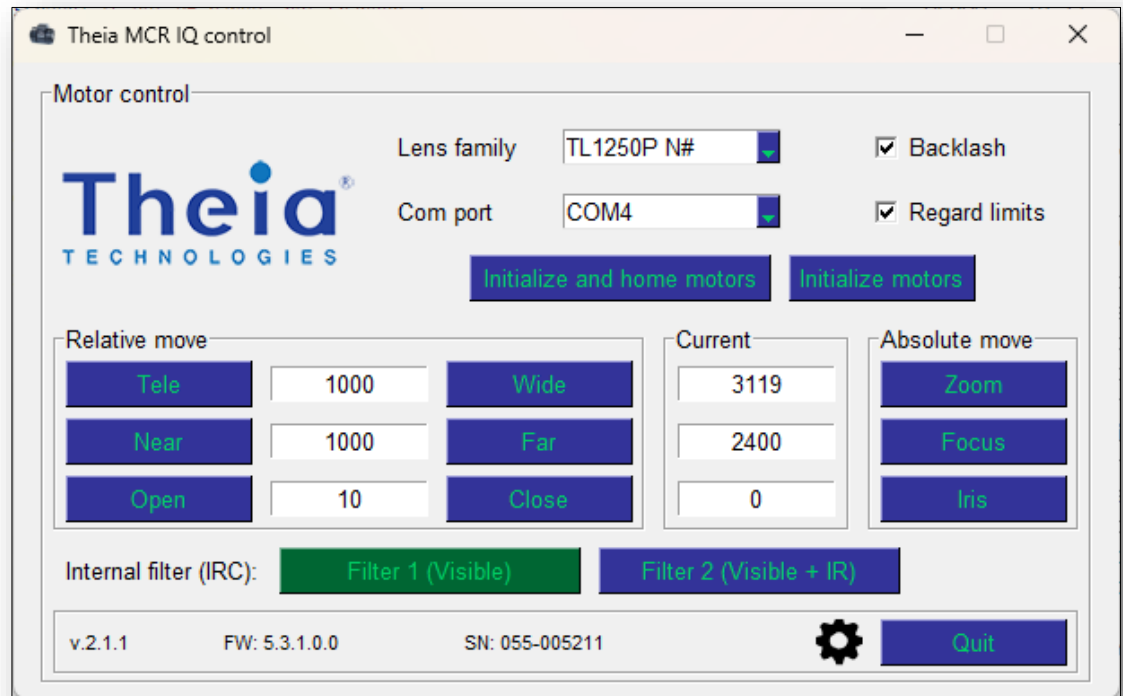


MCR IQ™ 500 assembly



MCR IQ™ 400 board only

For ease of use, Theia has created the MCR IQ™ application with graphical user interface (GUI) and Python module to easily send and receive commands from the board. The user doesn't have to worry about formatting the commands for the board. The purchase of the board now includes access to this application through a royalty free license and by using the application software (GUI and/or Python code), the user agrees to the terms of Theia's (standard BSD) license found at [theiatech.com/theia\\_BSD](http://theiatech.com/theia_BSD)



[Theia MCR IQ webpage](#)



[Theia MCR IQ Operator's Manual](#)