



06

think:water
Profine®

Coffee

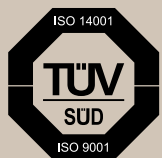
It might seem absurd or exaggerated, but water, with its characteristics, preponderantly influences the result of the espresso, being that it comprises about 90% of its composition.

Water for coffee

It might seem absurd or exaggerated, but water, with its characteristics, preponderantly influences the result of the espresso, being that it comprises about 90% of its composition, not to mention in filter coffee, where it makes up 98% of it.



tw produces according to MOCA compliance food



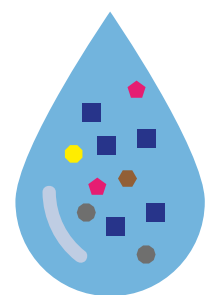
tw produces with quality ISO 9001:2015 and environmental ISO 14001:2015 management system certified by TÜV SÜD



Not all water is the same



The use of unfiltered water not only affects the coffee you are preparing, but over time, it could potentially damage the precious coffee machine. Water with high carbonate hardness can cause the formation of limescale, while the high permanent hardness can generate chalk deposits.

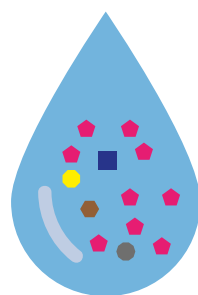


Untreated water

Untreated water contains high levels of sediments and could damage or obstruct the machine.



- ZERO PROFESSIONAL



Hard water

Hard water contains high levels of calcium and magnesium.



- OCRA
- ZERO PROFESSIONAL
- ADDOLCITORE COMPACT



Soft water

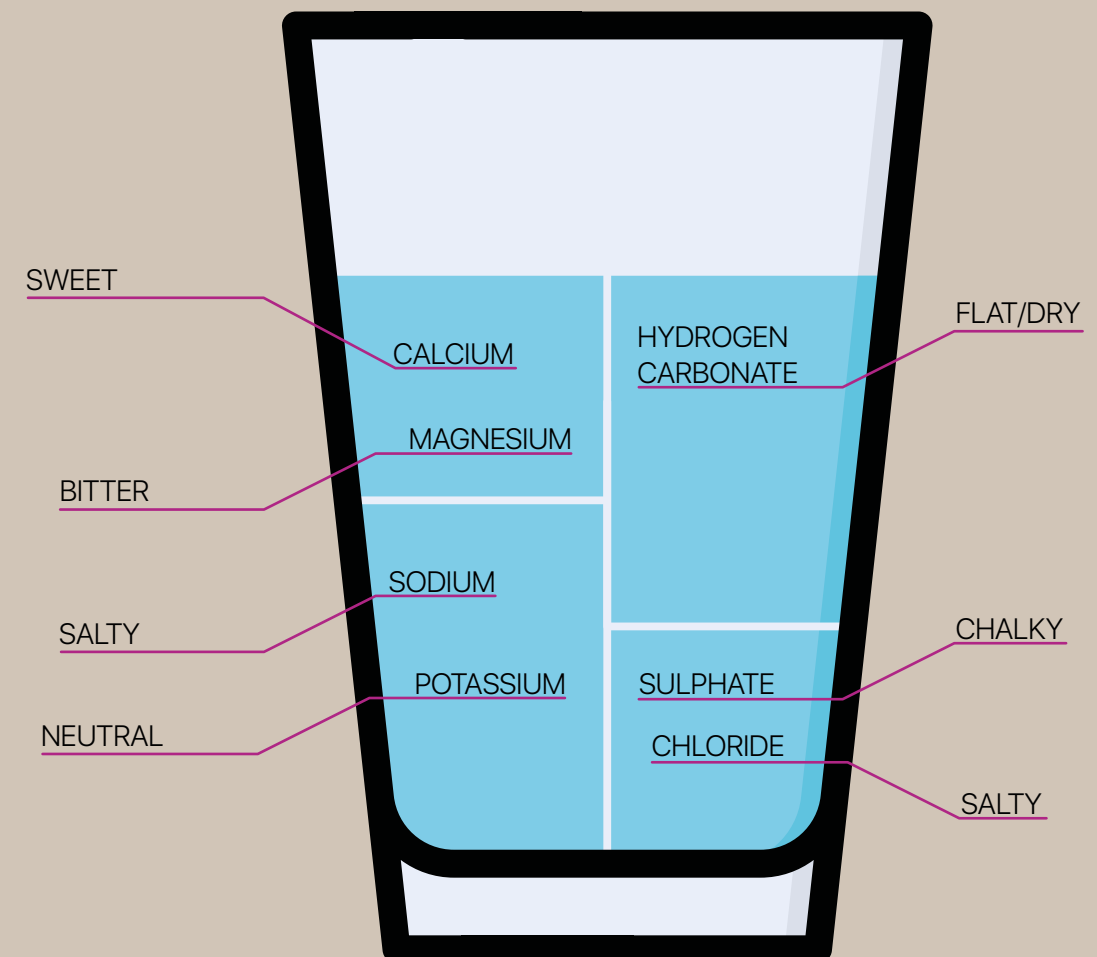
Soft water contains only small amounts of calcium, magnesium and carbonates.



- VIOLET
- LILAC
- ZERO PROFESSIONAL

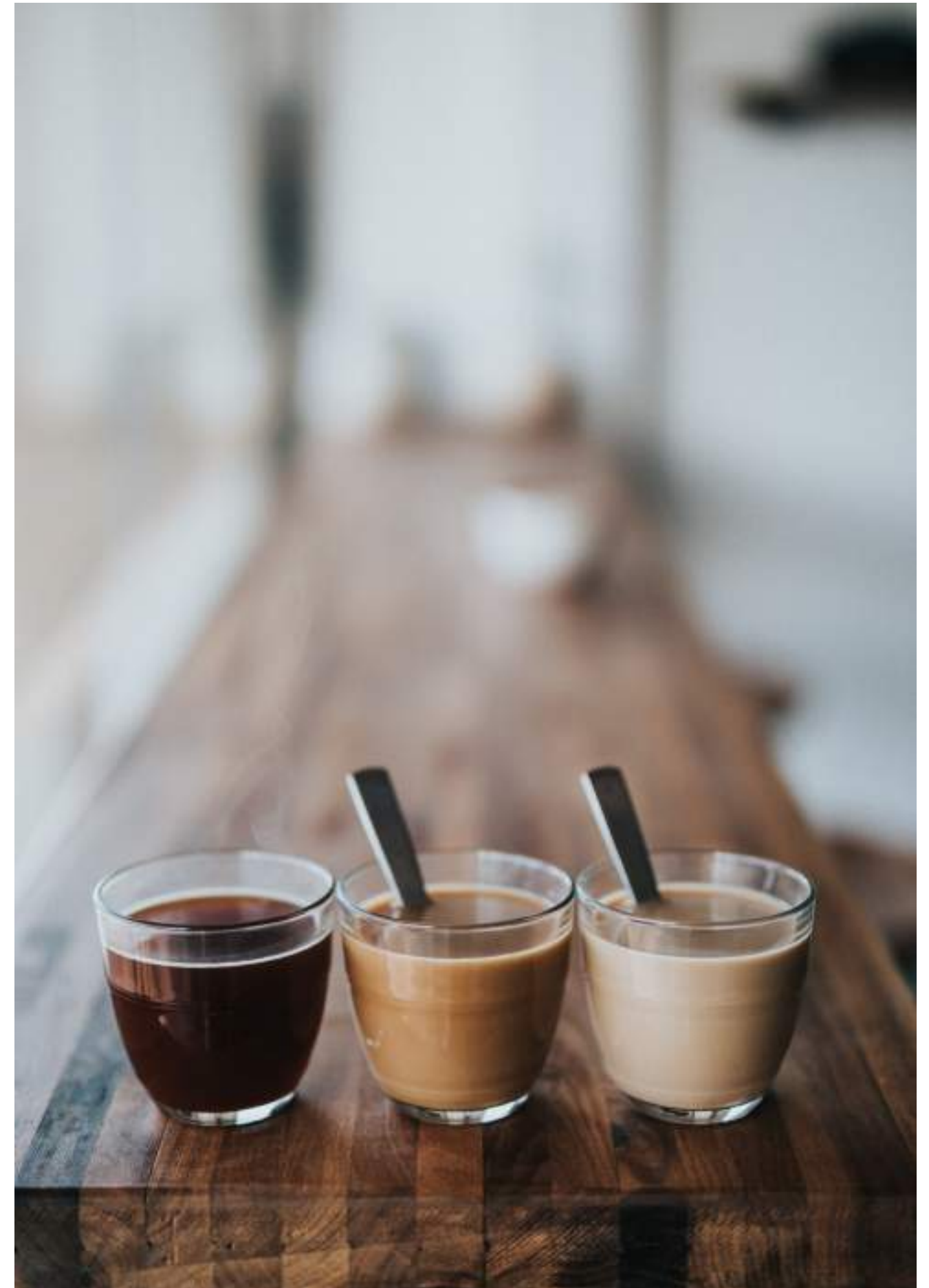
Improve the taste

Every element dissolved in the water transfers its own particular characteristic, soft, bitter, salty, and so forth. Finding the right blend of these substances creates the perfect recipe for obtaining the best possible product, enhancing the aromas and giving your drinks an attractive appearance. After all, water is the main ingredient of any drink.

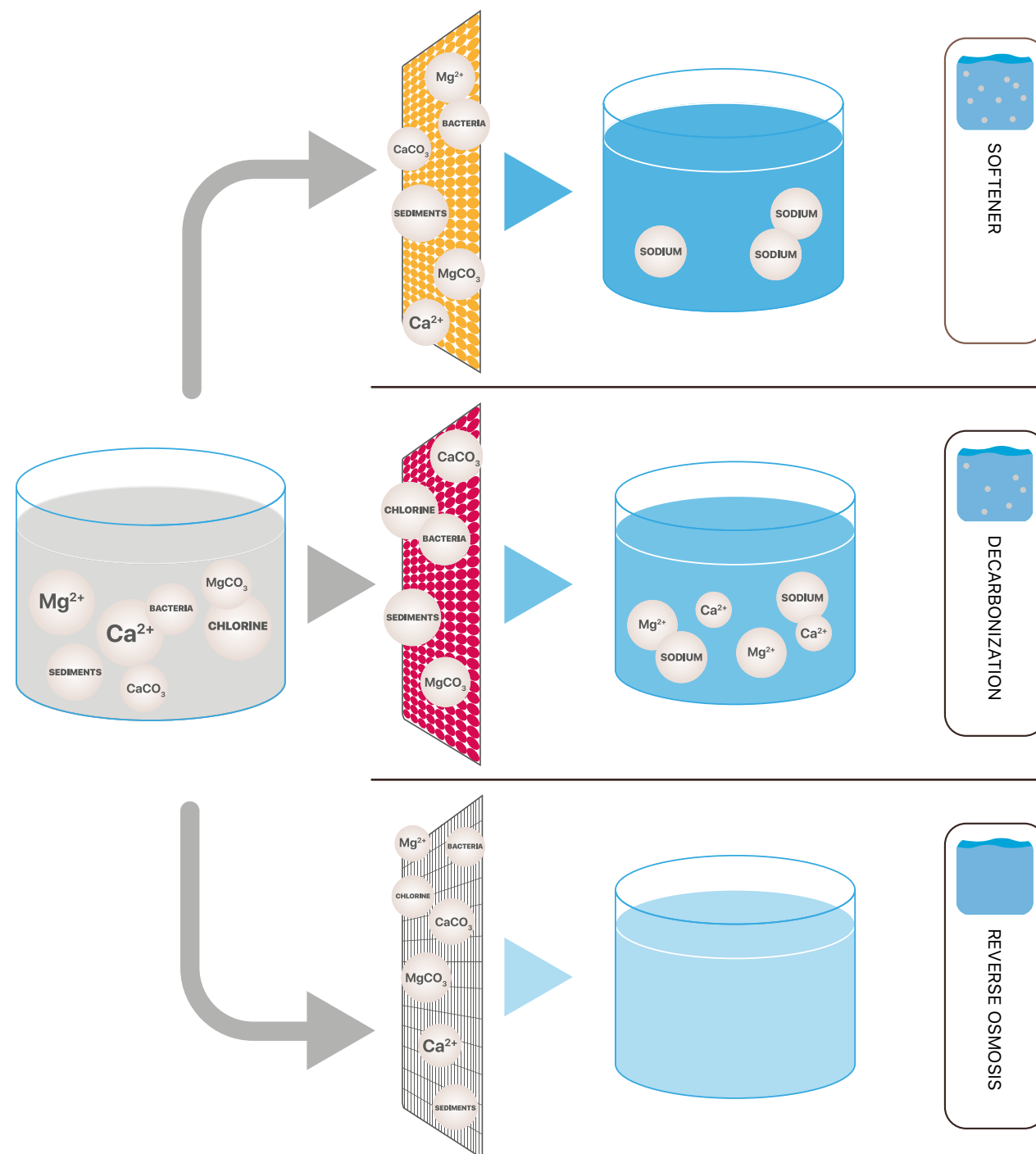


Treatment is worth it

Mineral deposits, due to the hardness of the water, are the cause of malfunction of the machines. Maintenance times increase and so do management costs, in the long run, the damage caused becomes absolutely relevant. Untreated water also leaves residue on glasses and cutlery, giving an opaque look, and the impression that they are dirty. And who would want to drink a bad coffee from a dirty cup?



Water treatment methods



Water treatment occurs mainly in three ways.

Water softener

The result one obtains through the use of the water softener is the elimination of the calcium Ca^{2+} and magnesium Mg^{2+} ions, which are responsible for the hardness of the water. In this way, one effectively prevents the formation of build-up of limescale that over time reduces the performance of the machines and causes their breakdown.

Decarbonization

The decarbonisation filters remove the carbonates of calcium $CaCO_3$ and magnesium $MgCO_3$. The use of these filters allows you to obtain a triple result, protection of the machines, drinks with tastes that are richer and fuller, and sparkling clean glasses, dishes and cutlery.

Reverse osmosis

Thanks to the very high degree of filtration that characterises reverse osmosis machines, it is possible to obtain water with very high quality characteristics. Passing through one or more membranes causes the water to be purified not only of the elements that determine its hardness, but also of all the contaminating substances, responsible, for example, of unwanted odours and flavours.



01

Coffee has a rich flavour and creamy foam. It preserves intact all the nuances that distinguish the various blends, enhancing the sensory experience. Giving people one more reason to come back for more...

03

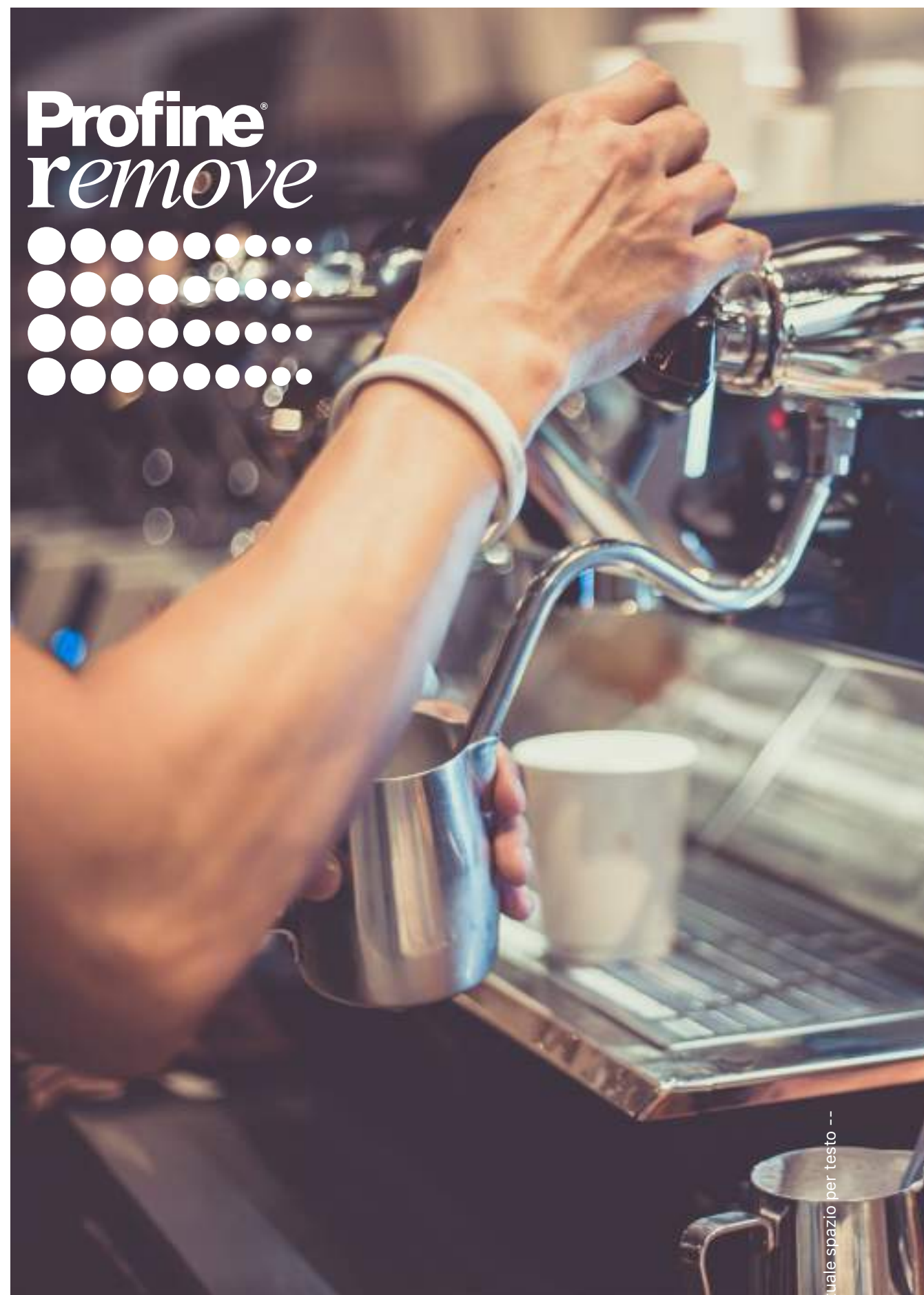
Incorrectly treated water almost always causes occlusions in pipes. The flow rate is reduced, annoying leaks can occur, the components are subjected to greater stress, and so are you.

02

Build-up adversely affects the energy consumption of the machines. The layer of limescale that forms around the resistors absorbs up to 30% of the heat produced, so the machine takes a longer time and requires more energy to reach and keep the optimum temperature. All of this translates into greater expenses.

04

If you do not intervene effectively, the accumulations of limescale end up irreparably damaging the machines, greatly increasing the operating costs and shortening their operating life. Good water extends its life.



Obtain the maximum from your Profine® filters.

With the Profine® Remove App you can monitor and adjust every aspect related to the management of the Profine® Remove filters. You will learn how to adjust the bypass, if any, calculate autonomies, know the yield in cups or kg of coffee. Download it for free, the App is compatible with Android and iOS.



Products

Water is the main ingredient, that magical liquid that transforms ground coffee into espresso.
Have you ever tried using water that was too soft, as if it were distilled?
We'd get an evanescent cream. And water that is too hard?
Too bitter, and with unpleasant tastes! A water with the right ratio of calcium, magnesium and carbonates, manages to take the aromas we want from the coffee, bringing them to the cup, so that we can have the perfect espresso.

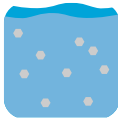


- ⌋ **OCRA** ____ p.16
- ⌋ **VIOLET** ____ p.18
- ⌋ **LILAC** ____ p.20
- ⌋ **BLUE** ____ p.22
- ⌋ **PFAS** ____ p.24
- ⌋ **ARSENIC** ____ p.26
- ⌋ **NITRATES** ____ p.28
- ⌋ **ZERO PROFESSIONAL** ____ p.30
- ⌋ **SALT:DETECTOR** ____ p.32
- ⌋ **COMPACT PREMIUM** ____ p.34



Profine® Ocra

Total water hardness reduction.



decarbonize water

Profine® Ocra is the total water softener thanks to a specific resin. Widely appreciated for hotel and hospital-ity systems, as well as those for catering and coffee. It resolves build-up of at the root, preventing limescale deposits. Profine® Ocra provides protection and defends the systems. Equipped with Profine® Carbon Block, it also eliminates unwanted odours and flavours, reduces chlorine and has a bacteriostatic action.

- Eliminates unwanted odours and flavours
- Reduces chlorine
- Guarantees bacteriostatic action
- Reduces overall hardness
- Protects the systems and machines
- Is effective against limescale

| CODE | DESCRIPTION | FLOW RATE | CAPACITY* |
|--------------|-----------------------|-----------|-------------------------------------|
| Y21415B-AYN | Ocra Small Profine® | 1 L/min | Download the App Profine® Remove |
| Y21414B-AYK | Ocra Medium Profine® | 1,5 L/min | |
| Y21413B-AYG | Ocra Large Profine® | 2 L/min | |
| PBBC0201-B3D | BIG 2.0 Ocra Profine® | 3 L/min | |
| PBBC0301-B3F | BIG 3.0 Ocra Profine® | 4,5 L/min | |
| PBBC0451-B3H | BIG 4.5 Ocra Profine® | 6,5 L/min | |
| PBBC0601-BBA | BIG 6.0 Ocra Profine® | 9 L/min | |

* The capacities may vary according to the French degrees (° f) from the organoleptic properties and the flow rate of the incoming water.

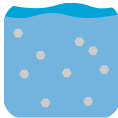
| | |
|--------------------|-------------------------------------|
| Operating pressure | Min. 2 - Max. 6 bar (0.2 - 0.6 Mpa) |
| Temperature | Min. 4 - Max. 30°C (40 - 86 °F) |





Profine® Violet

Reduction of carbonates with pH control and microfiltration.



decarbonize water

Profine® Violet is part of the filtering line dedicated to the removal of temporary hardness. Widely appreciated for hotel and hospitality systems, as well as those for catering and coffee. It resolves build-up at the root, preventing limescale deposits as well as lowering the pH. Profine® Violet provides protection and defends the systems. Equipped with Profine® Carbon Block, it also eliminates unwanted odours and flavours, reduces chlorine and has a bacteriostatic action.

- Eliminates unwanted odours and flavours
- Reduces chlorine
- Guarantees bacteriostatic action
- Contains the lowering of the pH
- Reduces temporary hardness
- Protects the systems and machines
- Is effective against limescale

| CODE | DESCRIPTION | FLOW RATE | CAPACITY* |
|--------------|-------------------------|-----------|-------------------------------------|
| Y21421B-AYW | Violet Small Profine® | 1 L/min | Download the App Profine® Remove |
| Y21420B-AYV | Violet Medium Profine® | 1,5 L/min | |
| Y21419B-AYU | Violet Large Profine® | 2 L/min | |
| PBBVP200-B3R | BIG 2.0 Violet Profine® | 2 L/min | |
| PBBVP300-B3S | BIG 3.0 Violet Profine® | 2,5 L/min | |
| PBBVP450-B3U | BIG 4.5 Violet Profine® | 3,5 L/min | |
| PBBVP600-B3V | BIG 6.0 Violet Profine® | 4,5 L/min | |

* The capacities may vary according to the French degrees (° f) from the organoleptic properties and the flow rate of the incoming water.

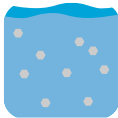
| | |
|--------------------|-------------------------------------|
| Operating pressure | Min. 2 - Max. 6 bar (0.2 - 0.6 Mpa) |
| Temperature | Min. 4 - Max. 30°C (40 - 86 °F) |





Profine® Lilac

Reduction of carbonates and microfiltration.



decarbonize water

Profine® Lilac is the filtering line dedicated to the removal of temporary hardness. Widely appreciated for hotel and hospitality systems, as well as those for catering and coffee. It resolves build-up at the root, preventing limescale deposits. Profine® Lilac provides protection and defends the systems. Equipped with Profine® Carbon Block, it eliminates unwanted odours and flavours, reduces chlorine and has a bacteriostatic action.

- Eliminates unwanted odours and flavours
- Reduces chlorine
- Guarantees bacteriostatic action
- Reduces temporary hardness
- Protects the systems and machines
- Is effective against limescale

| CODE | DESCRIPTION | FLOW RATE | CAPACITY* |
|--------------|------------------------|-----------|-------------------------------------|
| Y21477B-B1D | Lilac Small Profine® | 1 L/min | Download the App Profine® Remove |
| Y21478B-B1E | Lilac Medium Profine® | 1,5 L/min | |
| Y21479B-B8P | Lilac Large Profine® | 2 L/min | |
| PBBLP201-B3M | BIG 2.0 Lilac Profine® | 2,5 L/min | |
| PBBLP301-B3N | BIG 3.0 Lilac Profine® | 3 L/min | |
| PBBLP451-B3P | BIG 4.5 Lilac Profine® | 4 L/min | |
| PBBLP601-B3Q | BIG 6.0 Lilac Profine® | 5 L/min | |

* The capacities may vary according to the French degrees (° f) from the organoleptic properties and the flow rate of the incoming water.

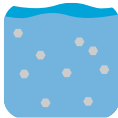
| | |
|--------------------|-------------------------------------|
| Operating pressure | Min. 2 - Max. 6 bar (0.2 - 0.6 Mpa) |
| Temperature | Min. 4 - Max. 30°C (40 - 86 °F) |





Profine® Blue

Dechlorination and clarification drinking water.



microfiltered
water

Profine® Blue, thanks to the Profine® Carbon Block technology, reduces and removes cloudiness present in the water, as well as chlorine and any tastes and smells. Nominal filtration degree 5 µm. Complies with DM 25/2012.

- Eliminates unwanted odours and flavours
- Reduces chlorine
- Reduces the cloudiness of the water
- Reduces the presence of any organic macromolecules

| CODE | DESCRIPTION | FLOW RATE | CAPACITY* |
|-------------|----------------------|-----------|-----------|
| Y21409B-AXW | Blue Small Profine® | 3 L/min | 15.000 L |
| Y21408B-AXT | Blue Medium Profine® | 5 L/min | 24.000 L |
| Y21407B-AXQ | Blue Large Profine® | 7 L/min | 45.000 L |

* The capacities may vary according to the French degrees (° f) from the organoleptic properties and the flow rate of the incoming water.

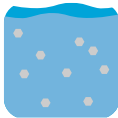
| | |
|--------------------|-------------------------------------|
| Operating pressure | Min. 2 - Max. 6 bar (0.2 - 0.6 Mpa) |
| Temperature | Min. 4 - Max. 30°C (40 - 86 °F) |





Profine® Pfas

Filtration kit which removes pfas.



microfiltered
water

Profine® PFAS removes unwanted odours and flavours, as well as Perfluoroalkylated substances (PFAS) Selective PFAS resin, final stage of 0.5 µm filtration with Profine® Carbon Block technology for bacterio-static action. To use with PFAS concentrations up to 500 ng/l.

- Eliminates unwanted odours and flavours and reduces chlorine
- Guarantees bacteriostatic action
- Reduces the concentration of PFAS

| CODE | DESCRIPTION | FLOW RATE* | CAPACITY* |
|--------------|--|------------|-----------|
| Y21488B-B1S | Kit Pfas Medium Profine® | 2 L/min | 11.000 L |
| Y21539B-B2M | Kit Pfas Medium Profine® with liter counter and without tap. | 2 L/min | 11.000 L |
| Y21486B-B1M | Pfas Medium Profine® ** | 2 L/min | - |
| Y21497B-B1X | Pfas Large Profine® | 2 L/min | 11.000 L |
| PBBPP200-B7Q | BIG 2.0 Pfas Profine® | 2 L/min | 11.000 L |

* To be used for waters with Pfas concentrations lower than 500 ng / l. The exchange capacities may vary according to the Pfas concentrations of the incoming water and the flow rates.

** Can only be used for the replacement filter kit 2 pieces.

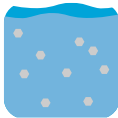
| | |
|--------------------|-------------------------------------|
| Operating pressure | Min. 2 - Max. 6 bar (0.2 - 0.6 Mpa) |
| Temperature | Min. 4 - Max. 30°C (40 - 86 °F) |





Profine® Arsenic

Filtration which reduces arsenic.



microfiltered
water

Profine® Arsenic reduces the concentration of arsenic. Selective arsenic resin and final stage of 0.5 µm filtration with Profine® Carbon Block technology for bacteriostatic action. To use with arsenic concentrations up to 50 µg/l.

- Eliminates unwanted odours and flavours and reduces chlorine
- Guarantees bacteriostatic action
- Reduces the concentration of arsenic

| CODE | DESCRIPTION | FLOW RATE* | CAPACITY* |
|--------------|----------------------------|------------|-----------|
| Y21518B-B27 | Kit Arsenic Small Profine® | 1 L/min | 10.000 L |
| Y21430B-AZ6 | Arsenic Small Profine® | 1 L/min | 10.000 L |
| Y21429B-AZ4 | Arsenic Medium Profine® | 1,5 L/min | 15.000 L |
| Y21428B-AZ3 | Arsenic Large Profine® | 2 L/min | 20.000 L |
| PBBRP200-B3W | BIG 2.0 Arsenic Profine® | 2 L/min | 22.000 L |
| PBBRP300-B3X | BIG 3.0 Arsenic Profine® | 2 L/min | 33.000 L |
| PBBRP450-B3Y | BIG 4.5 Arsenic Profine® | 2 L/min | 49.500 L |
| PBBRP600-B3Z | BIG 6.0 Arsenic Profine® | 2 L/min | 66.000 L |

* The capacities may vary according to the French degrees (° f) from the organoleptic properties and the flow rate of the incoming water.

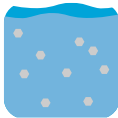
| | |
|--------------------|-------------------------------------|
| Operating pressure | Min. 2 - Max. 6 bar (0.2 - 0.6 Mpa) |
| Temperature | Min. 4 - Max. 30°C (40 - 86 °F) |





Profine® Nitrates

Filter for nitrates removal.



microfiltered
water

Profine® Nitrates reduces the concentration of nitrates. Selective nitrates resin and final stage of 0.5 µm filtration with Profine® Carbon Block technology for bacteriostatic action. To use with nitrates concentrations up to 50 mg/l.

- Eliminates unwanted odours and flavours and reduces chlorine
- Guarantees bacteriostatic action
- Reduces the concentration of nitrates

| CODE | DESCRIPTION | FLOW RATE* | CAPACITY* |
|-------------|-----------------------------|------------|-----------|
| Y21527B-B2C | Kit Nitrates Small Profine® | 1 L/min | 900 L |
| Y21443B-AZG | Nitrates Small Profine® | 1 L/min | 9000 L |
| Y21439B-AZE | Nitrates Medium Profine® | 1,5 L/min | 1.400 L |
| Y21438B-AZD | Nitrates Large Profine® | 2,2 L/min | 2.100 L |

* The capacities may vary according to the French degrees (° f) from the organoleptic properties and the flow rate of the incoming water.

| | |
|--------------------|-------------------------------------|
| Operating pressure | Min. 2 - Max. 6 bar (0.2 - 0.6 Mpa) |
| Temperature | Min. 4 - Max. 30°C (40 - 86 °F) |





Profine® Zero Professional

Ultra-natural and super-filtering.



osmotic
water

A hyperfiltration incredibly in harmony with nature. Because this new system of reverse osmosis has been devised while thinking about the natural forces that move water. Without the use of a pump and electricity, Zero Professional provides 3 litres of finely osmotised water per minute. Includes pre-treatment and post-treatment, mounting bracket and conductivity adjustment screw.

- High instantaneous flow rate
- Without requiring electrical energy
- Including active carbon and pre-treatment and post-treatment filters
- Integrated expansion tanks with patented functions
- Layout of the system that creates major savings in the water used
- Exclusive and compact design
- Integrated support bracket for horizontal and vertical mounting
- Conductivity adjustment screw

| CODE | DESCRIPTION |
|-----------------|----------------------------|
| OF80002000N-ALK | Profine® Zero Professional |

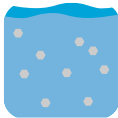
| | |
|---------------------|---------------------------------|
| Operating pressure | 1,5 bar/6 bar 21.7 PSI/87 PSI |
| Temperature | Min. 4 - Max. 30°C (40 - 86 °F) |
| Hourly flow rate | 24 l/h (4 bar) |
| Pre-Post filtration | Profine® Carbon Block 5 µm |





Salt:detector

Everything about your softener, all from your smartphone!



softened
water

Salt: detector monitors the operating status of the softener in real time and from a smartphone. With triple signage, visual, sound and via App; Salt: detector allows immediate monitoring of the operating status of the softener or the various softeners installed.

- Check the operating status of the softener in real time from your smartphone
- Complete management via the app available for iOS and Android smartphones
- It can be installed on any type of tank or cabinet
- It can also be installed on softeners already in operation
- Management of an unlimited number of devices with immediate display of the status with the possibility of filtering devices in alarm
- Personalization of the device name and assistance references displayed during alarms
- Sharing device management with multiple users
- Real-time salt level queries with reserve notification
- Push notifications and alarm display via the application
- Visualization and acoustic signaling of alarms directly on the device via led and buzzer
- Alarm logging
- Resetting device alarms via the application
- Secondary output relay for remote blocking alarms
- Device geolocation

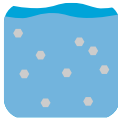
| CODE | DESCRIPTION |
|-------------|---------------|
| Y60700B-B4Y | Salt:detector |



salt:detector
included

Profine® Compact Premium

Big results in a small space.



softened
water

Compact and efficient, our softener guarantees brilliant results and reduced costs. Perfectly sized for small businesses, it is the ideal ally to always keep your equipment in order. Compact Premium is equipped with Salt: detector, a control device designed by Think: water capable of performing all the operating performance required for configuration, detection and signaling of salt shortage and malfunction return.

- Compact dimensions
- Large control display
- Volumetric
- Valve with integrated bypass
- Floating valve with safety device
- Salt level indicator min / max
- Key lock function

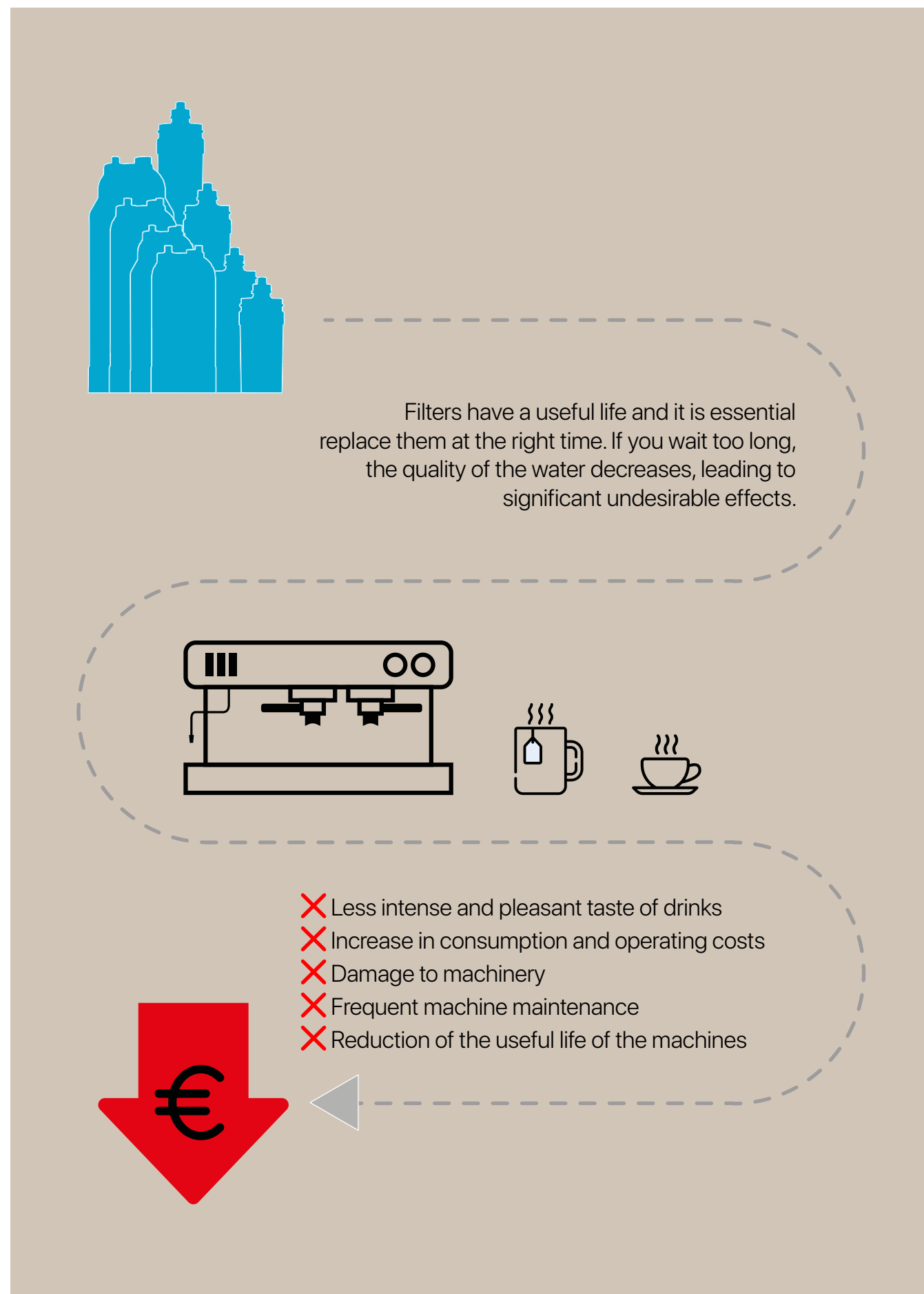


| CODE | DESCRIPTION |
|-----------------------|---------------------------------|
| 8500833 | New Softener Compact 5L Premium |
| Capacity | 30 m³/h |
| Connections | 3/4" |
| Flow rate | 0,25 mc/h |
| Strong cationic resin | 5 liters |
| Dimensions | 225 x 430 mm h 370 mm |



**A good water for a
good coffee.**

Simple.



Do you need support to choose the right solution?
Our team can help you get the best results by operating together with you the most appropriate choices for your business.

Credits
Graphics: **tw** MKT Department

Keep in touch

facebook.com/profineitalia
instagram.com/profine_italia
youtube.com/profine cartridge
linkedin.com/profine srl

#lifewithoutplastic



06

think:water
Profine®

Coffee

Via delle Pezze 35
35013 Cittadella (PD) Italy

tel: + 39 049 9403526
fax: +39 049 8598579

mail: info@thinkwater.com

thinkwater.com
profinefilter.com
shop.profinefilter.com