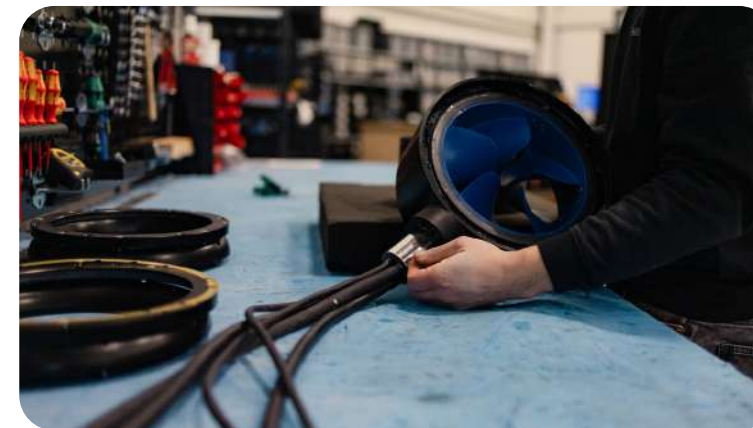




RIM DRIVE TECHNOLOGY

# HELLO, THIS IS RIMDRIVE





---

## Purpose

Our purpose is to help as many people and companies as possible with the transition to electric boating.

---

## Quality control

In order to guarantee and monitor the quality of our products, our production, R&D and office is located in the **Netherlands**.

---

## Sustainable impact

We are proud that our motors continue to be part of countless projects and applications around the world.

---

## Our team

Designers, engineers, strategists and many more. Rim Drive Technology has more than 25 employees and more than 20 partners around the world.

Scan & see our references





# HISTORY

**2016**

For the first time we were introduced to rim drive motors.

**2017**

We gained a lot of experience by working intensively with existing rim drive motors.

**2018**

We realized all advantages of rim drive motors and detected technology gaps in existing solution.

**2019**

Founding Rim Drive Technology, building next level Rim Drive motors and performed endurance test runs.

**2020**

Establishing worldwide technical partnerships.

**2021**

Expanding developments with Rim Drive applications and system solutions.

**2022**

Worldwide signed distribution agreements.

**2023**

Constant improvement of designs, processes and supply chain.

**2024**

Innovate new products and enhance market presence for 2024.



# A revolution in Propulsion

The combination of the inlet ring, outlet ring and propeller makes it the most efficient way of propulsion. Each part has been simulated via CFD analysis and intensively tested in real circumstances.



An **immediate** acceleration response in comparison with conventional solutions.

A **compact** and **lightweight** design makes our products compatible for the smallest installation.

Because of the **stepless** controlling our rim drive motors can be operated proportionally.

No center shaft **limits** the chance that ropes, or fishing nets will get stuck in the propeller.

Only one rotating part which **reduce** the amount of maintenance.

# Propulsion systems

## POD



Power range: 0.5kW - 75kW

The better alternative for an inboard motor

## Steerable PODs



1 Entry level - Steerable POD



2 Steerable POD

Power range: 2.5kW - 75kW

320 degrees propulsive power for ultimate maneuverability

# Propulsion systems

## Outboards



**1** Entry Level - Outboard Tiller  
Power range: 2.5kW - 15kW



**2** Entry Level - Outboard  
Power range: 2.5kW - 75kW



**3** Steerable Outboard  
Power range: 11kW - 15kW

---

Different outboard solutions for your application

# Thrusters

## Standard thruster



Power range: 0.5kW - 75kW

---

The best solution for continuous running times

## Thruster tunnel set

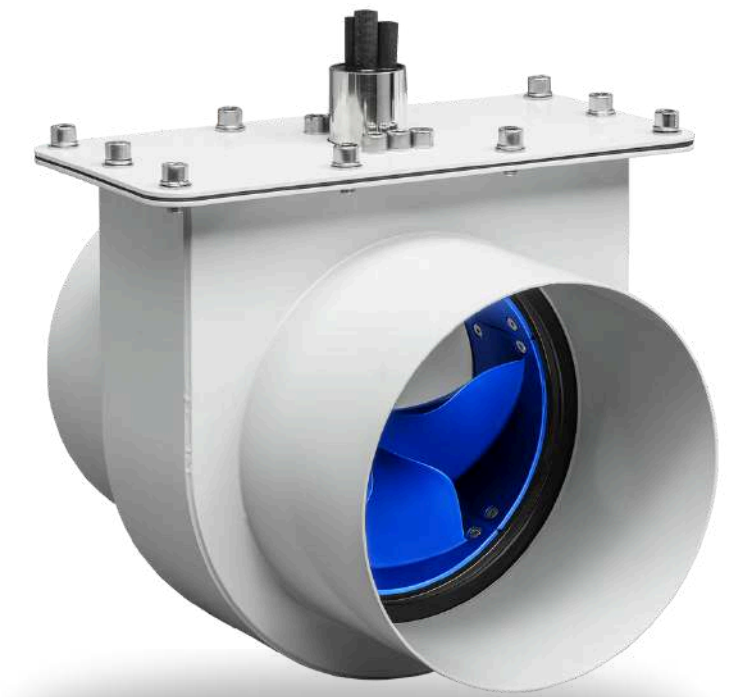


Power range: 2.5kW - 75kW

---

A strong stainless steel provides a robust solution for bow thrusters

## Bow thruster box



Power range: 2.5kW - 75kW

---

The bow thruster box makes it easy to access the motor

# Motor configurations



kW	POD	Entry Level Steerable POD	Steerable POD	Entry Level Outboard	Steerable Outboard	Bow thruster
0.5	✓					✓
2.5	✓	✓	✓	✓		✓
3.0	✓	✓	✓	✓		✓
4.2	✓	✓	✓	✓		✓
5.0	✓	✓	✓	✓		✓
8.0	✓	✓	✓	✓		✓
11.0	✓	✓	✓	✓	✓	✓
15.0	✓	✓	✓	✓	✓	✓
25.0	✓	✓	✓			✓
30.0	✓	✓	✓			✓
50.0	✓	✓	✓			✓
75.0	✓	✓	✓			✓



# Our batteries & accessories

We offer a wide range of accessories which increases the user friendliness of our motors. To provide the best customer experience, our accessories work efficiently with all our rim drive products.



## Batteries

The best solution for full day operation.

- Available in 12V, 24V, 48V and 96V
- Above 96V on request



## Chargers

Chargers to keep you connected and powered up

48V 2000W | 48V 3300W



## Displays

Provides the right information at the right time.

We offer two display versions: basic and advanced.



## Throttle controls

Our unique throttle control for ultimate compability.

Side mount / single top mount / double top mount



## Smart Solutions

Our Vessel Control Systems provide precise, reliable control for electric vessels.

Smart Steering System | GlennDining Joystick | Dynamic Positioning System



## Cables

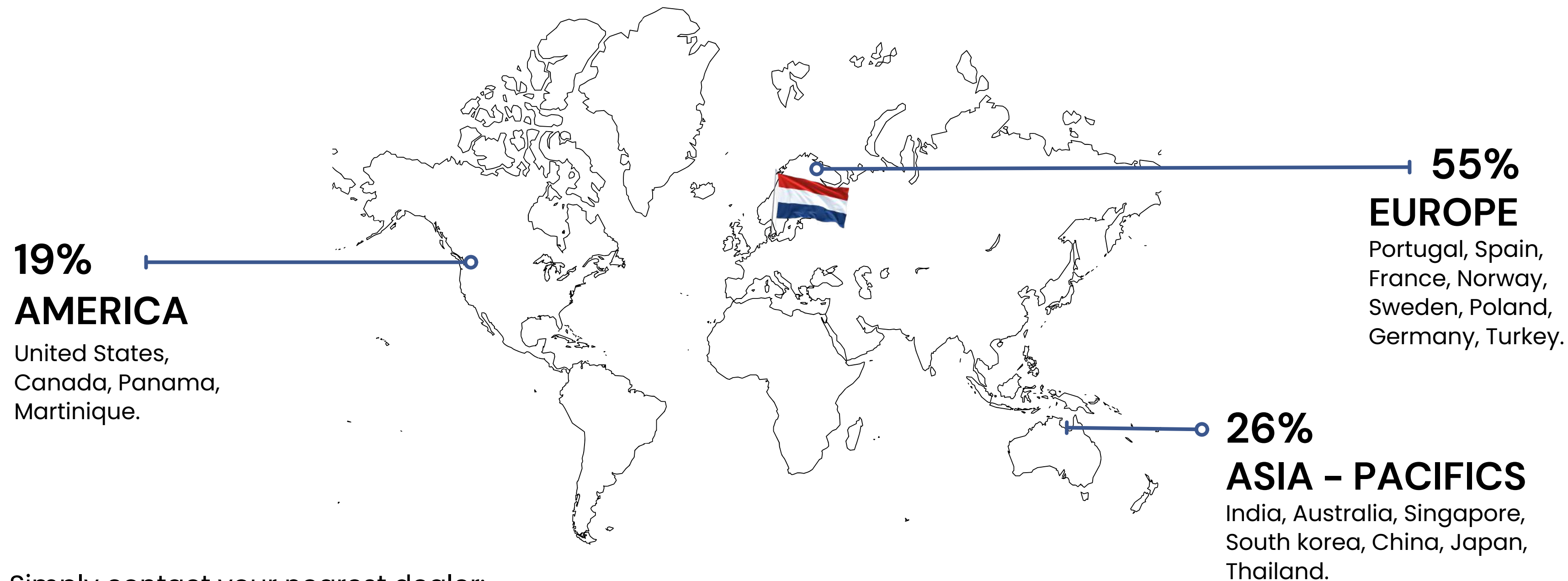
To support the system.

Safety kit cables / Main power cables POD / Steerable POD / Outboard / bow thruster



# Our market

We are operating in more and more markets in different countries.



Simply contact your nearest dealer:  
[› Find dealer](#)



# Marine applications

Our electric motors are used in various types of marine applications.

## Subsea

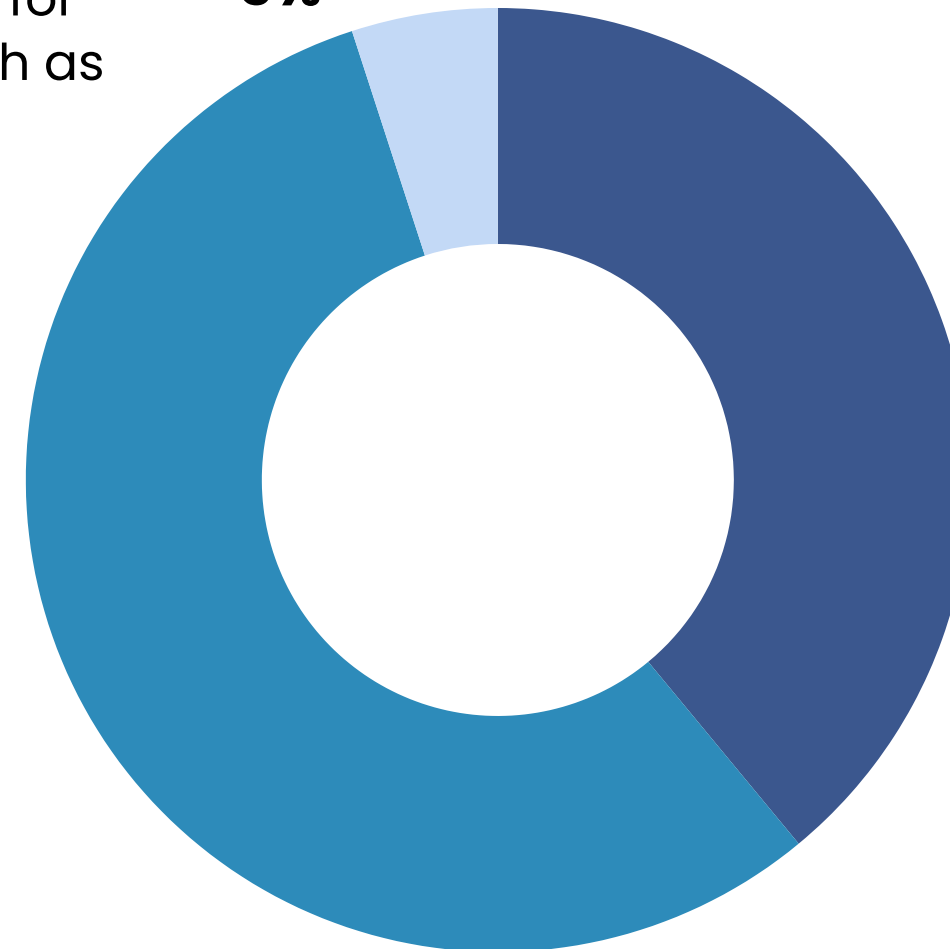
Our motors can be used for subsea applications such as submarines and ROVs.

5%

## Survey & industry

Our motors can be used for many (unmanned) research vessels manufacturers with surveying & positioning purposes.

56%



## Private

Our motors can be used as the main drive for pleasure crafts such as sloops, kayaks, dingys and sailboats.

39%



IN COLLABORATION WITH TREESFORALL

---

*To continue where other companies lag behind, we  
want to compensate other CO2 emissions.  
We decided to take the next step, compensating all  
CO2 emissions from our company.*

---



# Sharing knowledge and documents

We want to explain our customers the operation of our products. At our website you can find for each product the most relevant information.

Manual



To let you understand the way of installation and the important points of our products.

Technical drawings



To let you understand the extremely limited size of our products and to easily integrate it in your design.

Catalogue



To let you understand the characteristics of our products.

Reference portfolio



To provide you with evidence of the product's effectiveness and reliability, and to convince you of its value and benefits.



And tell our story to other...



[Rim Drive Technology](#)



[www.rimdrivetechnology.nl](http://www.rimdrivetechnology.nl)



+31 (0) 85 482 48 55



[Sales@rimdrivetechnology.nl](mailto:Sales@rimdrivetechnology.nl)